

FIG. 1

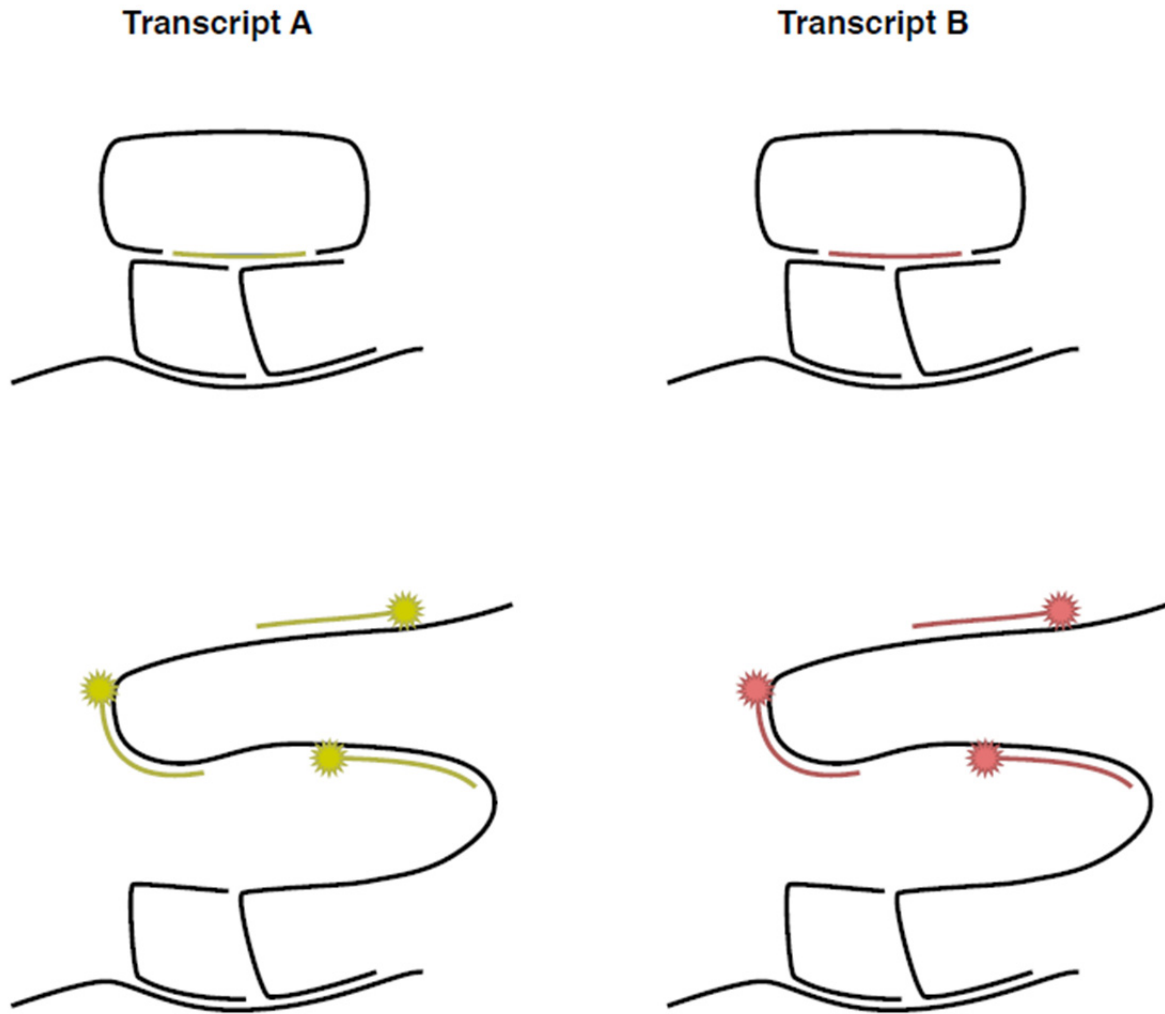


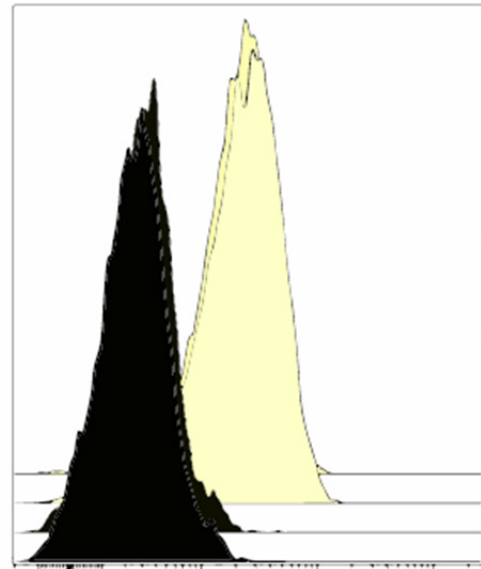
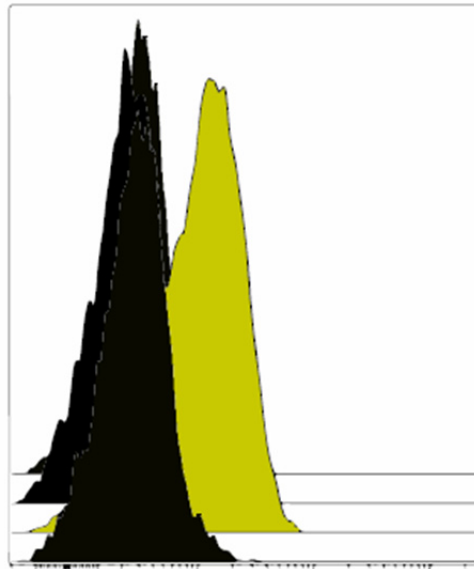
FIGURE 2

A)

Jurkat

Nalm-6

CD10
CD179a
CD3E
ACTB + GAPDH



B)

CD10 1 probe pair
CD10 2 probe pairs
CD10 3 probe pairs
CD10 4 probe pairs
CD10 5 probe pairs
CD10 6 probe pairs

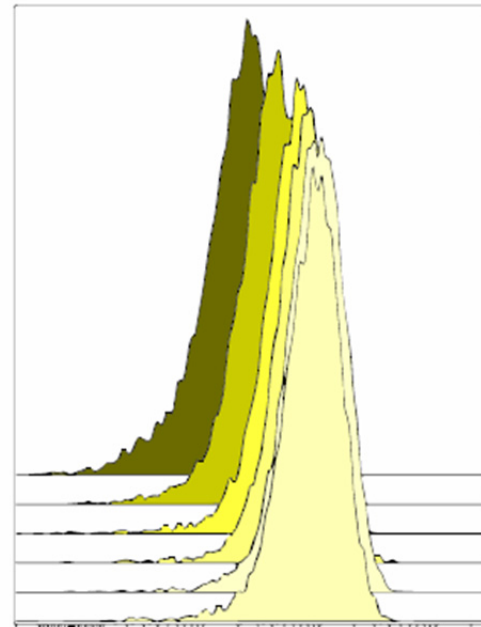
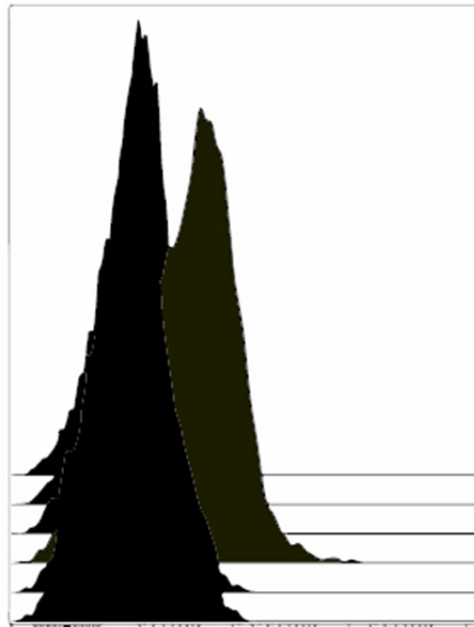


FIGURE 3

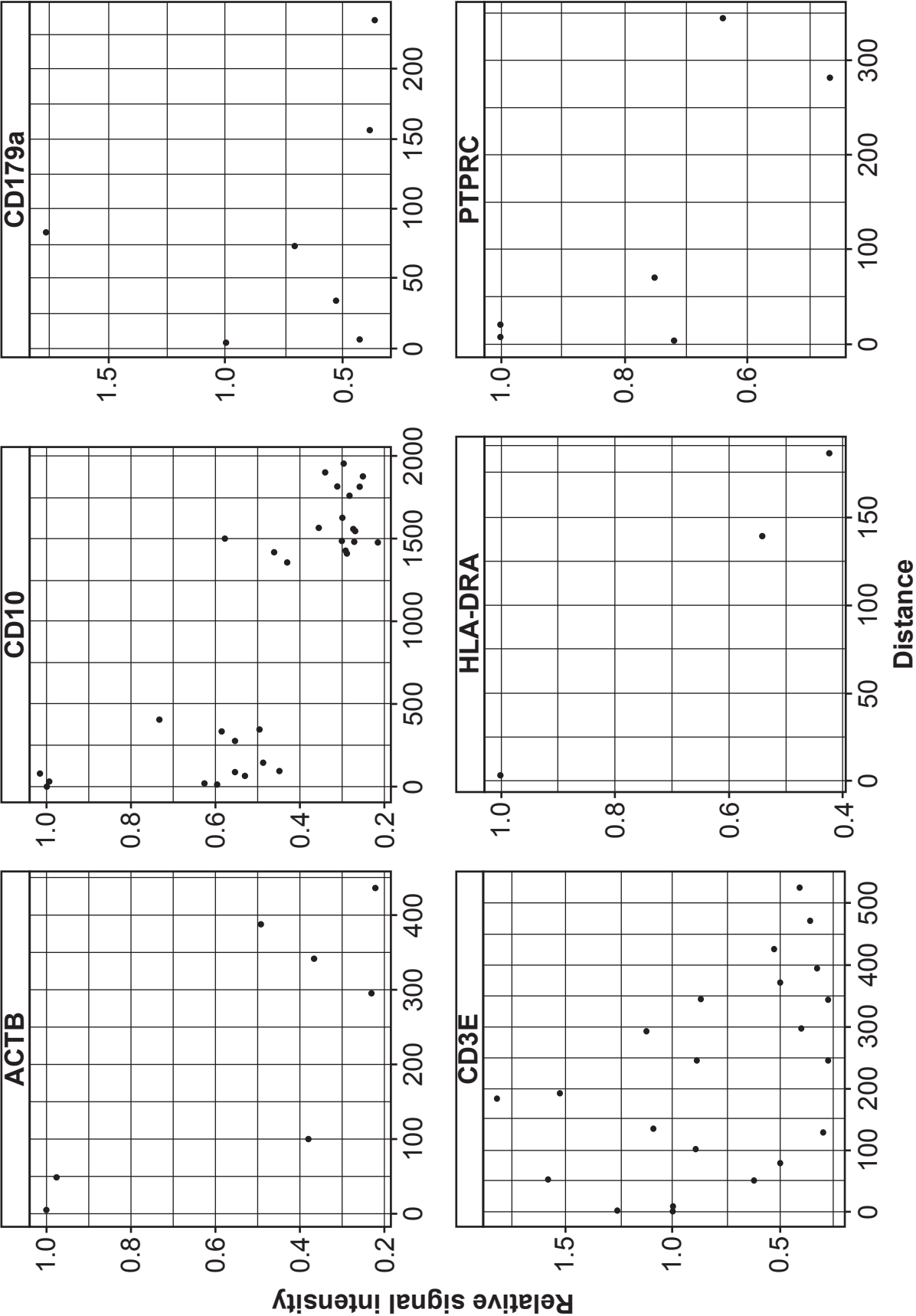


FIG. 4

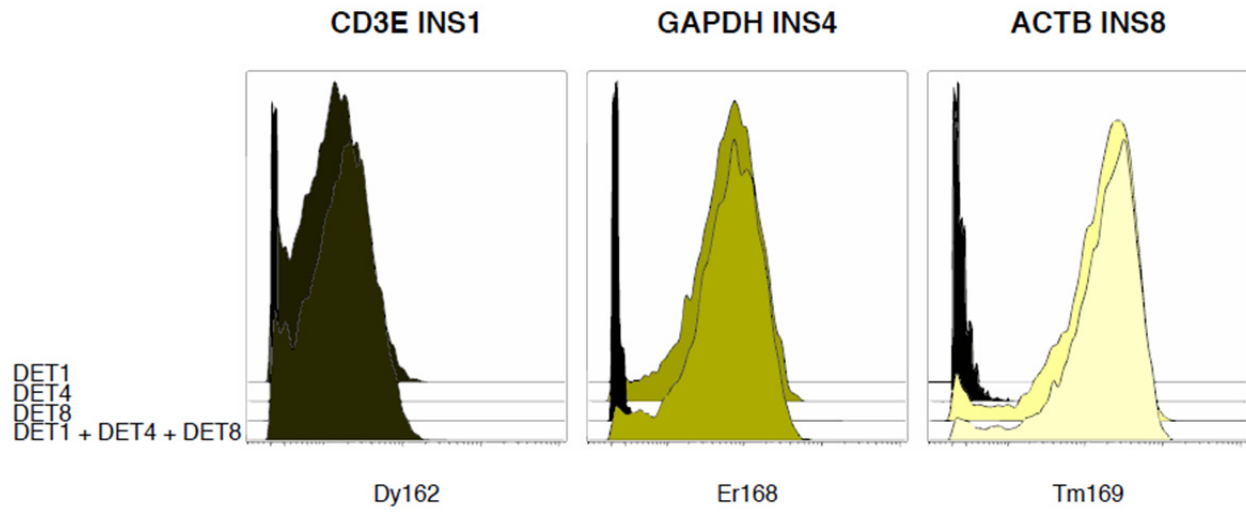
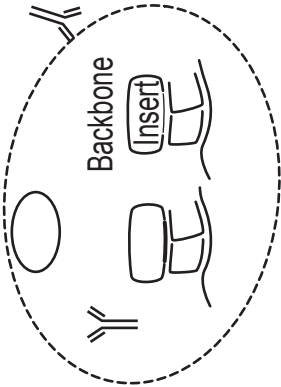
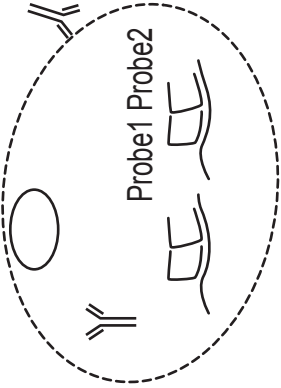
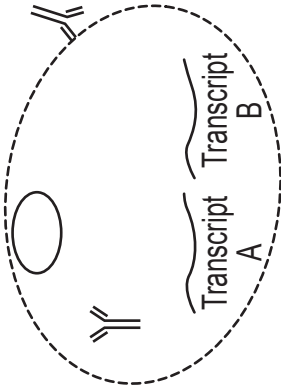


FIGURE 5

1. FIXATION, PERMEABILIZATION, ANTIBODY STAINING

2. PLAYR PROBE PAIR HYBRIDIZATION

3. BACKBONE / INSERT HYBRIDIZATION



4. BACKBONE / INSERT LIGATION

5. ROLLING CIRCLE AMPLIFICATION

6. DETECTION

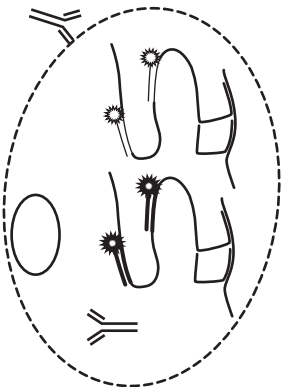
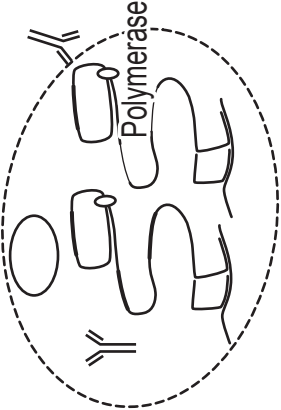
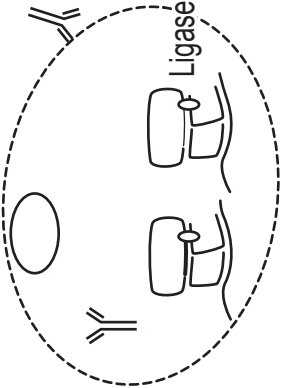


FIG. 6A

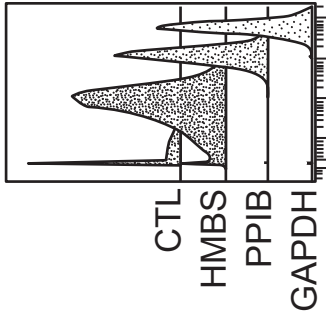


FIG. 6B

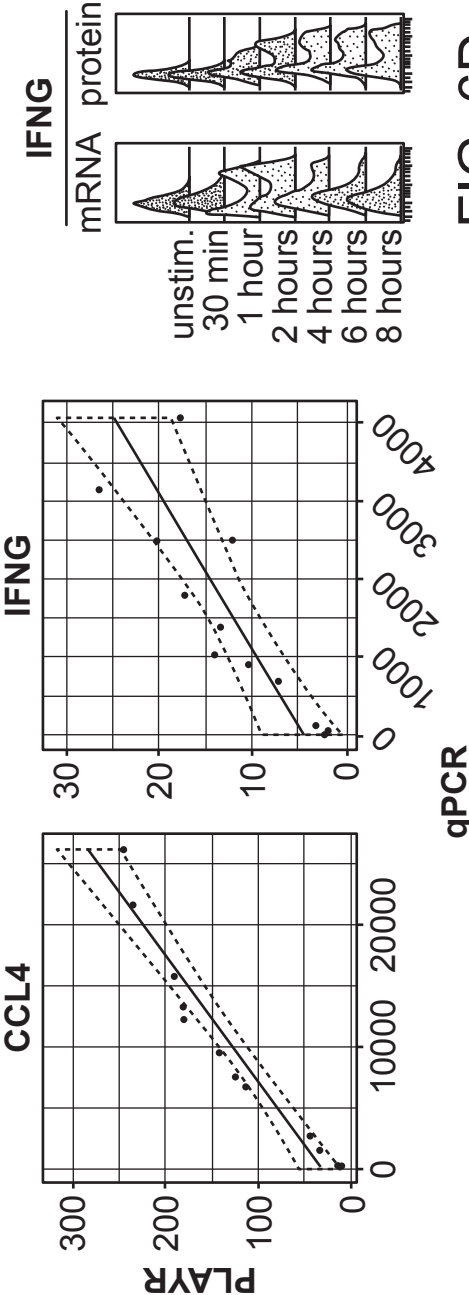
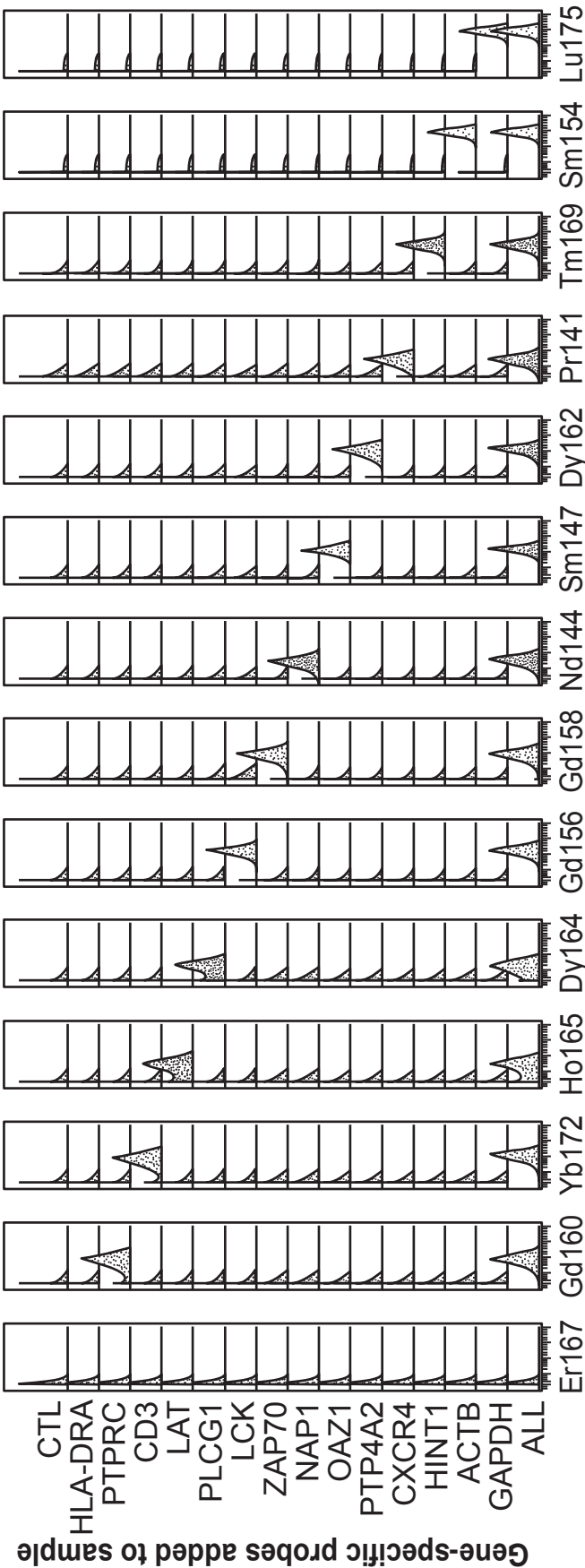


FIG. 6C

FIG. 6D



Mass cytometry acquisition channel

FIG. 7A

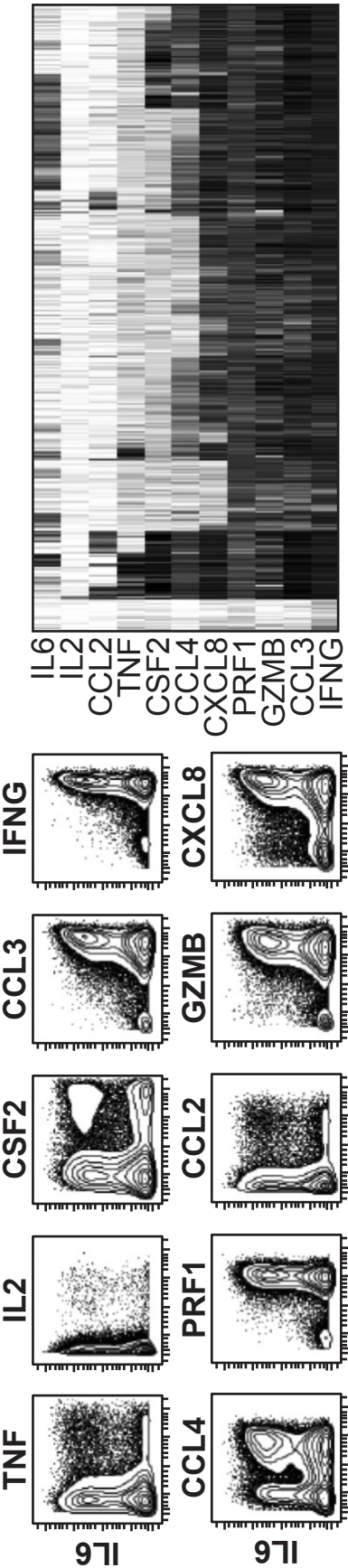


FIG. 7C

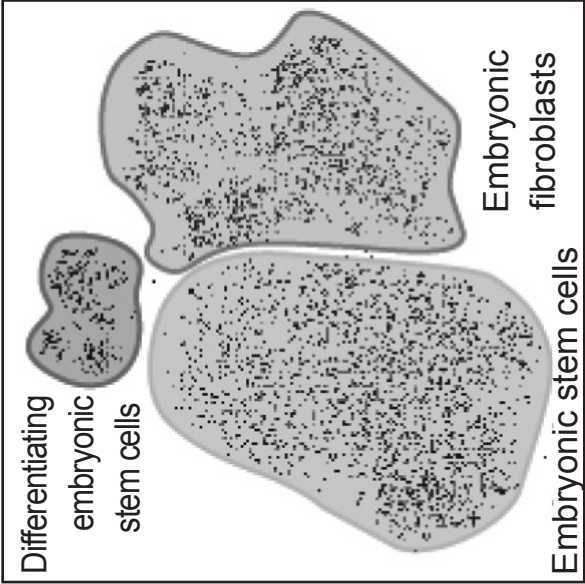


FIG. 8A

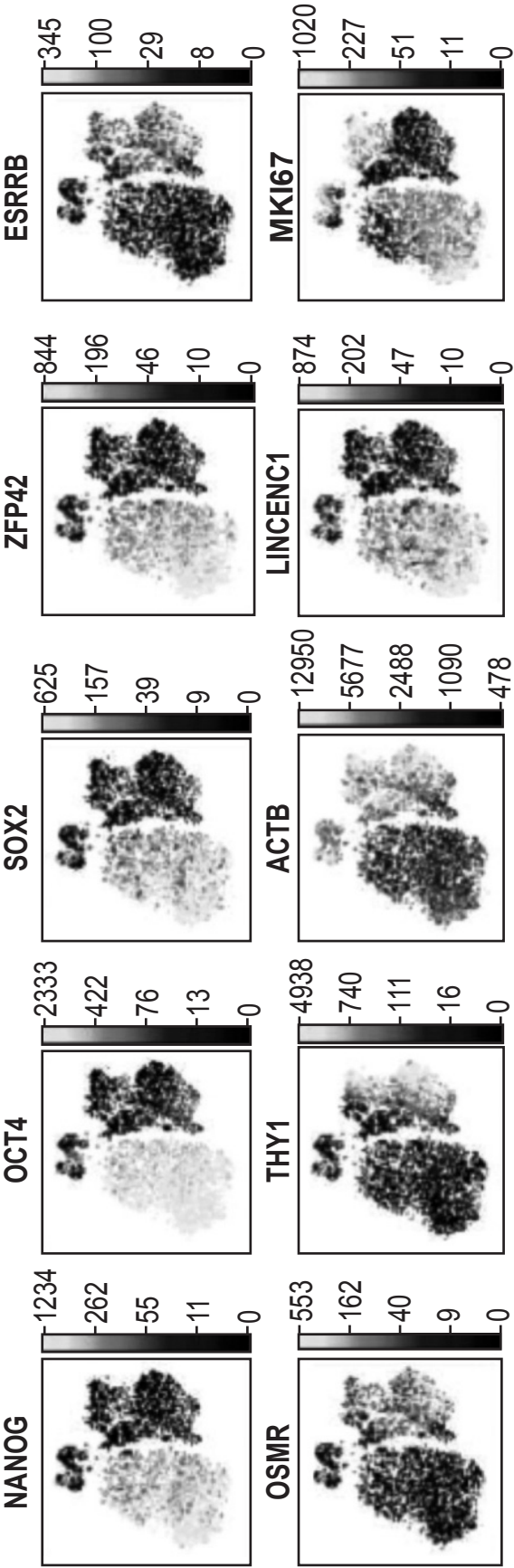


FIG. 8B

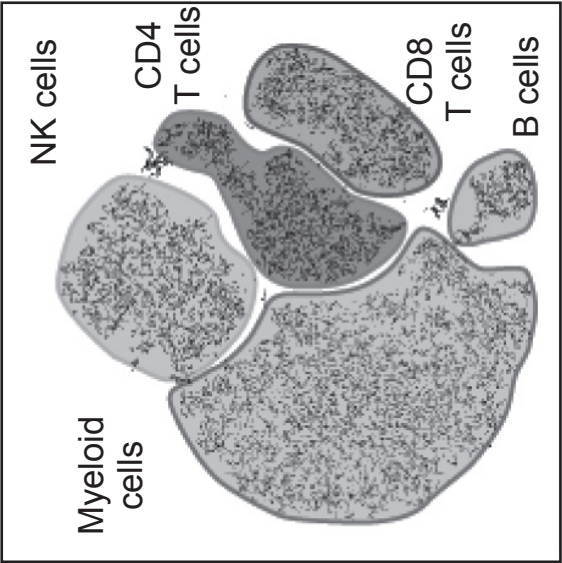


FIG. 8C

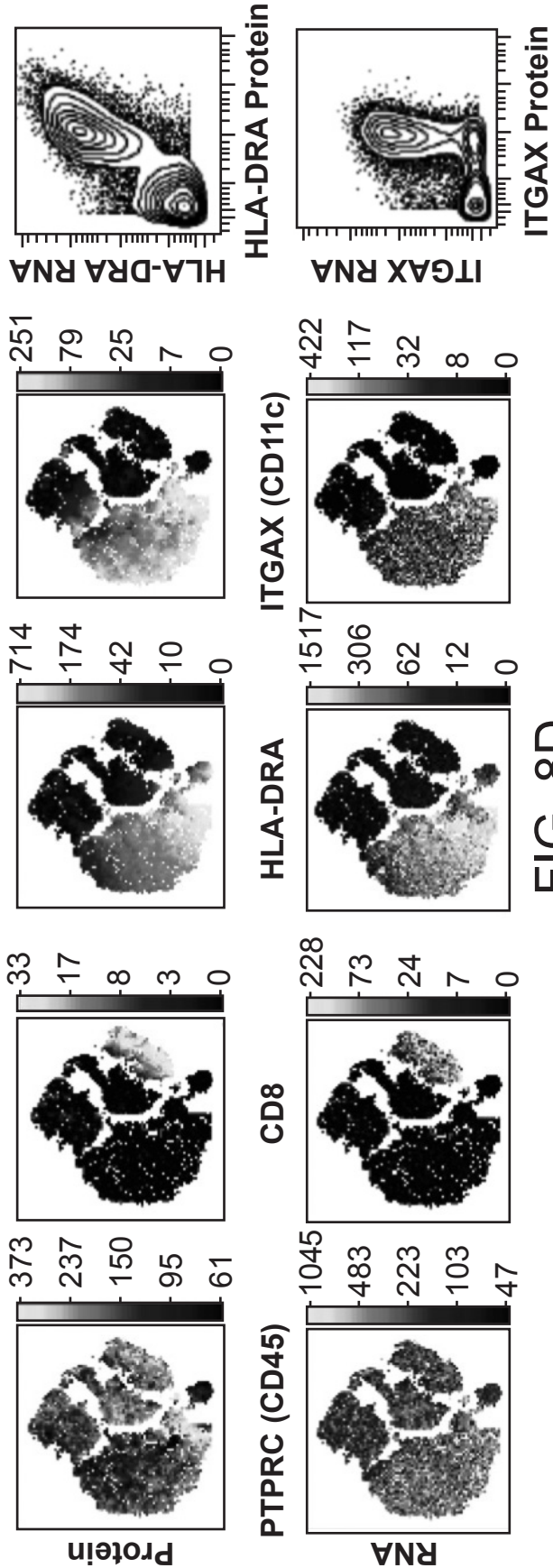


FIG. 8D

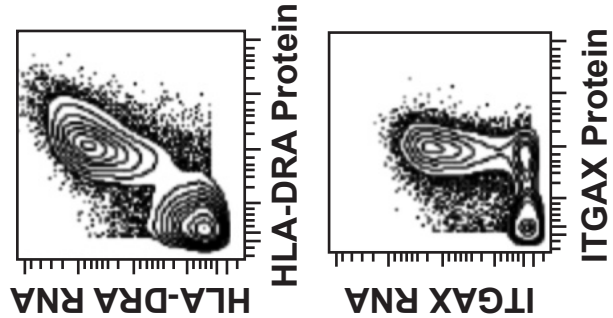


FIG. 8E

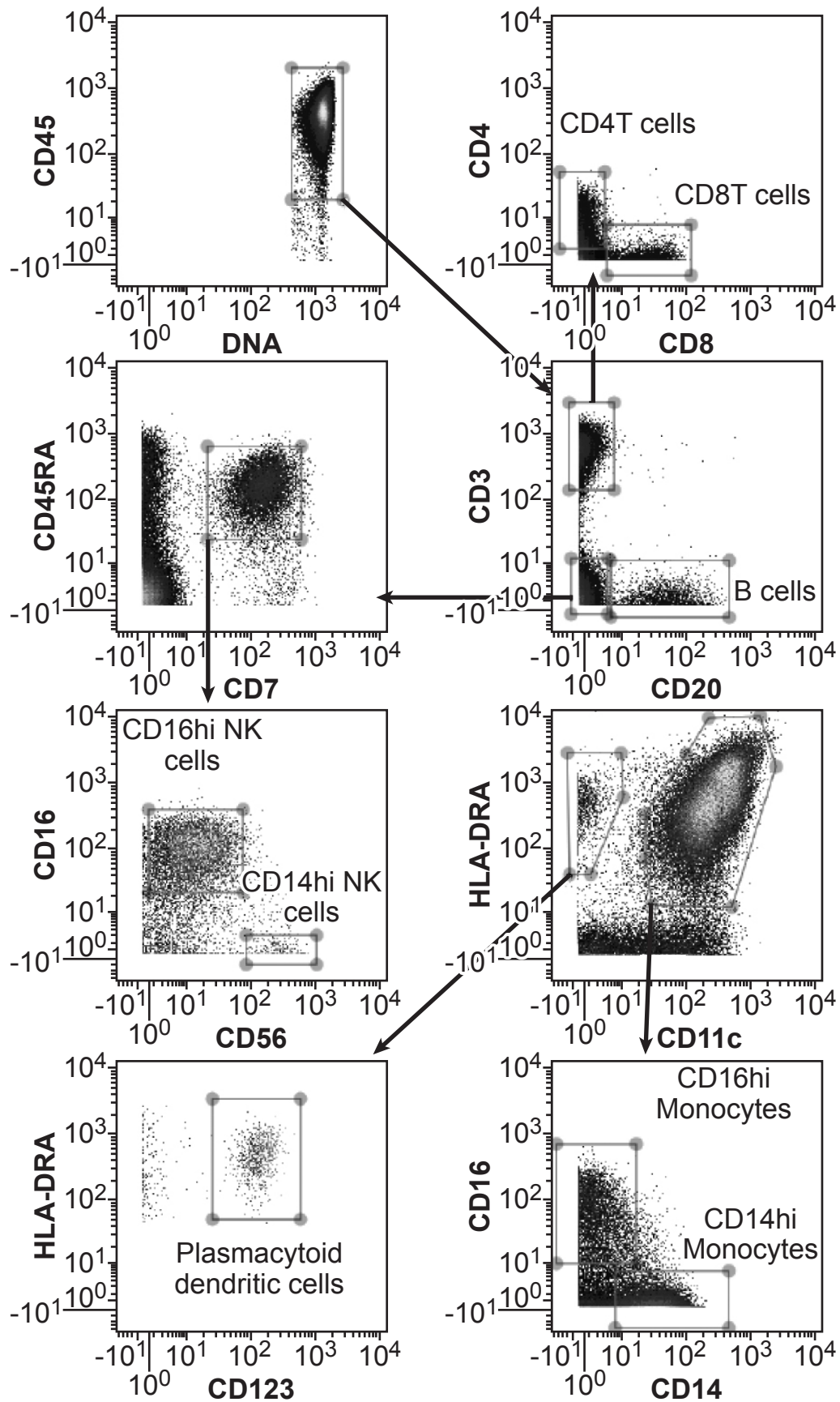
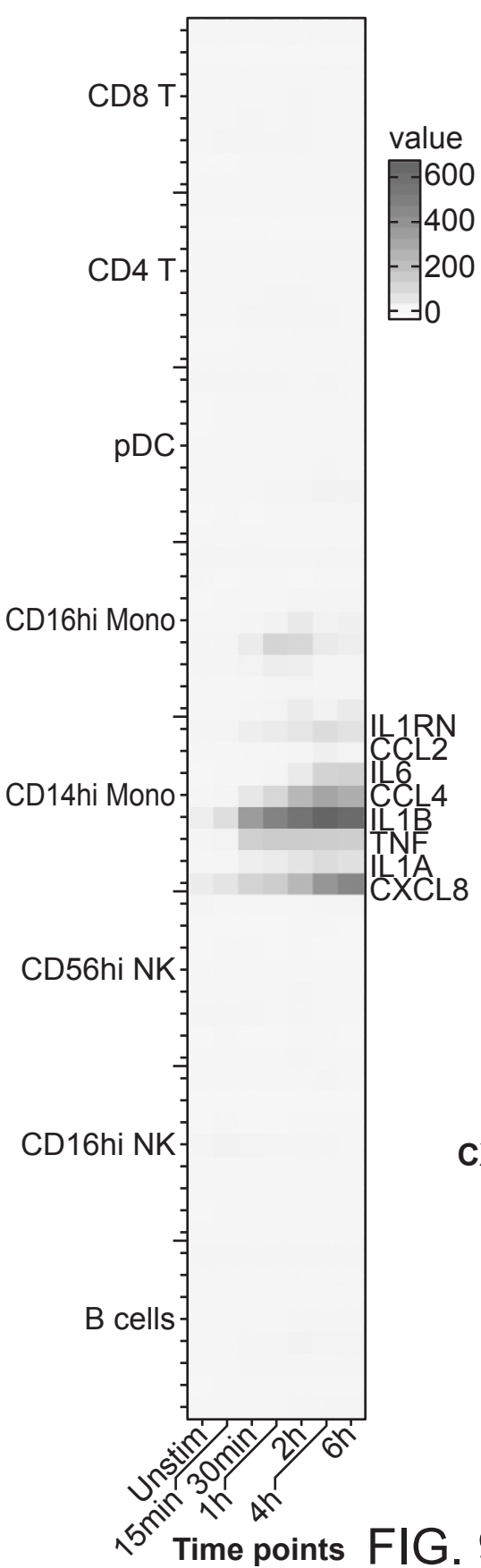


FIG. 9A



IL1RN
CCL2
IL6
CCL4
IL1B
TNF
IL1A
CXCL8

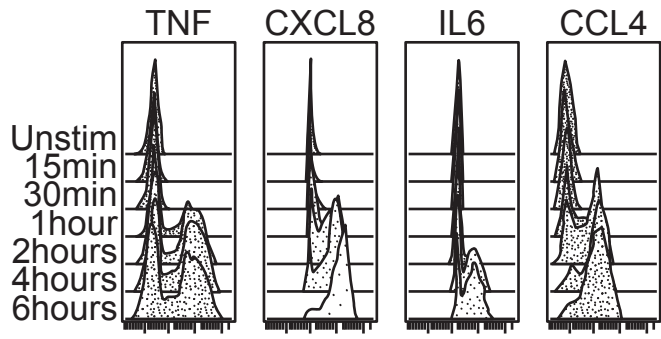


FIG. 9C

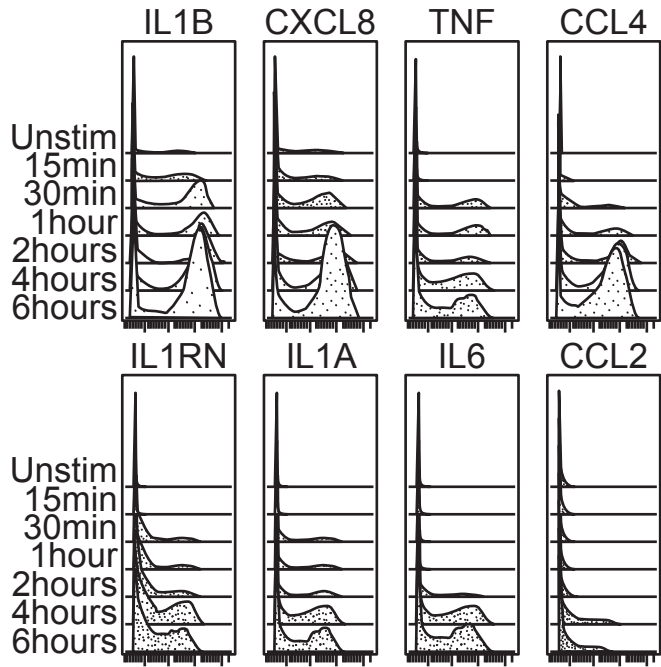


FIG. 9D

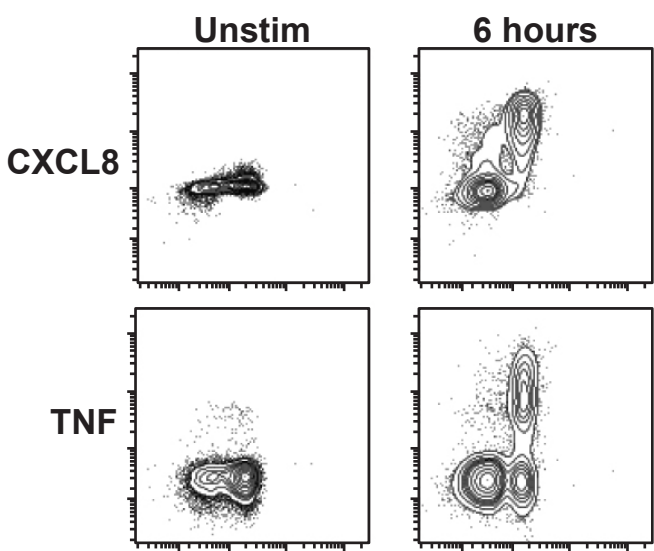


FIG. 9B

CD14

FIG. 9E

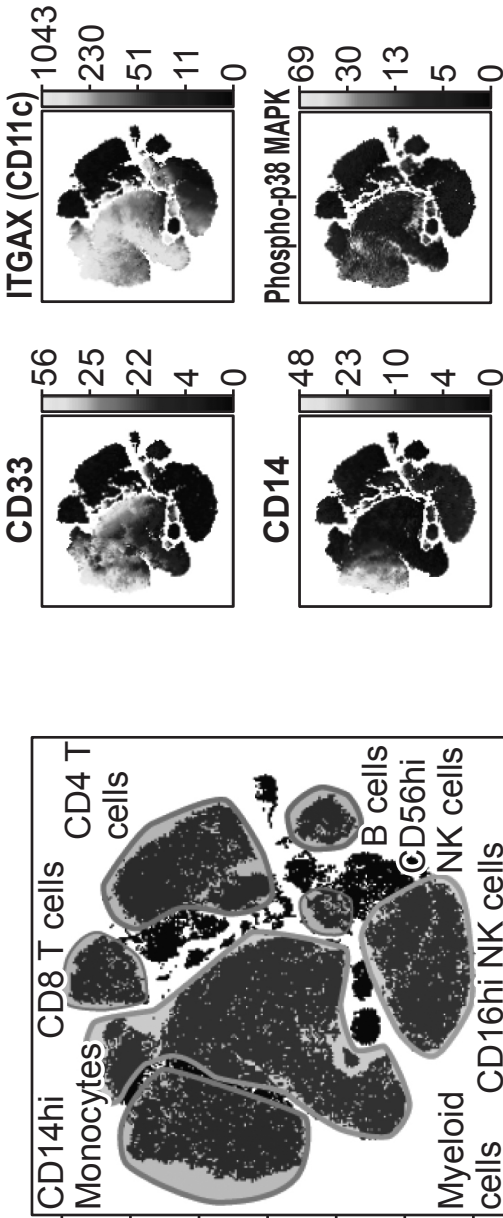
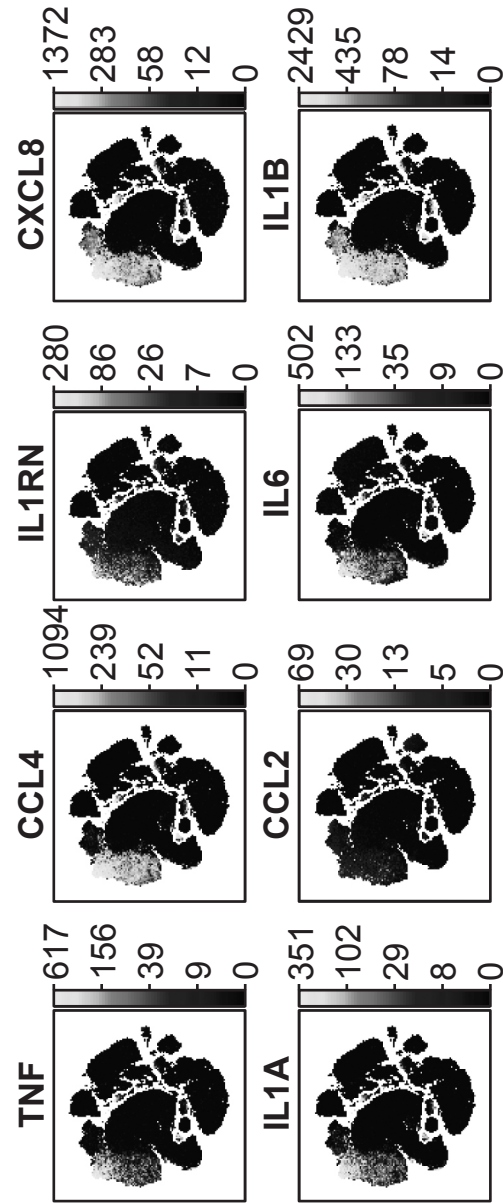


FIG. 10B



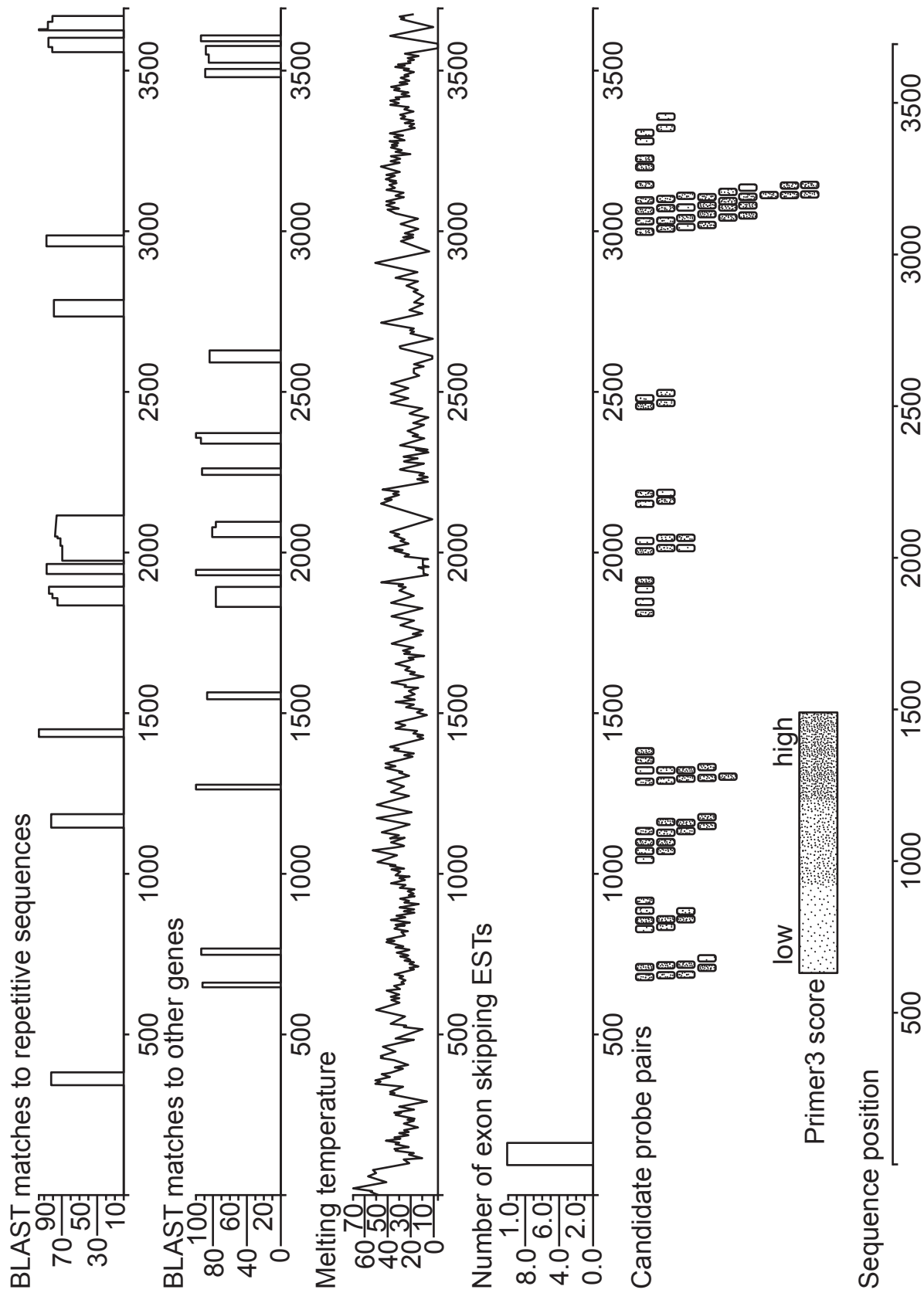


FIG. 11

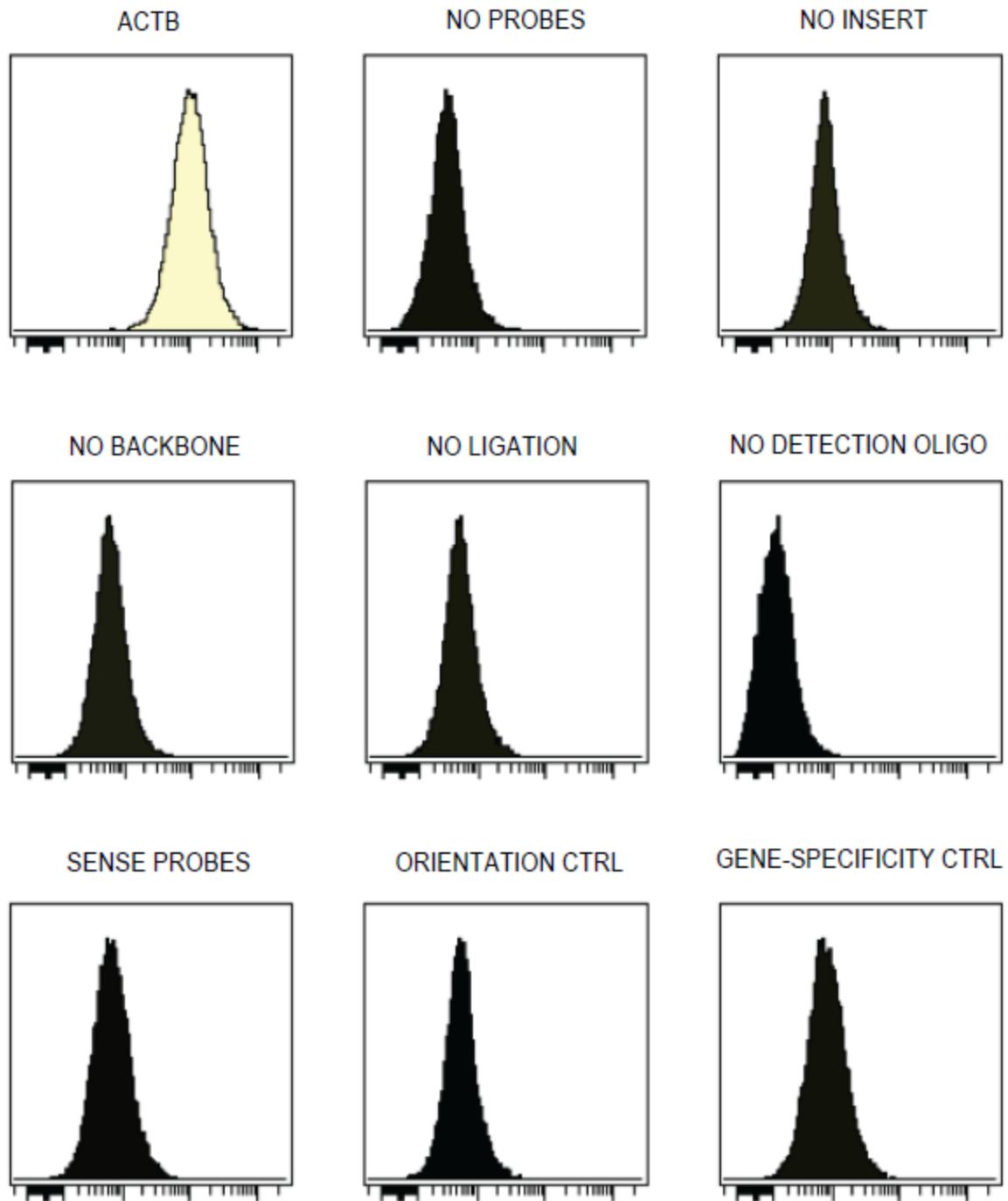


FIGURE 12

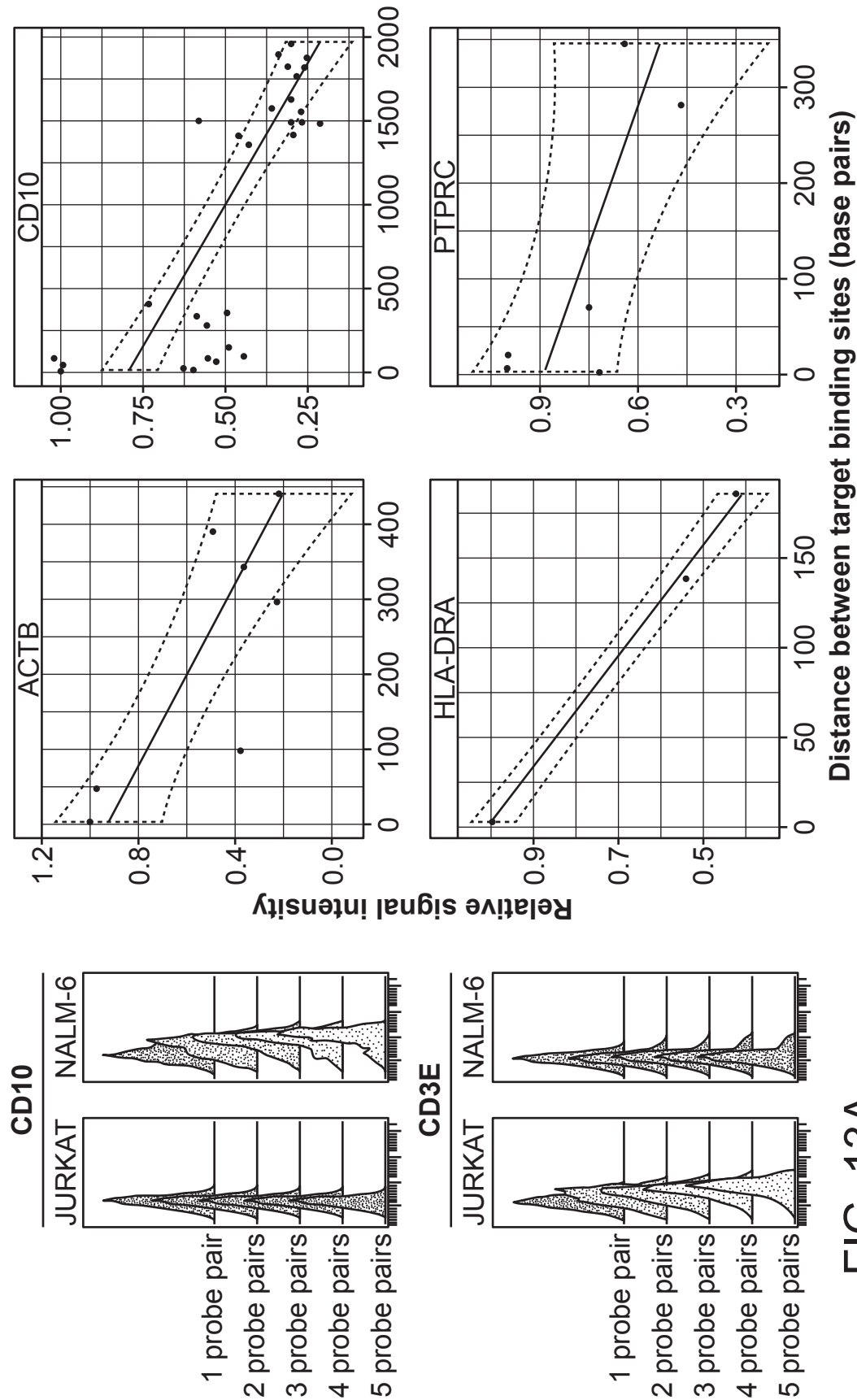


FIG. 13A

FIG. 13B

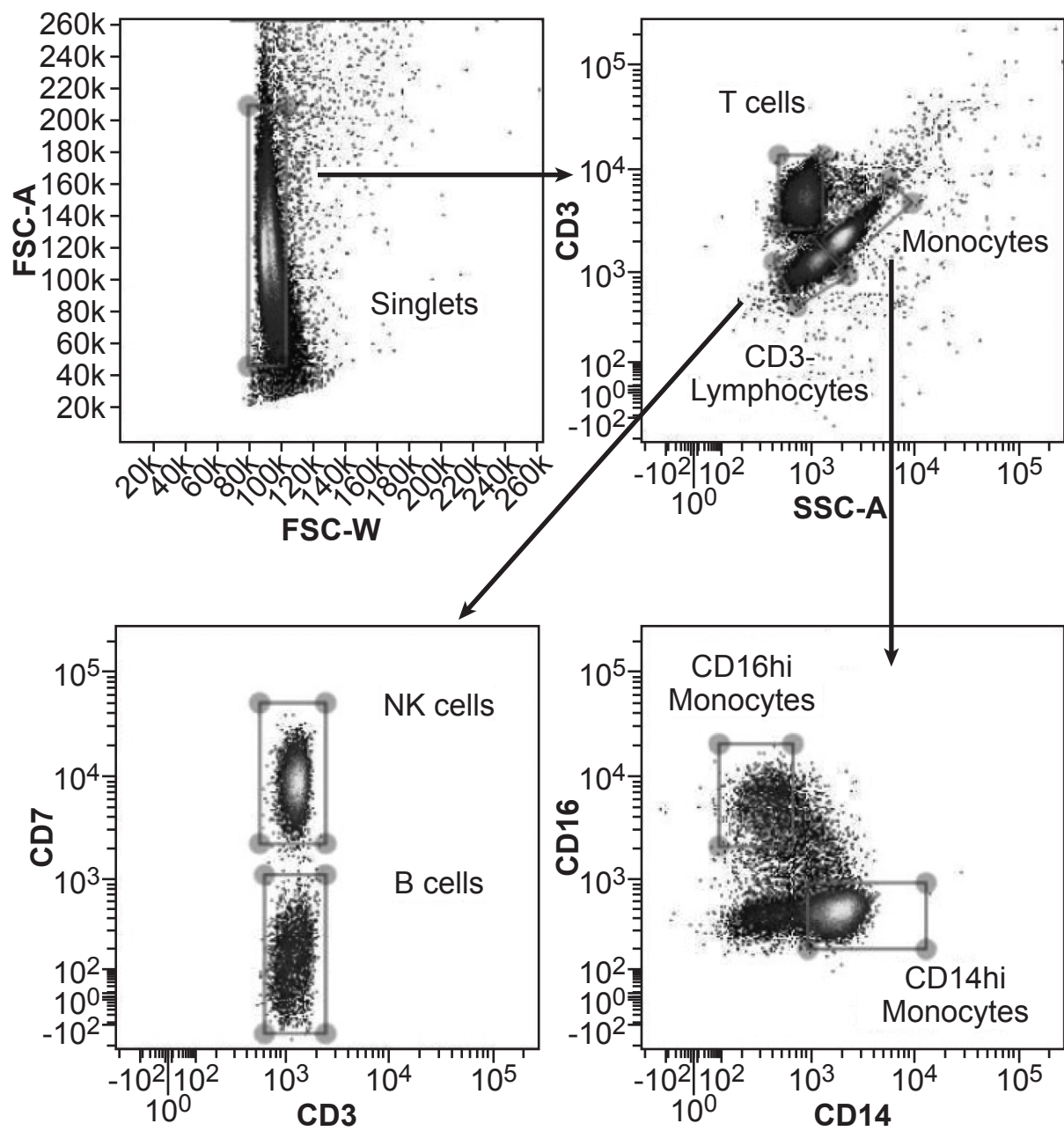


FIG. 14