

www.wipo.int/branddb

Global Brand Database

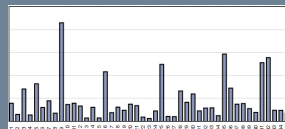
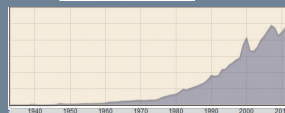
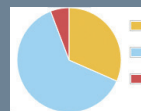
A free, public resource for searching trademark and other brand information

1 image = 1000 words

Upload an image to search for visually similar brands

Search features:

- powerful, fast & flexible in 14 data fields
- interactive & dynamic with immediate feedback
- “fuzzy”, phonetic and word-stem matches
- automatic suggestion of matches
- easy search of US or Vienna image class by description
- full boolean, proximity and range options
- unlimited, customizable results browsing
- saved searches and record sets
- instant, graphical data analysis



Collections:

Simultaneous search in over 25 million international and national records of 30 sources and growing...

International WIPO:

Madrid Trademark Registrations; Lisbon Appellations of Origin; Article 6ter emblems

National:

Algeria; Australia; Brunei; Cambodia; Canada; Denmark; Egypt; Estonia; European Union; Germany; Indonesia; Israel; Japan; Laos; Mexico; Moldova; Morocco; New Zealand; Oman; Papua New Guinea; Philippines; Republic of Korea; Singapore; Switzerland; Tonga; United Arab Emirates and United States of America