

## **PCT-SAFE Client Software**

### **Version 3.51.087.263 – 01 April 2019**

#### **Release Notes**

This document contains information and known issues with the version 3.51.087.263 of the PCT-SAFE Client software. Please e-mail any questions or comments relating to the PCT-SAFE Client, or to these release notes, to [pct.eservices@wipo.int](mailto:pct.eservices@wipo.int).

Version 3.51.087.263 is a full installation of the PCT-SAFE Client. This version may also be used to upgrade previous versions of the software. Please refer the 'Upgrade Instructions' below.

#### **Minimum system requirements:**

1. Computer processor: 600MHz; available hard disk space: 1GB; RAM: 256 MB
2. Internet connection for the purposes of online transmission (Internet Explorer or Mozilla Firefox for requesting/picking up WIPO Customer Certification Authority digital certificates)
3. Adobe Acrobat or Acrobat Reader, from version 7.x, or other PDF viewer software

**The software will run on Microsoft Windows® 7/8/10.**

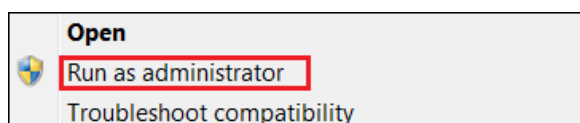
#### **Digital Certificate**

In order to sign and transmit fully electronic packages online, you will need a digital certificate. To obtain a digital certificate from the WIPO Customer Certification Authority, please follow the instructions and the User Guides at <https://www.wipo.int/pct-safe/en/certificates.html>.

#### **Installation Instructions (first installation)**

To install the software, it is necessary to run the downloaded file `pct-safe-3.51.087-bin.exe`.

In case of difficulty installing the PCT-SAFE software (encountering error messages), try to install the software by right clicking the exe file and selecting "run as administrator."



#### **Upgrade Instructions**

To upgrade one of the previous versions of the PCT-SAFE Client, please proceed as follows:

1. **Export any form and address book data to a folder outside the C:\PCT-SAFE folder as a backup** (guidelines on the export/import functionality can be found at [https://www.wipo.int/pct-safe/en/support/user\\_documentation.htm](https://www.wipo.int/pct-safe/en/support/user_documentation.htm)).
2. Ensure that PCT-SAFE is not running.
3. Run the `pct-safe-3.51.087-bin.exe` from the local drive, using the same installation destination directory (C:\PCT-SAFE) as the previous installation.
4. The previous installation will be overwritten.
5. During the installation, when prompted, accept the update of the demo and production databases.
6. During the installation, when prompted, 'overwrite all' existing fee schedules.
7. At the end of the installation you will need to restart the computer.

## PCT-SAFE Known Issues

**Headline:** Fully electronic filings.

**Detailed description:** As of the release date it is possible to file fully electronic PCT-SAFE applications with the following receiving Offices: AT (Austria), CA (Canada), CN (China), DE (Germany), EP (European Patent Office), ES (Spain), GB (United Kingdom), IL (Israel), KR (Republic of Korea) and NO (Norway), as well as with the receiving Office of the International Bureau of WIPO (RO/IB). Please contact the receiving Office concerned for further information on its requirements and procedure for filing fully electronic applications.

### Special information for users wishing to file with the United States Patent and Trademark Office (RO/US).

The RO/US only accepts fully electronic PCT filings via their EFS-Web filing system. Filers selecting RO/US create the request form, sign it, save the PCT-SAFE .zip file on the PC and upload it to the EFS-Web system with the other application documents. By uploading the zip file, the filer benefits from the PCT filing fee reduction for fully electronic applications with the request in character coded format. Please see our detailed "Instructions for the use of PCT-SAFE in combination with EFS-Web (e-filing with RO/US)" at [https://www.wipo.int/pct-safe/en/support/user\\_documentation.htm](https://www.wipo.int/pct-safe/en/support/user_documentation.htm).

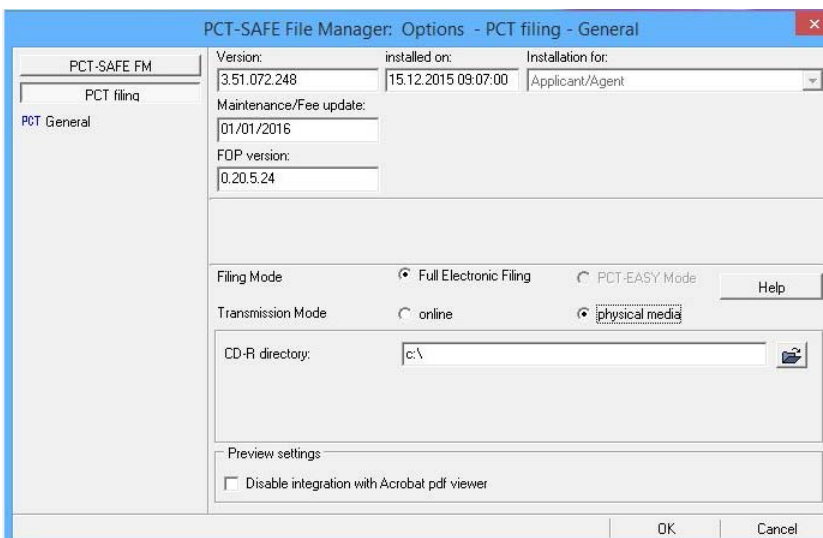
### ePCT-Filing

Filers are encouraged to move to ePCT-Filing – available in all ten publication languages – at their convenience. As of 01 April 2019, ePCT-Filing is available for online filing to the following receiving Offices: RO/IB, RO/AT, RO/AU, RO/AZ, RO/BG, RO/BN, RO/BR, RO/CA, RO/CH, RO/CL, RO/CO, RO/CR, RO/CU, RO/CZ, RO/DK, RO/DO, RO/DZ, RO/EA, RO/EE, RO/EG, RO/EP, RO/FI, RO/GE, RO/HR, RO/HU, RO/ID, RO/IN, RO/IR, RO/IS, RO/IT, RO/JO, RO/KE, RO/KR, RO/LV, RO/MA, RO/MX, RO/MY, RO/NO, RO/NZ, RO/OM, RO/PA, RO/PE, RO/PH, RO/PL, RO/PT, RO/QA, RO/RS, RO/RU, RO/SA, RO/SE, RO/SG, RO/SI, RO/SK, RO/TR and RO/ZA. For further information and to get started go to <https://pct.wipo.int> or contact the PCT eServices Help Desk.

RO/IL and RO/US: ePCT-Filing can also be used to prepare the request form and download it as a zip file for subsequent submission via the Office's electronic filing system (see *PCT Newsletter* No. 06/2016, pages 4 and 5 for further information at [https://www.wipo.int/edocs/pctdocs/en/2016/pct\\_news\\_2016\\_6.pdf](https://www.wipo.int/edocs/pctdocs/en/2016/pct_news_2016_6.pdf) )

**Headline:** Installation default mode of filing.

**Detailed description:** The installation default mode of filing is 'Fully electronic, online'. This means that filers who select an RO that does not accept direct online filing via PCT-SAFE, will need to manually modify the default filing mode in the PCT-SAFE File Manager settings.



**Headline:** Installation file and folder names.

**Detailed description:** To ensure that the PCT-SAFE software installs correctly users are advised not to modify the name of the installation file. Also, the target directory path (C:\PCT-SAFE) where PCT-SAFE is to be installed MUST NOT contain in its name any special and/or non-Latin alphabet characters.

**Headline:** Stand-alone installation.

**Detailed description:** PCT-SAFE is a stand-alone installation. It should not be installed over a network or on a shared drive. The Export/Import functionality should be used for the purposes of sharing data and the creation of data backup.

**Headline:** Password protection.

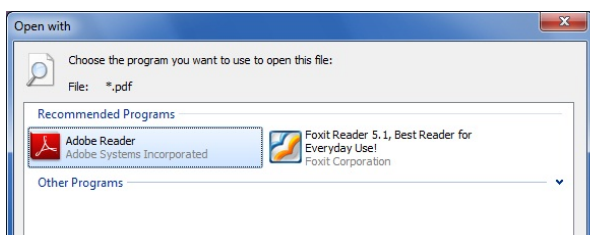
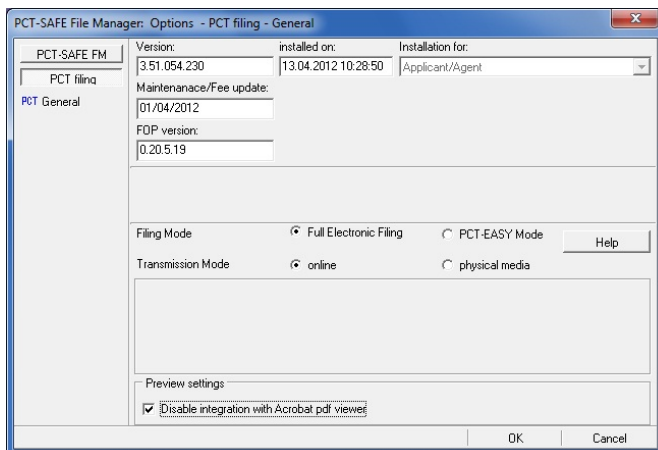
**Detailed description:** It is possible to password protect the PCT-SAFE software. Please note, however, that it is not possible for the PCT eServices Help Desk to recover forgotten passwords.

**Headline:** PCT-SAFE in languages using non-Latin alphabet fonts (i.e. Chinese, Japanese, Korean, Russian).

**Detailed description:** For fully electronic applications in non-Latin alphabet languages, the file path and file names of the text and drawings files (e.g. PDF), or of the application body (if filed in XML format) must be in Latin alphabet characters (i.e. letters a to z and digits 0 to 9). Accented characters and those belonging to the 'extended' Latin alphabet should also not be used (for example: é ü ç ř).

**Headline:** Difficulty previewing forms.

**Detailed description:** If the user has difficulty previewing the PDF forms the PCT-SAFE File Manager settings can be modified to disable the automatic use of the Acrobat PDF viewer and he can indicate which PDF viewer he wishes to use.



**Headline:** Difficulty attaching PDF files.

**Detailed description:** Problems attaching PDF files to PCT-SAFE forms may arise if the PDF file properties indicate a PDF version higher than 1.4 (Acrobat 5.x), e.g. PDF version 1.5 (Acrobat 6.x). When converting documents to PDF format it is advisable to check that the PDF compatibility is set to 1.4 (Acrobat 5.x). Further information on the technical requirements for PDF files can be found in Section 3.1.2 of Annex F to the Administrative Instructions under the PCT at:

[https://www.wipo.int/export/sites/www/pct/en/texts/pdf/ai\\_anf.pdf](https://www.wipo.int/export/sites/www/pct/en/texts/pdf/ai_anf.pdf).

[End of document]