

Minimal Specifications for Electronic PCT Document Exchange

Version Number 3.0

May 2, 2007

Document Information

Document title:	Minimal Specifications for Electronic PCT Document Exchange
Document file name:	Minimal Specification For Transmitting Documents To The IB V3.0.Doc
Issued by:	Peter Waring, Christophe Mazenc, Jim Fullton
Issue Date:	May 02, 2007
Status:	Approved

Table of Contents

1. EXECUTIVE SUMMARY	3
2. FORMAT SPECIFICATION.....	3
RULE 1 – SUPPORTED DOCUMENT FORMATS	4
RULE 2 – SUPPORTED DOCUMENT TYPES	5
RULE 3 – DOCUMENT WRAPPER FORMAT.....	6
<i>Rule 3.1 Document wrapper format</i>	<i>6</i>
<i>Rule 3.2 Document wrapper format (enhanced)</i>	<i>7</i>
<i>Rule 3.3 Document Packaging for Scanned record copies</i>	<i>9</i>
RULE 4 – DOCUMENT WRAPPER NAMING CONVENTION.....	10
RULE 5 – DOCUMENT INDEX DATA.....	11
<i>Rule 5.1 Document index data.....</i>	<i>11</i>
<i>Rule 5.2 Document index data (enhanced).....</i>	<i>11</i>
RULE 6 – EXCEPTIONAL DOCUMENT UPLOADS	13
RULE 7 – PACKAGE TRANSFER FAILURES	14
3. ANNEX.....	15

1. Executive summary

This minimal specification provides an easily implemented, temporary yet upward-extensible solution to the problem of electronic document exchange between the International Bureau, Patent Cooperation Treaty (PCT) member state intellectual property offices and PCT international authorities.

The use of this minimal specification will quickly provide benefits to the implementing PCT member state office or international authority and to the International Bureau both in terms of cost (through reductions in document printing, shipping, storage and disposal) and quality (fewer manual operations for the staff).

Electronic document exchange between PCT member states and the International Bureau is now a reality. The International Bureau has established the PCT-EDI Service to encourage member states to take immediate advantage of the cost savings and improved operational efficiencies potentially available through electronic data exchange with the International Bureau.

The following simple requirements were considered during the development of this minimal specification:

- (1) The specification should be sufficiently simple to both permit and encourage its implementation by any PCT member state office or international authority at a minimum cost.
- (2) The specification should be sufficiently flexible to allow the transmission of both scanned documents and electronically authored documents.
- (3) The specification should be “exchange media neutral”, e.g. it should make no assumptions as to the media used for electronic exchange.
- (4) The specification should be upward compatible with the new WIPO Standard ST.36 standard by using similar document structures.
- (5) The specification should facilitate efficient processing by the PCT Operations division at the International Bureau, reducing the administrative overhead and facilitating the creation of the electronic publication working copy.

Offices are strongly encouraged to transfer documents in the WIPO Standard ST.36 format to the International Bureau as a first choice, using unstructured formats only when their internal systems are not yet capable of processing documents fully compliant with WIPO Standard ST.36.

2. Format Specification

The format specification is designed for simplicity and ease of implementation at the lowest possible cost. It consists of five basic rules, based primarily upon existing WIPO standards and guidelines.

Rule 1 – Supported Document Formats

Each document is represented by a single file. The following file formats and types are supported by the International Bureau (listed in order of preference):

<i>Format</i>	<i>Description</i>
WIPO Standard ST.36	WIPO Standard ST.36 documents stored as Wrapped Application Documents (WAD)s or Wrapped and Signed Packages (WASP)s as per Annex F of the PCT Administrative Instructions
Record Copies	Record copies as defined in Annex F of the PCT Administrative Instructions.
Adobe PDF Format	Adobe PDF representations of documents, without encryption or other security protections. PDF-format documents should be in accordance with Annex F of the PCT Administrative Instructions. Fonts should be embedded where possible because where they are not embedded the documents may not be correctly rendered to images (screen, paper, tiff).
Machine Readable Character-coded data as per Bilateral Agreement	Other electronically authored documents: in certain cases, a specific format may be transmitted under bilateral agreement with the International Bureau (e.g. Microsoft Word 97 and up, non Annex F compliant PDF formats, RTF, etc). These formats are not desirable and can lead to problems for both parties (the IB and the sending RO).
Scanned Documents	<p>A set of black and white (ONE BIT PER PIXEL, not greyscale) TIFF V6, single strip, Intel encoded (little-endian) single A4 pages. Each page is represented by a single file, scanned at 300 dpi resolution and so identified in the TIFF header. Multi-page TIFF files are not supported. The set of document page files is transferred either:</p> <p>a) zipped into a wrapper file, the order of the pages being obtained by applying an alphabetic sort operation of the single page filenames, (e.g. TIFF page images, numbered 000001.tif – nnnnnn.tif) or</p> <p>b) wrapped in a PDF format file (TIFF images embedded in PDF)</p>
Sequence Listings	Sequence listings stored in ST.25 format.

Rule 2 – Supported Document Types

The document types defined in detail in the Annex are supported.

Any document not exactly corresponding to one of those document types shall be sent with the document type designation of “other”. This means that the International Bureau will visually check the document and determine the associated PCT document type, potentially splitting the document into several sub documents or merging it with others, before examining it. The use of the “other” document type should be avoided whenever possible.

The document types were originally directly obtained from the set of electronic filing DTDs published on the WIPO web site (<http://www.wipo.int/>), and have subsequently been added to as required. This permits electronic documents sent to the International Bureau to be easily transferred later to other parties (Designated Offices, etc.) using WIPO Standard ST.36 data encoding, and allows the offices a migration path to full WIPO Standard ST.36 support.

Rule 3 – Document Wrapper Format

Document wrapper format 3.1 - For offices where we have agreed transfers prior to 2007, we have used a packaging scheme where relationships between documents in a given batch are not retained and thus it is more difficult to create business transaction work items in the IB system. This scheme remains valid and supported by the IB. No date has been set for the deprecation of the use of this scheme, however it should be noted that, at the time of writing, the IB encourages offices following this scheme to consider migrating to the revised scheme 3.2.

Document wrapper format (enhanced) 3.2 - For offices where we have agreed transfers after 2006, we have encouraged the use of a packaging scheme where relationships (e.g. priority document plus accompanying letter) between documents in a given batch are retained.

Document Packaging for Scanned record copies 3.3 - For scanned record copies the collection of sub-documents are gathered together in a single zipfile.

Rule 3.1 Document wrapper format

The documents are transmitted and stored in a hierarchical directory structure consisting of 2 “levels”:

Level 1: WIPO Standard ST.3 code of the transmitting office, date of transmission in local office time, sequential number of the transmission in the day. e.g. US-20041102-000001, JP-20041025-000001 or KR-20041119-000001.

Level 2: PCT Number, or the string PCTXXXXXXXXXXXX (“PCT” followed by twelve ASCII 88/0x130 characters) if the PCT number is not known or not applicable.

This hierarchical structure is preserved in transmission by storing the Level 1 directory in either a “zip” or “tar” file, as shown in the example below:

```

[psys@pctftp Minimum Specification Examples]# unzip -l KR-20041122-1
Archive:  KR-20041122-1.zip
Length   Date    Time    Name
-----
0        01-26-05 12:09  KR-20041122-1/
196     01-26-05 12:09  KR-20041122-1/KR_20041122_1.csv
0        01-26-05 12:10  KR-20041122-1/PCTKR2004002518/
340585  11-15-04 22:09  KR-20041122-1/PCTKR2004002518/PCTKR2004002518-reco-000001-K0.wsp
129514  11-15-04 22:12  KR-20041122-1/PCTKR2004002518/PCTKR2004002518-tapp-000001-EN.wsp
0        01-26-05 12:11  KR-20041122-1/PCTKR2004002519/
476450  11-15-04 22:10  KR-20041122-1/PCTKR2004002519/PCTKR2004002519-reco-000001-K0.wsp
196161  11-15-04 22:12  KR-20041122-1/PCTKR2004002519/PCTKR2004002519-tapp-000001-EN.wsp
-----
1142906                8 files
[psys@pctftp Minimum Specification Examples]#

```

Rule 3.2 Document wrapper format (enhanced)

The image below shows a screen-shot of a package received from US.

Documents for each IA are contained in folders for each IA. These folders are named as follows:

<ia_number>[-<series-number>] Series number is optional

The naming structure allows for the grouping of documents into business transactions – where a letter is attached to another document etc. Thus in the case where the RO has one or more documents for an IA that has no known grouping they should be sent in a folder simply using the IA number (i.e pctKR2006123456); in the case where there are groups of documents for an IA they should be sent in a folder with the IA Number and a series number (i.e. pctKR2006123456-000001) – if there are 2 groups for an IA then a second folder would be expected (i.e. pctKR2006123456-000002) and if there is a single grouping plus some ‘other’ unrelated documents then we would expect folders pctKR2006123456 and pctKR2006123456-000001

A CSV file is in the root directory of the zipfile (with the same name as the zipfile (csv replacing zip)).

Name	Modified	Size	Ratio	Packed	CRC	Attributes	Path
PCTUS2004015763-asfiled-000001-EN-20070208.wad	14/02/07 4:50 PM	150,872	0%	150,841	e2...	A	pctus2004015763-000001\
PCTUS2004015910-asfiled-000001-EN-20070208.wad	14/02/07 4:50 PM	73,647	0%	73,662	82...	A	pctus2004015910-000001\
PCTUS2005025013-asfiled-000001-EN-20070207.wad	14/02/07 4:53 PM	74,428	0%	74,443	23...	A	pctus2005025013-000001\
PCTUS2006006196-asfiled-000001-EN-20070207.wad	14/02/07 4:53 PM	73,802	0%	73,817	5e...	A	pctus2006006196-000001\
PCTUS2006047232-reco-000001-EN.zip	14/02/07 5:37 PM	2,760	0%	2,760	cf...	A	pctus2006047232\
PCTUS2006047296-reco-000001-EN.zip	14/02/07 5:36 PM	2,731	0%	2,731	cd...	A	pctus2006047296\
PCTUS2006047300-reco-000001-EN.zip	14/02/07 5:36 PM	2,845	0%	2,845	dl...	A	pctus2006047300\
PCTUS2006047301-reco-000001-EN.zip	14/02/07 5:35 PM	2,872	0%	2,872	10...	A	pctus2006047301\
PCTUS2006047302-reco-000001-EN.zip	14/02/07 5:34 PM	2,747	0%	2,747	84...	A	pctus2006047302\
PCTUS2006060084-asfiled-000001-EN-20070129.wad	14/02/07 4:47 PM	10,371,151	0%	10,372...	b2...	A	pctus2006060084-000001\
PCTUS2006060084-crsp-000001-EN-20070129.zip	14/02/07 4:47 PM	60,715	0%	60,715	c2...	A	pctus2006060084-000001\
PCTUS2006060084-rpd-000001-EN-20070129.zip	14/02/07 4:47 PM	5,918,881	0%	5,918,...	be...	A	pctus2006060084-000001\
PCTUS2006060084-xmre-000001-EN-20070129.zip	14/02/07 4:48 PM	44,206	0%	44,206	91...	A	pctus2006060084-000001\
PCTUS2006060085-asfiled-000001-EN-20070116.wad	14/02/07 4:45 PM	204,424	0%	204,459	2f...	A	pctus2006060085-000001\
PCTUS2006060085-crsp-000001-EN-20070116.zip	14/02/07 4:46 PM	79,818	0%	79,818	d0...	A	pctus2006060085-000001\
PCTUS2006060085-xmre-000001-EN-20070116.zip	14/02/07 4:46 PM	34,429	0%	34,429	e4...	A	pctus2006060085-000001\
PCTUS2006060090-asfiled-000001-EN-20070206.wad	14/02/07 4:44 PM	335,132	0%	335,181	b7...	A	pctus2006060090-000001\
PCTUS2006060090-crsp-000001-EN-20070206.zip	14/02/07 4:44 PM	25,042	0%	25,042	15...	A	pctus2006060090-000001\
PCTUS2006060090-rpq-000001-EN-20070206.zip	14/02/07 4:44 PM	127,888	0%	127,888	94...	A	pctus2006060090-000001\
PCTUS2006060090-xmre-000001-EN-20070206.zip	14/02/07 4:45 PM	46,648	0%	46,648	d7...	A	pctus2006060090-000001\
PCTUS2006060093-abst-000001-EN-20070110.zip	14/02/07 4:42 PM	13,235	0%	13,235	6d...	A	pctus2006060093-000001\
PCTUS2006060093-asfiled-000001-EN-20070110.wad	14/02/07 4:42 PM	202,957	0%	202,962	21...	A	pctus2006060093-000001\
PCTUS2006060093-crsp-000001-EN-20070110.zip	14/02/07 4:42 PM	11,610	0%	11,610	a7...	A	pctus2006060093-000001\
PCTUS2006060093-rpq-000001-EN-20070110.zip	14/02/07 4:43 PM	99,608	0%	99,608	db...	A	pctus2006060093-000001\
PCTUS2006060093-xmre-000001-EN-20070110.zip	14/02/07 4:43 PM	37,472	0%	37,472	c5...	A	pctus2006060093-000001\
PCTUS2006060802-reco-000001-EN.zip	14/02/07 5:34 PM	3,984,533	0%	3,984,...	84...	A	pctus2006060802\
PCTUS2006061541-reco-000001-EN.zip	14/02/07 5:33 PM	2,920,441	0%	2,920,...	47...	A	pctus2006061541\
PCTUS2006062233-reco-000001-EN.zip	14/02/07 5:32 PM	7,258,849	0%	7,258,...	ab...	A	pctus2006062233\
PCTUS2006062234-reco-000001-EN.zip	14/02/07 5:31 PM	3,002,723	0%	3,002,...	39...	A	pctus2006062234\
PCTUS2006062424-reco-000001-EN.zip	14/02/07 5:31 PM	2,581,354	0%	2,581,...	44...	A	pctus2006062424\
US-20070213-000001.csv	14/02/07 5:26 PM	9,098	92%	714	bf...	A	

The zip file is named as follows:

RO yyyymmdd-nnnnnn.zip

Where

RO is the 2 letter office code (in this case US)

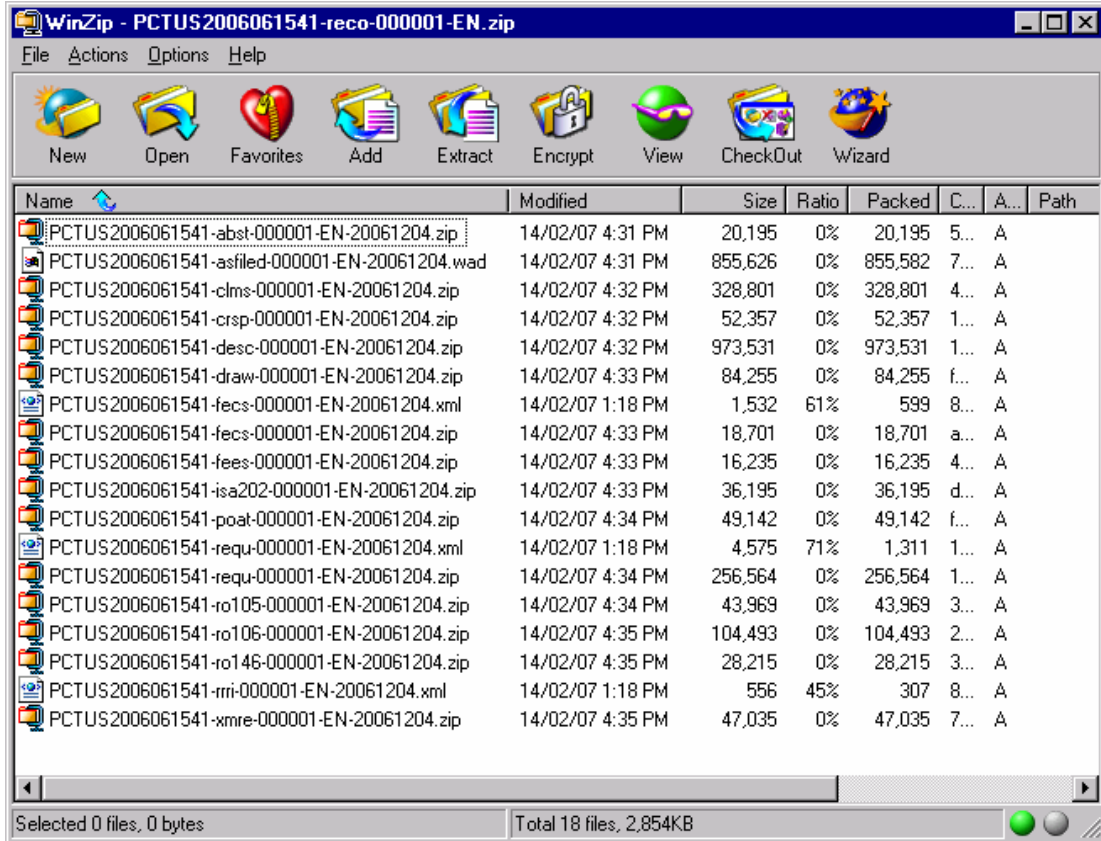
Yyyymmdd is the date of sending, not the date that the package was put together (in this case 20070213)

And nnnnnn is a sequential counter incremented with each wrapper file sent by the office in a given year

Rule 3.3 Document Packaging for Scanned record copies

For scanned record copies the collection of sub-documents are gathered together in a single zipfile that is inserted into the batch transfer package to be sent by an office.

All the contained documents are named according to the minimum-specification [this document] and are placed in the zipfile at the root directory level (there should be no sub-folders). See screenshot below:

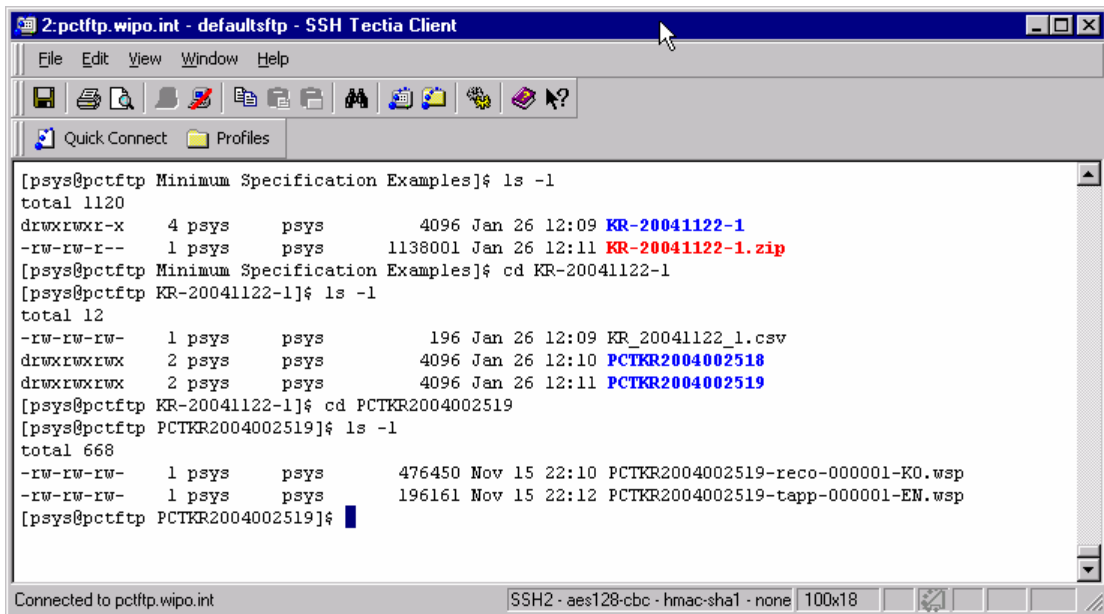


Rule 4 – Document Wrapper Naming Convention

The name of a wrapper file is composed of either five or six consecutive parts separated by dashes (using an extended version of the Annex F File Naming Conventions):

- The PCT Number, or the string PCTXXXXXXXXXXXX if the number is not known.
- The document type code in lower case (see the annex for the document types)
- A numeric string NNNNNN to make the filename unique within its directory
NNNNNN is a number right justified and padded with leading zeros
- The upper case ISO639 code representing the language of the document or XX if unknown
- Any optional additional bibliographic data information (format depending on the document type, see Annex)
- The “wad”, “wsp”, “.pdf”, “.doc” or the “.zip” extension.

Note that for characters uppercase is preferred for readability, but the EDI service is character case independent for file and folder names.



```
[psys@pctftp Minimum Specification Examples]# ls -l
total 1120
drwxrwxr-x  4 psys  psys      4096 Jan 26 12:09 KR-20041122-1
-rw-rw-r--  1 psys  psys     1138001 Jan 26 12:11 KR-20041122-1.zip
[psys@pctftp Minimum Specification Examples]# cd KR-20041122-1
[psys@pctftp KR-20041122-1]# ls -l
total 12
-rw-rw-rw-  1 psys  psys      196 Jan 26 12:09 KR_20041122_1.csv
drwxrwxrwx  2 psys  psys     4096 Jan 26 12:10 PCTKR2004002518
drwxrwxrwx  2 psys  psys     4096 Jan 26 12:11 PCTKR2004002519
[psys@pctftp KR-20041122-1]# cd PCTKR2004002519
[psys@pctftp PCTKR2004002519]# ls -l
total 668
-rw-rw-rw-  1 psys  psys    476450 Nov 15 22:10 PCTKR2004002519-reco-000001-KO.wsp
-rw-rw-rw-  1 psys  psys    196161 Nov 15 22:12 PCTKR2004002519-tapp-000001-EN.wsp
[psys@pctftp PCTKR2004002519]#
```

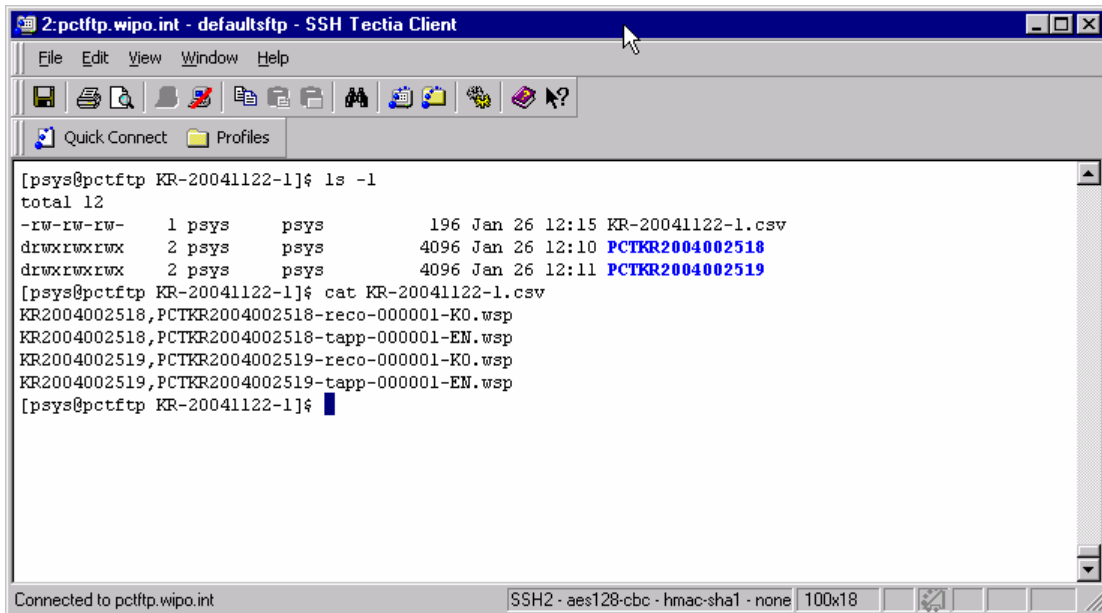
Rule 5 – Document Index Data

Rule 5.1 Document index data - For offices where we have agreed transfers prior to 2007 we have used a packaging scheme where relationships between documents in a given batch are not retained and thus it is more difficult to create business transaction work items in the IB system. This scheme remains valid and supported by the IB. No date as been set for the deprecation of the use of this scheme, however it should be noted that, at the time of writing, the IB encourages offices following this scheme to consider migrating to the revised scheme 5.2.

Rule 5.2 Document index data (enhanced) - For offices where we have agreed transfers after 2006, we have encouraged the use of a packaging scheme where relationships (e.g. priority document plus accompanying letter) between documents in a given batch are retained.

Rule 5.1 Document index data

The transmitted documents are accompanied by an index file in Comma Separated Value (csv) format. This index file is saved under the level 1 directory. Its name is composed of the level 1 directory name with the extension .csv. The CSV file contains an entry for each transmitted document, with the first column containing the PCT number and the second column the name of the document file. This index allows confirmation that no documents were lost in the transmission.



```
2:pctftp.wipo.int - defaultsftp - SSH Tectia Client
File Edit View Window Help
Quick Connect Profiles
[psys@pctftp KR-20041122-1]# ls -l
total 12
-rw-rw-rw- 1 psys psys 196 Jan 26 12:15 KR-20041122-1.csv
drwxrwxrwx 2 psys psys 4096 Jan 26 12:10 PCTKR2004002518
drwxrwxrwx 2 psys psys 4096 Jan 26 12:11 PCTKR2004002519
[psys@pctftp KR-20041122-1]# cat KR-20041122-1.csv
KR2004002518,PCTKR2004002518-reco-000001-KO.wsp
KR2004002518,PCTKR2004002518-tapp-000001-EN.wsp
KR2004002519,PCTKR2004002519-reco-000001-KO.wsp
KR2004002519,PCTKR2004002519-tapp-000001-EN.wsp
[psys@pctftp KR-20041122-1]#
```

Rule 5.2 Document index data (enhanced)

The CSV file contains 2 columns (one row per document file):

- A Folder name
- B The document file name

	A	B	C	D	E	F	G	H
80	PCTUS2006060802-reco-000001-EN.zip	PCTUS2006060802-requ-000001-EN-20061110.xml						
81	PCTUS2006060802-reco-000001-EN.zip	PCTUS2006060802-rri-000001-EN-20061110.xml						
82	PCTUS2006047302-reco-000001-EN.zip	PCTUS2006047302-fecs-000001-EN-20061212.xml						
83	PCTUS2006047302-reco-000001-EN.zip	PCTUS2006047302-requ-000001-EN-20061212.xml						
84	PCTUS2006047302-reco-000001-EN.zip	PCTUS2006047302-rri-000001-EN-20061212.xml						
85	PCTUS2006047301-reco-000001-EN.zip	PCTUS2006047301-fecs-000001-EN-20061211.xml						
86	PCTUS2006047301-reco-000001-EN.zip	PCTUS2006047301-requ-000001-EN-20061211.xml						
87	PCTUS2006047301-reco-000001-EN.zip	PCTUS2006047301-rri-000001-EN-20061211.xml						
88	PCTUS2006047300-reco-000001-EN.zip	PCTUS2006047300-fecs-000001-EN-20061211.xml						
89	PCTUS2006047300-reco-000001-EN.zip	PCTUS2006047300-requ-000001-EN-20061211.xml						
90	PCTUS2006047300-reco-000001-EN.zip	PCTUS2006047300-rri-000001-EN-20061211.xml						
91	PCTUS2006047296-reco-000001-EN.zip	PCTUS2006047296-fecs-000001-EN-20061212.xml						
92	PCTUS2006047296-reco-000001-EN.zip	PCTUS2006047296-requ-000001-EN-20061212.xml						
93	PCTUS2006047296-reco-000001-EN.zip	PCTUS2006047296-rri-000001-EN-20061212.xml						
94	PCTUS2006047232-reco-000001-EN.zip	PCTUS2006047232-fecs-000001-EN-20061208.xml						
95	PCTUS2006047232-reco-000001-EN.zip	PCTUS2006047232-requ-000001-EN-20061208.xml						
96	PCTUS2006047232-reco-000001-EN.zip	PCTUS2006047232-rri-000001-EN-20061208.xml						
97	PCTUS2006060084-000001	PCTUS2006060084-asfiled-000001-EN-20070129.wad						
98	PCTUS2006060084-000001	PCTUS2006060084-crsp-000001-EN-20070129.zip						
99	PCTUS2006060084-000001	PCTUS2006060084-rprd-000001-EN-20070129.zip						
100	PCTUS2006060084-000001	PCTUS2006060084-xmre-000001-EN-20070129.zip						
101	PCTUS2006060085-000001	PCTUS2006060085-asfiled-000001-EN-20070116.wad						
102	PCTUS2006060085-000001	PCTUS2006060085-crsp-000001-EN-20070116.zip						
103	PCTUS2006060085-000001	PCTUS2006060085-xmre-000001-EN-20070116.zip						
104	PCTUS2006060090-000001	PCTUS2006060090-asfiled-000001-EN-20070206.wad						
105	PCTUS2006060090-000001	PCTUS2006060090-crsp-000001-EN-20070206.zip						
106	PCTUS2006060090-000001	PCTUS2006060090-rpqu-000001-EN-20070206.zip						
107	PCTUS2006060090-000001	PCTUS2006060090-xmre-000001-EN-20070206.zip						
108	PCTUS2006060093-000001	PCTUS2006060093-asfiled-000001-EN-20071010.wad						
109	PCTUS2006060093-000001	PCTUS2006060093-abst-000001-EN-20070110.zip						
110	PCTUS2006060093-000001	PCTUS2006060093-crsp-000001-EN-20070110.zip						
111	PCTUS2006060093-000001	PCTUS2006060093-rpqu-000001-EN-20070110.zip						
112	PCTUS2006060093-000001	PCTUS2006060093-xmre-000001-EN-20070110.zip						
113	PCTUS2004015763-000001	PCTUS2004015763-asfiled-000001-EN-20070208.wad						
114	PCTUS2004015910-000001	PCTUS2004015910-asfiled-000001-EN-20070208.wad						
115	PCTUS2005025013-000001	PCTUS2005025013-asfiled-000001-EN-20070207.wad						

It should be noted that, in the example above, the reco document entries have been expanded to additionally list their contents to enable validation of their reception as though they were folders.

Rule 6 – Exceptional Document Uploads

This rule is applicable for documents satisfying the conditions below:

- Rule 19.4 record copy filings
- Record copy filings subject to national security concerns
- Very large documents (e.g 1 gigabyte in size)

These document uploads require special handling and the provisions for their handling are as follows:

(a) Rule 19.4 record copy filings

either

package the record copies in the normal office package, with the exception that the document type is 'reco194' (as per the Annex) instead of 'reco' (this is the preferred of the two options),

or

name each record copy in accordance with Rule 2 as normal and upload files to the directory: 'upload-roib194'.

(b) Record copy filings subject to national security concerns

The security statement should be uploaded as part of a normal package with the document type 'secu' as specified in the Annex.

(c) Very large documents

either

Upload files INDIVIDUALLY to the directory: upload-vld

or

Send individual files to the IB on DVD with an appropriate covering letter.

Name each file in accordance with Rule 2

Do not package the documents in accordance with Rule 3

Rule 7 – Package transfer failures

Where an entire batch transmission has failed the entire package file should be resent using the original name.

3. ANNEX

Please note that all dates follow the YYYYMMDD format.

<i>Document Type</i>	<i>Code</i>	<i>Description (E-Filing Tag name)</i>	<i>Allowed file formats</i>	<i>Wrapper file naming convention</i>
abstract	abst	Abstract of the application (part of the application body)	.pdf .doc .zip	Additional Biblio Data: Date of receipt at transmitting office e.g.: PCTUS2004005602-abst-000001-EN-20050531.doc
amend-claims	amcl	Amended claims under Article 19 (ST36 document). Normally expected from the Applicant.	.wad .wsp	Additional Biblio Data: Date of receipt at transmitting office e.g.: PCTUS2004005602-amcl-000001-EN-20050531.wad
amend-statement	amst	Statement describing the amendment of the claims (PCT Article 19.1, PCT Rule 46.4). Normally expected from the Applicant.	.pdf .doc .zip	Additional Biblio Data: Date of receipt at transmitting office e.g.: PCTUS2004005602-amst-000001-EN-20050531.zip

Applicants-request-for-publication-of-late-correction	rlpc	Applicant's Request for publication of late furnished correction/addition p.claim (Rule 26bis.2(e))	.pdf .doc .zip	Additional Biblio Data: Date of receipt at transmitting office e.g.: PCTUS2004005602-rlpc-000001-EN-20050531.zip
Applicants-request-for-publication-relating-to-pdoc-discrepancy-or void	rppc	Applicant's request for publication of info relating to p.claim declared void, discrepancy with priority document etc (Rule 26bis.2(d))	.pdf .doc .zip	Additional Biblio Data: Date of receipt at transmitting office e.g.: PCTUS2004005602-rppc-000001-EN-20050531.zip
applicants-statement-of-reasons	stpr	Applicant's "Statement of Reasons" (may include Applicant's request for restoration of priority rights) (Rule 26bis.3)	.pdf .doc .zip	Additional Biblio Data: Date of receipt at transmitting office e.g.: PCTUS2004005602-stpr-000001-EN-20050531.zip
as-filed-document	asfiled	As filed document with no transformations (from the applicants submission) applied. Note such documnts should ALWAYS be wrapped in a zip file.	.zip	Additional Biblio Data: Date of receipt at transmitting office e.g.: PCTUS2004005602-asfiled-000001-EN-20050531.zip
claims	clms	Claims of the application (part of the application body)	.pdf .doc .zip	Additional Biblio Data: Date of receipt at transmitting office e.g.: PCTUS2004005602-clms-000001-EN-20050531.pdf
conf-r20.6-incorp-by-ref	incr	Applicant's confirmation of request for incorporation by reference (Rule 20.6)	.pdf .doc .zip	Additional Biblio Data: Date of receipt at transmitting office e.g.: PCTUS2004005602-incr-000001-EN-20050531.pdf
Copy-of-earlier-filed-application	eapp	Copy of earlier application (for incorporation by reference)	.pdf .doc .zip	Additional Biblio Data: Date of receipt at transmitting office e.g.:

				PCTUS2004005602-eapp-000001-EN-20050531.zip
declaration	decl	Declaration where the specific declaration type is not known (Rule 4.17)	.pdf .doc .zip	Additional Biblio Data: Date of receipt at transmitting office e.g.: PCTUS2004005602-decl-000001-EN-20050212.pdf
Declaration-in-support-of-request-for-restoration-of-priority-claim	rspr	Declaration/Evidence Filed in support of request for restoration of priority rights (Rule 26bis.3)	.pdf .doc .zip	Additional Biblio Data: Date of receipt at transmitting office e.g.: PCTUS2004005602-rspr-000001-EN-20050531.zip
demand	dmnd	Chapter II demand	.pdf .doc .zip	Additional Biblio Data: Date of receipt at the IPEA: YYYYMMDD or XXXXXXXX if not known e.g.: PCTUS2004005602-dmnd-000001-EN-20040202.zip
description	desc	Description of the application (part of the application body)	.pdf .doc .zip	Additional Biblio Data: Date of receipt at transmitting office e.g.: PCTUS2004005602-desc-000001-EN-20050531.zip
drawings	draw	Drawings of the application (part of the application body)	.pdf .doc .zip	Additional Biblio Data: Date of receipt at transmitting office e.g.: PCTUS2004005602-draw-000001-EN-20050531.zip
easy-file	easy	The bibliographic data file from the easy diskette	.zip	Additional Biblio Data: PCTUS2004005602-easy-000001-EN.zip
english-translation-of-iper	ipet	English translation of International Preliminary Examination Report	.pdf .doc .zip	Additional Biblio Data: IPEA Date of establishment of the IPER (XXXXXXX if unknown) e.g.:

				PCTUS2003000102-ipet-000001-EN-US-20031205.zip
english-translation-of-iprp2	iprt	English translation of International Preliminary Report on Patentability (chapter 2)	.pdf .doc .zip	Additional Biblio Data: IPEA (e.g. EP) Date of establishment of the IPRP2(XXXXXXXX if unknown) e.g.: PCTUS2004000052-iprt-000001-EN-US-20041001.zip
english-translation-of-non-establishment-of-international-search-report	a17t	English translation of non establishment of international search report from the ISA under Article 17.2(a)	.pdf .doc .zip	Additional Biblio Data: ISA (country code) Date of mailing of the Article 17.2a to the Applicant e.g.: PCTUS2004005602-a17t-000001-EN-US-20040810.zip
english-translation-of-international-application	tapp	English translation of the international application (ST36 document)	wad .wsp	Additional Biblio Data: Date of receipt at transmitting office PCTKR2004000602-tapp-000001-EN-20040808.wsp
english-translation-of-search-report	isrt	English translation of the International Search Report	.pdf .doc .zip	Additional Biblio Data: ISA (country code) Date of mailing of the search report to the Applicant e.g.: PCTUS2004005602-isrt-000001-EN-US-20040810.zip
english-translation-of-wosa	ewos	English translation of the Written Opinion by International Search Authority	.pdf .doc .zip	Additional Biblio Data: ISA (country code) Date of mailing of the wosa to the Applicant Date of completion of the WOSA e.g.: PCTUS2004005602-ewos-

				000001-EN-US-20041008-20040401.zip
entitlement-to-be-granted-patent	ebgp	Declaration of entitlement-to-be-granted-patent under Rule 4.17(ii)	.pdf .doc .zip	Additional Biblio Data: Date of receipt at transmitting office e.g.: PCTUS2004005602-ebgp-000001-EN-20040808.zip
entitlement-to-claim-priority	etcp	Declaration of entitlement-to-claim-priority under Rule 4.17(iii)	.pdf .doc .zip	Additional Biblio Data: Date of receipt at transmitting office e.g.: PCTUS2004005602-etcp-000001-EN-20040808.zip
fee-calculation-sheet	fecs	PCT fee calculation sheet	.pdf .doc .zip	Additional Biblio Data: Date of receipt at transmitting office e.g.: PCTUS2004005602-fecs-000001-EN-20040808.zip
fee-office-info	feei	Additional fee information in an office specific format	.pdf .doc .zip	Additional Biblio Data: Date of receipt at transmitting office e.g.: PCTUS2004005602-feei-000001-EN-20040808.zip
fee-xml	fees	fee data in XML format.	.xml	Additional Biblio Data: Date of receipt at transmitting office e.g.: PCTUS2004005602-feei-000001-EN-20040808.zip
general-correspondence	crsp	general-correspondence	.pdf .doc .zip	Additional Biblio Data: Date of receipt at transmitting office e.g.: PCTUS2004005602-crsp-000001-EN-20040808.zip
Identity-and-entitlement-to-be-granted-	ideb	Combined declaration of identity-of-inventor under rule 4.17(i) and Declaration of entitlement-to-be-	.pdf .doc .zip	Additional Biblio Data: Date of receipt at transmitting office

patent		granted-patent under Rule 4.17(ii)		e.g.: PCTUS2004005602-ideb-000001-EN-20040808.zip
identity-of-inventor	idty	Declaration of identity-of-inventor under Rule 4.17(i)	.pdf .doc .zip	Additional Biblio Data: Date of receipt at transmitting office e.g.: PCTUS2004005602-idty-000001-EN-20050212.pdf
indication-bio-deposit	biod	Indications relating to the deposit of biological material.	.pdf .doc .zip	Additional Biblio Data: Date of receipt at transmitting office e.g.: PCTUS2004005602-biod-000001-EN-20050212.zip
inventorship	invp	Declaration of inventorship under Rule 4.17(iv)	.pdf .doc .zip	Additional Biblio Data: Date of receipt at transmitting office e.g.: PCTUS2004005602-invp-000001-EN-20050212.zip
ipea-forms	ipeaNN N	IPEA forms. Where general correspondence is machine generated the IPEA may use the form number to generate the type code e.g. for IPEA404 use ipea form 404. Note these codes must only be used for forms not listed elsewhere in this document such as the iprp.	.pdf .doc .zip	Additional Biblio Data: Date of mailing of the form e.g.: PCTUS2004005602-ipea203-000001-EN-20050212.zip
iper	iper	International Preliminary Examination Report (for IAs with an international filing date before 2004)	.pdf .doc .zip	Additional Biblio Data: IPEA Date of establishment (XXXXXXXX if unknown) e.g.: PCTUS2003000102-iper-000001-EN-US-20031205.zip
iprp2	iprp	International Preliminary Report on Patentability (chapter 2)	.pdf .doc	Additional Biblio Data: IPEA (e.g. EP)

			.zip	Date of completion (XXXXXXXX if unknown) e.g.: PCTUS2004000052-iprp- 000001-EN-US- 20041001.zip
isa-forms	isaNNN	ISA forms. Where general correspondence is machine generated the ISA may use the form number to generate the type code e.g for ISA form 203 use isa203. Note these codes must only be used for forms not listed elsewhere in this document such as the search report (isre).	.pdf .doc .zip	Additional Biblio Data: Date of mailing of the form e.g.: PCTUS2004005602- isa203-000001-EN- 20031205.zip
lack-of-novelty	Inov	declaration of lack of novelty under Rule 4.17(v)	.pdf .doc .zip	Additional Biblio Data: Date of receipt at transmitting office e.g.: PCTUS2004005602-Inov- 000001-EN-20031205.zip
Letter	Lett	Specific correspondence in the form of a letter	.pdf .doc .zip	Additional Biblio Data: Date of receipt at transmitting office e.g.: PCTUS2004005602-crsp- 000001-EN-20040808.zip
non-establishment -of – international-search-report	a17e	Non establishment of international search report from the ISA under Article 17.2(a)	.pdf .doc .zip	Additional Biblio Data: ISA (country code) Date of mailing of the Article 17.2a to the Applicant e.g.: PCTUS2004005602-a17e- 000001-EN-US- 20040810.zip
pdoc	pdoc	Priority document (including certification sheet)	.pdf .doc .zip	Additional Biblio Data: Country of the Priority Document Date of filing of the Priority Document

				(XXXXXXXX if unknown) Serial number of the Priority document (XXXXXX if unknown) if it contains “/” characters, replace by @, if it contains “\” characters replace by #, if it contains “-“ characters, replace by “^” Date of Receipt from applicant if under Rule 17.1(a) otherwise XXXXXXXX e.g.: PCTUS2004005602-pdoc-000001-EN-US-20040104-60@127,333-XXXXXXXX.zip
power-of-attorney	poat	Power of attorney document, including general power of attorney.	.pdf .doc .zip	Additional Biblio Data: Date of receipt at transmitting office e.g.: PCTUS2004005602-poat-000001-EN-20040131.pdf
record-copy	reco	Record copy (ST36 document)	.wad .wsp	Additional Biblio Data: Optional filing method for Paper and Easy scanned record copies (for E-Filings this entry should not be present) e.g.: PCTUS2004005602-reco-000001-EN.wsp (E-Filing) PCTUS2004005602-reco-000001-EN-EASYF.wad (Easy) PCTUS2004005602-reco-000001-EN-PAPER.wad (Paper filing)
record-copy-19.4	reco194	Record copy (ST36 document) being transmitted to RO IB as a 19.4 case.	.wad .wsp	Additional Biblio Data: Optional filing method for Paper and Easy scanned record copies (for E-Filings this entry should not be present)

				e.g.: PCTUS2004005602- reco194-000001-EN.wsp (E Filing) PCTUS2004005602- reco194-000001-EN- EASYF.wad (Easy) PCTUS2004005602- reco194-000001-EN- PAPER.wad (Paper filing)
rectified- sequence-list	rcql	Rectified versions of the sequence listing part of the application under Rule 91 (from the ISA)	.pdf .doc .zip	Additional Biblio Data: Date of receipt at transmitting office e.g.: PCTUS2004005602-rcql- 000001-EN-20050624.zip
rectified- sheets- abstract	rcab	Rectified sheets for the abstract under Rule 91 (from the ISA)	.pdf .doc .zip	Additional Biblio Data: Date of receipt at transmitting office e.g.: PCTUS2004005602-rcab- 000001-EN-20050624.zip
rectified- sheets-claims	rccl	Rectified sheets for the claims under Rule 91 (from the ISA)	.pdf .doc .zip	Additional Biblio Data: Date of receipt at transmitting office e.g.: PCTUS2004005602-rccl- 000001-EN-20050624.zip
rectified- sheets- description	rcde	Rectified sheets for the description under Rule 91 (from the ISA)	.pdf .doc .zip	Additional Biblio Data: Date of receipt at transmitting office e.g.: US2004005602-rcde- 000001-EN-20050624.zip
rectified- sheets- drawings	rcdr	Rectified sheets for the drawings under Rule 91 (from the ISA)	.pdf .doc .zip	Additional Biblio Data: Date of receipt at transmitting office e.g.: PCTUS2004005602-rcdr- 000001-EN-20050624.zip
rectified- sheets- request	rcqu	Rectified sheets for the request under Rule 91 (from the RO)	.pdf .doc	Additional Biblio Data: Date of receipt at

			.zip	transmitting office e.g.: PCTUS2004005602-rcqu-000001-EN-20050624.zip
rectified-sheets-other	rcot	Rectified sheets of indeterminate type under Rule 91 (from the RO or ISA)	.pdf .doc .zip	Additional Biblio Data: Date of receipt at transmitting office e.g.: PCTUS2004005602-rcot-000001-EN-20050624.zip
replacement sheets-abstract	rpab	Replacement sheets for the abstract under Rule 26 (from the RO)	.pdf .doc .zip	Additional Biblio Data: Date of receipt at transmitting office e.g.: PCTUS2004005602-rpab-000001-EN-20040120.zip
replacement sheets-claims	rpcl	Replacement sheets for the claims under Rule 26 (from the RO)	.pdf .doc .zip	Additional Biblio Data: Date of receipt at transmitting office e.g.: PCTUS2004005602-rpcl-000001-EN-20050624.zip
replacement sheets-description	rpde	Replacement sheets for the description under Rule 26 (from the RO)	.pdf .doc .zip	Additional Biblio Data: Date of receipt at transmitting office e.g.: PCTUS2004005602-rpde-000001-EN-20050624.zip
replacement sheets-drawings	rpdr	Replacement sheets for the drawings under Rule 26 (from the RO)	.pdf .doc .zip	Additional Biblio Data: Date of receipt at transmitting office e.g.: PCTUS2004005602-rpdr-000001-EN-20050624.zip

replacement sheets-other	rpot	Replacement sheets of indeterminate type under Rule 26 (from the RO)	.pdf .doc .zip	Additional Biblio Data: Date of receipt at transmitting office e.g.: PCTUS2004005602-rpot-000001-EN-20050624.zip
replacement sheets-request	rpqu	Replacement sheets for the request under Rule 26 (from the RO)	.pdf .doc .zip	Additional Biblio Data: Date of receipt at transmitting office e.g.: PCTUS2004005602-rpqu-000001-EN-20050624.zip
replacement-sequence-list	rpql	Replacement sequence listing part of the application under Rule 26 (from the RO)	.pdf .doc .zip	Additional Biblio Data: Date of receipt at transmitting office e.g.: PCTUS2004005602-rpql-000001-EN-20050624.zip
request	requ	RO 101 request form	.pdf .doc .zip	Additional Biblio Data: Date of receipt at transmitting office e.g.: PCTUS2004005602-requ-000001-EN-20050624.zip
ro forms	roNNN	RO Forms. Where general correspondence is machine generated the RO may use the form number to generate the type code e.g for RO form 106 use ro106. Note these codes must only be used for forms not listed elsewhere in this document such as the record copy.	.pdf .doc .zip	Additional Biblio Data: Date of mailing of the form e.g.: PCTUS2004005602-ro106-000001-EN-20050624.zip
Rule-92-bis-changes	r92b	Rule 92 bis changes	.pdf .doc .zip	Additional Biblio Data: Date of receipt at transmitting office e.g.: PCTUS2004005602-r92b-000001-EN-20050624.zip
search-report	isre	International search	.pdf	Additional Biblio Data:

		report	.doc .zip	ISA (country code) Date of mailing of the search report to the Applicant e.g.: PCTUS2004005602-isre-000001-EN-US-20040810.zip
security-statement	secu	Statement from RO indicating that the International Application is pending security clearance	pdf .doc .zip	Additional Biblio Data: None e.g.: PCTUS2004005602-secu-000001-en.zip
sequence-list	seql	Sequence listing part of the application	.pdf .doc .zip	Additional Biblio Data: Date of receipt at transmitting office e.g.: PCTUS2004005602-seql-000001-en-20040810.zip
sequence-list-information-sheet	seqi	Information sheet relating to the sequence listing part of the application.	.pdf .doc .zip	Additional Biblio Data: Date of receipt at transmitting office e.g.: PCTUS2004005602-seqi-000001-en-20040810.zip
translated-earlier-filed-application	teap	Copy of translation of earlier application (for incorporation by reference)	.pdf .doc .zip	Additional Biblio Data: Date of receipt at transmitting office e.g.: PCTUS2004005602-teap-000001-EN-20050531.zip
translated-national-phase-document	tnap	Document that has been translated into the national language for a national application	.pdf .doc .zip	Additional Biblio Data: none e.g.: PCTUS2004005602-tnap-000001-ES.zip
translated-priority-document	tpdc	Translated priority document (Rule 20.6)	.pdf .doc .zip	Additional Biblio Data: Country of the Priority Document Date of filing of the Priority Document (XXXXXXXX if unknown)

				<p>Serial number of the Priority document</p> <p>(XXXXXX if unknown) if it contains “/” characters, replace by @, if it contains “\” characters replace by #, if it contains “-“ characters, replace by “^”</p> <p>Date of Receipt from applicant if under Rule 17.1(a) otherwise XXXXXXXX</p> <p>e.g.:</p> <p>PCTUS2004005602-tpdc-000001-EN-US-20040104-60@127,333-XXXXXXXXX.zip</p>
withdrawal	wdra	Withdrawal of application under Rule 90bis, or withdrawal of priority claim, or withdrawal of designation, or withdrawal of election.	. pdf .doc .zip	<p>Additional Biblio Data:</p> <p>Date of receipt at transmitting office</p> <p>e.g.:</p> <p>PCTUS2004005602-wdra-000001-ES-20041008.zip</p>
wosa	wosa	Written Opinion by International Search Authority	.pdf .doc .zip	<p>Additional Biblio Data:</p> <p>ISA (country code)</p> <p>Date of mailing of the wosa to the Applicant</p> <p>Date of completion of WOSA</p> <p>e.g.:</p> <p>PCTUS2004005602-wosa-000001-EN-US-20041008-20041008.zip</p>
wosa-comment	wosc	Applicant’s comments on the written opinion. Normally expected from the Applicant.	.pdf .doc .zip	<p>Additional Biblio Data:</p> <p>Date of receipt at transmitting office</p> <p>e.g.:</p> <p>PCTUS2004005602-wosc-000001-EN-20041008.zip</p>
xml-recipept	xmre	XML receipt issued for transmission evidence	.xml	<p>Additional Biblio Data:</p> <p>Date of receipt at transmitting office</p> <p>e.g.:</p> <p>PCTUS2004005602-xmre-</p>

