



# PCT

## THE INTERNATIONAL PATENT SYSTEM >> PERFORMANCE INDICATORS

Quarterly Statistics Report

Oct. - Dec. **2013**

## FOREWORD

The aim of the performance indicators report is to provide users with the latest available statistics of PCT international applications and the performance of the PCT system. This report includes PCT applications statistics and a core set of indicators that provides statistical information about the various stages of the PCT international application process. All the data used in this document, along with longer time series, are available for download from the PCT statistics website:

[www.wipo.int/ipstats/en/statistics/pct](http://www.wipo.int/ipstats/en/statistics/pct)

Statistics reported in this document are based on:

- PCT international applications, which refer to patent applications filed under the Patent Cooperation Treaty (PCT). PCT filings and PCT applications are used interchangeably to refer to PCT international applications.
- The international phase of the PCT procedure (i.e. this does not include national/regional phase statistics).
- Counts are based on either the international filing date or the priority date or the publication date. The selection of the reference date depends on the indicator and what the indicator attempts to measure.
- Statistics for the most recent quarters (and recent year totals) are incomplete and provisional.
- This document reports statistics for most quarters (and recent year totals). Statistics from 2000 onwards are available for download from the PCT statistics web site.

### Useful links

PCT Statistics: PCT monthly, quarterly and yearly statistics - [www.wipo.int/ipstats/en/statistics/pct/](http://www.wipo.int/ipstats/en/statistics/pct/)

WIPO Industrial Property Statistics: Statistics on patents, utility models, PCT, trademarks, industrial designs, plant varieties and microorganisms - [www.wipo.int/ipstats/en/](http://www.wipo.int/ipstats/en/)

PATENTSCOPE®: WIPO's gateway to patent services and activities – [www.wipo.int/patentscope/en/](http://www.wipo.int/patentscope/en/)

PCT Resources - <http://www.wipo.int/pct/en/>

Contact: [ipstats.mail@wipo.int](mailto:ipstats.mail@wipo.int)

## TABLE OF CONTENTS

Methodological information

Trends in PCT filings

Trends in PCT filings by medium of filings

Timeliness of the receiving offices (RO) to transmit copies of PCT application to the international bureau: selected receiving offices

International searching authorities (ISA) selected by PCT applicants

International searching authorities (ISA) selected by PCT applicants, by country of origin

International search reports (ISR) established by international searching authorities (ISA)

Timeliness of international searching authorities (ISA) to transmit international search reports (ISR) to the international bureau

Demand for international preliminary examination (IPE) by international preliminary examining authorities (IPEA)

Supplementary international search (SIS) requests

Timeliness of international preliminary examining authorities (IPEA) to transmit international preliminary examination reports (IPER) to the international bureau

Publication and republication of PCT applications by the international bureau

Timeliness of international bureau to publish and republish PCT applications

## Methodological information

### The Patent Cooperation Treaty (PCT)

The Patent Cooperation Treaty (PCT) is an international treaty administered by the World Intellectual Property Organization (WIPO). The PCT makes it possible to seek patent protection for an invention simultaneously in a large number of countries by filing a single "international application" with a single patent office (i.e. receiving Office). The PCT system simplifies the process of multi-national patent filings by reducing the requirement to file multiple patent applications for multi-national patent rights. The PCT international applications do not result in issuance of "international patents" and the International Bureau (IB) does not grant patents. The decision on whether to confer patent rights remains in the hands of the national and/or regional patent offices, and the patent rights are limited to the jurisdiction of the patent granting authority.

The PCT procedure consists of an international phase and a national/regional phase. The PCT international application process starts with the international phase and concludes with the national/regional phase. The timeline for the PCT procedure is illustrated below<sup>1</sup>. In most cases, the applicant tends to file a patent application at the national patent office in the first instance (date of the first filing is commonly referred to as the priority date), followed by a PCT international application within 12 months from the priority date. Within sixteen months from the priority date, one of the International Searching Authorities (ISA) will conduct an international search and establish an International Search Report (ISR) along with the written opinion of the ISA. The purpose of the international search is to identify all the relevant prior art. The ISR lists all the relevant prior art documents considered to be relevant, the classification of the subject matter and an indication of the field searched. The ISA also establishes a preliminary and non-binding written opinion on the questions whether the invention appears to be novel, involves an inventive step and is industrially applicable. Both the ISR and the written opinion are transmitted to the applicant and the International Bureau.

The PCT international application, the ISR, and any amendments are published by the IB after the expiration of the eighteen months from the priority date. At this point the claimed invention is disclosed in the public domain.

The applicant has the option to request for international preliminary examination (IPE). The request for the IPE must be submitted within twenty-two months from the priority date. The main purpose of the IPE is to provide a preliminary non-binding opinion on the patentability (it is novel, involves an inventive step and has an industrial application) of the claimed invention. Within twenty-eight months from the priority date, one of the International Preliminary Examining Authorities (IPEA) will establish an international preliminary report of the patentability IPRP (Chapter II), which includes a statement on the patentability of the invention and the citation of the documents believed to support that statement.

If the applicant wishes to proceed to the national/regional phase, he must enter the national/regional phase within thirty months from the priority date. Once the application enters the national (regional) phase, it is subject to the formalities of the national (or regional) patent office. The application will be processed by the national (regional) patent office to decide whether to confer (or reject) patent rights for the claimed invention.

---

<sup>1</sup> It should be noted that the information and timeline relating to the PCT procedure outlined here are intended for statistical purposes. Only basic information (and terminology) about the PCT procedure is provided to aid readers to understand statistics reported in this document. For comprehensive details about the PCT procedure, please refer to PCT Resources on [www.wipo.int/pct/en](http://www.wipo.int/pct/en).

## PCT Terminology

**International Bureau (IB):** International Bureau of the World Intellectual Property Organization. In addition to its task as receiving Office for applicants from all Contracting States, it handles certain processing tasks in respect of all international applications filed with all receiving Offices worldwide.

**International filing date:** The date of receipt of the international application by the receiving Office.

**International Preliminary Examining Authority (IPEA):** National patent office (or intergovernmental organization) appointed by the PCT Assembly to carry out the international preliminary examination procedure. IPEA establishes the international preliminary report on patentability (Chapter II of the PCT).

**International Preliminary Report on Patentability (Chapter II of the PCT):** Preliminary, non-binding opinion established by the International Preliminary Examining Authority at the request of the applicant, on the questions whether the claimed invention appears to be novel, to involve an inventive step (to be non-obvious), and to be industrially applicable.

**International Searching Authority (ISA):** National patent office (or intergovernmental organization) appointed by the PCT Assembly to carry out international searches. It establishes International Search Reports (ISR) and the written opinion of the ISA.

**International Search Report (ISR):** Report established by the International Searching Authority containing citations of documents considered to be relevant, the classification of the subject matter of the invention and an indication of the fields searched.

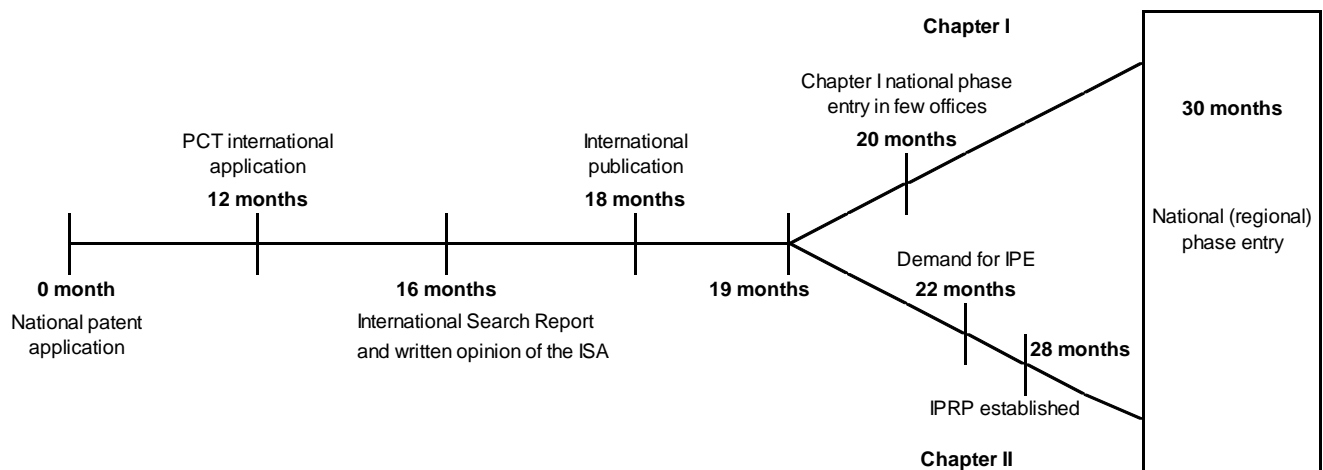
**Medium of filing:** Method used by the applicant to file PCT international application.

**Priority date:** The date of the first filing.

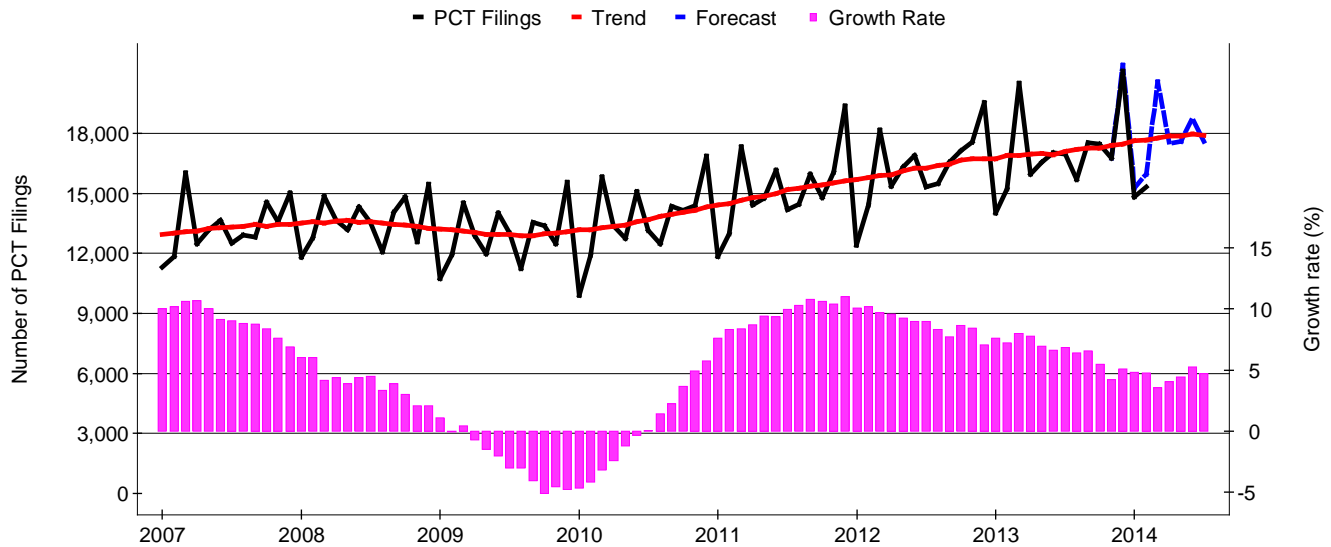
**Publication date:** The date on which the International Bureau (IB) publishes the international application.

**Receiving Office:** Patent office (national, regional, intergovernmental, or international organization) with which the international application is filed.

## PCT timeline



**Figure 1: Trends in PCT filings**



Source: WIPO Statistics Database, May 2014

Note: 2013 data are provisional and incomplete. The growth rate is the annualized growth rate based on the trend line. Counts are based on the international filing date.

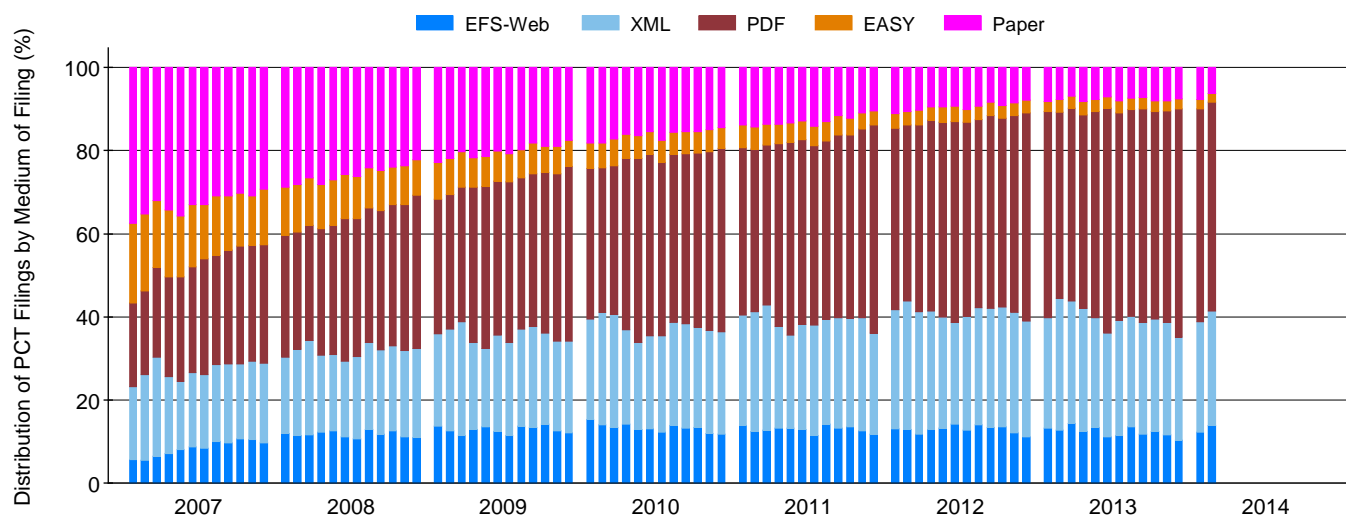
**Number of PCT Filings**

Year	Month												Total
	1	2	3	4	5	6	7	8	9	10	11	12	
2007	11,301	11,841	16,026	12,484	13,195	13,650	12,529	12,913	12,824	14,544	13,584	15,039	159,930
2008	11,828	12,794	14,877	13,648	13,192	14,311	13,571	12,089	14,056	14,813	12,583	15,479	163,241
2009	10,741	11,950	14,538	12,894	11,998	14,020	13,034	11,241	13,567	13,376	12,493	15,550	155,402
2010	9,898	11,923	15,843	13,384	12,763	15,091	13,165	12,492	14,349	14,175	14,379	16,878	164,340
2011	11,858	13,003	17,344	14,422	14,766	16,183	14,188	14,462	15,962	14,793	16,073	19,383	182,437
2012	12,433	14,416	18,172	15,378	16,347	16,913	15,324	15,502	16,571	17,125	17,580	19,564	195,325
2013	14,040	15,242	20,507	15,952	16,572	17,034	16,975	15,689	17,551	17,474	16,754	21,128	204,918
2014 (to date)	14,812	15,328	n.a.	n.a.	n.a.	n.a.	n.a.	n.a.	n.a.	n.a.	n.a.	n.a.	30,140

**Annualized Growth Rate of PCT Filings (based on trend line)**

Year	Month												Total
	1	2	3	4	5	6	7	8	9	10	11	12	
2007	10.0	10.2	10.6	10.7	10.0	9.2	9.0	8.8	8.8	8.4	7.6	6.9	6.9
2008	6.0	6.0	4.2	4.4	3.9	4.3	4.5	3.3	3.9	3.0	2.1	2.1	2.1
2009	1.1	-0.1	0.4	-0.7	-1.5	-2.1	-3.0	-3.1	-4.1	-5.1	-4.6	-4.8	-4.8
2010	-4.7	-4.2	-3.2	-2.4	-1.2	-0.4	0.1	1.4	2.2	3.7	4.9	5.8	5.8
2011	7.6	8.3	8.4	8.7	9.4	9.4	9.9	10.3	10.8	10.6	10.4	11.0	11.0
2012	10.0	10.2	9.7	9.6	9.2	9.0	9.0	8.3	7.7	8.6	8.5	7.1	7.1
2013	7.6	7.2	8.0	7.8	7.0	6.6	6.9	6.4	6.5	5.4	4.2	5.1	5.1
2014 (to date)	4.8	4.7	n.a.	n.a.	n.a.	n.a.	n.a.	n.a.	n.a.	n.a.	n.a.	n.a.	n.a.

Figure 2: Trends in PCT filings by medium of filing



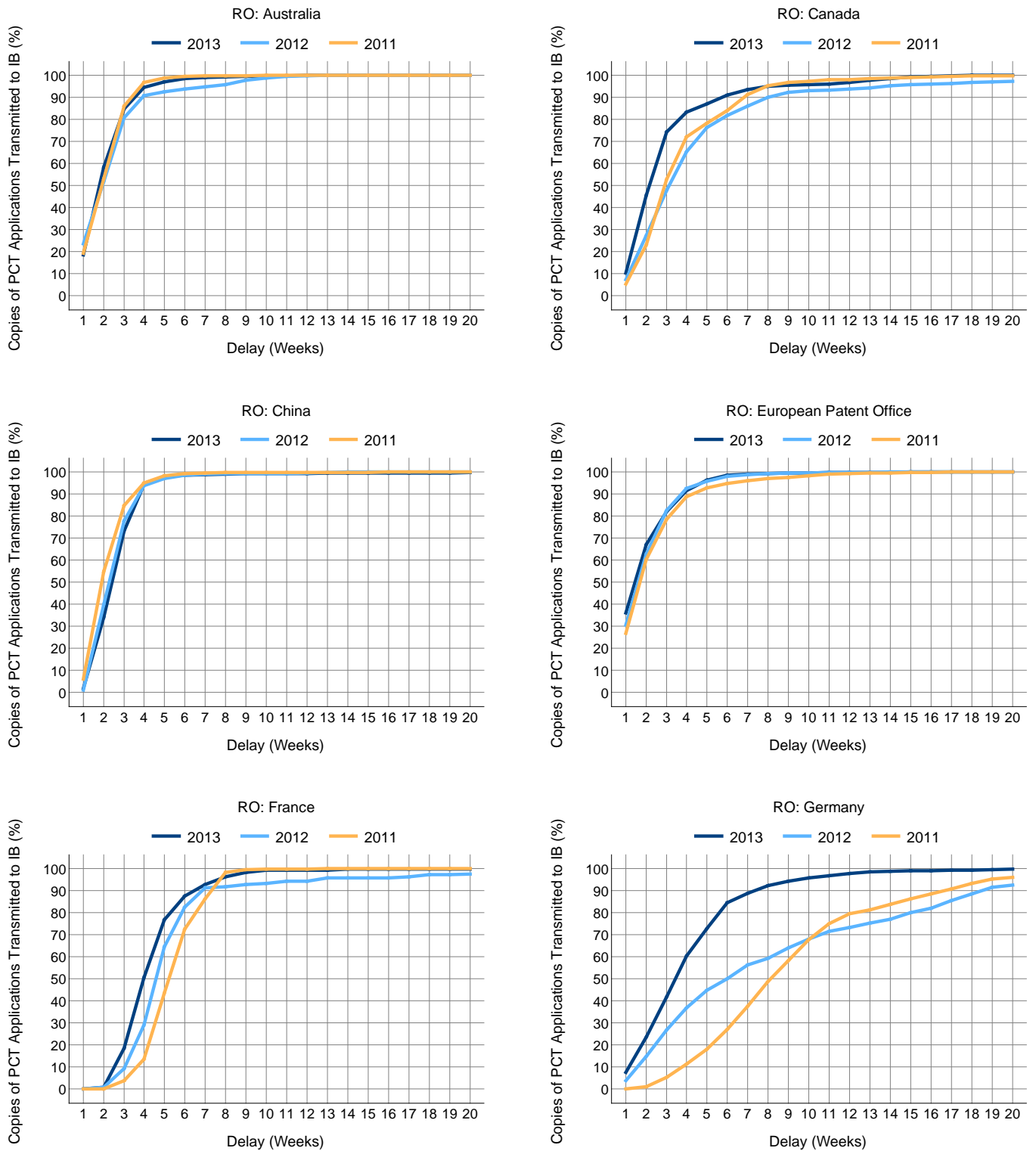
Source: WIPO Statistics Database, May 2014

Note: 2013 data are provisional and incomplete. Counts are based on the international filing date. EASY (Electronic Application System) and EFS-Web (Electronic Filing System).

		Number of PCT Filings by Medium of Filing						Share of PCT filings by Medium of Filing (%)				
Year	Month	Total	Paper	EASY	PDF	XML	EFS-Web	Paper	EASY	PDF	XML	EFS-Web
2010	-	164,340	26,517	9,105	67,045	39,935	21,738	16.1	5.5	40.8	24.3	13.2
2011	-	182,437	23,211	8,206	79,807	47,615	23,598	12.7	4.5	43.7	26.1	12.9
2012	-	195,325	18,299	6,478	90,341	55,056	25,151	9.4	3.3	46.3	28.2	12.9
2013	-	204,918	15,620	5,677	102,231	56,063	25,327	7.6	2.8	49.9	27.4	12.4
2014	to date	30,140	2,090	666	15,278	8,156	3,950	6.9	2.2	50.7	27.1	13.1

Year	Month	Total	Paper	EASY	PDF	XML	EFS-Web	Paper	EASY	PDF	XML	EFS-Web
2011	5	14,766	1,962	688	6,846	3,307	1,963	13.3	4.7	46.4	22.4	13.3
2011	6	16,183	2,079	728	7,206	4,069	2,101	12.8	4.5	44.5	25.1	13.0
2011	7	14,188	2,010	649	6,122	3,770	1,637	14.2	4.6	43.1	26.6	11.5
2011	8	14,462	1,877	681	6,199	3,643	2,062	13.0	4.7	42.9	25.2	14.3
2011	9	15,962	1,848	734	7,016	4,252	2,112	11.6	4.6	44.0	26.6	13.2
2011	10	14,793	1,818	584	6,530	3,851	2,010	12.3	3.9	44.1	26.0	13.6
2011	11	16,073	1,752	622	7,303	4,362	2,034	10.9	3.9	45.4	27.1	12.7
2011	12	19,383	2,033	638	9,704	4,717	2,291	10.5	3.3	50.1	24.3	11.8
2012	1	12,433	1,379	438	5,434	3,561	1,621	11.1	3.5	43.7	28.6	13.0
2012	2	14,416	1,524	477	6,090	4,468	1,857	10.6	3.3	42.2	31.0	12.9
2012	3	18,172	1,859	657	8,162	5,348	2,146	10.2	3.6	44.9	29.4	11.8
2012	4	15,378	1,450	505	7,062	4,368	1,993	9.4	3.3	45.9	28.4	13.0
2012	5	16,347	1,557	606	7,662	4,367	2,155	9.5	3.7	46.9	26.7	13.2
2012	6	16,913	1,578	615	8,166	4,162	2,392	9.3	3.6	48.3	24.6	14.1
2012	7	15,324	1,540	474	7,161	4,184	1,965	10.0	3.1	46.7	27.3	12.8
2012	8	15,502	1,451	496	7,001	4,374	2,180	9.4	3.2	45.2	28.2	14.1
2012	9	16,571	1,374	548	7,678	4,741	2,230	8.3	3.3	46.3	28.6	13.5
2012	10	17,125	1,565	531	7,772	4,946	2,311	9.1	3.1	45.4	28.9	13.5
2012	11	17,580	1,488	540	8,340	5,082	2,130	8.5	3.1	47.4	28.9	12.1
2012	12	19,564	1,534	591	9,813	5,455	2,171	7.8	3.0	50.2	27.9	11.1
2013	1	14,040	1,144	353	6,961	3,718	1,864	8.1	2.5	49.6	26.5	13.3
2013	2	15,242	1,178	464	6,818	4,826	1,956	7.7	3.0	44.7	31.7	12.8
2013	3	20,507	1,408	606	9,500	6,028	2,965	6.9	3.0	46.3	29.4	14.5
2013	4	15,952	1,315	504	7,413	4,733	1,987	8.2	3.2	46.5	29.7	12.5
2013	5	16,572	1,275	494	8,206	4,367	2,230	7.7	3.0	49.5	26.4	13.5
2013	6	17,034	1,190	470	9,228	4,241	1,905	7.0	2.8	54.2	24.9	11.2
2013	7	16,975	1,364	491	8,468	4,705	1,947	8.0	2.9	49.9	27.7	11.5
2013	8	15,689	1,160	435	7,786	4,187	2,121	7.4	2.8	49.6	26.7	13.5
2013	9	17,551	1,254	486	9,012	4,741	2,058	7.1	2.8	51.3	27.0	11.7
2013	10	17,474	1,401	463	8,710	4,736	2,164	8.0	2.6	49.8	27.1	12.4
2013	11	16,754	1,336	405	8,526	4,542	1,945	8.0	2.4	50.9	27.1	11.6
2013	12	21,128	1,595	506	11,603	5,239	2,185	7.5	2.4	54.9	24.8	10.3
2014	1	14,812	1,135	333	7,598	3,936	1,810	7.7	2.2	51.3	26.6	12.2
2014	2	15,328	955	333	7,680	4,220	2,140	6.2	2.2	50.1	27.5	14.0

**Figure 3: Timeliness of receiving offices (RO) to transmit copies of PCT application to the international bureau: selected receiving offices**

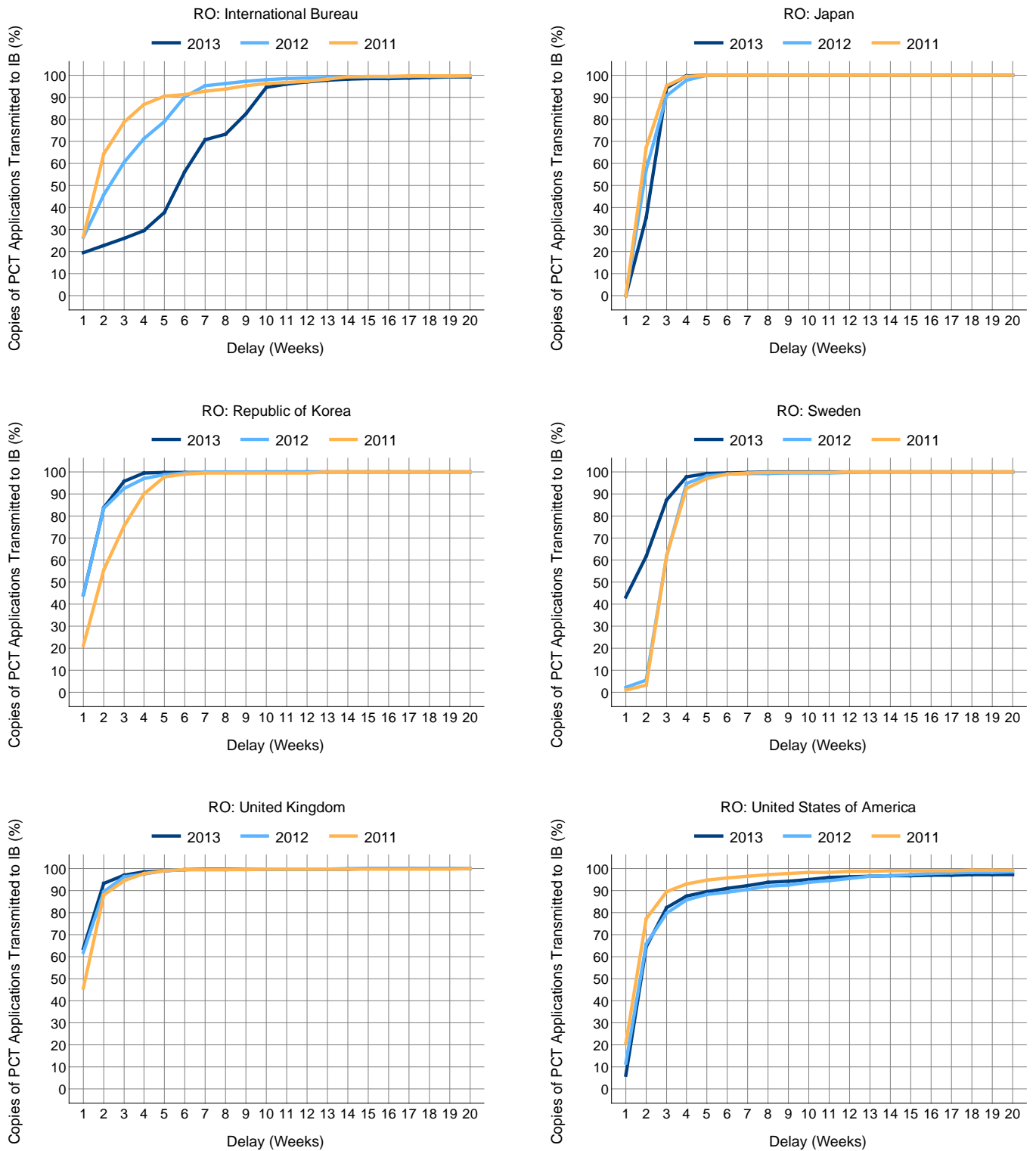


Source: WIPO Statistics Database, May 2014

Note: 2013 data are provisional and incomplete. This indicator shows the timeliness of the RO to transmit copies of PCT application to the International Bureau (IB). Delay is calculated as the time difference between the international filing date and the date on which the IB received a copy of the PCT application from the RO.



**Figure 3: Timeliness of receiving offices (RO) to transmit copies of PCT application to the international bureau: selected receiving offices**



Source: WIPO Statistics Database, May 2014

Note: 2013 data are provisional and incomplete. This indicator shows the timeliness of the RO to transmit copies of PCT application to the International Bureau (IB). Delay is calculated as the time difference between the international filing date and the date on which the IB received a copy of the PCT application from the RO.

**Timeliness of receiving offices (RO) to transmit copies of PCT application to the international bureau**

RO_Name / Delay in week(s)	2010	2011	2012	2013	2010	2010	2010	2011	2011	2011	2011	2012	2012	2012	2012	2012	2013	2013	2013	2013
Year / Quarter	-	-	-	to date	2	3	4	1	2	3	4	1	2	3	4	1	2	3	4	
Australia	1 week	226	323	385	282	68	44	27	54	87	121	61	100	107	46	132	91	86	81	24
	2 weeks	495	560	464	603	157	134	117	111	115	177	157	71	128	122	143	96	139	211	157
	3 weeks	651	550	474	403	151	220	172	111	154	144	141	123	121	119	111	83	106	87	127
	4 weeks	301	177	160	147	49	41	131	71	78	8	20	74	22	43	21	40	30	21	56
	5 weeks	82	35	29	40	20	7	22	19	10	3	3	4	8	14	3	12	9	8	11
	6 weeks	14	13	21	22	1	2	1	5	5	1	2	2	2	19	6	6	3	7	
	7 weeks	8	4	16	8	1	1	1	1	1	2	1	1	3	12	1	3	4		
	8 weeks	4		17	5	1		2							17		3		1	1
	> 8 Weeks	6	4	71	11	2	2	2	2		1	1	1	3	65	2	4	5	1	1
	Total	1,787	1,666	1,637	1,521	449	451	475	374	449	457	386	376	392	457	412	335	382	416	388
	Canada	1 week	82	111	162	222	25	11	14	22	40	19	30	24	29	59	50	65	52	42
2 weeks		375	368	450	755	93	51	90	81	97	114	76	66	93	150	141	196	139	187	233
3 weeks		757	617	457	617	186	198	155	147	202	156	112	125	93	119	120	126	220	127	144
4 weeks		433	394	390	189	99	127	124	115	113	92	74	104	109	68	109	64	74	27	24
5 weeks		94	133	246	81	17	38	24	47	28	28	30	59	75	50	62	27	19	23	12
6 weeks		80	118	119	87	17	25	37	25	30	33	30	32	43	29	15	31	18	24	14
7 weeks		108	147	94	52	16	33	59	37	35	45	30	26	42	18	8	19	12	12	9
8 weeks		59	87	94	34	4	32	23	24	24	15	24	27	45	15	7	11	12	7	4
> 8 Weeks		26	98	222	107	3	8	14	24	17	22	35	90	65	26	41	33	49	16	9
Total		2,014	2,073	2,234	2,144	460	523	540	522	586	524	441	553	594	534	553	572	595	465	512
China		1 week	955	1,052	232	427	209	148	212	257	240	360	195	53	107	33	39	52	67	277
	2 weeks	5,843	8,418	7,517	7,197	1,444	1,590	1,546	1,454	2,304	2,386	2,274	1,589	2,274	1,917	1,737	1,350	1,243	2,917	1,687
	3 weeks	3,374	5,169	7,328	8,745	959	1,243	820	884	1,432	1,102	1,751	1,353	1,810	1,818	2,347	2,129	1,712	2,438	2,466
	4 weeks	1,629	1,759	3,123	4,703	337	574	433	313	538	452	456	628	446	854	1,195	974	1,180	1,193	1,356
	5 weeks	636	572	626	778	111	167	246	226	124	123	99	170	193	140	123	174	286	123	195
	6 weeks	213	186	282	172	32	26	107	153	14	7	12	61	83	92	46	4	163	3	2
	7 weeks	63	42	109	54	11	15	30	35	2	2	3	14	34	55	6	1	32	19	2
	8 weeks	17	14	25	51	3	4	6	8	4	1	1	2	5	18	4	21	26		
	> 8 Weeks	217	70	171	224	8	35	33	26	4	13	27	104	1	55	11	47	16	70	91
	Total	12,947	17,282	19,413	22,351	3,114	3,802	3,433	3,356	4,662	4,446	4,818	3,974	4,953	4,982	5,504	4,735	4,720	7,066	5,830
	European Patent Office	1 week	4,196	8,370	9,854	11,437	709	1,574	1,281	1,494	1,875	2,277	2,724	1,964	2,014	2,777	3,099	2,579	2,202	3,705
2 weeks		8,327	10,364	10,428	9,825	2,101	1,984	2,209	2,409	2,430	2,504	3,021	2,329	2,652	2,564	2,883	2,179	2,400	2,536	2,710
3 weeks		6,846	5,715	6,432	4,777	1,638	2,013	1,603	1,241	1,472	1,327	1,675	1,474	1,801	1,514	1,643	1,183	1,438	1,206	950
4 weeks		4,579	3,194	3,187	3,014	1,084	985	1,321	1,490	754	528	422	1,099	942	704	442	876	1,109	506	523
5 weeks		2,268	1,252	1,112	1,511	594	489	662	621	260	183	188	442	243	263	164	994	370	67	80
6 weeks		920	612	677	724	223	206	189	295	89	112	116	374	126	128	49	452	195	41	36
7 weeks		496	374	281	171	100	121	71	153	56	105	60	89	75	85	32	55	65	23	28
8 weeks		191	333	110	72	45	56	36	60	23	223	27	39	30	30	11	24	11	20	17
> 8 Weeks		707	941	289	257	312	177	75	96	46	341	458	83	88	63	55	68	58	78	53
Total		28,530	31,155	32,370	31,788	6,806	7,605	7,447	7,859	7,005	7,600	8,691	7,893	7,971	8,128	8,378	8,410	7,848	8,182	7,348
France		1 week	15	2	3	1	3	2	1	2						2	1			
	2 weeks	1	3	25	31		1		1				2		25				21	10
	3 weeks	47	133	279	591	29	17				14	119	3	29	169	78	59	189	134	209
	4 weeks	177	354	644	1,072	72	46	5	3	191	22	138	26	145	156	317	251	255	226	340
	5 weeks	364	1,087	1,162	875	63	81	58	145	419	213	310	273	428	205	256	195	282	171	227
	6 weeks	574	1,057	590	361	34	164	191	249	291	279	238	267	154	96	73	149	77	81	54
	7 weeks	1,094	498	283	173	104	174	388	217	99	145	37	214	35	14	20	96	24	32	21
	8 weeks	693	431	17	122	221	192	146	264	60	97	10	11		2	4	53	5	41	23
	> 8 Weeks	453	66	274	127	111	238	87	52	8	3	3	54	15	126	79	52	17	31	27
	Total	3,418	3,631	3,277	3,353	637	915	876	933	1,068	773	857	848	808	794	827	855	849	737	912
	Germany	1 week	3	1	71	103	1	1	2	5	1			3	2	23	43	35	20	31
2 weeks		4	14	204	216	1	1	2	5	1		8	25	33	68	78	72	61	57	26
3 weeks		20	61	224	250	2	10	5	11	42	2	6	19	46	74	85	59	64	68	59
4 weeks		64	86	182	251	18	9	16	3	74	4	5	17	52	50	63	40	45	75	91
5 weeks		217	94	150	170	64	82	43	30	49	8	7	14	82	28	26	29	35	49	57
6 weeks		375	127	98	159	94	139	69	82	29	13	3	20	48	16	14	27	17	41	74
7 weeks		487	150	114	59	135	158	131	98	13	33	6	27	38	37	12	8	7	22	22
8 weeks		291	158	59	47	80	52	94	80	27	32	19	19	16	24		3	5	13	26
> 8 Weeks		324	725	754	105	44	23	79	67	176	244	238	382	279	72	21	36	10	25	34
Total		1,785	1,416	1,856	1,360	439	474	439	376	412	336	292	526	596	392	342	309	264	381	406

Source: WIPO Statistics Database, May 2014

Note: 2013 data are provisional and incomplete. This indicator shows the timeliness of the RO to transmit copies of PCT application to the International Bureau (IB). Delay is calculated as the time difference between the international filing date and the date on which the IB received a copy of the PCT application from the RO.

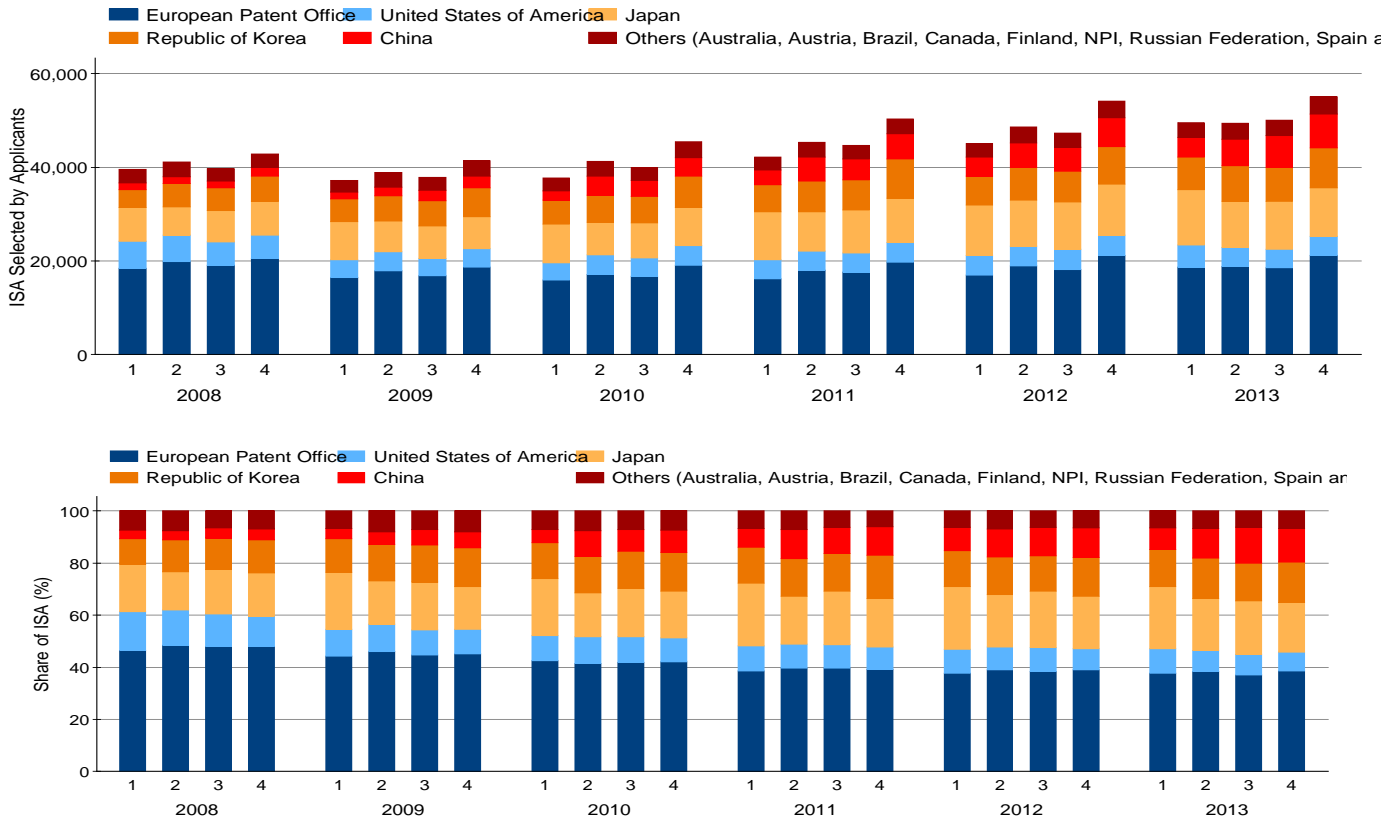
**Timeliness of receiving offices (RO) to transmit copies of PCT application to the international bureau**

RO_Name / Delay in week(s)		2010	2011	2012	2013	2010	2010	2010	2011	2011	2011	2011	2011	2012	2012	2012	2012	2013	2013	2013	2013
Year / Quarter		-	-	-	to date	2	3	4	1	2	3	4	1	2	3	4	1	2	3	4	
International Bureau	1 week	4,939	2,346	2,485	1,968	1,308	958	1,304	733	563	501	549	893	447	479	666	385	390	464	729	
	2 weeks	2,208	3,302	1,790	335	553	844	506	780	884	454	1,184	877	545	106	262	19	37	29	250	
	3 weeks	442	1,273	1,382	327	50	150	102	145	452	492	184	65	984	200	133	47	57	30	193	
	4 weeks	221	696	989	363	61	57	53	258	25	385	28	398	69	129	393	130	57	97	79	
	5 weeks	120	329	723	811	31	27	23	246	20	30	33	76	33	179	435	437	222	79	73	
	6 weeks	98	80	1,061	1,875	29	29	23	30	15	10	25	28	19	391	623	524	1,010	295	46	
	7 weeks	96	117	454	1,449	18	20	27	32	43	15	27	50	14	228	162	463	736	227	23	
	8 weeks	88	100	116	265	18	17	17	24	36	17	23	20	10	27	59	51	71	111	32	
	> 8 Weeks	198	546	345	2,702	62	58	25	55	118	115	258	53	38	101	153	308	219	885	1,290	
	Total	8,410	8,789	9,345	10,095	2,130	2,160	2,080	2,303	2,156	2,019	2,311	2,460	2,159	1,840	2,886	2,364	2,799	2,217	2,715	
Japan	1 week	1	1		1	2,695	4,795	5,333	6,311	5,942	6,605	6,366	6,789	5,636	5,825	6,381	5,437	5,342	2,966	1,243	
	2 weeks	16,244	25,224	24,631	14,988	4,652	2,240	1,994	3,261	2,753	2,091	2,440	2,771	3,181	4,050	4,426	4,771	4,683	6,931	8,506	
	3 weeks	12,213	10,545	14,428	24,891	971	274	343	473	535	299	293	855	1,635	276	255	1,077	1,014	98	102	
	4 weeks	2,092	1,600	3,021	2,291	49	2	64	72	64	3	4	714	211	3	15	68	24	6	4	
	5 weeks	137	143	943	102	3	2	2	1	2	1	1	2	19	1	3	2	2	2	4	
	6 weeks	11	5	25	10	3	2														
	7 weeks	6	5	7	3	3	2														
	8 weeks																				
	> 8 Weeks	5	13	13	5		1	1	6			6	1	3	3	7			3	2	
	Total	30,709	37,539	43,078	42,295	8,373	7,316	7,737	10,127	9,300	9,006	9,106	11,138	10,689	10,169	11,082	11,355	11,072	10,008	9,860	
Republic of Korea	1 week	191	2,304	5,181	5,505	81	42	6	121	9	953	1,221	657	1,710	1,588	1,226	649	881	1,520	2,455	
	2 weeks	1,753	3,684	4,593	4,905	602	520	116	395	569	1,236	1,484	1,067	916	734	1,876	1,638	1,531	1,229	507	
	3 weeks	4,541	2,167	1,074	1,481	874	1,427	1,069	383	1,500	176	108	405	134	229	306	480	358	450	193	
	4 weeks	2,335	1,563	518	469	460	442	1,082	789	600	65	109	315	84	45	74	109	138	90	132	
	5 weeks	230	832	207	47	91	76	17	710	73	20	29	130	10	6	61	12	17	8	10	
	6 weeks	35	118	99	4	7	7	13	104	4	8	2	27	1	1	70	3				
	7 weeks	110	60	48	2	2	1	102	58	2					2	39	1				
	8 weeks	53	9	5				53	8				1	2							
	> 8 Weeks	40	58	2	24	37	1	1	52	4	2									24	
	Total	9,288	10,795	11,727	12,437	2,154	2,516	2,459	2,620	2,761	2,460	2,954	2,612	2,855	2,605	3,655	2,892	2,949	3,298	3,298	
Sweden	1 week	30	23	42	830	4	2	15	6	7	6	4	12	10	12	8	3	225	258	344	
	2 weeks	124	38	52	353	15	6	8	8	18	5	7	8	14	10	20	3	155	77	118	
	3 weeks	896	1,098	959	487	226	197	301	275	296	254	273	233	246	210	270	232	165	37	53	
	4 weeks	513	572	564	198	152	143	121	145	151	129	147	159	128	108	169	131	48	11	8	
	5 weeks	80	86	60	28	24	19	15	26	27	19	14	19	8	16	17	13	7	5	3	
	6 weeks	31	36	13	8	17	6	5	8	3	19	6	5	3		5	2	5	1		
	7 weeks	7	7	2	3	4	3				4	1	1	1		2	1	2			
	8 weeks	1	4	2	3																
	> 8 Weeks	10	8	14	3	3	3	3	3	3	1	1	3	4	4	3	3	2	1		
	Total	1,692	1,872	1,708	1,913	445	379	469	475	506	436	455	441	413	359	495	388	609	390	526	
United Kingdom	1 week	843	1,905	2,617	2,492	228	175	215	490	402	582	431	581	614	748	674	678	531	619	664	
	2 weeks	2,673	1,757	1,160	1,156	774	612	683	421	511	364	461	260	379	239	282	186	430	253	287	
	3 weeks	558	270	276	146	111	167	97	99	71	64	36	170	41	32	33	89	22	17	18	
	4 weeks	199	135	60	60	47	45	50	54	39	26	16	23	12	13	10	14	26	10		
	5 weeks	76	51	59	22	12	22	17	26	12	8	5	48	7	4		8	2	10	2	
	6 weeks	24	19	19	14	1	4	14	6	4	4	5	9	4	4	2	3	3	5	3	
	7 weeks	12	3	4	7	3	4	3	2	1						1	1	2	1	2	
	8 weeks	6	4	4	2																
	> 8 Weeks	22	19	19	15	2	6	13	4	5	7	3	7	6	4	2	5	5	2	3	
	Total	4,413	4,163	4,218	3,914	1,178	1,040	1,093	1,103	1,047	1,056	957	1,103	1,063	1,045	1,007	983	1,008	934	989	
United States of America	1 week	8,066	9,842	6,307	3,548	1,930	2,630	1,954	2,001	2,802	3,561	1,478	1,714	1,848	1,962	783	665	663	1,594	626	
	2 weeks	25,761	26,602	28,703	32,769	7,782	5,689	7,105	5,617	7,113	6,383	7,489	5,037	6,207	8,153	9,306	6,779	8,283	8,688	9,019	
	3 weeks	6,801	5,876	7,488	10,069	1,429	1,410	1,605	1,964	1,191	975	1,746	2,651	803	1,609	2,425	2,960	2,976	1,729	2,404	
	4 weeks	1,865	1,586	3,217	2,840	300	478	403	672	329	298	287	1,997	205	617	398	1,118	889	449	384	
	5 weeks	614	833	1,311	1,253	82	81	126	305	304	130	94	556	174	433	148	285	411	307	250	
	6 weeks	440	447	505	800	35	97	140	155	163	82	47	170	113	184	38	72	431	127	170	
	7 weeks	247	421	664	663	28	81	59	103	86	89	143	82	130	380	72	101	223	203	136	
	8 weeks	259	324	818	866	119	41	50	130	105	23	66	47	316	202	253	286	146	394	40	
	> 8 Weeks	1,293	1,334	4,257	3,558	257	264	285	424	183	410	317	712	1,184	1,928	433	934	1,154	753	717	
	Total	45,346	47,265	53,270	56,366	11,962	10,771	11,727	11,371	12,276	11,951	11,667	12,966	10,980	15,468	13,856	13,200	15,176	14,244	13,746	

Source: WIPO Statistics Database, May 2014

Note: 2013 data are provisional and incomplete. This indicator shows the timeliness of the RO to transmit copies of PCT application to the International Bureau (IB). Delay is calculated as the time difference between the international filing date and the date on which the IB received a copy of the PCT application from the RO.

**Figure 4: International searching authorities (ISA) selected by PCT applicants**



Source: WIPO Statistics Database, May 2014

Note: 2013 data are provisional and incomplete. NPI (Nordic Patent Institute).

**International search authorities (ISAs) selected by PCT applicants, by country of origin**

**ISA: Australia**

Origin_Name / Year / Quarter	2010	2011	2012	2013 to date	2010	2010	2010	2011	2011	2011	2011	2012	2012	2012	2012	2013	2013	2013	2013
	-	-	-	to date	2	3	4	1	2	3	4	1	2	3	4	1	2	3	4
<b>Total</b>	<b>3,423</b>	<b>3,141</b>	<b>2,835</b>	<b>2,697</b>	<b>878</b>	<b>924</b>	<b>960</b>	<b>719</b>	<b>861</b>	<b>801</b>	<b>760</b>	<b>668</b>	<b>788</b>	<b>672</b>	<b>707</b>	<b>628</b>	<b>669</b>	<b>689</b>	<b>711</b>
Australia	1,702	1,633	1,543	1,473	442	435	459	360	437	416	420	325	428	384	406	320	366	393	394
Singapore	400	380	386	443	98	90	94	112	80	94	94	89	97	96	104	91	111	126	115
United States of America	457	390	316	274	129	145	133	110	99	96	85	83	102	62	69	98	60	43	73
New Zealand	270	283	254	256	66	62	82	52	69	87	75	52	66	62	74	51	58	72	75
Malaysia	172	193	115	65	44	61	49	11	119	35	28	49	31	25	10	24	17	10	14
India	173	84	65	40	33	65	58	29	16	21	18	27	14	9	15	13	11	11	5
Republic of Korea	77	38	23	34	15	22	38	14	7	10	7	4	7	7	5	3	11	6	14
South Africa	67	68	39	27	17	19	17	15	12	20	21	13	9	8	9	10	6	8	3
China	11	12	13	18	3	4	3	3	2	5	2	4	6	3		4	4	4	6
Japan	5	9	18	13	1	3	1	1		3	5	9	3	3	3	5	4	3	1
Others	89	51	63	54	30	18	26	12	20	14	5	13	25	13	12	9	21	13	11

**ISA: Austria**

Origin_Name / Year / Quarter	2010	2011	2012	2013 to date	2010	2010	2010	2011	2011	2011	2011	2012	2012	2012	2012	2013	2013	2013	2013
	-	-	-	to date	2	3	4	1	2	3	4	1	2	3	4	1	2	3	4
<b>Total</b>	<b>409</b>	<b>251</b>	<b>178</b>	<b>233</b>	<b>89</b>	<b>101</b>	<b>77</b>	<b>65</b>	<b>61</b>	<b>68</b>	<b>57</b>	<b>41</b>	<b>50</b>	<b>34</b>	<b>53</b>	<b>49</b>	<b>61</b>	<b>60</b>	<b>63</b>
South Africa	60	82	91	120	15	13	12	17	22	18	25	21	25	16	29	23	26	31	40
India	100	61	17	25	25	14	16	23	14	17	7	4	4	4	5	5	8	7	5
United Arab Emirates	9	8	10	25	3		6			4	4	1	4	2	3	4	7	8	6
Singapore	21	20	25	21	1	9	5	5	4	5	6	3	8	6	8	5	5	5	6
Republic of Korea	139	39	18	19	28	42	25	14	10	11	4	6	3	3	6	3	6	9	1
Others	80	41	17	23	17	23	13	6	11	13	11	6	6	3	2	9	9		5

Source: WIPO Statistics Database, May 2014

Note: 2013 data are provisional and incomplete.

## International search authorities (ISAs) selected by PCT applicants, by country of origin

### ISA: Brazil

Origin_Name / Year / Quarter	2010	2011	2012	2013	2010	2010	2010	2011	2011	2011	2011	2011	2012	2012	2012	2012	2013	2013	2013	2013
	-	-	-	to date	2	3	4	1	2	3	4	1	2	3	4	1	2	3	4	
<b>Total</b>	<b>310</b>	<b>435</b>	<b>429</b>	<b>508</b>	<b>76</b>	<b>79</b>	<b>80</b>	<b>83</b>	<b>93</b>	<b>135</b>	<b>124</b>	<b>77</b>	<b>97</b>	<b>117</b>	<b>138</b>	<b>86</b>	<b>106</b>	<b>124</b>	<b>192</b>	
Brazil	307	432	425	496	74	78	80	82	92	134	124	77	96	116	136	85	105	121	185	
Others	3	3	4	12	2	1		1	1	1			1	1	2	1	1	3	7	

### ISA: Canada

Origin_Name / Year / Quarter	2010	2011	2012	2013	2010	2010	2010	2011	2011	2011	2011	2012	2012	2012	2012	2013	2013	2013	2013
	-	-	-	to date	2	3	4	1	2	3	4	1	2	3	4	1	2	3	4
<b>Total</b>	<b>2,208</b>	<b>2,396</b>	<b>2,339</b>	<b>2,323</b>	<b>559</b>	<b>564</b>	<b>573</b>	<b>588</b>	<b>643</b>	<b>585</b>	<b>580</b>	<b>576</b>	<b>596</b>	<b>550</b>	<b>617</b>	<b>627</b>	<b>604</b>	<b>508</b>	<b>584</b>
Canada	2,094	2,295	2,180	2,220	533	539	541	560	623	554	558	521	559	507	593	597	578	487	558
United States of America	35	26	80	68	5	10	12	5	4	12	5	29	22	21	8	22	16	16	14
Switzerland	12	13	19	15	3	1	3	5	4	2	2	6	6	4	3	3	4		8
Others	2,141	2,334	2,279	2,303	541	550	556	570	631	568	565	556	587	532	604	622	598	503	580

### ISA: China

Origin_Name / Year / Quarter	2010	2011	2012	2013	2010	2010	2010	2011	2011	2011	2011	2012	2012	2012	2012	2013	2013	2013	2013
	-	-	-	to date	2	3	4	1	2	3	4	1	2	3	4	1	2	3	4
<b>Total</b>	<b>13,273</b>	<b>18,017</b>	<b>20,720</b>	<b>23,702</b>	<b>4,041</b>	<b>3,343</b>	<b>3,920</b>	<b>3,062</b>	<b>5,037</b>	<b>4,494</b>	<b>5,424</b>	<b>4,060</b>	<b>5,250</b>	<b>5,157</b>	<b>6,253</b>	<b>4,148</b>	<b>5,615</b>	<b>6,830</b>	<b>7,109</b>
China	12,111	16,197	18,268	21,107	3,732	3,067	3,564	2,701	4,629	4,042	4,825	3,516	4,616	4,576	5,560	3,468	4,994	6,181	6,464
United States of America	295	496	899	1,051	81	69	98	84	113	116	183	148	228	215	308	282	236	252	281
India	219	225	285	317	57	65	67	67	56	56	46	60	86	74	65	105	77	80	55
Japan	96	214	224	198	28	26	17	37	61	54	62	73	54	53	44	55	58	54	31
Germany	51	227	201	185	11	10	25	39	63	65	60	52	54	49	46	52	34	54	45
Sweden	73	99	150	162	20	11	22	22	18	14	45	35	36	37	42	34	42	40	46
Netherlands	52	106	103	161	11	10	29	14	9	27	56	15	22	22	44	24	43	38	56
Finland	136	117	192	159	39	23	33	20	27	33	37	50	61	35	46	27	49	52	31
Switzerland	43	72	83	106	10	14	13	17	11	23	21	15	23	22	23	31	29	21	25
Others	197	264	315	256	52	48	52	61	50	64	89	96	70	74	75	70	53	58	75

### ISA: European Patent Office

Origin_Name / Year / Quarter	2010	2011	2012	2013	2010	2010	2010	2011	2011	2011	2011	2012	2012	2012	2012	2013	2013	2013	2013
	-	-	-	to date	2	3	4	1	2	3	4	1	2	3	4	1	2	3	4
<b>Total</b>	<b>68,940</b>	<b>71,639</b>	<b>75,146</b>	<b>77,274</b>	<b>17,108</b>	<b>16,733</b>	<b>19,114</b>	<b>16,237</b>	<b>18,005</b>	<b>17,683</b>	<b>19,714</b>	<b>16,999</b>	<b>18,902</b>	<b>18,120</b>	<b>21,125</b>	<b>18,730</b>	<b>18,872</b>	<b>18,515</b>	<b>21,157</b>
United States of America	16,963	17,644	18,621	20,818	4,391	4,087	4,587	3,922	4,538	4,380	4,804	4,011	4,642	4,616	5,352	5,030	4,951	5,062	5,775
Germany	17,426	18,525	18,433	17,637	3,938	4,672	4,762	4,101	4,514	4,904	5,006	4,413	4,570	4,750	4,700	4,375	4,215	4,488	4,559
France	7,054	7,223	7,569	7,707	1,771	1,648	2,133	1,667	1,838	1,644	2,074	1,631	1,933	1,629	2,376	1,715	1,865	1,771	2,356
United Kingdom	4,739	4,646	4,734	4,679	1,228	1,118	1,169	1,170	1,122	1,158	1,196	1,139	1,188	1,176	1,231	1,171	1,163	1,157	1,188
Switzerland	3,437	3,669	3,921	4,114	854	840	990	741	941	922	1,065	886	936	972	1,127	972	987	1,022	1,133
Netherlands	3,856	3,302	3,844	3,901	1,078	920	1,009	746	795	710	1,051	848	918	832	1,246	948	979	904	1,070
Italy	2,649	2,688	2,853	2,865	679	621	732	614	731	635	708	631	772	626	824	669	740	633	823
Sweden	1,730	1,857	2,090	2,352	383	356	581	403	548	420	486	482	558	477	573	547	640	444	721
Japan	1,222	1,487	1,858	1,596	278	260	331	365	335	393	394	481	423	439	515	440	382	385	389
Austria	1,127	1,325	1,296	1,254	304	270	317	344	291	357	333	286	358	322	330	294	319	299	342
Denmark	1,018	1,086	1,211	1,094	256	199	313	253	268	248	317	245	316	286	364	246	270	241	337
Belgium	1,036	1,176	1,210	1,093	287	222	292	281	299	263	333	250	338	282	340	258	280	265	290
Finland	713	698	904	1,004	191	152	192	166	211	136	185	240	252	173	239	308	299	194	203
Turkey	477	536	534	800	113	101	174	95	153	84	204	95	109	89	241	160	194	179	267
Spain	608	611	628	674	159	127	175	131	164	154	162	154	182	129	163	180	173	145	176
India	613	710	690	628	142	146	178	198	145	189	178	203	141	158	188	188	154	143	143
Norway	388	441	448	480	104	68	113	109	116	103	113	100	125	110	113	127	114	110	129
Israel	744	760	523	443	172	177	197	224	180	153	203	172	145	107	99	138	109	92	104
Ireland	410	383	359	402	109	94	108	93	92	108	90	64	99	90	106	98	98	94	112
Others	2,730	2,872	3,420	3,733	671	655	761	614	724	722	812	668	897	857	998	866	940	887	1,040

### ISA: Finland

Origin_Name / Year / Quarter	2010	2011	2012	2013	2010	2010	2010	2011	2011	2011	2011	2012	2012	2012	2012	2013	2013	2013	2013
	-	-	-	to date	2	3	4	1	2	3	4	1	2	3	4	1	2	3	4
<b>Total</b>	<b>921</b>	<b>928</b>	<b>977</b>	<b>795</b>	<b>264</b>	<b>157</b>	<b>289</b>	<b>224</b>	<b>265</b>	<b>178</b>	<b>261</b>	<b>246</b>	<b>269</b>	<b>189</b>	<b>273</b>	<b>230</b>	<b>248</b>	<b>152</b>	<b>165</b>
Finland	903	914	968	792	260	152	285	220	262	177	255	243	266	187	272	230	246	151	165
Others	18	14	9	3	4	5	4	4	3	1	6	3	3	2	1		2	1	

### ISA: Japan

Origin_Name / Year / Quarter	2010	2011	2012	2013	2010	2010	2010	2011	2011	2011	2011	2012	2012	2012	2012	2013	2013	2013	2013
	-	-	-	to date	2	3	4	1	2	3	4	1	2	3	4	1	2	3	4
<b>Total</b>	<b>30,856</b>	<b>37,094</b>	<b>41,677</b>	<b>42,271</b>	<b>6,957</b>	<b>7,448</b>	<b>8,203</b>	<b>10,206</b>	<b>8,345</b>	<b>9,157</b>	<b>9,386</b>	<b>10,808</b>	<b>9,785</b>	<b>10,196</b>	<b>10,888</b>	<b>11,805</b>	<b>9,774</b>	<b>10,244</b>	<b>10,448</b>
Japan	30,597	36,931	41,382	41,884	6,922	7,363	8,119	10,167	8,309	9,113	9,342	10,763	9,723	10,114	10,782	11,729	9,702	10,130	10,323
United States of America	91	44	160	136	15	22	32	6	6	20	12	24	37	41	58	56	22	26	32
Singapore	6	7	18	58	1		2		1		6	4	4	4	6	8	8	19	23
Luxembourg				56														32	24
Sweden	40	13	41	45	8	11	11	4	2	4	3	4	7	6	24	3	11	10	21
Malaysia	</																		

## International search authorities (ISAs) selected by PCT applicants, by country of origin

### ISA: Nordic Patent Institute

Origin_Name / Year / Quarter	2010	2011	2012	2013	2010	2010	2010	2011	2011	2011	2011	2011	2012	2012	2012	2012	2013	2013	2013	2013
	-	-	-	to date	2	3	4	1	2	3	4	1	2	3	4	1	2	3	4	
Total	299	275	278	223	82	60	86	84	75	53	63	75	82	54	67	33	74	54	62	
Norway	189	118	132	115	52	39	48	43	22	25	28	40	35	23	34	15	31	35	34	
Denmark	97	134	128	101	28	19	34	34	44	25	31	28	45	28	27	16	41	18	26	
Sweden				4													2	1	1	
Others	13	23	18	3	2	2	4	7	9	3	4	7	2	3	6	2			1	

### ISA: Republic of Korea

Origin_Name / Year / Quarter	2010	2011	2012	2013	2010	2010	2010	2011	2011	2011	2011	2011	2012	2012	2012	2012	2013	2013	2013	2013
	-	-	-	to date	2	3	4	1	2	3	4	1	2	3	4	1	2	3	4	
Total	23,305	27,174	27,561	30,487	5,798	5,691	6,698	5,787	6,596	6,452	8,339	6,167	6,952	6,476	7,966	7,040	7,651	7,282	8,514	
United States of America	12,997	15,941	14,850	17,091	3,383	3,099	3,517	3,325	3,787	3,806	5,023	3,551	3,971	3,538	3,790	4,102	4,292	4,094	4,603	
Republic of Korea	9,342	10,225	11,732	12,310	2,202	2,372	2,824	2,224	2,538	2,413	3,050	2,411	2,751	2,719	3,851	2,626	3,087	2,959	3,638	
Canada	149	218	225	276	38	46	52	43	75	44	56	51	50	49	75	77	63	55	81	
Singapore	66	98	114	126	19	17	21	24	28	18	28	13	18	27	56	28	36	23	39	
Netherlands	121	72	85	85	17	22	41	26	22	18	6	14	26	12	33	18	23	20	24	
Sweden	64	60	67	79	19	15	29	4	11	14	31	11	14	23	19	28	15	17	19	
Australia	21	68	94	73	1	13	4	15	11	19	23	26	25	12	31	17	21	17	18	
Germany	23	37	47	67	5	5	8	11	9	9	8	15	11	13	8	29	11	13	14	
Malaysia	146	42	72	54	19	18	86	14	12	8	8	13	14	23	22	29	11	9	5	
Japan	103	51	42	50	26	22	27	16	3	12	20	11	13	5	13	17	13	13	7	
Others	273	362	233	276	69	62	89	85	100	91	86	51	59	55	68	69	79	62	66	

### ISA: Russian Federation

Origin_Name / Year / Quarter	2010	2011	2012	2013	2010	2010	2010	2011	2011	2011	2011	2011	2012	2012	2012	2012	2013	2013	2013	2013
	-	-	-	to date	2	3	4	1	2	3	4	1	2	3	4	1	2	3	4	
Total	936	1,181	2,679	3,735	247	228	296	244	291	300	346	456	703	729	791	898	833	965	1,039	
United States of America	4	22	1,377	2,366			2	3	2	8	9	198	369	406	404	589	498	581	698	
Russian Federation	744	915	975	969	194	171	240	196	233	219	267	202	249	229	295	241	249	260	219	
Ukraine	77	114	94	128	25	23	20	20	27	31	36	28	25	16	25	26	26	44	32	
Canada	10	10	54	60	4	1	5	1	4	2	3	1	20	27	6	7	11	20	22	
Hungary	18	30	32	37	7	5	4	6	5	13	6	4	10	5	13	4	10	10	13	
Bulgaria	5	10	10	19	2	3			3	3	4	3	2	3	2	3	9	5	2	
China			2	19											2		3	10	3	
Kazakhstan	18	22	11	18	4	6	2	5	5	5	7	1	1	2	7	5	2	4	7	
Others	60	58	124	119	11	19	23	13	12	19	14	19	27	39	39	20	25	31	43	

### ISA: Spain

Origin_Name / Year / Quarter	2010	2011	2012	2013	2010	2010	2010	2011	2011	2011	2011	2011	2012	2012	2012	2012	2013	2013	2013	2013
	-	-	-	to date	2	3	4	1	2	3	4	1	2	3	4	1	2	3	4	
Total	1,453	1,445	1,401	1,411	376	334	402	354	404	312	375	326	395	307	373	300	316	353	442	
Spain	1,154	1,106	1,066	1,013	319	246	305	272	325	235	274	252	319	225	270	233	239	249	292	
Mexico	168	169	150	205	31	48	60	36	46	36	51	39	33	32	46	35	41	43	86	
Chile	61	88	73	101	9	22	18	26	13	26	23	14	15	24	20	18	16	30	37	
Colombia	30	39	58	57	6	9	10	10	10	7	12	12	12	15	19	5	12	19	21	
Peru	7	6	10	9	4	1	1	4			2		1	5	4	2	2	5		
Others	33	37	44	26	7	8	8	6	10	8	13	9	15	6	14	7	6	7	6	

### ISA: Sweden

Origin_Name / Year / Quarter	2010	2011	2012	2013	2010	2010	2010	2011	2011	2011	2011	2011	2012	2012	2012	2012	2013	2013	2013	2013
	-	-	-	to date	2	3	4	1	2	3	4	1	2	3	4	1	2	3	4	
Total	2,074	1,942	1,577	1,522	576	410	592	484	560	357	541	380	414	309	474	357	467	271	427	
Sweden	1,383	1,399	1,210	1,272	383	248	412	348	417	225	409	286	302	236	386	284	378	236	374	
Finland	375	317	218	107	117	67	97	84	77	76	80	52	61	49	56	30	43	11	23	
Norway	126	131	82	100	23	32	41	35	32	36	28	24	26	11	21	35	27	17	21	
United States of America	17	19	24	20	4	7	4	4	11	1	3	7	8	5	4	1	11	3	5	
Denmark	22	13	5	8	5	6	5	2	5	3	3		1	1	3	2	2	2	2	
Malta	2		1	3																
Others	149	63	37	12	44	50	33	11	18	16	18	10	16	7	4	2	6	2	2	

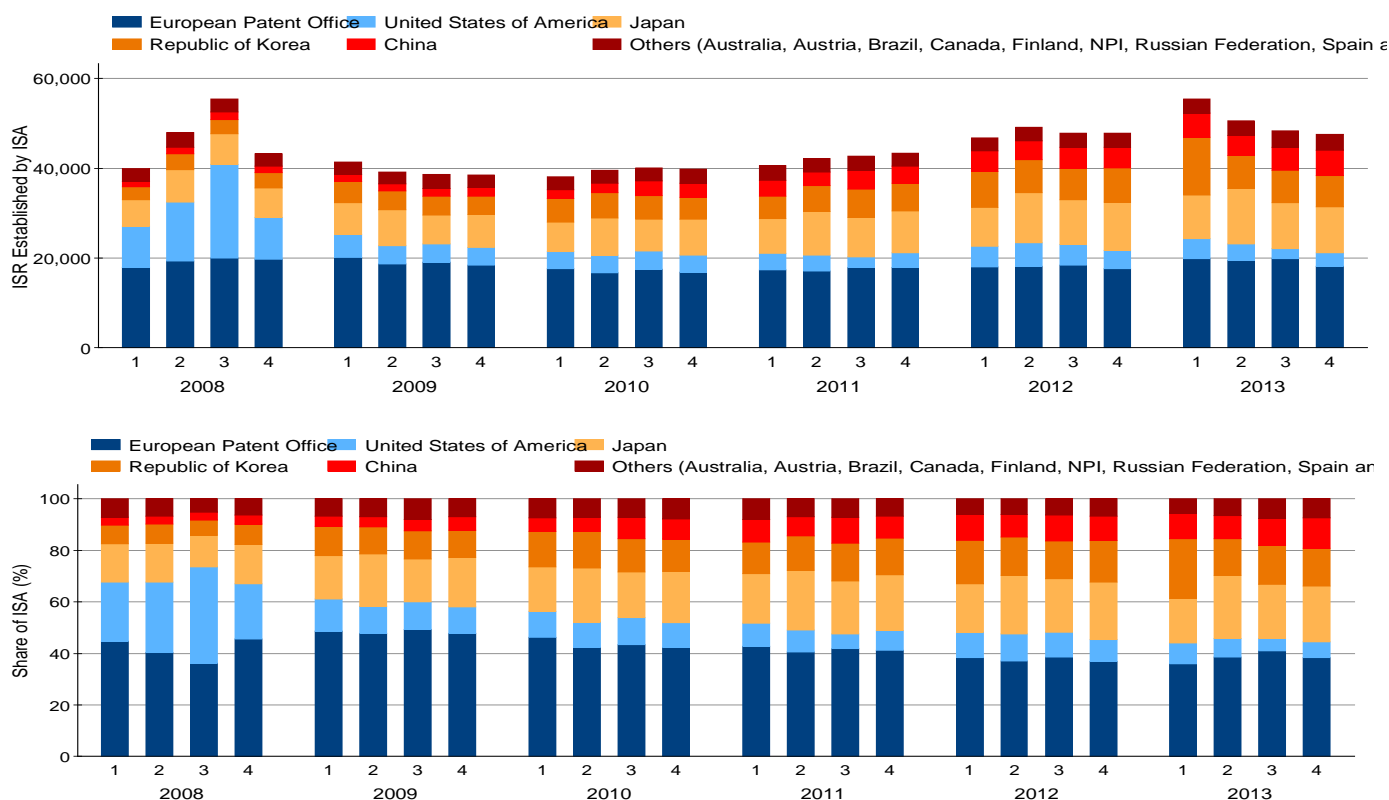
### ISA: United States of America

Origin_Name / Year / Quarter	2010	2011	2012	2013	2010	2010	2010	2011	2011	2011	2011	2011	2012	2012	2012	2012	2013	2013	2013	2013
	-	-	-	to date	2	3	4	1	2	3	4	1	2	3	4	1	2	3	4	
Total	15,904	16,478	17,104	16,624	4,184	3,926	4,134	4,056	4,126	4,028	4,268	4,128	4,289	4,320	4,367	4,629	4,032	3,934	4,029	
United States of America	14,143	14,492	15,252	15,086	3,737	3,532	3,655	3,598	3,686	3,474	3,734	3,608	3,843	3,861	3,940	4,195	3,693	3,582	3,616	
Israel	712	661	495	328	166	171	209	181	146	160	174	182	141	102	70	100	88	70	70	
India	152	222	249	204	41	29	26	39	41	90	52	44	64	84	57	45	51	58	50	
Japan	124	208	163	158	32	30	30	45	52	54	57	59	34	42	28	56	30	36	36	
Canada	149	131	123	109	49	29	38	37	32	36	26	26	22	28	47	48	25	18	18	
France	55	57	72	90	13	10	18	12	13	15	17	5	13	17	37	17	13	25	35	
China	52	56	66	81	11	14	11	11	15	11	19	13	11	20	22	30	18	15	18	
Switzerland	133	160	112	76	28	32	43	26	35	49	50	39	29	23	21	20	14	15	27	
United Kingdom	43	69	81	68	16	7	8	21	9	18	21	21	19	28	13	21	11	12	24	
Others	341	422	491	424	91	72	96	86	97	121	118	131	113	115	132	97	89	103	135	

Source: WIPO Statistics Database, May 2014

Note: 2013 data are provisional and incomplete.

**Figure 5: International search reports (ISR) established by international searching authorities (ISA)**



Source: WIPO Statistics Database, May 2014

Note: 2013 data are provisional and incomplete. Counts are based on the transmittal date of the International Search Report to the International Bureau. NPI (Nordic Patent Institute).

**International search reports (ISR) established by international searching authorities (ISA)**

Number of ISR established by ISA		2010	2011	2012	2013	2010	2010	2010	2011	2011	2011	2011	2012	2012	2012	2012	2013	2013	2013	2013
Origin_Name / Year / Quarter	-	-	-	to date	to date	2	3	4	1	2	3	4	1	2	3	4	1	2	3	4
<b>Total</b>	157,546	168,736	191,502	201,928	39,569	40,119	39,777	40,603	42,113	42,659	43,361	46,803	49,111	47,757	47,831	55,468	50,574	48,364	47,522	
Australia	3,126	3,270	2,883	2,580	682	814	918	942	732	812	784	761	723	736	663	605	620	703	652	
Austria	1,038	597	391	269	260	257	283	207	171	142	77	105	69	96	121	61	66	73	69	
Brazil	260	356	424	464	46	96	71	81	89	90	96	141	88	78	117	124	116	125	99	
Canada	2,037	2,436	2,196	2,508	457	516	507	681	561	647	547	535	602	628	431	710	520	750	528	
China	10,615	14,599	18,220	20,698	2,107	3,353	3,175	3,524	3,081	4,255	3,739	4,633	4,299	4,824	4,464	5,405	4,518	5,120	5,655	
Egypt			1	6									1				1	4	1	
European Patent Office	68,695	70,182	72,231	77,432	16,769	17,442	16,844	17,328	17,108	17,856	17,890	17,969	18,201	18,402	17,659	19,893	19,463	19,846	18,230	
Finland	749	1,003	873	940	222	147	191	285	280	214	224	202	213	191	267	228	292	228	192	
Israel			160	737									42	118	130	186	204	217		
Japan	29,989	35,641	40,531	42,383	8,331	7,081	7,972	7,761	9,707	8,811	9,362	8,767	11,151	9,923	10,690	9,642	12,318	10,195	10,228	
Nordic Patent Institute	283	284	266	222	83	73	56	83	82	68	51	71	70	82	43	65	46	52	59	
Republic of Korea	20,964	23,159	29,904	34,371	5,630	5,171	4,900	5,033	5,675	6,266	6,185	7,925	7,357	6,898	7,724	12,848	7,283	7,233	7,007	
Russian Federation	851	1,008	1,919	3,087	171	223	253	217	251	247	293	235	399	526	759	588	771	827	901	
Spain	1,392	1,290	1,478	1,255	385	312	345	216	313	402	359	359	427	312	380	290	302	309	354	
Sweden	1,993	1,950	1,554	1,543	575	465	480	551	476	440	483	502	362	355	335	381	353	406	403	
United States of America	15,554	12,961	18,471	13,433	3,851	4,169	3,782	3,694	3,587	2,409	3,271	4,598	5,150	4,663	4,060	4,498	3,719	2,289	2,927	

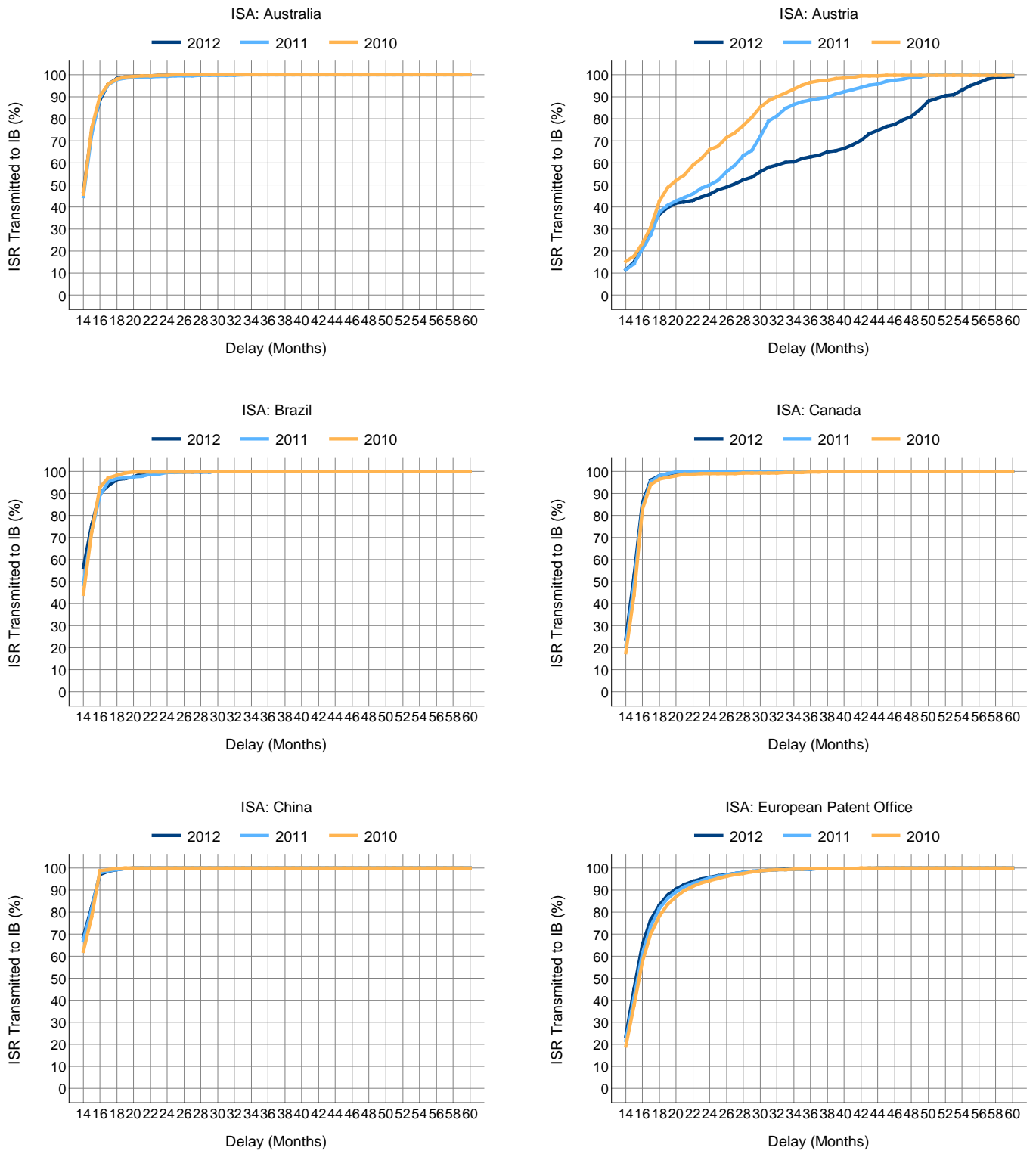
  

Distribution of ISR established by ISA (%)		2010	2011	2012	2013	2010	2010	2010	2011	2011	2011	2011	2012	2012	2012	2012	2013	2013	2013	2013
Origin_Name / Year / Quarter	-	-	-	to date	to date	2	3	4	1	2	3	4	1	2	3	4	1	2	3	4
Australia	2.0	1.9	1.5	1.3	1.7	2.0	2.3	2.3	1.7	1.9	1.8	1.6	1.5	1.5	1.4	1.1	1.2	1.5	1.4	
Austria	0.7	0.4	0.2	0.1	0.7	0.6	0.7	0.5	0.4	0.3	0.2	0.2	0.1	0.2	0.3	0.1	0.1	0.2	0.1	
Brazil	0.2	0.2	0.2	0.2	0.1	0.2	0.2	0.2	0.2	0.2	0.2	0.3	0.2	0.2	0.2	0.2	0.2	0.3	0.2	
Canada	1.3	1.4	1.1	1.2	1.2	1.3	1.3	1.7	1.3	1.5	1.3	1.1	1.2	1.3	0.9	1.3	1.0	1.6	1.1	
China	6.7	8.7	9.5	10.3	5.3	8.4	8.0	8.7	7.3	10.0	8.6	9.9	8.8	10.1	9.3	9.7	8.9	10.6	11.9	
Egypt			0.0	0.0													0.0	0.0	0.0	
European Patent Office	43.6	41.6	37.7	38.3	42.4	43.5	42.3	42.7	40.6	41.9	41.3	38.4	37.1	38.5	36.9	35.9	38.5	41.0	38.4	
Finland	0.5	0.6	0.5	0.5	0.6	0.4	0.5	0.7	0.7	0.5	0.5	0.4	0.4	0.4	0.6	0.4	0.6	0.5	0.4	
Israel			0.1	0.4											0.1	0.2	0.2	0.4	0.5	
Japan	19.0	21.1	21.2	21.0	21.1	17.7	20.0	19.1	23.0	20.7	21.6	18.7	22.7	20.8	22.3	17.4	24.4	21.1	21.5	
Nordic Patent Institute	0.2	0.2	0.1	0.1	0.2	0.2	0.1	0.2	0.2	0.2	0.1	0.2	0.1	0.2	0.1	0.1	0.1	0.1	0.1	
Republic of Korea	13.3	13.7	15.6	17.0	14.2	12.9	12.3	12.4	13.5	14.7	14.3	16.9	15.0	14.4	16.1	23.2	14.4	15.0	14.7	
Russian Federation	0.5	0.6	1.0	1.5	0.4	0.6	0.6	0.5	0.6	0.6	0.7	0.5	0.8	1.1	1.6	1.1	1.5	1.7	1.9	
Spain	0.9	0.8	0.8	0.6	1.0	0.8	0.9	0.5	0.7	0.9	0.8	0.8	0.8	0.7	0.8	0.5	0.6	0.6	0.7	
Sweden	1.3	1.2	0.8	0.8	1.5	1.2	1.2	1.4	1.1	1.0	1.1	1.1	0.7	0.7	0.7	0.7	0.7	0.8	0.8	
United States of America	9.9	7.7	9.6	6.7	9.7	10.4	9.5	9.1	8.5	5.6	7.5	9.8	10.5	9.8	8.5	8.1	7.4	4.7	6.2	

Source: WIPO Statistics Database, May 2014

Note: 2013 data are provisional and incomplete. Counts are based on the transmittal date of the International Search Report to the International Bureau. NPI (Nordic Patent Institute).

**Figure 6: Timeliness of international searching authorities (ISAs) to transmit international search reports (ISRs) to the international bureau**

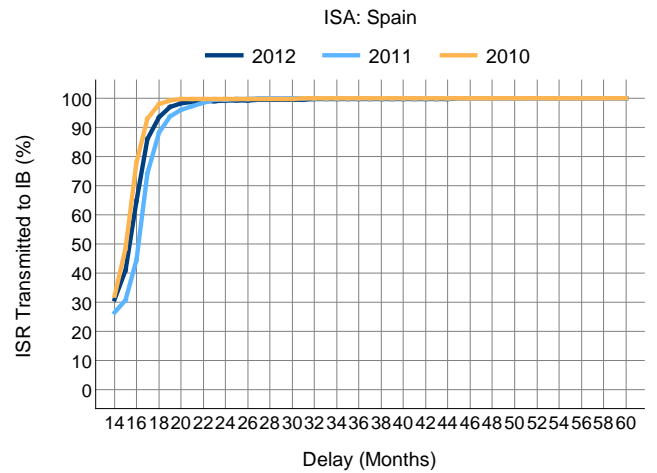
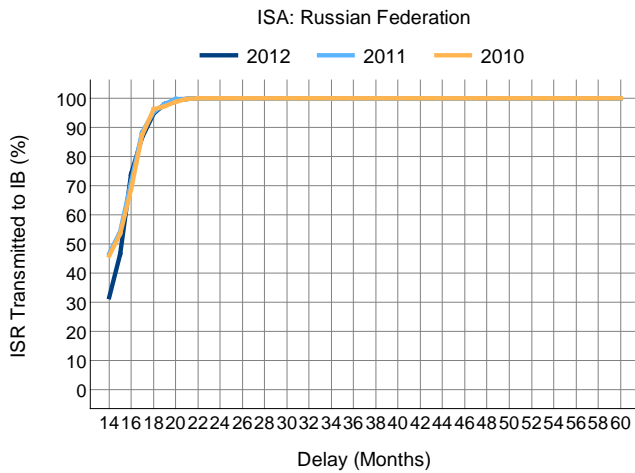
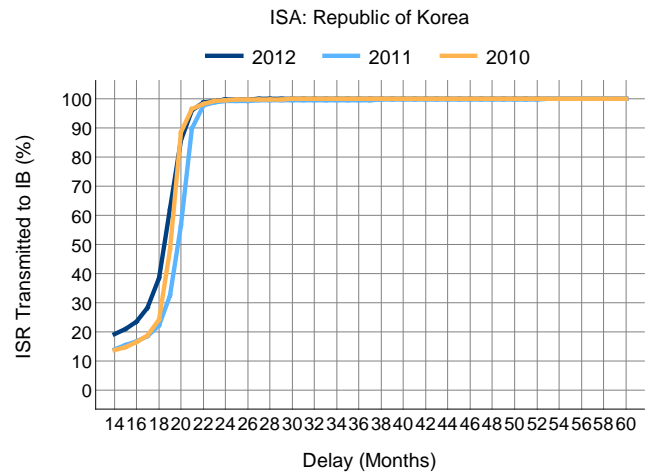
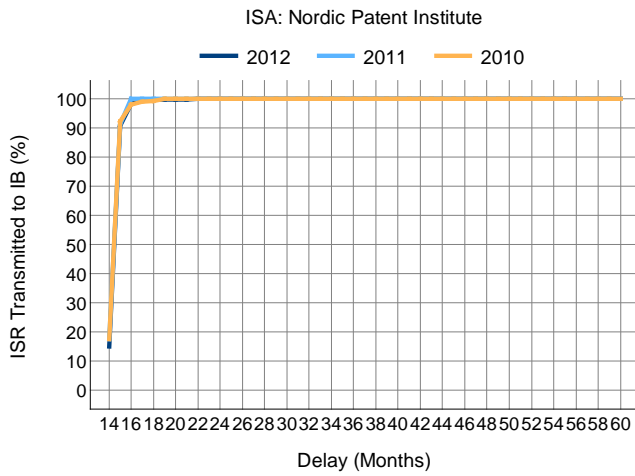
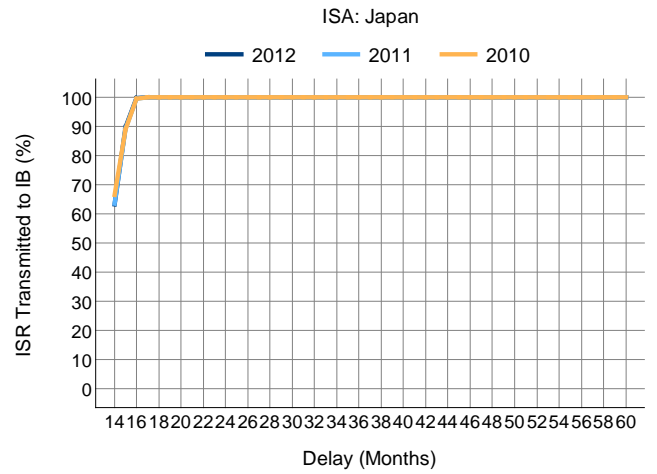
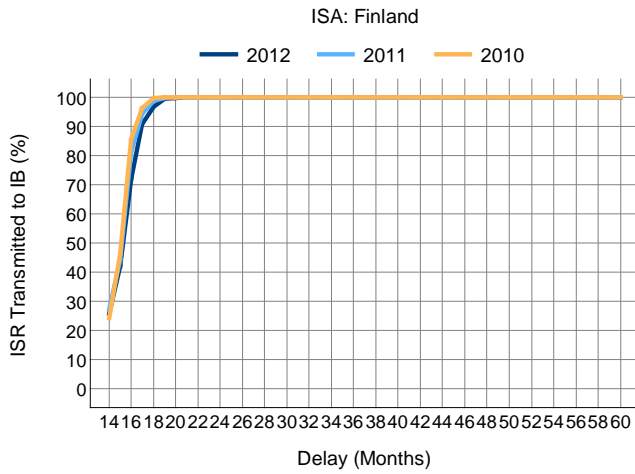


Source: WIPO Statistics Database, May 2014

Note: 2013 data are provisional and incomplete. Delay is calculated as the time difference between the priority date and the date on which the ISA transmits the ISR to the International Bureau.



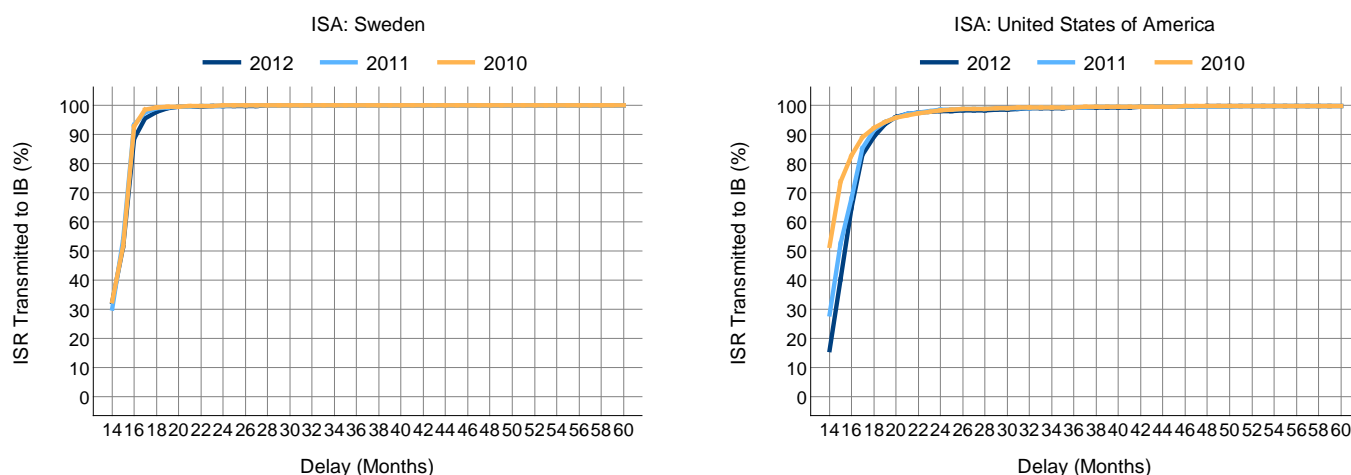
**Figure 6: Timeliness of international searching authorities (ISAs) to transmit international search reports (ISRs) to the international bureau**



Source: WIPO Statistics Database, May 2014

Note: 2013 data are provisional and incomplete. Delay is calculated as the time difference between the priority date and the date on which the ISA transmits the ISR to the International Bureau.

**Figure 6: Timeliness of international searching authorities (ISAs) to transmit international search reports (ISRs) to the international bureau**



Source: WIPO Statistics Database, May 2014

Note: 2013 data are provisional and incomplete. Delay is calculated as the time difference between the priority date and the date on which the ISA transmits the ISR to the International Bureau.

**Timeliness of international searching authorities (ISAs) to transmit international search reports (ISRs) to the international bureau**

**ISA: Australia**

Year / Quarter / Delay	2010	2011	2012	2013 to date	2010	2010	2010	2011	2011	2011	2011	2011	2012	2012	2012	2012	2013	2013	2013	2013
	-	-	-	-	2	3	4	1	2	3	4	1	2	3	4	1	2	3	4	
Total	3,126	3,270	2,883	2,580	682	814	918	942	732	812	784	761	723	736	663	605	620	703	652	
14 Months	1,429	1,467	1,354	1,127	357	373	398	401	344	365	357	310	378	356	310	234	307	307	279	
15 Months	941	913	789	835	196	260	276	261	213	238	201	204	181	216	188	205	170	237	223	
16 Months	453	543	405	381	73	122	152	168	98	142	135	138	95	92	80	107	78	101	95	
17 Months	172	194	213	139	37	27	50	47	47	42	58	71	41	51	50	35	28	37	39	
18 Months	63	78	72	42	10	19	18	24	20	12	22	25	14	15	18	14	12	8	8	
19 Months	36	22	20	27	6	7	10	7	6	4	5	7	6	3	4	7	12	4	4	
20 Months	8	9	6	17		1	3	7		1	1	1	3	1	1	2	5	7	3	
21 Months	7	8	7	7		1	4	4		2	2	4	2		1	1	6			
22-30 Months	16	27	15	5	3	4	6	16	3	5	3	1	2	2	2	10		2	2	
> 30 Months	1	9	2				1	7	1	1				1		1				

**ISA: Austria**

Year / Quarter / Delay	2010	2011	2012	2013 to date	2010	2010	2010	2011	2011	2011	2011	2011	2012	2012	2012	2012	2013	2013	2013	2013
	-	-	-	-	2	3	4	1	2	3	4	1	2	3	4	1	2	3	4	
Total	1,038	597	391	269	260	257	283	207	171	142	77	105	69	96	121	61	66	73	69	
14 Months	158	69	45	58	55	32	18	24	14	17	14	14	7	13	11	9	14	15	20	
15 Months	28	16	14	18	9	4	5	4	3	6	3	7	2	3	2	3	6	3	6	
16 Months	58	41	29	68	13	10	3	12	9	11	9	10	7	5	7	13	13	21	21	
17 Months	76	37	30	40	14	17	22	14	5	12	6	16	4	7	3	10	11	8	11	
18 Months	123	63	26	27	43	19	24	23	20	12	8	9	8	5	4	2	10	11	4	
19 Months	64	18	12	3	21	7	19	8	4	5	1	3	1	2	6	2			1	
20 Months	34	11	7	8	11	11	8	5	1	3	2	1	1	3	2	2	6			
21 Months	25	10	2	6	5	13	3	4	5		1	1			1	2	2	1	1	
22-30 Months	318	164	54	20	63	83	123	65	59	28	12	19	16	9	10	11	2	6	1	
> 30 Months	154	168	172	21	26	61	58	48	51	48	21	25	23	49	75	7	2	8	4	

**ISA: Brazil**

Year / Quarter / Delay	2010	2011	2012	2013 to date	2010	2010	2010	2011	2011	2011	2011	2011	2012	2012	2012	2012	2013	2013	2013	2013
	-	-	-	-	2	3	4	1	2	3	4	1	2	3	4	1	2	3	4	
Total	260	356	424	464	46	96	71	81	89	90	96	141	88	78	117	124	116	125	99	
14 Months	115	174	239	256	18	48	27	39	50	46	39	75	60	44	60	54	75	73	54	
15 Months	73	85	81	113	17	20	20	27	19	15	24	28	12	15	26	37	23	28	25	
16 Months	53	58	61	50	9	20	15	11	14	13	20	24	11	10	16	19	7	14	10	
17 Months	11	22	15	21	1	6	4	2	5	6	9	4		3	8	6	8	4	3	
18 Months	3	5	12	8		2	1			3	2	7		1	4	2	2	1	3	
19 Months	3	1	2	3	1		2	1				1			1	1			2	
20 Months	1	2	3	6			1			1	1		2	1		2		3	1	
21 Months		1	6	2						1		1	1	4		1		1		
22-30 Months	1	8	5	4			1	1	1	5	1	1	2		2	2	1		1	
> 30 Months				1															1	

Source: WIPO Statistics Database, May 2014

Note: 2013 data are provisional and incomplete. Delay is calculated as the time difference between the priority date and the date on which the ISA transmits the ISR to the International Bureau.

## Timeliness of international searching authorities (ISAs) to transmit international search reports (ISRs) to the international bureau

ISA: Canada																				
Year / Quarter / Delay	2010	2011	2012	2013 to date	2010	2010	2010	2011	2011	2011	2011	2011	2012	2012	2012	2012	2013	2013	2013	2013
	-	-	-		2	3	4	1	2	3	4	1	2	3	4	1	2	3	4	
Total	2,037	2,436	2,196	2,508	457	516	507	681	561	647	547	535	602	628	431	710	520	750	528	
14 Months	364	507	529	619	79	105	74	132	112	114	149	142	157	150	80	148	155	137	179	
15 Months	531	682	629	815	144	132	86	180	168	162	172	154	159	189	127	200	188	238	189	
16 Months	789	849	725	751	158	205	230	258	183	247	161	172	191	202	160	262	119	270	100	
17 Months	230	282	223	206	39	48	83	88	66	88	40	42	66	65	50	66	39	64	37	
18 Months	49	65	44	58	13	12	16	12	23	16	14	12	16	8	8	19	8	18	13	
19 Months	19	28	17	29	6	3	4	4	4	12	8	8	3	4	2	8	7	9	5	
20 Months	15	13	14	14	2	2	6	4	1	6	2	3	6	4	1	5	1	5	3	
21 Months	11	4	6	7	1	3	3	1	1	2			3	1	2	1	1	4	1	
22-30 Months	13	3	8	8	8	1	2	1	1			1	2	1	4	1	1	2	4	
> 30 Months	16	3	1	1	7	5	3	1	2						1				1	

ISA: China																				
Year / Quarter / Delay	2010	2011	2012	2013 to date	2010	2010	2010	2011	2011	2011	2011	2011	2012	2012	2012	2012	2013	2013	2013	2013
	-	-	-		2	3	4	1	2	3	4	1	2	3	4	1	2	3	4	
Total	10,615	14,599	18,220	20,698	2,107	3,353	3,175	3,524	3,081	4,255	3,739	4,633	4,299	4,824	4,464	5,405	4,518	5,120	5,655	
14 Months	6,606	9,828	12,517	13,908	1,319	2,135	1,960	2,207	2,079	2,967	2,575	3,113	3,061	3,454	2,889	3,578	3,121	3,470	3,739	
15 Months	1,656	2,020	2,448	2,904	300	574	422	519	409	579	513	676	625	544	603	814	536	711	843	
16 Months	2,204	2,421	2,684	3,286	464	608	724	731	521	601	568	722	507	672	783	849	719	784	934	
17 Months	74	133	290	292	17	16	30	12	31	47	43	57	50	91	92	85	70	87	50	
18 Months	39	92	154	175	3	9	22	16	22	29	25	41	29	37	47	59	35	38	43	
19 Months	17	55	63	55	2	9	5	23	6	18	8	13	12	11	27	13	10	10	22	
20 Months	11	37	37	30		2	8	12	12	11	2	6	8	6	17	1	5	9	15	
21 Months	6	5	9	34	1		3	2	1	2		2	1	3	3	4	14	8	8	
22-30 Months	2	8	16	13	1		1	2		1	5	3	6	4	3	1	8	3	1	
> 30 Months			2	1											2		1			

ISA: European Patent Office																				
Year / Quarter / Delay	2010	2011	2012	2013 to date	2010	2010	2010	2011	2011	2011	2011	2011	2012	2012	2012	2012	2013	2013	2013	2013
	-	-	-		2	3	4	1	2	3	4	1	2	3	4	1	2	3	4	
Total	68,695	70,182	72,231	77,432	16,769	17,442	16,844	17,328	17,108	17,856	17,890	17,969	18,201	18,402	17,659	19,893	19,463	19,846	18,230	
14 Months	13,224	15,336	17,138	19,127	3,085	3,637	3,577	3,247	3,714	4,084	4,291	3,849	4,233	4,558	4,498	4,372	4,539	5,234	4,982	
15 Months	12,718	13,594	15,485	16,302	3,094	3,284	3,178	3,148	3,081	3,566	3,799	3,779	3,634	4,110	3,962	4,166	3,944	4,234	3,958	
16 Months	13,624	14,112	14,570	15,300	3,233	3,474	3,212	3,770	3,266	3,692	3,384	3,821	3,486	3,736	3,527	4,345	3,960	3,811	3,184	
17 Months	8,496	8,584	7,967	8,854	2,095	2,088	2,063	2,312	2,234	2,085	1,953	2,069	2,171	1,851	1,876	2,284	2,350	2,158	2,062	
18 Months	5,661	5,638	5,002	5,475	1,540	1,351	1,289	1,411	1,583	1,306	1,338	1,244	1,421	1,189	1,148	1,356	1,488	1,314	1,317	
19 Months	3,575	3,167	3,139	3,112	976	807	867	797	867	734	769	821	906	735	677	834	830	733	715	
20 Months	2,501	2,195	2,091	2,011	609	611	542	606	539	528	522	569	530	531	461	568	522	491	430	
21 Months	1,804	1,597	1,428	1,444	451	394	418	473	392	388	344	406	388	367	267	383	342	411	308	
22-30 Months	6,102	5,045	4,505	4,691	1,445	1,513	1,471	1,308	1,215	1,257	1,265	1,180	1,200	1,108	1,017	1,188	1,215	1,207	1,081	
> 30 Months	990	914	906	1,116	241	283	227	256	217	216	225	231	232	217	226	397	273	253	193	

ISA: Finland																				
Year / Quarter / Delay	2010	2011	2012	2013 to date	2010	2010	2010	2011	2011	2011	2011	2011	2012	2012	2012	2012	2013	2013	2013	2013
	-	-	-		2	3	4	1	2	3	4	1	2	3	4	1	2	3	4	
Total	749	1,003	873	940	222	147	191	285	280	214	224	202	213	191	267	228	292	228	192	
14 Months	182	274	226	267	54	35	44	66	86	44	78	57	55	45	69	59	79	67	62	
15 Months	165	171	141	171	63	22	23	27	49	57	38	49	37	21	34	24	62	50	35	
16 Months	294	368	259	273	89	63	77	129	92	75	72	52	74	61	72	79	73	60	61	
17 Months	80	132	166	137	12	19	34	53	33	28	18	29	37	46	54	41	44	28	24	
18 Months	26	45	53	51	4	7	12	9	17	8	11	7	8	12	26	17	17	11	6	
19 Months	2	9	22	28		1	1		3		6	7	1	4	10	8	9	8	3	
20 Months		4	3	7				1		2	1		1		2				1	
21 Months			3	4														1	3	
22-30 Months				2														1	1	

ISA: Japan																				
Year / Quarter / Delay	2010	2011	2012	2013 to date	2010	2010	2010	2011	2011	2011	2011	2011	2012	2012	2012	2012	2013	2013	2013	2013
	-	-	-		2	3	4	1	2	3	4	1	2	3	4	1	2	3	4	
Total	29,989	35,641	40,531	42,383	8,331	7,081	7,972	7,761	9,707	8,811	9,362	8,767	11,151	9,923	10,690	9,642	12,318	10,195	10,228	
14 Months	19,945	22,674	25,637	27,198	5,400	4,716	5,488	5,136	6,070	5,608	5,860	5,480	6,780	6,332	7,045	6,137	7,690	6,691	6,680	
15 Months	6,760	9,099	10,674	11,264	1,995	1,550	1,777	1,740	2,616	2,200	2,543	2,357	3,244	2,447	2,626	2,467	3,475	2,508	2,814	
16 Months	3,137	3,689	4,061	3,745	895	782	683	831	986	948	924	896	1,098	1,093	974	989	1,101	949	706	
17 Months	111	123	101	115	34	27	15	42	24	38	19	22	20	28	31	35	30	34	16	
18 Months	29	39	43	47	5	4	8	9	9	13	8	10	6	17	10	12	17	11	7	
19 Months	6	9	9	9	2	2	1	3	2	2	2	2	1	5	3	1	4	4	4	
20 Months		3	3	2						1	2	1	1	1	1			1	1	
21 Months			2	2							2	1	1				1		1	
22-30 Months			2	1							1	1	1	1	1				1	
> 30 Months	1	1																		

Source: WIPO Statistics Database, May 2014

Note: 2013 data are provisional and incomplete. Delay is calculated as the time difference between the priority date and the date on which the ISA transmits the ISR to the International Bureau.

## Timeliness of international searching authorities (ISAs) to transmit international search reports (ISRs) to the international bureau

ISA: Nordic Patent Institute																			
Year / Quarter / Delay	2010	2011	2012	2013 to date	2010	2010	2010	2011	2011	2011	2011	2012	2012	2012	2012	2013	2013	2013	2013
Total	283	284	266	222	83	73	56	83	82	68	51	71	70	82	43	65	46	52	59
14 Months	50	50	40	33	19	9	8	14	13	13	10	14	13	8	5	5	13	4	11
15 Months	211	209	201	158	59	55	42	65	58	49	37	50	51	65	35	46	28	44	40
16 Months	16	25	20	26	3	6	5	4	11	6	4	6	5	6	3	13	5	3	5
17 Months	3		3	4	1	1	1						1	2		1			3
18 Months	1		1			1													
19 Months	2				1	1													
22-30 Months			1	1									1						1

ISA: Republic of Korea																			
Year / Quarter / Delay	2010	2011	2012	2013 to date	2010	2010	2010	2011	2011	2011	2011	2012	2012	2012	2012	2013	2013	2013	2013
Total	20,964	23,159	29,904	34,371	5,630	5,171	4,900	5,033	5,675	6,266	6,185	7,925	7,357	6,898	7,724	12,848	7,283	7,233	7,007
14 Months	2,893	3,244	5,767	8,171	742	829	656	683	796	906	859	1,130	1,381	1,567	1,689	2,422	1,658	1,912	2,179
15 Months	238	361	558	5,226	67	62	56	89	84	102	86	134	122	110	192	943	979	1,640	1,664
16 Months	329	318	761	9,986	93	110	43	92	74	77	75	182	157	138	284	1,702	3,275	2,595	2,414
17 Months	508	377	1,374	4,389	169	109	84	70	75	130	102	306	373	226	469	2,237	922	738	492
18 Months	1,132	866	3,058	2,869	423	236	155	181	191	198	296	603	869	524	1,062	2,427	195	128	119
19 Months	4,997	2,348	7,118	1,986	1,434	1,211	1,201	837	463	403	645	1,117	2,198	1,405	2,398	1,840	87	26	33
20 Months	8,427	5,547	7,008	831	2,233	1,923	1,895	1,601	1,251	1,303	1,392	2,235	1,682	1,987	1,104	759	39	13	20
21 Months	1,710	7,697	3,058	467	318	560	516	957	2,089	2,485	2,166	1,641	412	762	243	355	32	28	52
22-30 Months	697	2,269	1,165	400	144	126	280	502	562	652	553	573	161	165	266	149	86	131	34
> 30 Months	33	132	37	46	7	5	14	21	90	10	11	4	2	14	17	14	10	22	

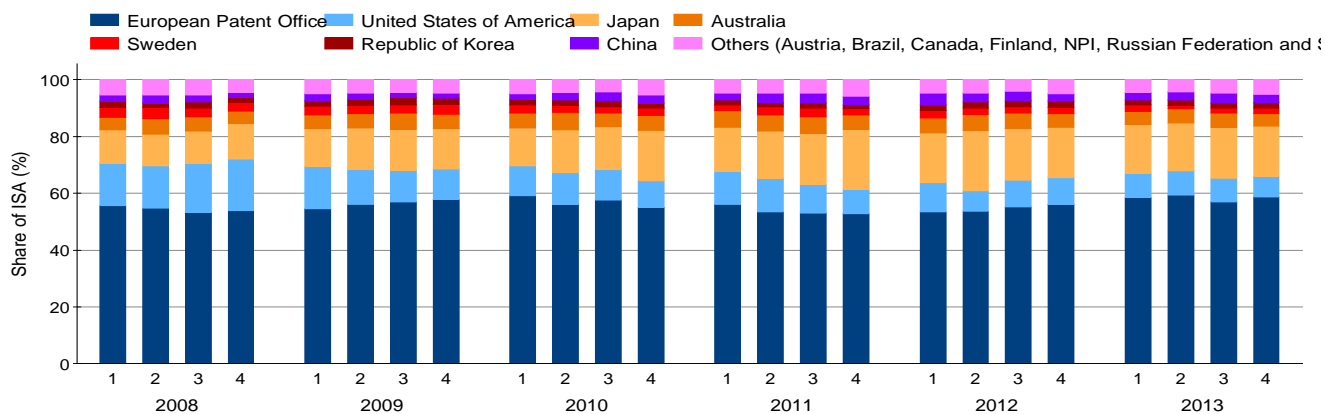
ISA: Russian Federation																			
Year / Quarter / Delay	2010	2011	2012	2013 to date	2010	2010	2010	2011	2011	2011	2011	2012	2012	2012	2012	2013	2013	2013	2013
Total	851	1,008	1,919	3,087	171	223	253	217	251	247	293	235	399	526	759	588	771	827	901
14 Months	392	471	610	1,098	79	95	110	106	104	130	131	126	148	140	196	198	328	273	299
15 Months	64	76	281	355	8	22	18	14	23	18	21	15	54	92	120	59	105	73	118
16 Months	128	171	528	941	28	24	46	33	39	38	61	35	120	143	230	206	207	263	265
17 Months	159	170	240	418	34	38	49	35	44	35	56	32	29	82	97	72	83	138	125
18 Months	75	72	156	152	11	33	21	17	30	13	12	15	23	45	73	28	24	45	55
19 Months	10	27	66	49	2	1	6	6	9	6	6	7	16	16	27	12	12	11	14
20 Months	12	17	22	21	5	5	1	6	2	5	4	2	5	6	9	4	5	4	8
21 Months	9	2	10	13	4	4	1			1	1	3	3	1	3	1	2	6	4
22-30 Months	2	2	5	40		1	1			1	1		1	1	3	8	5	14	13
> 30 Months			1												1				

ISA: Spain																			
Year / Quarter / Delay	2010	2011	2012	2013 to date	2010	2010	2010	2011	2011	2011	2011	2012	2012	2012	2012	2013	2013	2013	2013
Total	1,392	1,290	1,478	1,255	385	312	345	216	313	402	359	359	427	312	380	290	302	309	354
14 Months	450	343	460	353	125	120	102	67	63	124	89	101	134	113	112	85	82	88	98
15 Months	227	55	146	197	68	64	41	13	9	26	7	8	54	43	41	53	39	54	51
16 Months	409	178	352	333	102	91	95	70	37	58	13	45	92	96	119	87	74	92	80
17 Months	207	382	311	209	71	24	69	48	97	114	123	125	92	32	62	20	56	47	86
18 Months	70	179	113	83	14	7	24	16	64	18	81	48	36	13	16	23	26	16	18
19 Months	19	71	50	40	2	4	12	1	26	19	25	16	9	7	18	9	14	5	12
20 Months	4	29	19	14	2		1		8	14	7	12	2	3	2	4	5	3	2
21 Months	1	18	6	10		1			1	11	6	1	1	2	2	2	3	3	2
22-30 Months	2	33	14	13				1	7	18	7	2	7		5	4	3	1	5
> 30 Months	3	2	7	3	1	1	1		1		1	1		3	3	3			

ISA: Sweden																			
Year / Quarter / Delay	2010	2011	2012	2013 to date	2010	2010	2010	2011	2011	2011	2011	2012	2012	2012	2012	2013	2013	2013	2013
Total	1,993	1,950	1,478	1,543	575	465	480	551	476	440	483	502	362	355	335	381	353	406	403
14 Months	654	589	505	488	197	141	171	163	154	118	154	139	120	130	116	126	133	117	112
15 Months	379	464	296	187	137	109	81	156	156	92	60	67	70	87	72	69	50	43	25
16 Months	814	762	575	485	214	169	198	211	146	195	210	242	134	106	93	113	95	137	140
17 Months	115	87	108	183	18	37	25	16	12	25	34	40	25	22	21	45	37	40	61
18 Months	17	25	35	46	7	6	3	2	4	6	13	11	2	9	13	7	6	12	21
19 Months	3	6	17	57	1	1	1	1			5	2	2		13	13	18	13	13
20 Months	2	7	8	49	1			1	3	2	1		1	1	6	4	10	22	13
21 Months	2	1	1	37						1			1			4	3	17	13
22-30 Months	6	8	9	10		2	1		1	1	6	1	7		1		1	5	4
> 30 Months	1	1		1				1											1

ISA: United States of America																			
Year / Quarter / Delay	2010	2011	2012	2013 to date	2010	2010	2010	2011	2011	2011	2011	2012	2012	2012	2012	2013	2013	2013	2013
Total	15,554	12,961	18,471	13,433	3,851	4,169	3,782	3,694	3,587	2,409	3,271	4,598	5,150	4,663	4,060	4,498	3,719	2,289	2,927
14 Months	8,051	3,663	2,966	2,760	2,010	2,220	2,259	1,527	1,397	353	386	506	680	849	931	937	1,024	381	418
15 Months	3,430	3,151	4,468	4,099	853	951	612	1,261	1,152	615	123	257	640	1,686	1,885	1,946	1,572	346	235
16 Months	1,377	2,007	4,512	1,859	290	389	310	332	324	728	623	1,003	1,967	1,110	432	476	347	687	349
17 Months	975	2,208	3,379	2,155	282	222	219	285	323	371	1,229	1,719	948	365	347	527	287	464	877
18 Months	521	814	1,168	1,143	122	140	134	115	125	143	431	385	243	337	203	244	126	122	651
19 Months	314	380	779	458	86	62	85	63	92	59	166	213	329	149	88	115	57	49	237
20 Months	197	191	458	259	47	46	49	27	38	36	90	187	156	69	46	52	54	91	62
21 Months	151	146	173	166	36	31	28	34	47	19	46	76	55	18	24	36	62	37	31
22-30 Months	383	258	300	356	87	51	64	20	56	59	123	102	81	62	55	142	124		

**Figure 7: Demand for international preliminary examination (IPE) by international preliminary examining authorities (IPEAs)**



Source: WIPO Statistics Database, May 2014

Note: 2013 data are provisional and incomplete. Counts are based on the date of filing of the Chapter II demand.

**Demand for international preliminary examination (IPE) by international preliminary examining authorities (IPEAs)**

**Number of demand by IPEA**

IPEA_Name Year / Quarter	2010 -	2011 -	2012 -	2013 to date	2010 2	2010 3	2010 4	2011 1	2011 2	2011 3	2011 4	2012 1	2012 2	2012 3	2012 4	2013 1	2013 2	2013 3	2013 4
<b>Total</b>	<b>13,907</b>	<b>13,743</b>	<b>14,235</b>	<b>13,207</b>	<b>3,541</b>	<b>3,527</b>	<b>3,376</b>	<b>3,450</b>	<b>3,376</b>	<b>3,469</b>	<b>3,448</b>	<b>3,583</b>	<b>3,790</b>	<b>3,500</b>	<b>3,362</b>	<b>3,201</b>	<b>3,389</b>	<b>3,475</b>	<b>3,142</b>
Australia	745	780	753	641	221	170	174	207	189	209	175	187	215	190	161	149	170	181	141
Austria	36	17	14	18	7	9	5	3	4	4	6	1	5	4	4	5	5	4	4
Brazil	7	38	43	40	3	1	2	8	2	8	20	5	16	8	14	6	11	12	11
Canada	272	270	254	263	75	67	73	68	63	65	74	81	60	58	55	64	54	76	69
China	362	421	474	381	94	110	91	82	106	124	109	147	114	120	93	82	94	119	86
European Patent Office	7,918	7,394	7,763	7,704	1,987	2,030	1,856	1,932	1,801	1,842	1,819	1,912	2,035	1,928	1,888	1,870	2,008	1,982	1,844
Finland	123	125	106	91	24	29	29	29	32	37	27	26	35	25	20	20	19	22	30
Israel			1	29											1	1	6	9	13
Japan	2,121	2,446	2,661	2,291	529	527	600	531	565	622	728	628	801	634	598	547	565	621	558
Nordic Patent Institute	40	40	44	33	7	9	13	8	11	10	11	9	7	14	14	10	7	6	10
Republic of Korea	271	223	299	252	70	73	59	59	54	62	48	68	82	74	75	56	63	65	68
Russian Federation	76	83	118	77	19	14	26	19	18	14	32	29	39	13	37	23	23	18	13
Spain	123	120	84	81	29	25	39	29	34	27	30	24	19	21	20	21	26	19	15
Sweden	353	343	331	222	81	82	90	71	98	100	74	95	88	77	71	69	42	56	55
United States of America	1,460	1,441	1,289	1,081	395	381	319	404	399	344	294	370	274	334	311	278	295	285	223

**Distribution of IPE demand by IPEA (%)**

IPEA_Name Year / Quarter	2010 -	2011 -	2012 -	2013 to date	2010 2	2010 3	2010 4	2011 1	2011 2	2011 3	2011 4	2012 1	2012 2	2012 3	2012 4	2013 1	2013 2	2013 3	2013 4
Australia	5.4	5.7	5.3	4.9	6.2	4.8	5.2	6.0	5.6	6.0	5.1	5.2	5.7	5.4	4.8	4.7	5.0	5.2	4.5
Austria	0.3	0.1	0.1	0.1	0.2	0.3	0.1	0.1	0.1	0.1	0.2	0.0	0.1	0.1	0.1	0.2	0.1	0.1	0.1
Brazil	0.1	0.3	0.3	0.3	0.1	0.0	0.1	0.2	0.1	0.2	0.6	0.1	0.4	0.2	0.4	0.2	0.3	0.3	0.4
Canada	2.0	2.0	1.8	2.0	2.1	1.9	2.2	2.0	1.9	1.9	2.1	2.3	1.6	1.7	1.6	2.0	1.6	2.2	2.2
China	2.6	3.1	3.3	2.9	2.7	3.1	2.7	2.4	3.1	3.6	3.2	4.1	3.0	3.4	2.8	2.6	2.8	3.4	2.7
European Patent Office	56.9	53.8	54.5	58.3	56.1	57.6	55.0	56.0	53.3	53.1	52.8	53.4	53.7	55.1	56.2	58.4	59.3	57.0	58.7
Finland	0.9	0.9	0.7	0.7	0.7	0.8	0.9	0.8	0.9	1.1	0.8	0.7	0.9	0.7	0.6	0.6	0.6	0.6	1.0
Israel			0.0	0.2											0.0	0.0	0.2	0.3	0.4
Japan	15.3	17.8	18.7	17.3	14.9	14.9	17.8	15.4	16.7	17.9	21.1	17.5	21.1	18.1	17.8	17.1	16.7	17.9	17.8
Nordic Patent Institute	0.3	0.3	0.3	0.2	0.2	0.3	0.4	0.2	0.3	0.3	0.3	0.3	0.2	0.4	0.4	0.3	0.2	0.2	0.3
Republic of Korea	1.9	1.6	2.1	1.9	2.0	2.1	1.7	1.7	1.6	1.8	1.4	1.9	2.2	2.1	2.2	1.7	1.9	1.9	2.2
Russian Federation	0.5	0.6	0.8	0.6	0.5	0.4	0.8	0.6	0.5	0.4	0.9	0.8	1.0	0.4	1.1	0.7	0.7	0.5	0.4
Spain	0.9	0.9	0.6	0.6	0.8	0.7	1.2	0.8	1.0	0.8	0.9	0.7	0.5	0.6	0.6	0.7	0.8	0.5	0.5
Sweden	2.5	2.5	2.3	1.7	2.3	2.3	2.7	2.1	2.9	2.9	2.1	2.7	2.3	2.2	2.1	2.2	1.2	1.6	1.8
United States of America	10.5	10.5	9.1	8.2	11.2	10.8	9.4	11.7	11.8	9.9	8.5	10.3	7.2	9.5	9.3	8.7	8.7	8.2	7.1

Source: WIPO Statistics Database, May 2014

Note: 2013 data are provisional and incomplete. Counts are based on the date of filing of the Chapter II demand.

**Number of supplementary international search request**

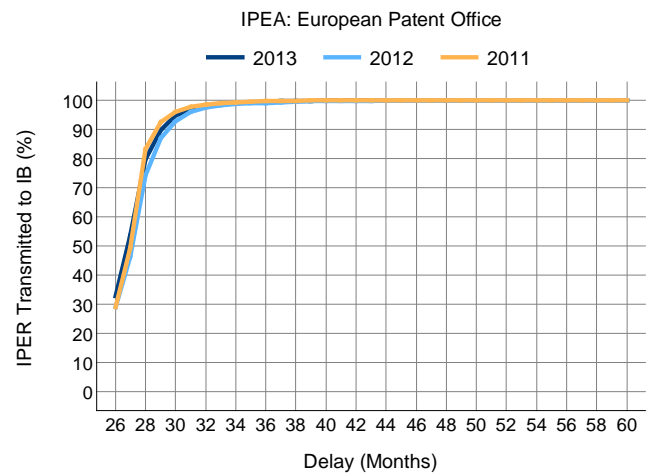
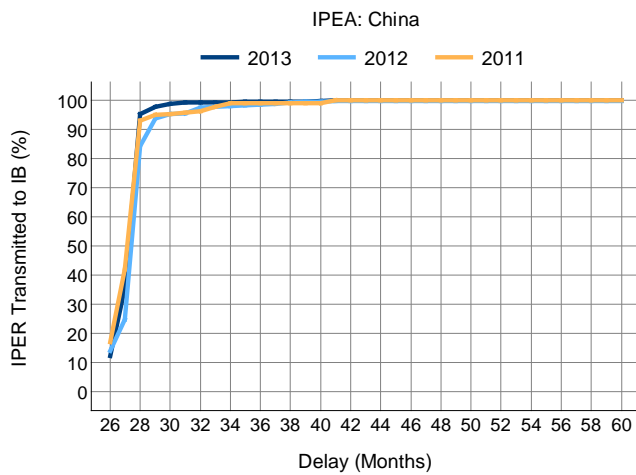
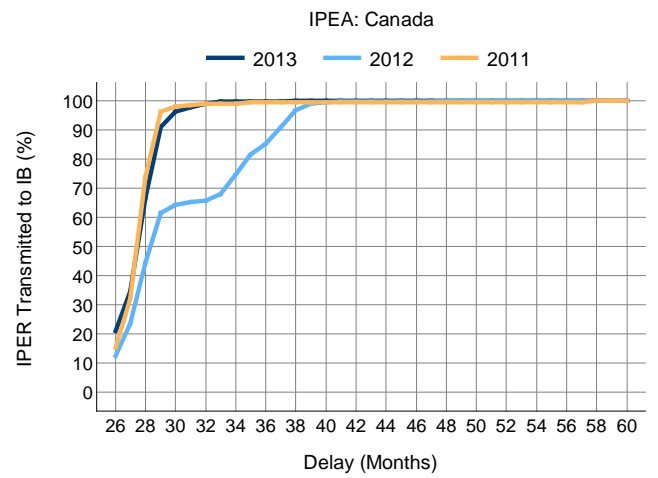
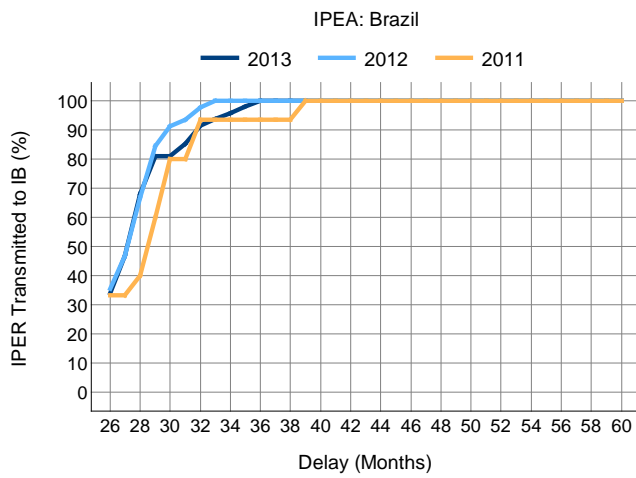
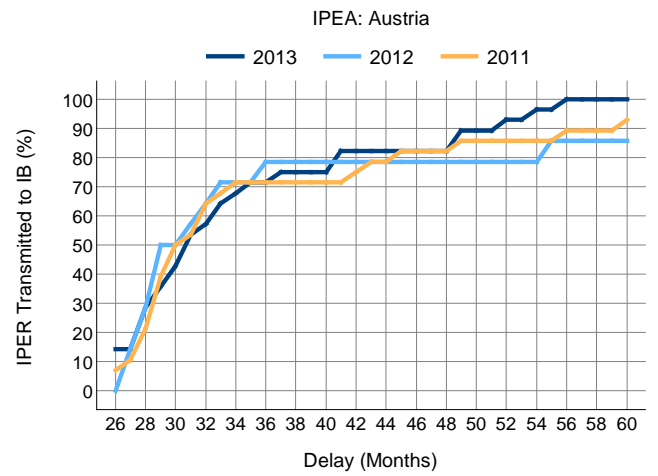
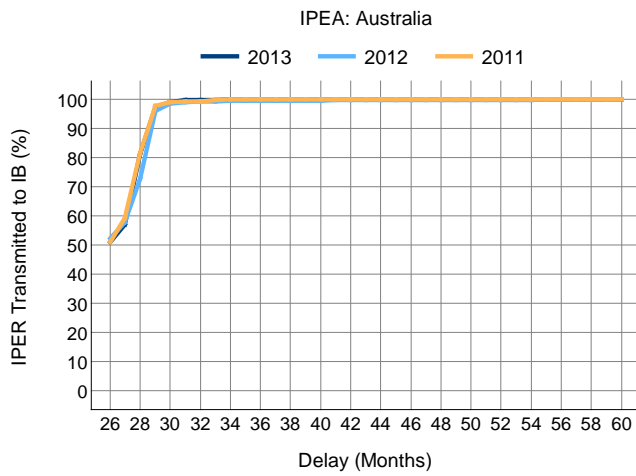
**Number of SIS by ISA**

ISA_Name Year / Quarter	2010 -	2011 -	2012 -	2013 to date	2010 2	2010 3	2010 4	2011 1	2011 2	2011 3	2011 4	2012 1	2012 2	2012 3	2012 4	2013 1	2013 2	2013 3	2013 4	
<b>Total</b>	<b>41</b>	<b>41</b>	<b>44</b>	<b>61</b>	<b>13</b>	<b>8</b>	<b>10</b>	<b>9</b>	<b>7</b>	<b>8</b>	<b>17</b>	<b>21</b>	<b>13</b>	<b>7</b>	<b>3</b>	<b>6</b>	<b>29</b>	<b>8</b>	<b>18</b>	
Austria		1	2	1						1		1		1						1
European Patent Office	3	7	20	27		1	2	1	3		3	12	3	3	2	3	12	5	7	
Finland			1									1								
Nordic Patent Institute	1		2		1							2								
Russian Federation	35	31	19	32	11	7	8	7	4	6	14	5	10	3	1	3	17	3	9	
Sweden	2	2		1	1			1		1									1	

Source: WIPO Statistics Database, May 2014

Note: 2013 data are provisional and incomplete.

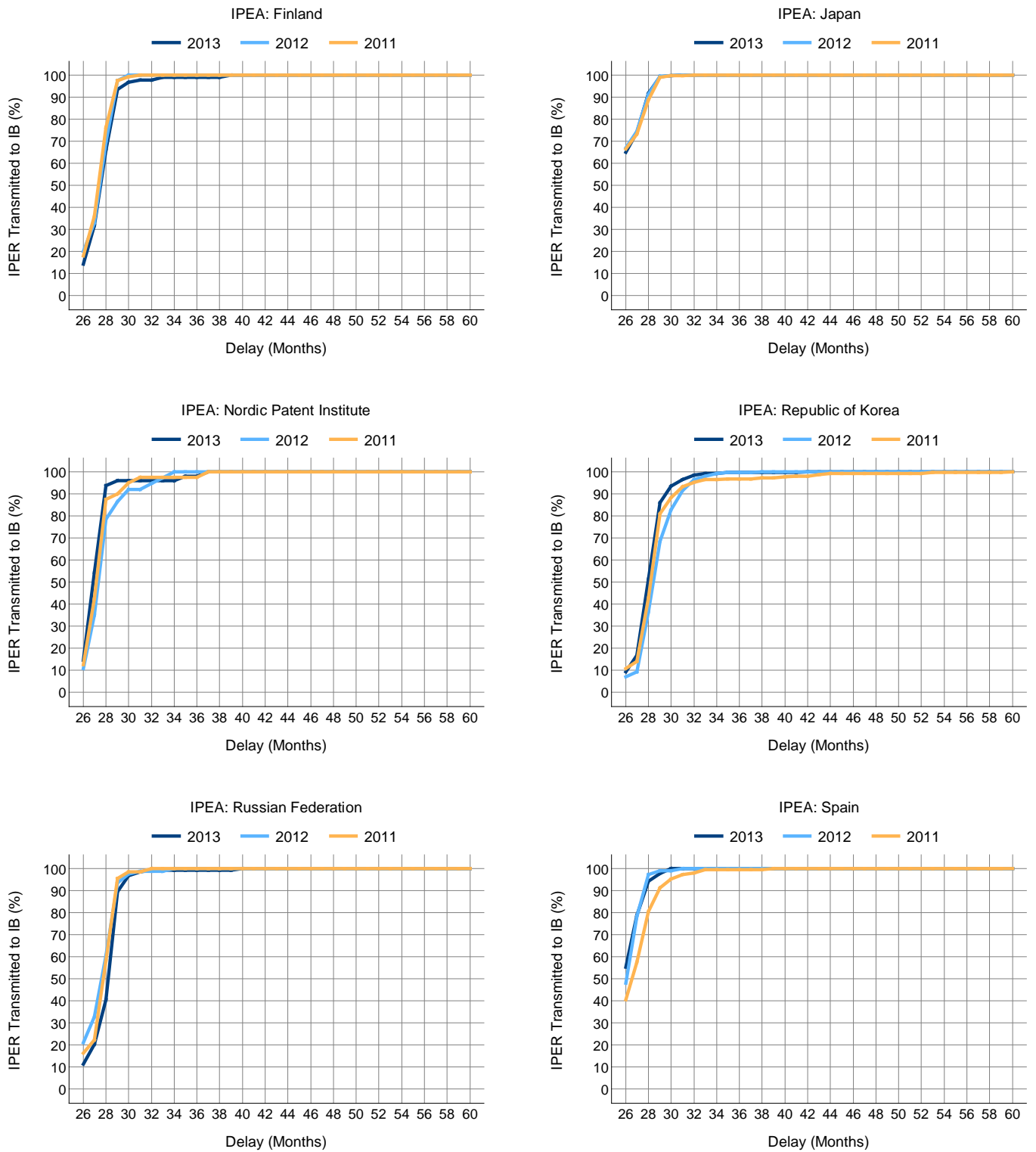
**Figure 8: Timeliness of international preliminary examining authorities (IPEAs) to transmit international preliminary examination reports (IPERs) to the international bureau**



Source: WIPO Statistics Database, May 2014

Note: 2013 data are provisional and incomplete. Delay is calculated as the time difference between the priority date and the date on which the International Bureau received a copy of the IPER from IPEA.

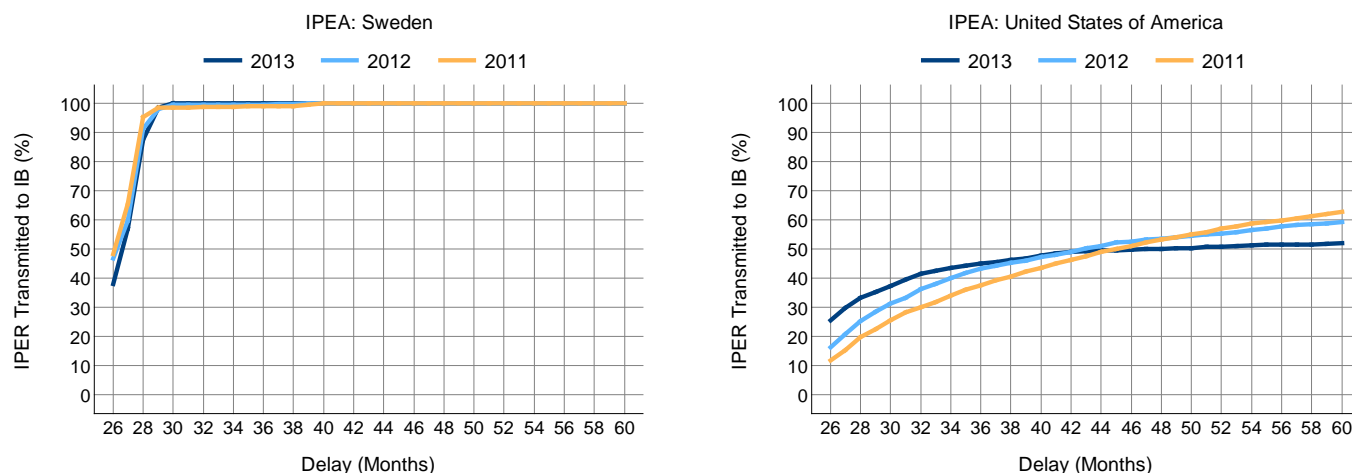
**Figure 8: Timeliness of international preliminary examining authorities (IPEAs) to transmit international preliminary examination reports (IPERs) to the international bureau**



Source: WIPO Statistics Database, May 2014

Note: 2013 data are provisional and incomplete. Delay is calculated as the time difference between the priority date and the date on which the International Bureau received a copy of the IPER from IPEA.

**Figure 8: Timeliness of international preliminary examining authorities (IPEAs) to transmit international preliminary examination reports (IPERs) to the international bureau**



Source: WIPO Statistics Database, May 2014

Note: 2013 data are provisional and incomplete. Delay is calculated as the time difference between the priority date and the date on which the International Bureau received a copy of the IPER from IPEA.

**Timeliness of international preliminary examining authorities (IPEAs) to transmit international preliminary examination reports (IPERs) to the international bureau**

**IPEA: Australia**

Year / Quarter / Delay	2010	2011	2012	2013 to date	2010	2010	2010	2011	2011	2011	2011	2011	2012	2012	2012	2012	2012	2013	2013	2013	2013
Total	850	701	818	653	222	225	194	183	153	197	168	219	211	203	185	184	147	148	174		
26 Months	427	357	428	333	121	119	95	91	74	101	91	104	115	108	101	88	75	80	90		
27 Months	61	58	44	40	12	19	16	17	14	19	8	10	8	14	12	8	9	13	10		
28 Months	203	156	123	158	43	61	54	47	41	47	21	14	38	35	36	31	36	38	53		
29 Months	130	114	190	104	42	21	19	22	23	25	44	85	42	34	29	44	23	16	21		
30 Months	12	8	21	11	2	2	1	2		5	1	4	6	6	5	10	1				
31 Months	4	2	4	5	2	1		2					1		2	1	3	2			
32 Months			1	2							1	1	1								
> 32 Months	13	5	6	2		2	9	2	1	2			1	4	1			1	1		

**IPEA: Austria**

Year / Quarter / Delay	2010	2011	2012	2013 to date	2010	2010	2010	2011	2011	2011	2011	2011	2012	2012	2012	2012	2012	2013	2013	2013	2013
Total	61	28	14	28	16	6	24	10	6	4	8	5	4	4	4	1	7	11	5	5	
26 Months	9	2		4	2	2	1	1			1								1	3	
27 Months	1	1	2										1		1						
28 Months	8	3	2	4	3	1			2	1									1	1	2
29 Months	8	5	3	2	3		5	5					1	1	1				1		1
30 Months	6	3		2	1		2	1	1	1									1		1
31 Months	8	1	1	3	4	1	2		1							1	2	1			
32 Months	5	3	1	1			5			1	2		1						1		
> 32 Months	16	10	5	12	3	2	8	2	2	1	5	2	1	2				5	5	1	1

**IPEA: Brazil**

Year / Quarter / Delay	2010	2011	2012	2013 to date	2010	2010	2010	2011	2011	2011	2011	2011	2012	2012	2012	2012	2012	2013	2013	2013	2013
Total		15	45	47	2	3	4		3	3	4	5	11	14	7	13	10	14	8	15	
26 Months		5	16	16					1	1	3	5	4	3	4	4	4	4	2	6	
27 Months			5	6									2	2		1	2	2	1	1	
28 Months		1	9	10					1		1	3	1	4		3	1	3	1	6	
29 Months		3	8	6				1	2			1	4	2	1	1	1	3	1	1	
30 Months		3	3							1	2	1			2						
31 Months			1	2										1					1	1	
32 Months		2	2	3				2							1	1			1	1	1
> 32 Months		1	1	4						1		1					3			1	

Source: WIPO Statistics Database, May 2014

Note: 2013 data are provisional and incomplete. Delay is calculated as the time difference between the priority date and the date on which the International Bureau received a copy of the IPER from IPEA.



## Timeliness of international preliminary examining authorities (IPEAs) to transmit international preliminary examination reports (IPERs) to the international bureau

### IPEA: Canada

Year / Quarter / Delay	2010	2011	2012	2013	2010	2010	2010	2011	2011	2011	2011	2011	2012	2012	2012	2012	2013	2013	2013	2013
	-	-	-	to date	2	3	4	1	2	3	4	1	2	3	4	1	2	3	4	
Total	258	184	360	255	52	56	77	75	66	42	1	33	68	197	62	70	63	66	56	
26 Months	33	28	45	54	6	7	13	10	11	6	1	5	17	12	11	14	15	11	14	
27 Months	38	31	40	34	7	9	13	12	9	10		10	10	8	12	12	5	11	6	
28 Months	107	77	75	82	21	25	25	37	25	15		11	23	28	13	17	17	24	24	
29 Months	59	41	61	62	14	11	19	14	18	9		5	12	23	21	20	17	14	11	
30 Months	8	3	10	13	1	2	2	1	1	1		1	3	5	1	2	7	4		
31 Months	2	1	4	4		1			1				2		2	3			1	
32 Months	2	1	2	3	1	1		1				1			1	1	2			
> 32 Months	9	2	123	3	2		5		1	1			1	121	1	1	1		2	

### IPEA: China

Year / Quarter / Delay	2010	2011	2012	2013	2010	2010	2010	2011	2011	2011	2011	2011	2012	2012	2012	2012	2013	2013	2013	2013
	-	-	-	to date	2	3	4	1	2	3	4	1	2	3	4	1	2	3	4	
Total	394	340	450	433	67	79	100	99	72	84	85	107	95	128	120	156	95	116	66	
26 Months	50	58	63	53	5	10	12	10	15	24	9	17	21	17	8	15	26	10	2	
27 Months	84	85	49	101	24	13	19	27	13	30	15	11	8	16	14	40	10	30	21	
28 Months	196	173	267	258	37	53	59	56	40	29	48	56	59	76	76	93	55	69	41	
29 Months	53	7	43	11	1	2	3	4	3			12	5	12	14	5	2	3	1	
30 Months	5	1	6	4		1	3			1		1			5	2	1	1		
31 Months	1	1	2	2							1	2					1		1	
32 Months		2	9					1		1	6	1		2						
> 32 Months	5	13	11	4			4	1	1		11	2	1	7	1	1	1		3	

### IPEA: European Patent Office

Year / Quarter / Delay	2010	2011	2012	2013	2010	2010	2010	2011	2011	2011	2011	2011	2012	2012	2012	2012	2013	2013	2013	2013
	-	-	-	to date	2	3	4	1	2	3	4	1	2	3	4	1	2	3	4	
Total	8,264	7,177	7,743	7,313	2,133	2,061	1,934	2,015	1,821	1,935	1,406	1,812	1,800	2,090	2,041	2,016	1,849	1,853	1,595	
26 Months	2,585	2,093	2,242	2,395	699	669	581	549	617	562	365	432	481	667	662	616	626	622	531	
27 Months	1,687	1,446	1,350	1,516	431	454	372	429	380	400	237	314	298	369	369	420	374	396	326	
28 Months	2,736	2,431	2,164	1,913	677	661	640	733	576	641	481	555	509	579	521	521	504	482	406	
29 Months	680	670	975	736	193	130	165	160	129	195	186	304	270	204	197	229	173	175	159	
30 Months	230	240	450	356	59	65	53	55	44	71	70	112	112	122	104	104	87	81	84	
31 Months	106	130	251	150	27	27	31	39	31	28	32	47	73	55	76	44	34	35	37	
32 Months	51	54	118	91	14	15	9	19	12	15	8	19	31	41	27	20	26	25	20	
> 32 Months	189	113	193	156	33	40	83	31	32	23	27	29	26	53	85	62	25	37	32	

### IPEA: Finland

Year / Quarter / Delay	2010	2011	2012	2013	2010	2010	2010	2011	2011	2011	2011	2011	2012	2012	2012	2012	2013	2013	2013	2013
	-	-	-	to date	2	3	4	1	2	3	4	1	2	3	4	1	2	3	4	
Total	139	122	115	91	39	26	30	27	24	39	32	32	31	31	21	34	17	23	17	
26 Months	40	22	23	13	11	2	10	6	2	4	10	4	8	6	5	4	1	4	4	
27 Months	28	22	15	16	6	7	5	5	3	8	6	6	3	5	1	6	4	4	2	
28 Months	57	49	42	31	19	15	8	8	13	19	9	13	14	10	5	12	4	9	6	
29 Months	11	26	32	25	3	2	4	8	6	6	6	9	5	9	9	9	7	4	5	
30 Months	1	2	3	3			1			1	1		1	1	1	1	1	1		
31 Months	2	1		1			2			1									1	
> 32 Months				2													2			

### IPEA: Japan

Year / Quarter / Delay	2010	2011	2012	2013	2010	2010	2010	2011	2011	2011	2011	2011	2012	2012	2012	2012	2013	2013	2013	2013
	-	-	-	to date	2	3	4	1	2	3	4	1	2	3	4	1	2	3	4	
Total	1,905	2,206	2,741	2,470	555	442	438	568	530	529	579	660	700	695	686	609	614	666	581	
26 Months	1,188	1,466	1,836	1,608	344	271	287	394	345	336	391	460	442	477	457	405	394	434	375	
27 Months	152	150	202	218	42	31	28	34	50	34	32	39	62	50	51	41	56	58	63	
28 Months	302	343	459	437	94	79	64	77	80	101	85	100	127	117	115	114	125	115	83	
29 Months	248	224	226	188	74	56	53	60	49	53	62	58	62	48	58	42	35	55	56	
30 Months	11	14	11	13	1	4	4	2	3	4	5	1	5	2	3	5	3	4	1	
31 Months	2	3	4	4		1		1	1	1		1	2	1		1	1		2	
32 Months		2	1								2				1					
> 32 Months	2	4	2	2			2		2		2	1			1	1			1	

Source: WIPO Statistics Database, May 2014

Note: 2013 data are provisional and incomplete. Delay is calculated as the time difference between the priority date and the date on which the International Bureau received a copy of the IPER from IPEA.

## Timeliness of international preliminary examining authorities (IPEAs) to transmit international preliminary examination reports (IPERs) to the international bureau

<b>IPEA: Nordic Patent Institute</b>																				
Year / Quarter / Delay	2010	2011	2012	2013 to date	2010	2010	2010	2011	2011	2011	2011	2011	2012	2012	2012	2012	2013	2013	2013	2013
Total	34	40	37	48	11	6	10	11	8	11	10	10	7	10	10	14	16	9	9	
26 Months	14	5	4	7	6	3	2	1	2	3	2	1	2	1	2	2	2	2	2	1
27 Months	4	12	9	19	3	1		3	2	4	3	4	2			3	3	9	4	3
28 Months	9	18	16	19	1	2	4	6	5	3	4	4	4	6	2	7	4	3	5	
29 Months	5	1	3	1			4			1	1		1	1	1		1			
30 Months		2	2					1		1			1			1				
31 Months	1	1							1											
32 Months			1											1						
> 32 Months	1	1	2	2	1							1		1	1	1	1			

<b>IPEA: Republic of Korea</b>																				
Year / Quarter / Delay	2010	2011	2012	2013 to date	2010	2010	2010	2011	2011	2011	2011	2011	2012	2012	2012	2012	2013	2013	2013	2013
Total	308	248	254	255	80	74	52	66	64	56	62	38	57	61	98	68	48	70	69	
26 Months	18	27	18	24	6	4	2	10	9	4	4	2	1	6	9	8	5	3	8	
27 Months	13	8	6	19	2	1		2	1	1	4	1	1	3	1	3	5	6	5	
28 Months	120	71	69	88	27	29	19	15	17	23	16	11	14	19	25	22	13	23	30	
29 Months	114	95	81	88	34	22	23	26	28	16	25	11	17	16	37	25	21	21	21	
30 Months	20	18	36	19	5	6	6	9	2	4	3	4	9	10	13	5	1	9	4	
31 Months	21	12	22	8	5	12	1	2	2	3	5	5	7	4	6	2	3	3		
32 Months		5	13	5					2	3	3	3	3	1	6	1	3	1		
> 32 Months	2	12	9	4	1	1	2	3	5	2	1	5	2	1	2		2			

<b>IPEA: Russian Federation</b>																			
Year / Quarter / Delay	2010	2011	2012	2013 to date	2010	2010	2010	2011	2011	2011	2011	2012	2012	2012	2012	2013	2013	2013	2013
Total	62	67	76	123	11	14	22	16	19	12	20	18	18	23	17	37	34	20	42
26 Months	8	11	16	14	2	3	1	4	4	1	2	4	8	2	2	2	8	2	2
27 Months	3	4	9	11	1		1	1	2		1	4	3	1	1	5	2	1	3
28 Months	22	24	21	25	5	4	6	3	10	5	6	3	5	7	6	10	3	4	8
29 Months	27	25	25	60	3	6	13	7	2	5	11	7	2	10	6	17	17	8	18
30 Months		2	3	9				1		1				2	1	3	2	3	1
31 Months		1	1	2											1		1	1	
32 Months		1		1					1									1	
> 32 Months	2		1	1		1	1							1			1		

<b>IPEA: Spain</b>																			
Year / Quarter / Delay	2010	2011	2012	2013 to date	2010	2010	2010	2011	2011	2011	2011	2012	2012	2012	2012	2013	2013	2013	2013
Total	109	148	106	85	25	24	19	47	32	40	29	30	22	33	21	20	17	22	26
26 Months	42	60	51	47	11	6	4	18	13	14	15	10	13	14	14	10	12	10	15
27 Months	23	25	32	20	4	9	7	6	7	6	6	14	6	7	5	8	4	5	3
28 Months	32	34	20	13	7	8	4	11	5	12	6	5	3	10	2	2	1	5	5
29 Months	11	16	2	3	3		4	6	4	5	1	1		1				1	2
30 Months	1	6		2		1		3	1	2								1	1
31 Months		3	1					2				1		1					
32 Months		1							1										
> 32 Months		3						1	1	1									

<b>IPEA: Sweden</b>																			
Year / Quarter / Delay	2010	2011	2012	2013 to date	2010	2010	2010	2011	2011	2011	2011	2012	2012	2012	2012	2013	2013	2013	2013
Total	409	357	332	249	129	87	92	96	65	68	128	97	78	94	63	83	69	61	36
26 Months	193	172	155	95	54	30	57	47	33	33	59	45	42	32	36	28	23	27	17
27 Months	81	62	43	47	26	16	18	22	13	7	20	14	10	14	5	22	14	6	5
28 Months	120	106	105	76	45	40	11	26	16	25	39	28	18	40	19	28	18	22	8
29 Months	12	11	22	27	3	1	4	1	2	1	7	8	6	6	2	5	13	6	3
30 Months	2		5	4	1		1							2	2	1			3
31 Months																			
32 Months		1							1										
> 32 Months	1	5	2				1			2	3	2							

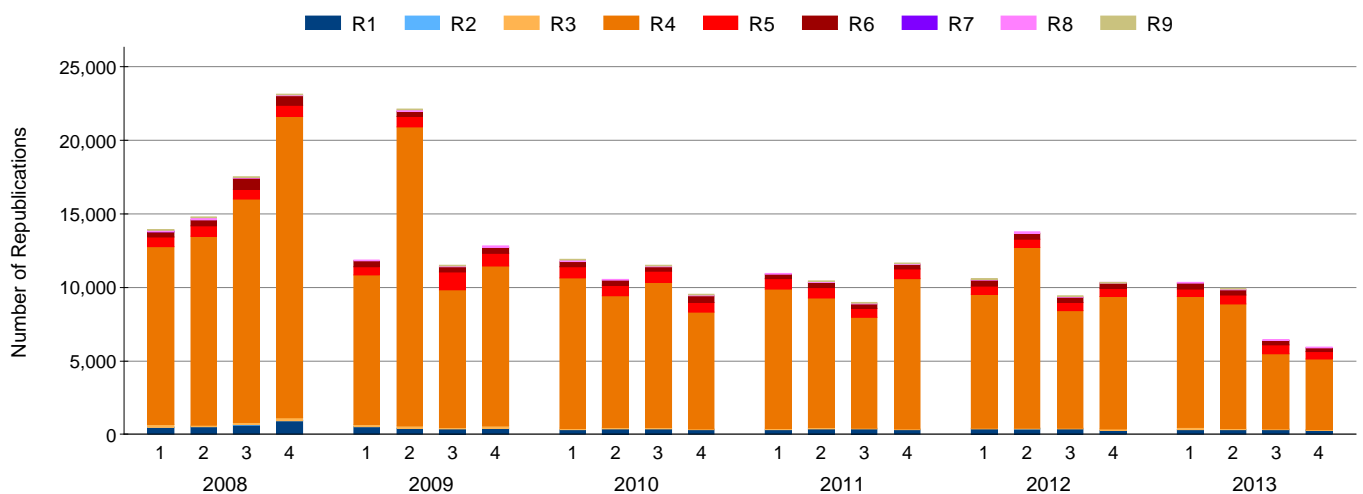
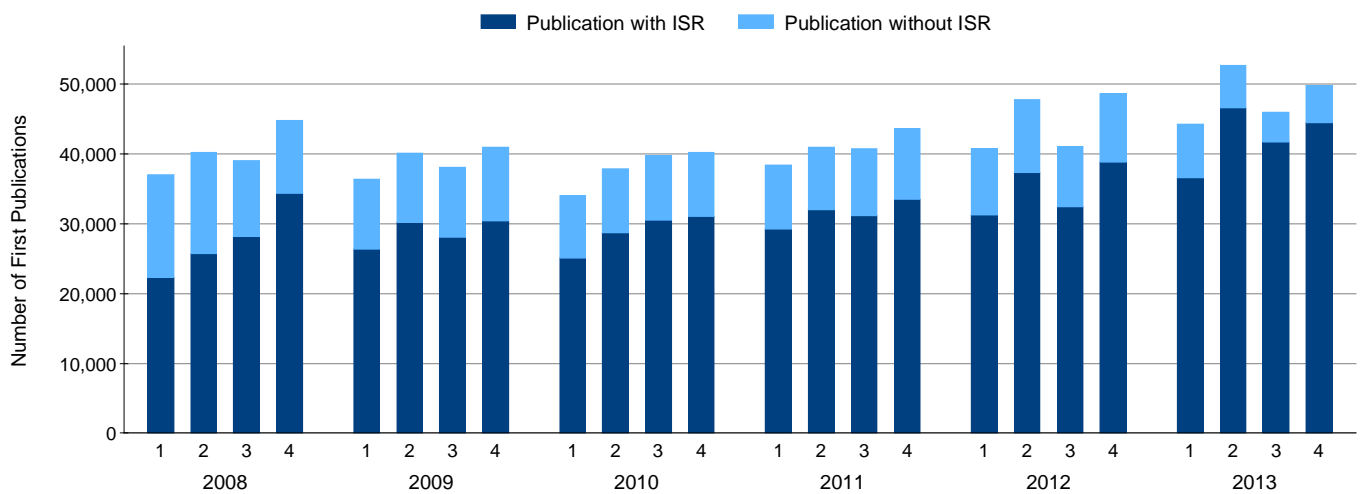
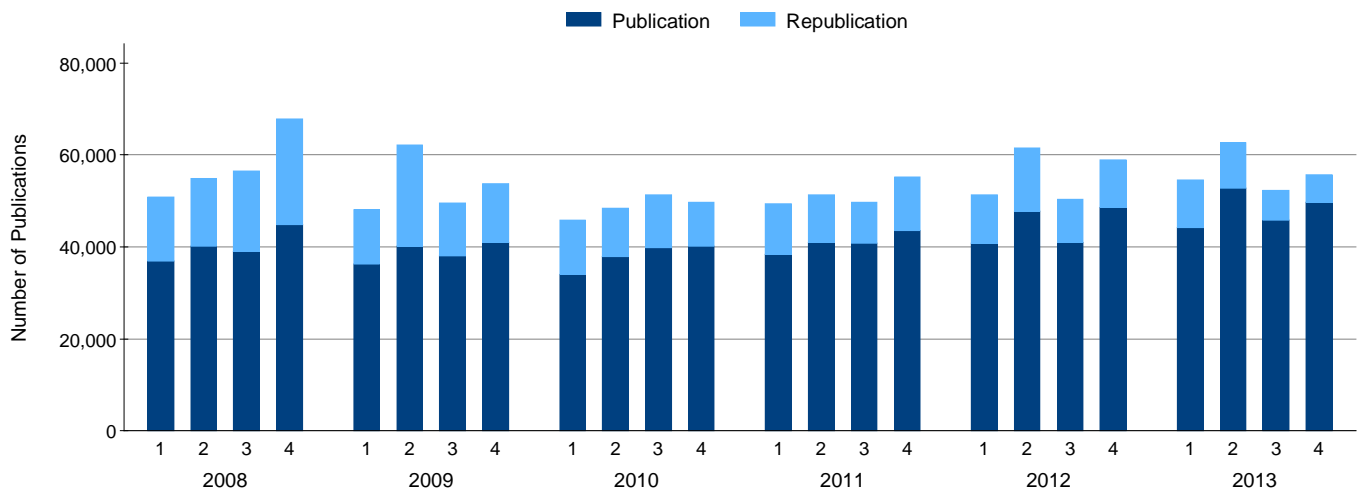
  

<b>IPEA: United States of America</b>																			
Year / Quarter / Delay	2010	2011	2012	2013 to date	2010	2010	2010	2011	2011	2011	2011	2012	2012	2012	2012	2013	2013	2013	2013
Total	2,878	3,460	2,628	2,644	722	725	677	811	962	652	1035	775	683	666	504	782	531	735	596
26 Months	228	407	427	678	68	67	49	97	99	83	128	80	109	103	135	145	167	197	169
27 Months	80	125	123	111	16	32	22	22	23	27	53	34	28	35	26	38	31	28	14
28 Months	82	150	116	89	18	30	12	49	27	26	48	42	20	39	15	36	31	11	11
29 Months	81	103	85	53	14	26	23	30	22	14	37	27	24	22	12	22	12	13	6
30 Months	75	101	69	58	23	21	15	21	27	15	38	30	10	13	16	24	15	12	7
31 Months	105	91	57	56	21	27	31	18	26	8	39	15	18	16	8	27	15	8	6
32 Months	71	65	74	52	9	29	14	17	13	8	27	17	24	23	10	14	19	10	9
> 32 Months	2,156	2,418	1,677	1,547	553	493	511	557	725	471	665	530	450	415	282	476	241	456	374

Source: WIPO Statistics Database, May 2014

Note: 2013 data are provisional and incomplete. Delay is calculated as the time difference between the priority date and the date on which the International Bureau received a copy of the IPER from IPEA.

**Figure 9: Publication and republication of PCT applications by the international bureau**



Source: WIPO Statistics Database, May 2014

Note: 2013 data are provisional and incomplete. Publication (republication) counts are based on the date of publication (republication) of the PCT application by the International Bureau. ISR (International Search Report).

## Number of applications published and republished by the international bureau

### Number of PCT applications published by the international bureau

Source: WIPO Statistics Database, May 2014

Note: Counts are based on the date of publication of the PCT application by the International Bureau.

Publication code / Year / Quarter	2010	2011	2012	2013	2010	2010	2010	2011	2011	2011	2011	2012	2012	2012	2012	2013	2013	2013	2013
	-	-	-	to date	2	3	4	1	2	3	4	1	2	3	4	1	2	3	4
<b>Total</b>	151,898	163,669	178,212	192,631	37,866	39,812	40,187	38,424	40,900	40,729	43,616	40,747	47,801	41,027	48,637	44,273	52,702	45,905	49,751
A1: Published with International Search Report	115,319	125,872	139,776	169,289	28,738	30,462	31,094	29,210	32,035	31,116	33,511	31,232	37,290	32,414	38,840	36,532	46,636	41,709	44,412
A2: Published without International Search Report	36,579	37,797	38,436	23,342	9,128	9,350	9,093	9,214	8,865	9,613	10,105	9,515	10,511	8,613	9,797	7,741	6,066	4,196	5,339

### Number of PCT applications republished by the international bureau

Source: WIPO Statistics Database, May 2014

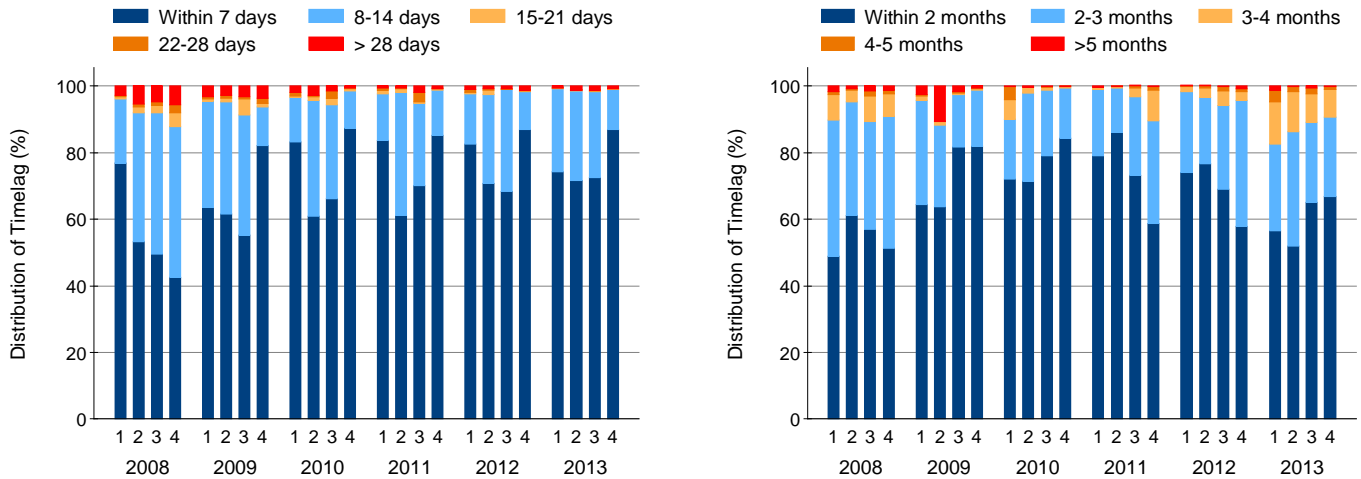
Note: Counts are based on the date of republication of the PCT application by the International Bureau.

Publication code / Year / Quarter	2010	2011	2012	2013	2010	2010	2010	2011	2011	2011	2011	2012	2012	2012	2012	2013	2013	2013	2013
	-	-	-	to date	2	3	4	1	2	3	4	1	2	3	4	1	2	3	4
<b>Total</b>	43,321	41,826	43,944	32,551	10,540	11,464	9,455	10,947	10,371	8,929	11,579	10,526	13,750	9,374	10,294	10,331	9,873	6,397	5,950
R1 - Late Publication of Article 19 Amendment	1,413	1,386	1,394	1,239	364	389	310	321	387	361	317	375	376	357	286	305	350	325	259
R2 - Supplementary ISR			1										1						
R3 - Revised ISR	361	318	276	370	92	99	79	86	74	83	75	67	69	74	66	196	65	43	66
R4 - Late Publication of ISR	36,865	36,006	38,346	27,265	8,973	9,819	7,896	9,470	8,806	7,526	10,204	9,101	12,237	7,966	9,042	8,872	8,474	5,131	4,788
R5 - Correction of an Entry in Section I	2,923	2,590	2,277	2,125	702	763	698	691	690	581	628	551	592	592	542	503	555	569	498
R6 - Corrected Pamphlet	1,495	1,316	1,423	1,395	360	340	425	329	365	319	303	364	398	342	319	396	396	309	294
R7 - Corrected Version of a Pamphlet Front Page																			
R8 - Later Publication Of A Declaration Under Article 17(2)(A)	254	205	222	156	49	51	41	50	48	56	51	66	77	41	38	59	32	20	45
R9 - Revised Version of ISR Translation	10	5	5	1		3	6		1	3	1	2		2	1		1		

Source: WIPO Statistics Database, May 2014

Note: 2013 data are provisional and incomplete. Publication (republication) counts are based on the date of publication (republication) of the PCT application by the International Bureau. ISR (International Search Report).

**Figure 10: Timeliness of the international bureau to publish and republish PCT applications**



Source: WIPO Statistics Database, May 2014

Note: 2013 data are provisional and incomplete. Publication delay is calculated as the time difference between the theoretical publication date (18 months from the priority date) and the actual publication date. Republication delay is calculated as the time difference between the date of the receipt of ISR at the IB and the date of republication by the International Bureau. ISR (International Search Report).

### Timeliness of the international bureau to publish PCT applications

#### Number of PCT applications published by the IB, by delay

Year / Quarter / Delay	2010	2011	2012	2013	2010	2010	2010	2011	2011	2011	2011	2011	2012	2012	2012	2012	2013	2013	2013	2013
				to date	2	3	4	1	2	3	4	1	2	3	4	1	2	3	4	
Total	151,898	163,669	178,212	192,631	37,866	39,812	40,187	38,424	40,900	40,729	43,616	40,747	47,801	41,027	48,637	44,273	52,702	45,905	49,751	
Within 7 days	112,768	122,832	137,764	147,087	23,085	26,294	35,092	32,160	24,946	28,557	37,169	33,619	33,854	28,044	42,247	32,850	37,692	33,282	43,263	
Between 8 - 14 days	33,428	36,438	36,874	43,046	13,101	11,302	4,498	5,377	15,120	10,054	5,887	6,115	12,662	12,507	5,590	11,050	14,188	11,850	5,958	
Between 15 - 21 days	1,576	1,241	1,053	276	436	711	248	398	517	153	173	249	633	68	103	52	94	67	63	
Between 22 - 28 days	1,540	1,516	633	227	203	933	68	255	59	1,147	55	314	195	76	48	45	64	71	47	
More than 28 days	2,586	1,642	1,888	1,995	1,041	572	281	234	258	818	332	450	457	332	649	276	664	635	420	

#### Distribution of the PCT applications published by the IB, by delay (%)

Year / Quarter / Delay	2010	2011	2012	2013	2010	2010	2010	2011	2011	2011	2011	2012	2012	2012	2012	2013	2013	2013	2013
				to date	2	3	4	1	2	3	4	1	2	3	4	1	2	3	4
Within 7 days	74.2	75.0	77.3	76.4	61.0	66.0	87.3	83.7	61.0	70.1	85.2	82.5	70.8	68.4	86.9	74.2	71.5	72.5	87.0
Between 8 - 14 days	22.0	22.3	20.7	22.3	34.6	28.4	11.2	14.0	37.0	24.7	13.5	15.0	26.5	30.5	11.5	25.0	26.9	25.8	12.0
Between 15 - 21 days	1.0	0.8	0.6	0.1	1.2	1.8	0.6	1.0	1.3	0.4	0.4	0.6	1.3	0.2	0.2	0.1	0.2	0.1	0.1
Between 22 - 28 days	1.0	0.9	0.4	0.1	0.5	2.3	0.2	0.7	0.1	2.8	0.1	0.8	0.4	0.2	0.1	0.1	0.1	0.1	0.2
More than 28 days	1.7	1.0	1.1	1.0	2.7	1.4	0.7	0.6	0.6	2.0	0.8	1.1	1.0	0.8	1.3	0.6	1.3	1.4	0.8

Source: WIPO Statistics Database, May 2014

Note: 2013 data are provisional and incomplete. Delay is calculated as the time difference between the theoretical publication date (18 months from the priority date) and the actual publication date.

### Timeliness of the international bureau to republish PCT applications with international search report (ISR)

#### Number of PCT applications republished by the IB with ISR, by delay

Year / Quarter / Delay	2010	2011	2012	2013	2010	2010	2010	2011	2011	2011	2011	2012	2012	2012	2012	2013	2013	2013	2013
				to date	2	3	4	1	2	3	4	1	2	3	4	1	2	3	4
Total	36,865	36,006	38,346	27,265	8,973	9,819	7,896	9,470	8,806	7,526	10,204	9,101	12,237	7,966	9,042	8,872	8,474	5,131	4,788
Within 2 months	28,139	26,549	26,816	15,938	6,403	7,759	6,656	7,484	7,566	5,508	5,991	6,730	9,373	5,491	5,222	5,005	4,407	3,333	3,193
Between 2 - 3 months	7,311	7,979	10,091	7,595	2,367	1,933	1,185	1,884	1,177	1,768	3,150	2,209	2,448	2,014	3,420	2,311	2,898	1,242	1,144
Between 3 - 4 months	904	1,245	1,062	3,000	161	94	36	63	40	207	935	150	342	336	234	1,138	1,027	439	396
Between 4 - 5 months	429	177	269	580	10	9	8	9	12	40	116	6	69	110	84	311	132	88	49
More than 5 months	82	56	108	152	32	24	11	30	11	3	12	6	5	15	82	107	10	29	6

#### Distribution of IB republication with ISR, by delay (%)

Year / Quarter / Delay	2010	2011	2012	2013	2010	2010	2010	2011	2011	2011	2011	2012	2012	2012	2012	2013	2013	2013	2013
				to date	2	3	4	1	2	3	4	1	2	3	4	1	2	3	4
Within 2 months	76.3	73.7	69.9	58.5	71.4	79.0	84.3	79.0	85.9	73.2	58.7	73.9	76.6	68.9	57.8	56.4	52.0	65.0	66.7
Between 2 - 3 months	19.8	22.2	26.3	27.9	26.4	19.7	15.0	19.9	13.4	23.5	30.9	24.3	20.0	25.3	37.8	26.0	34.2	24.2	23.9
Between 3 - 4 months	2.5	3.5	2.8	11.0	1.8	1.0	0.5	0.7	0.5	2.8	9.2	1.6	2.8	4.2	2.6	12.8	12.1	8.6	8.3
Between 4 - 5 months	1.2	0.5	0.7	2.1	0.1	0.1	0.1	0.1	0.1	0.5	1.1	0.1	0.6	1.4	0.9	3.5	1.6	1.7	1.0
More than 5 months	0.2	0.2	0.3	0.6	0.4	0.2	0.1	0.3	0.1	0.0	0.1	0.1	0.0	0.2	0.9	1.2	0.1	0.6	0.1

Source: WIPO Statistics Database, May 2014

Note: 2013 data are provisional and incomplete. Delay is calculated as the time difference between the date of receipt of ISR at the IB and the date of republication by the IB.

**World Intellectual Property  
Organization**

**Address:**

34, chemin des Colombettes  
P.O. Box 18  
CH-1211 Geneva 20  
Switzerland

**Telephone:** +41 22 338 91 11

**Fax:** +41 22 733 54 28

**Website:** [www.wipo.int](http://www.wipo.int)

**Contact Information  
Economics and Statistics Division**

**Website:** [www.wipo.int/ipstats](http://www.wipo.int/ipstats)

**e-mail:** [ipstats.mail@wipo.int](mailto:ipstats.mail@wipo.int)