



PCT

THE INTERNATIONAL PATENT SYSTEM

**>> MONTHLY STATISTICS
REPORT**

January **2014**

PCT MONTHLY STATISTICS

JANUARY 2014

TABLE OF CONTENTS

Foreword

Figure 1: Trends in PCT Filings

Figure 2: PCT Filings by Medium of Filing

Figure 3: Trends in PCT Filings: Top 12 Countries of Origin

Table 1a: Number of PCT Filings by Country of Origin

Table 1b: Share of Country in Total PCT Filings by Country of Origin (%)

Table 2a: Number of PCT Filings by Receiving Office (RO)

Table 2b: Receiving Office Share in Total PCT Filings (%)

Table 3a: Number of Paper Filings by Receiving Office (RO)

Table 3b: Paper Filings as a Percentage of Total Filings by Receiving Office (%)

Table 4a: Number of EASY Filings by Receiving Office (RO)

Table 4b: EASY Filings as a Percentage of Total Filings by Receiving Office (%)

Table 5: Electronic Filings (PDF, XML and EFS-Web) by Receiving Office (RO)

FOREWORD

The aim of this document is to provide users with the latest available PCT filing (i.e. international patent applications filed using the PCT procedure) statistics. It includes two types of statistics namely, PCT filing statistics and medium of filing statistics (i.e. method used to file international patent applications). This document includes PCT filing statistics for the most recent months (plus year total). All the data used in this document, along with longer time series, are available for download from the PCT statistics website:

www.wipo.int/ipstats/en/statistics/pct

Methodological Information

The Patent Cooperation Treaty (PCT) is an international treaty administered by the World Intellectual Property Organization (WIPO). The PCT makes it possible to seek patent protection for an invention simultaneously in a large number of countries by filing a single "international" patent application. The PCT procedure consists of an international phase and a national/regional phase. The decision on whether to confer patent rights remains in the hands of the national and/or regional patent offices.

Statistics reported in this document are based on:

- The international phase of the PCT procedure (i.e. this does not include national/regional phase statistics).
- Counts are based on country of origin, which is the country of the residence of the first-named applicant or assignee. In some cases (e.g. the United States of America) the country of residence of the inventor (instead of applicant) is used to determine country of origin.
- The receiving Office is the patent office where the international patent application is filed. The receiving Office could be a national office, or a regional office, or the International Bureau.
- Counts are based on the international filing date (i.e. the date on which the international application is filed with a receiving Office).
- The PCT statistics for the most recent months are provisional and incomplete.

Useful links

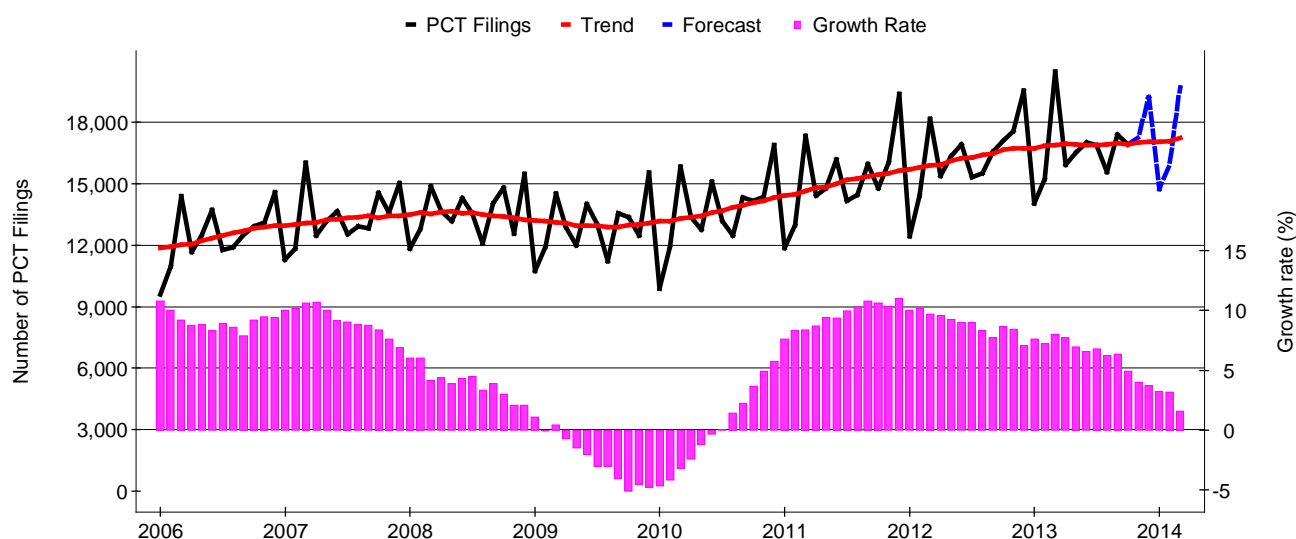
PCT Statistics: PCT monthly, quarterly and yearly statistics - www.wipo.int/ipstats/en/statistics/pct

WIPO Industrial Property Statistics: Statistics on patents, utility models, PCT, trademarks, industrial designs, plant varieties and microorganisms - www.wipo.int/ipstats/en/

PATENTSCOPE[®]: WIPO's gateway to patent services and activities – www.wipo.int/patentscope/en/

Contact: ipstats.mail@wipo.int

Figure 1: Trends in PCT Filings



Number of PCT Filings

Year	Month												Total
	1	2	3	4	5	6	7	8	9	10	11	12	
2006	9,589	10,959	14,393	11,677	12,465	13,722	11,771	11,901	12,524	12,933	13,117	14,593	149,644
2007	11,301	11,841	16,026	12,484	13,195	13,650	12,529	12,913	12,824	14,544	13,584	15,039	159,930
2008	11,828	12,794	14,877	13,648	13,192	14,311	13,571	12,089	14,057	14,813	12,583	15,479	163,242
2009	10,741	11,950	14,538	12,895	12,001	14,020	13,034	11,241	13,567	13,376	12,493	15,550	155,406
2010	9,898	11,923	15,843	13,384	12,763	15,091	13,165	12,492	14,349	14,175	14,379	16,878	164,340
2011	11,858	13,003	17,344	14,422	14,766	16,183	14,188	14,461	15,960	14,793	16,072	19,383	182,433
2012	12,433	14,416	18,172	15,377	16,347	16,911	15,325	15,501	16,570	17,123	17,578	19,561	195,314
2013 (to date)	14,037	15,240	20,484	15,942	16,551	17,011	16,889	15,582	17,394	16,923	n.a.	n.a.	166,053

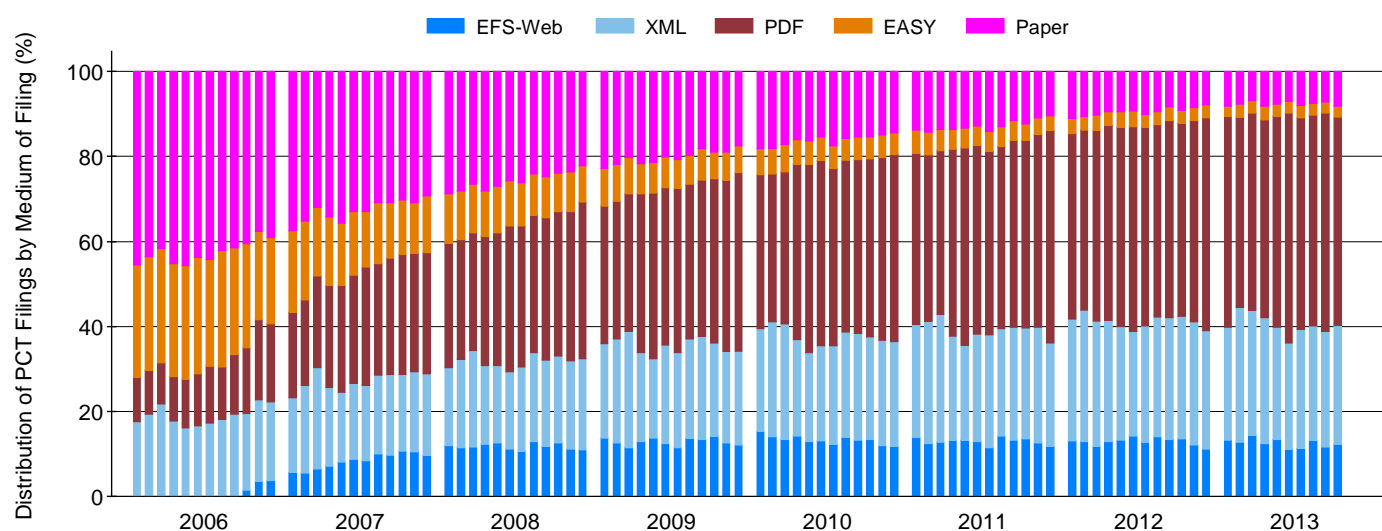
Annualized Growth Rate of PCT Filings (based on trend line)

Year	Month												Total
	1	2	3	4	5	6	7	8	9	10	11	12	
2006	10.8	10.0	9.2	8.8	8.8	8.3	8.9	8.6	7.9	9.2	9.5	9.4	9.4
2007	10.0	10.2	10.6	10.7	10.0	9.2	9.0	8.8	8.8	8.4	7.6	6.9	6.9
2008	6.0	6.0	4.2	4.4	3.9	4.3	4.5	3.3	3.9	3.0	2.1	2.1	2.1
2009	1.1	-0.1	0.4	-0.7	-1.5	-2.1	-3.0	-3.0	-4.1	-5.1	-4.6	-4.8	-4.8
2010	-4.7	-4.2	-3.2	-2.4	-1.2	-0.4	0.1	1.4	2.2	3.7	4.9	5.7	5.7
2011	7.6	8.3	8.4	8.7	9.4	9.4	9.9	10.3	10.8	10.6	10.4	11.0	11.0
2012	10.0	10.2	9.7	9.6	9.2	9.0	9.0	8.3	7.7	8.6	8.5	7.1	7.1
2013 (to date)	7.6	7.2	8.0	7.7	6.9	6.6	6.8	6.2	6.3	4.9	n.a.	n.a.	n.a.

Source: WIPO Statistics Database, January 2014

Note: 2013 data are provisional and incomplete. The growth rate is the annualized growth rate based on the trend line. Counts are based on the international filings date.

Figure 2: PCT Filings by Medium of Filing



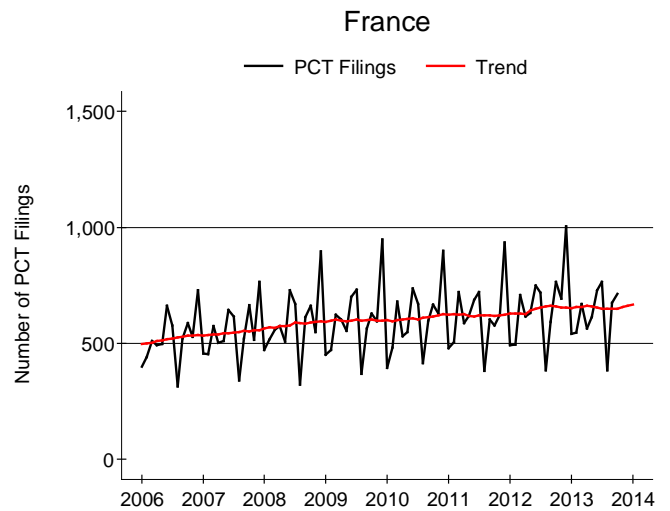
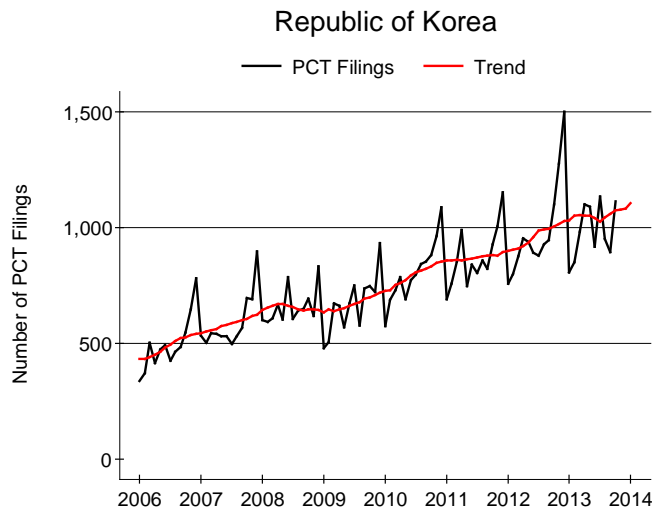
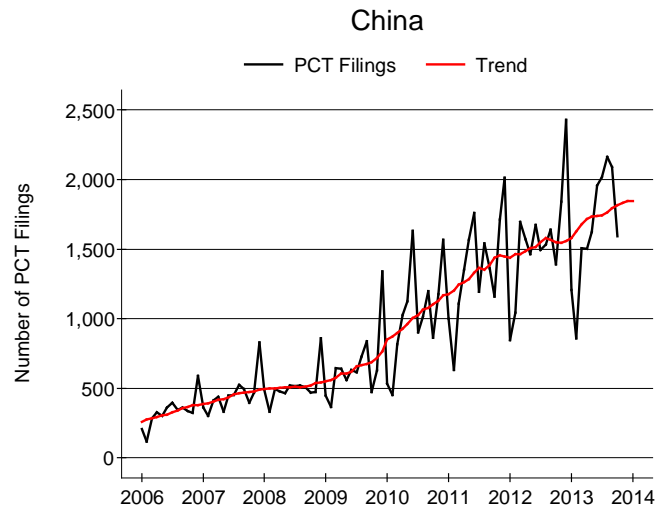
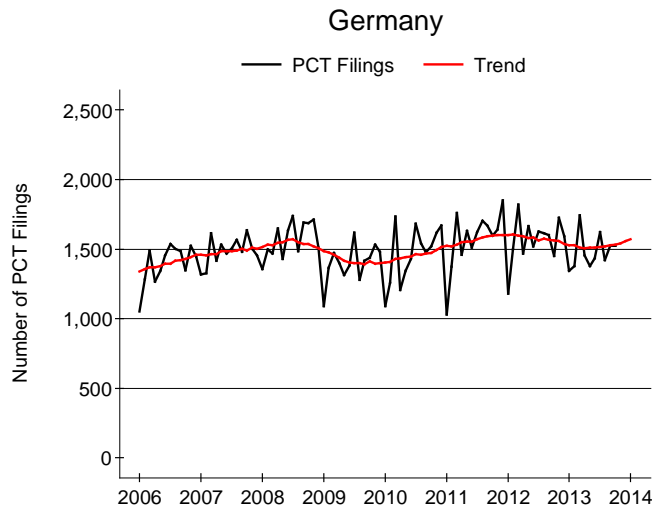
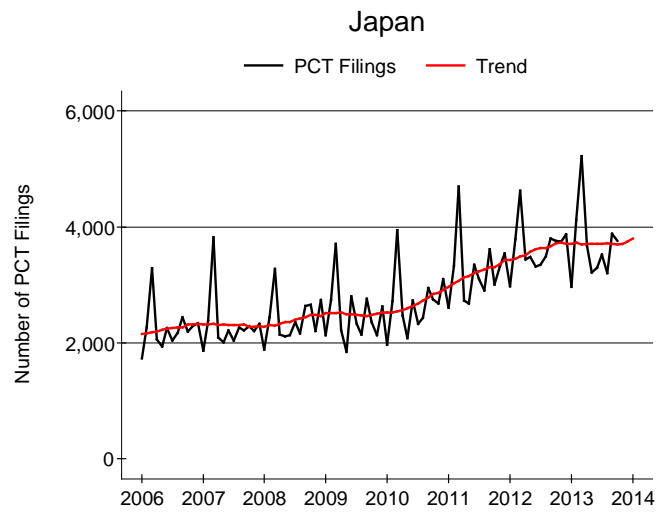
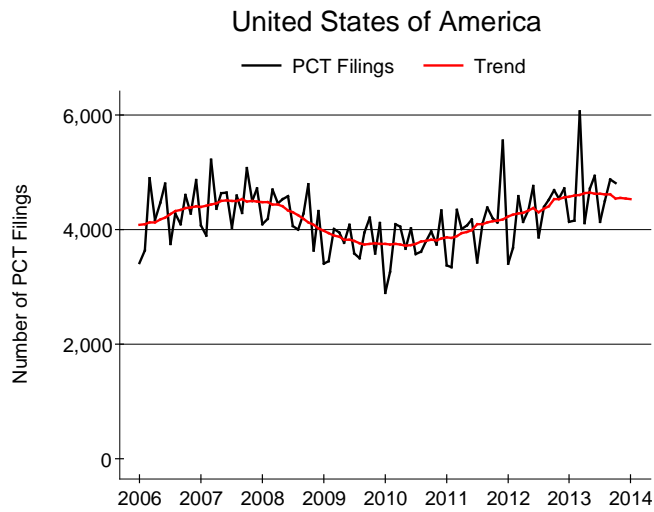
		Number of PCT Filings by Medium of Filing						Share of PCT filings by Medium of Filing (%)				
Year	Month	Total	Paper	EASY	PDF	XML	EFS-Web	Paper	EASY	PDF	XML	EFS-Web
2009	-	155,406	31,234	11,315	57,551	35,372	19,934	20.1	7.3	37.0	22.8	12.8
2010	-	164,340	26,520	9,102	67,044	39,935	21,739	16.1	5.5	40.8	24.3	13.2
2011	-	182,433	23,220	8,194	79,805	47,615	23,599	12.7	4.5	43.7	26.1	12.9
2012	-	195,314	18,340	6,451	90,319	55,055	25,149	9.4	3.3	46.2	28.2	12.9
2013	to date	166,053	12,700	4,664	81,441	46,271	20,977	7.6	2.8	49.0	27.9	12.6

Year	Month	Total	Paper	EASY	PDF	XML	EFS-Web	Paper	EASY	PDF	XML	EFS-Web
2011	1	11,858	1,641	652	4,777	3,145	1,643	13.8	5.5	40.3	26.5	13.9
2011	2	13,003	1,854	689	5,094	3,744	1,622	14.3	5.3	39.2	28.8	12.5
2011	3	17,344	2,369	873	6,674	5,223	2,205	13.7	5.0	38.5	30.1	12.7
2011	4	14,422	1,970	666	6,335	3,532	1,919	13.7	4.6	43.9	24.5	13.3
2011	5	14,766	1,963	687	6,846	3,307	1,963	13.3	4.7	46.4	22.4	13.3
2011	6	16,183	2,078	729	7,206	4,069	2,101	12.8	4.5	44.5	25.1	13.0
2011	7	14,188	2,010	649	6,122	3,770	1,637	14.2	4.6	43.1	26.6	11.5
2011	8	14,461	1,877	681	6,199	3,643	2,061	13.0	4.7	42.9	25.2	14.3
2011	9	15,960	1,853	727	7,016	4,252	2,112	11.6	4.6	44.0	26.6	13.2
2011	10	14,793	1,821	581	6,530	3,851	2,010	12.3	3.9	44.1	26.0	13.6
2011	11	16,072	1,751	622	7,303	4,362	2,034	10.9	3.9	45.4	27.1	12.7
2011	12	19,383	2,033	638	9,703	4,717	2,292	10.5	3.3	50.1	24.3	11.8
2012	1	12,433	1,377	441	5,433	3,561	1,621	11.1	3.5	43.7	28.6	13.0
2012	2	14,416	1,525	477	6,089	4,468	1,857	10.6	3.3	42.2	31.0	12.9
2012	3	18,172	1,859	657	8,162	5,348	2,146	10.2	3.6	44.9	29.4	11.8
2012	4	15,377	1,450	505	7,061	4,368	1,993	9.4	3.3	45.9	28.4	13.0
2012	5	16,347	1,557	606	7,662	4,367	2,155	9.5	3.7	46.9	26.7	13.2
2012	6	16,911	1,576	616	8,163	4,163	2,393	9.3	3.6	48.3	24.6	14.2
2012	7	15,325	1,543	473	7,160	4,184	1,965	10.1	3.1	46.7	27.3	12.8
2012	8	15,501	1,460	490	6,997	4,374	2,180	9.4	3.2	45.1	28.2	14.1
2012	9	16,570	1,381	545	7,676	4,741	2,227	8.3	3.3	46.3	28.6	13.4
2012	10	17,123	1,576	523	7,768	4,945	2,311	9.2	3.1	45.4	28.9	13.5
2012	11	17,578	1,501	530	8,336	5,081	2,130	8.5	3.0	47.4	28.9	12.1
2012	12	19,561	1,535	588	9,812	5,455	2,171	7.8	3.0	50.2	27.9	11.1
2013	1	14,037	1,146	351	6,960	3,718	1,862	8.2	2.5	49.6	26.5	13.3
2013	2	15,240	1,178	463	6,819	4,825	1,955	7.7	3.0	44.7	31.7	12.8
2013	3	20,484	1,413	601	9,482	6,028	2,960	6.9	2.9	46.3	29.4	14.5
2013	4	15,942	1,317	502	7,412	4,733	1,978	8.3	3.1	46.5	29.7	12.4
2013	5	16,551	1,274	492	8,197	4,365	2,223	7.7	3.0	49.5	26.4	13.4
2013	6	17,011	1,194	465	9,215	4,241	1,896	7.0	2.7	54.2	24.9	11.1
2013	7	16,889	1,362	488	8,410	4,704	1,925	8.1	2.9	49.8	27.9	11.4
2013	8	15,582	1,179	410	7,730	4,188	2,075	7.6	2.6	49.6	26.9	13.3
2013	9	17,394	1,256	461	8,924	4,738	2,015	7.2	2.7	51.3	27.2	11.6
2013	10	16,923	1,381	431	8,292	4,731	2,088	8.2	2.5	49.0	28.0	12.3

Source: WIPO Statistics Database, January 2014

Note: 2013 data are provisional and incomplete. Counts are based on the international filings date. EASY (Electronic Application System) and EFS-Web (Electronic Filing System).

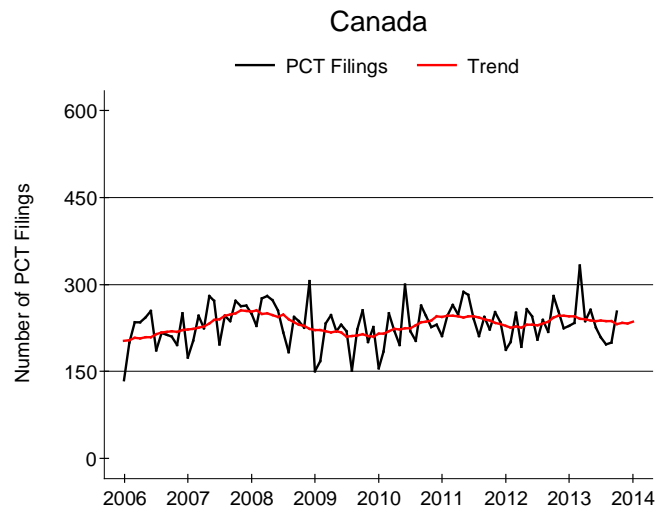
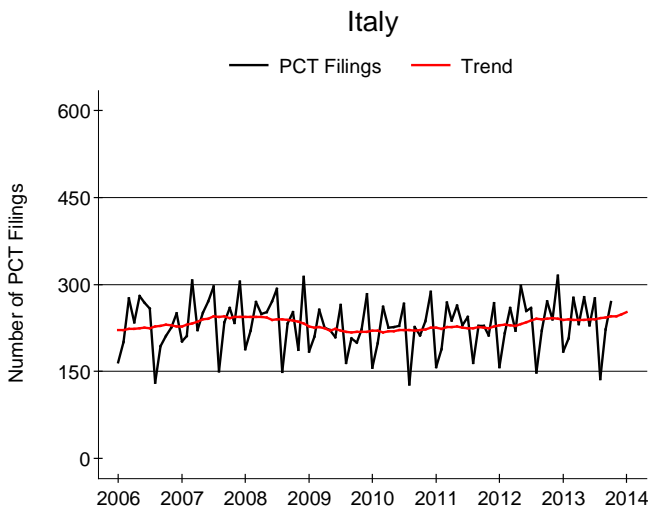
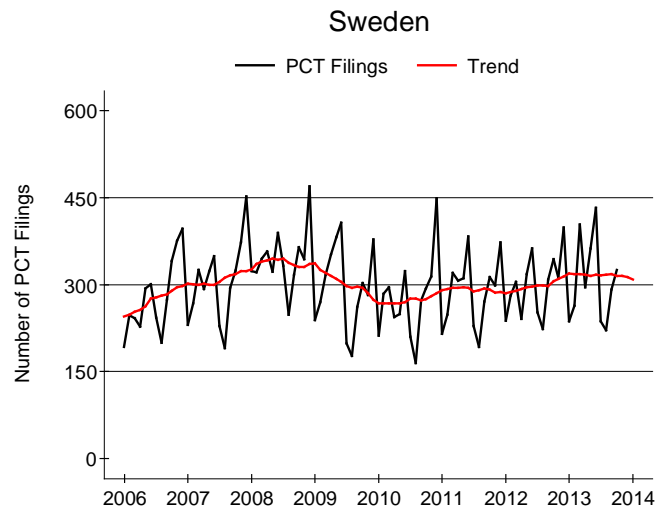
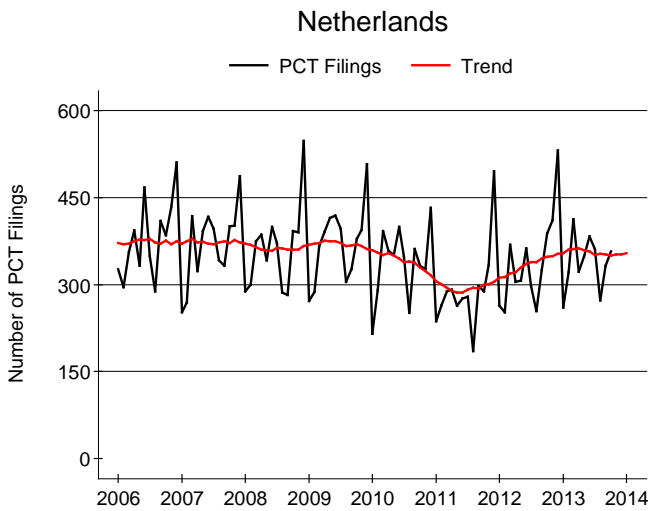
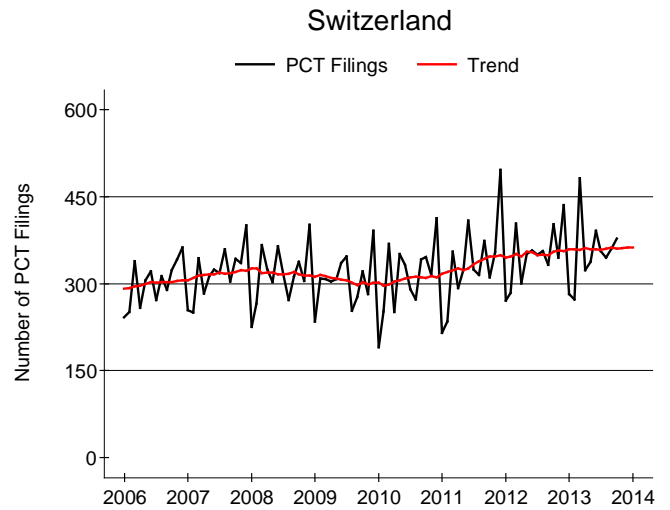
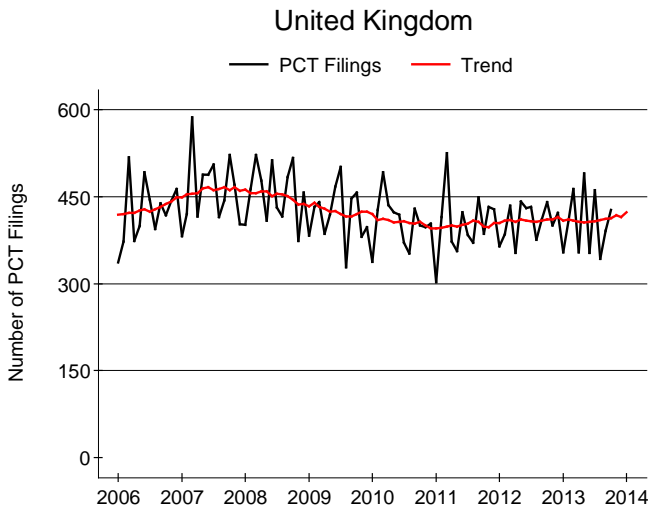
Figure 3: Trends in PCT Filings: Top 12 Countries of Origin



Source: WIPO Statistics Database, January 2014

Note: Counts are based on the international filing date and the country of residence of the first named applicants. Trend line is based on moving average (MA) using six lagged terms, current observation and 5 forward terms.

Figure 3: Trends in PCT Filings: Top 12 Countries of Origin



Source: WIPO Statistics Database, January 2014

Note: Counts are based on the international filing date and the country of residence of the first named applicants. Trend line is based on moving average (MA) using six lagged terms, current observation and 5 forward terms.

Table 2a: Number of PCT Filings by Receiving Office (RO)

RO_Name Year / Month	2009	2010	2011	2012	2013 to date	2012 10	2012 11	2012 12	2013 1	2013 2	2013 3	2013 4	2013 5	2013 6	2013 7	2013 8	2013 9	2013 10
Total	155,406	164,340	182,433	195,314	166,053	17,123	17,578	19,561	14,037	15,240	20,484	15,942	16,551	17,011	16,889	15,582	17,394	16,923
African Intellectual Property Organization	3	2	3		2													2
African Regional Intellectual Property Organization	1		2		1													1
Albania		1		1														
Algeria	7	1	3	4	5	1				1	2	1		1				
Armenia	2	4	4	7	3		1	1	1		2							
Australia	1,710	1,749	1,690	1,607	1,253	139	135	141	83	105	144	111	131	139	126	142	133	139
Austria	492	491	566	535	378	55	42	48	39	44	41	52	24	36	33	32	45	32
Azerbaijan	9	2	10	4	3			1			2		1					
Belarus	11	12	8	7	8		2	2			2		2	1		1	2	
Belgium	59	88	72	53	58	3	3	5	6	4	5	8	3	9	5	5	5	8
Bosnia and Herzegovina	7	7	6	9	6	1	1				2		1	1	1		1	
Brazil	442	448	519	565	458	41	66	65	35	24	43	40	54	40	48	75	49	50
Brunei Darussalam				2	1													
Bulgaria	21	27	28	31	45	2	3	1	1	4	5	8	6	6	9	3	2	1
Canada	1,895	2,058	2,193	2,135	1,741	185	191	172	165	173	229	194	194	160	152	152	150	172
Chile	28	60	84	79	80	10	5	9	5	11	3	7	6	6	11	10	9	12
China	8,000	12,917	17,471	19,924	17,670	1,514	1,936	2,616	1,348	884	1,676	1,619	1,730	2,089	2,127	2,298	2,201	1,698
Colombia			2	4	9			1					1	2		2	3	1
Costa Rica	1	2	2	4	1		1				1							
Croatia	34	39	45	26	31	2	3	1		2	2	4	5	5	6	1	2	4
Cuba	9	5	9	9	7	1	1	3		1	1			1	1	1	1	2
Cyprus	1			2														
Czech Republic	164	133	126	140	141	13	11	20	9	16	21	13	11	9	9	13	19	21
Democratic People's Republic of Korea	1	3	4	3	1				1									
Denmark	602	536	678	644	420	48	47	76	41	29	44	37	49	59	42	29	39	51
Dominican Republic	1	3	6	2	2	1						2						
Ecuador	3	2	3	11	1													1
Egypt	33	47	29	36	25		5	1		3	2	4	1	5	3	1	3	3
El Salvador	3		1															
Estonia	17	18	9	6	5	1		1		2	2		1					
Eurasian Patent Organization	11	10	14	15	14	1	1	4	1	1			1	1	2	2		3
European Patent Office	27,360	28,900	30,893	32,429	26,050	2,783	2,938	3,351	2,266	2,434	3,091	2,535	2,591	2,734	2,737	2,239	2,650	2,773
Finland	1,157	1,182	1,230	1,356	1,076	129	139	117	112	122	133	138	116	127	63	55	115	95
France	3,771	3,441	3,498	3,266	2,613	337	262	340	213	231	270	246	276	286	336	144	321	290
Georgia	4	5	5	5	7		2	1		1		1	2		3			
Germany	1,954	1,762	1,699	1,424	1,153	111	121	103	89	93	94	99	93	85	166	145	130	159
Ghana				1	1			1							1			
Greece	69	57	58	54	51	6	3	3	8	3	5	10	2	10	3	3	2	5
Guatemala	2	2			1					1								
Hungary	112	150	131	145	102	18	9	19	8	12	8	8	14	10	18	5	12	7
Iceland	17	26	18	24	11	2	2	2	1		1	2	2	1	2			2
India	758	854	898	859	608	61	61	84	64	50	94	78	57	54	73	43	42	53
Indonesia	2	9	8	9	7	1		3		1	1	2			1		2	
International Bureau	8,688	8,679	8,772	9,776	8,187	984	965	1,045	804	770	982	786	934	843	957	708	822	581
Ireland	91	79	67	54	21	3	5	3	3	3	3	3	2		1	2	3	1

Source: WIPO Statistics Database, January 2014

Note: 2013 data are provisional and incomplete. Counts are based on the international filing date.

Table 2a: Number of PCT Filings by Receiving Office (RO)

RO_Name Year / Month	2009	2010	2011	2012	2013 to date	2012 10	2012 11	2012 12	2013 1	2013 2	2013 3	2013 4	2013 5	2013 6	2013 7	2013 8	2013 9	2013 10
Total	155,406	164,340	182,433	195,314	166,053	17,123	17,578	19,561	14,037	15,240	20,484	15,942	16,551	17,011	16,889	15,582	17,394	16,923
Israel	1,238	1,098	1,060	967	977	51	77	91	108	104	120	73	114	92	105	86	78	97
Italy	603	527	424	407	296	35	28	45	29	32	35	31	27	24	33	18	32	35
Japan	29,291	31,523	37,972	42,787	36,158	3,715	3,678	3,800	2,869	4,062	5,119	3,600	3,145	3,261	3,456	3,138	3,829	3,679
Kazakhstan	21	18	22	15	13	3	3	3	1	1	3		3		1	2	1	1
Kenya	3	2	4	2	3		1		1				1	1				
Kyrgyzstan		1		1														
Latvia	11	17	10	22	12	3	3	2	1	3	1				1	1	4	1
Libya	1																	
Lithuania	17	3	14	10	17	3	1	2		4	3		3	1	2	2		2
Malaysia	224	333	251	294	185	8	23	6	20	23	21	25	14	17	19	11	26	9
Mexico	146	164	167	138	129	12	14	17	19	7	11	18	16	6	17	9	13	13
Morocco	22	22	18	35	28	10	5	4	1	1	1	6	3	8	1	2	2	3
Netherlands	1,102	1,078	996	1,020	804	82	96	97	53	91	113	89	78	85	104	60	70	61
New Zealand	303	265	277	242	191	27	22	22	6	19	29	21	16	21	21	18	29	11
Nicaragua					1													
Norway	449	490	355	325	231	33	30	21	22	25	24	23	24	24	23	19	22	25
Panama					1													
Peru			6	11	8		4	1			2	1			1	4		
Philippines	21	9	20	15	18	1	1		6	1	3	1	3	2	1	1		
Poland	151	166	207	171	163	25	10	9	10	23	19	18	11	18	19	13	18	14
Portugal	82	67	48	54	62	5	3	8	5	6	8	6	9	6	12	2	2	6
Republic of Korea	8,025	9,639	10,413	11,869	9,812	1,108	1,272	1,515	814	871	979	1,103	1,096	920	1,137	952	895	1,045
Republic of Moldova	2	1	3	3	1				1									
Romania	24	14	23	25	2	1	1			1	1							
Russian Federation	756	813	1,050	1,129	815	93	108	139	70	91	101	108	70	105	74	57	63	76
San Marino	2	1																
Serbia	25	16	17	17	18	1		1	1	3		2	4	2	1	4		1
Singapore	500	491	456	494	470	47	42	41	41	41	43	45	57	44	51	56	47	45
Slovakia	21	27	49	28	24	3	1			2	2	1			1	1	7	6
Slovenia	68	76	80	67	64	6	2	6	6	4	5	8	11	8	5	3	6	8
South Africa	109	73	93	93	74	23	10	3	3	5	11	11	9	6	14	10	2	3
Spain	1,243	1,411	1,301	1,249	993	111	103	109	73	110	110	83	104	113	156	52	83	109
Sweden	2,046	1,775	1,845	1,713	1,435	168	167	196	96	119	183	136	189	209	124	93	127	159
Switzerland	412	331	312	281	189	18	19	17	20	12	23	19	17	26	19	18	20	15
Syrian Arab Republic	9	12	5	1	1								1					
T F Y R of Macedonia	2	2		2	1													1
Thailand	4	49	51	54	60	1	7	3	4	5	5	8	2	4	4	10	11	7
Trinidad and Tobago	1	1		1														
Tunisia	2	7	6	5	1	1		1						1				
Turkey	160	264	279	241	310	24	21	42	55	28	23	26	46	31	45	29	18	9
Uganda					1													1
Ukraine	72	96	131	121	122	9	8	16	16	6	12	14	6	10	21	8	21	8
United Kingdom	4,627	4,411	4,226	4,129	3,234	357	320	341	254	330	393	299	406	299	355	260	295	343
United States of America	46,055	45,228	49,366	51,999	46,860	4,685	4,537	4,761	4,129	4,183	6,172	4,152	4,750	4,945	4,125	4,538	4,903	4,963
Uzbekistan		3		2	1								1					
Viet Nam	4	5	11	8	12			2				5	1	1	1			4
Zambia			1															

Source: WIPO Statistics Database, January 2014

Note: 2013 data are provisional and incomplete. Counts are based on the international filing date.

Table 2b: Receiving Office Share in Total PCT Filings (%)

RO_Name Year / Month	2009 -	2010 -	2011 -	2012 -	2013 to date	2012 10	2012 11	2012 12	2013 1	2013 2	2013 3	2013 4	2013 5	2013 6	2013 7	2013 8	2013 9	2013 10
African Intellectual Property Organization	0.00	0.00	0.00		0.00													0.01
African Regional Intellectual Property Organization	0.00		0.00		0.00													0.01
Albania		0.00		0.00														
Algeria	0.00	0.00	0.00	0.00	0.00	0.01				0.01	0.01	0.01		0.01				
Armenia	0.00	0.00	0.00	0.00	0.00		0.01	0.01	0.01		0.01							
Australia	1.10	1.06	0.93	0.82	0.75	0.81	0.77	0.72	0.59	0.69	0.70	0.70	0.79	0.82	0.75	0.91	0.76	0.82
Austria	0.32	0.30	0.31	0.27	0.23	0.32	0.24	0.25	0.28	0.29	0.20	0.33	0.15	0.21	0.20	0.21	0.26	0.19
Azerbaijan	0.01	0.00	0.01	0.00	0.00			0.01			0.01		0.01					
Belarus	0.01	0.01	0.00	0.00	0.00		0.01	0.01			0.01		0.01	0.01		0.01	0.01	
Belgium	0.04	0.05	0.04	0.03	0.03	0.02	0.02	0.03	0.04	0.03	0.02	0.05	0.02	0.05	0.03	0.03	0.03	0.05
Bosnia and Herzegovina	0.00	0.00	0.00	0.00	0.00	0.01	0.01			0.01			0.01	0.01	0.01		0.01	
Brazil	0.28	0.27	0.28	0.29	0.28	0.24	0.38	0.33	0.25	0.16	0.21	0.25	0.33	0.24	0.28	0.48	0.28	0.30
Brunei Darussalam				0.00		0.01												
Bulgaria	0.01	0.02	0.02	0.02	0.03	0.01	0.02	0.01	0.01	0.03	0.02	0.05	0.04	0.04	0.05	0.02	0.01	0.01
Canada	1.22	1.25	1.20	1.09	1.05	1.08	1.09	0.88	1.18	1.14	1.12	1.22	1.17	0.94	0.90	0.98	0.86	1.02
Chile	0.02	0.04	0.05	0.04	0.05	0.06	0.03	0.05	0.04	0.07	0.01	0.04	0.04	0.04	0.07	0.06	0.05	0.07
China	5.15	7.86	9.58	10.20	10.64	8.84	11.01	13.37	9.60	5.80	8.18	10.16	10.45	12.28	12.59	14.75	12.65	10.03
Colombia			0.00	0.00	0.01			0.01					0.01	0.01		0.01	0.02	0.01
Costa Rica	0.00	0.00	0.00	0.00	0.00		0.01				0.00							
Croatia	0.02	0.02	0.02	0.01	0.02	0.01	0.02	0.01		0.01	0.01	0.03	0.03	0.03	0.04	0.01	0.01	0.02
Cuba	0.01	0.00	0.00	0.00	0.00	0.01	0.01	0.02		0.01	0.00			0.01		0.01	0.01	0.01
Cyprus	0.00			0.00														
Czech Republic	0.11	0.08	0.07	0.07	0.08	0.08	0.06	0.10	0.06	0.11	0.10	0.08	0.07	0.05	0.05	0.08	0.11	0.12
Democratic People's Republic of Korea	0.00	0.00	0.00	0.00	0.00				0.01									
Denmark	0.39	0.33	0.37	0.33	0.25	0.28	0.27	0.39	0.29	0.19	0.21	0.23	0.30	0.35	0.25	0.19	0.22	0.30
Dominican Republic	0.00	0.00	0.00	0.00	0.00	0.01						0.01						
Ecuador	0.00	0.00	0.00	0.01	0.00													0.01
Egypt	0.02	0.03	0.02	0.02	0.02		0.03	0.01		0.02	0.01	0.03	0.01	0.03	0.02	0.01	0.02	0.02
El Salvador	0.00		0.00															
Estonia	0.01	0.01	0.00	0.00	0.00	0.01		0.01		0.01	0.01		0.01					
Eurasian Patent Organization	0.01	0.01	0.01	0.01	0.01	0.01	0.01	0.02	0.01	0.01		0.01	0.01	0.01	0.01		0.02	0.02
European Patent Office	17.61	17.59	16.93	16.60	15.69	16.25	16.71	17.13	16.14	15.97	15.09	15.90	15.65	16.07	16.21	14.37	15.24	16.39
Finland	0.74	0.72	0.67	0.69	0.65	0.75	0.79	0.60	0.80	0.80	0.65	0.87	0.70	0.75	0.37	0.35	0.66	0.56
France	2.43	2.09	1.92	1.67	1.57	1.97	1.49	1.74	1.52	1.52	1.32	1.54	1.67	1.68	1.99	0.92	1.85	1.71
Georgia	0.00	0.00	0.00	0.00	0.00		0.01	0.01		0.01		0.01	0.01		0.02			
Germany	1.26	1.07	0.93	0.73	0.69	0.65	0.69	0.53	0.63	0.61	0.46	0.62	0.56	0.50	0.98	0.93	0.75	0.94
Ghana				0.00	0.00			0.01							0.01			
Greece	0.04	0.03	0.03	0.03	0.03	0.04	0.02	0.02	0.06	0.02	0.02	0.06	0.01	0.06	0.02	0.02	0.01	0.03
Guatemala	0.00	0.00			0.00					0.01								
Hungary	0.07	0.09	0.07	0.07	0.06	0.11	0.05	0.10	0.06	0.08	0.04	0.05	0.08	0.06	0.11	0.03	0.07	0.04
Iceland	0.01	0.02	0.01	0.01	0.01	0.01	0.01	0.01	0.01		0.00	0.01	0.01	0.01	0.01			0.01
India	0.49	0.52	0.49	0.44	0.37	0.36	0.35	0.43	0.46	0.33	0.46	0.49	0.34	0.32	0.43	0.28	0.24	0.31
Indonesia	0.00	0.01	0.00	0.00	0.00	0.01		0.02		0.01	0.00	0.01			0.01		0.01	
International Bureau	5.59	5.28	4.81	5.01	4.93	5.75	5.49	5.34	5.73	5.05	4.79	4.93	5.64	4.96	5.67	4.54	4.73	3.43
Ireland	0.06	0.05	0.04	0.03	0.01	0.02	0.03	0.02	0.02	0.02	0.01	0.02	0.01		0.01	0.01	0.02	0.01

Source: WIPO Statistics Database, January 2014

Note: 2013 data are provisional and incomplete. Counts are based on the international filing date.

Table 2b: Receiving Office Share in Total PCT Filings (%)

RO_Name Year / Month	2009 -	2010 -	2011 -	2012 -	2013 to date	2012 10	2012 11	2012 12	2013 1	2013 2	2013 3	2013 4	2013 5	2013 6	2013 7	2013 8	2013 9	2013 10
Israel	0.80	0.67	0.58	0.50	0.59	0.30	0.44	0.47	0.77	0.68	0.59	0.46	0.69	0.54	0.62	0.55	0.45	0.57
Italy	0.39	0.32	0.23	0.21	0.18	0.20	0.16	0.23	0.21	0.21	0.17	0.19	0.16	0.14	0.20	0.12	0.18	0.21
Japan	18.85	19.18	20.81	21.91	21.78	21.70	20.92	19.43	20.44	26.65	24.99	22.58	19.00	19.17	20.46	20.14	22.01	21.74
Kazakhstan	0.01	0.01	0.01	0.01	0.01	0.02	0.02	0.02	0.01	0.01	0.01		0.02		0.01	0.01	0.01	0.01
Kenya	0.00	0.00	0.00	0.00	0.00		0.01		0.01			0.01	0.01					
Kyrgyzstan		0.00		0.00														
Latvia	0.01	0.01	0.01	0.01	0.01	0.02	0.02	0.01	0.01	0.02	0.00				0.01	0.01	0.02	0.01
Libya	0.00																	
Lithuania	0.01	0.00	0.01	0.01	0.01	0.02	0.01	0.01		0.03	0.01		0.02	0.01	0.01	0.01		0.01
Malaysia	0.14	0.20	0.14	0.15	0.11	0.05	0.13	0.03	0.14	0.15	0.10	0.16	0.08	0.10	0.11	0.07	0.15	0.05
Mexico	0.09	0.10	0.09	0.07	0.08	0.07	0.08	0.09	0.14	0.05	0.05	0.11	0.10	0.04	0.10	0.06	0.07	0.08
Morocco	0.01	0.01	0.01	0.02	0.02	0.06	0.03	0.02	0.01	0.01	0.00	0.04	0.02	0.05	0.01	0.01	0.01	0.02
Netherlands	0.71	0.66	0.55	0.52	0.48	0.48	0.55	0.50	0.38	0.60	0.55	0.56	0.47	0.50	0.62	0.39	0.40	0.36
New Zealand	0.20	0.16	0.15	0.12	0.12	0.16	0.13	0.11	0.04	0.12	0.14	0.13	0.10	0.12	0.12	0.12	0.17	0.07
Nicaragua					0.00										0.01			
Norway	0.29	0.30	0.19	0.17	0.14	0.19	0.17	0.11	0.16	0.16	0.12	0.14	0.15	0.14	0.14	0.12	0.13	0.15
Panama					0.00										0.01			
Peru			0.00	0.01	0.00		0.02	0.01			0.01	0.01		0.01	0.02			
Philippines	0.01	0.01	0.01	0.01	0.01	0.01	0.01		0.04	0.01	0.01	0.01	0.02	0.01	0.01	0.01		
Poland	0.10	0.10	0.11	0.09	0.10	0.15	0.06	0.05	0.07	0.15	0.09	0.11	0.07	0.11	0.11	0.08	0.10	0.08
Portugal	0.05	0.04	0.03	0.03	0.04	0.03	0.02	0.04	0.04	0.04	0.04	0.04	0.05	0.04	0.07	0.01	0.01	0.04
Republic of Korea	5.16	5.87	5.71	6.08	5.91	6.47	7.24	7.75	5.80	5.72	4.78	6.92	6.62	5.41	6.73	6.11	5.15	6.18
Republic of Moldova	0.00	0.00	0.00	0.00	0.00				0.01									
Romania	0.02	0.01	0.01	0.01	0.00	0.01	0.01			0.01	0.00							
Russian Federation	0.49	0.49	0.58	0.58	0.49	0.54	0.61	0.71	0.50	0.60	0.49	0.68	0.42	0.62	0.44	0.37	0.36	0.45
San Marino	0.00	0.00																
Serbia	0.02	0.01	0.01	0.01	0.01	0.01		0.01	0.01	0.02		0.01	0.02	0.01	0.01	0.03		0.01
Singapore	0.32	0.30	0.25	0.25	0.28	0.27	0.24	0.21	0.29	0.27	0.21	0.28	0.34	0.26	0.30	0.36	0.27	0.27
Slovakia	0.01	0.02	0.03	0.01	0.01	0.02	0.01			0.01	0.01	0.01	0.02		0.01	0.01	0.04	0.04
Slovenia	0.04	0.05	0.04	0.03	0.04	0.04	0.01	0.03	0.04	0.03	0.02	0.05	0.07	0.05	0.03	0.02	0.03	0.05
South Africa	0.07	0.04	0.05	0.05	0.04	0.13	0.06	0.02	0.02	0.03	0.05	0.07	0.05	0.04	0.08	0.06	0.01	0.02
Spain	0.80	0.86	0.71	0.64	0.60	0.65	0.59	0.56	0.52	0.72	0.54	0.52	0.63	0.66	0.92	0.33	0.48	0.64
Sweden	1.32	1.08	1.01	0.88	0.86	0.98	0.95	1.00	0.68	0.78	0.89	0.85	1.14	1.23	0.73	0.60	0.73	0.94
Switzerland	0.27	0.20	0.17	0.14	0.11	0.11	0.11	0.09	0.14	0.08	0.11	0.12	0.10	0.15	0.11	0.12	0.12	0.09
Syrian Arab Republic	0.01	0.01	0.00	0.00	0.00								0.01					
T F Y R of Macedonia	0.00	0.00		0.00	0.00													0.01
Thailand	0.00	0.03	0.03	0.03	0.04	0.01	0.04	0.02	0.03	0.03	0.02	0.05	0.01	0.02	0.02	0.06	0.06	0.04
Trinidad and Tobago	0.00	0.00		0.00														
Tunisia	0.00	0.00	0.00	0.00	0.00	0.01		0.01						0.01				
Turkey	0.10	0.16	0.15	0.12	0.19	0.14	0.12	0.21	0.39	0.18	0.11	0.16	0.28	0.18	0.27	0.19	0.10	0.05
Uganda					0.00												0.01	
Ukraine	0.05	0.06	0.07	0.06	0.07	0.05	0.05	0.08	0.11	0.04	0.06	0.09	0.04	0.06	0.12	0.05	0.12	0.05
United Kingdom	2.98	2.68	2.32	2.11	1.95	2.08	1.82	1.74	1.81	2.17	1.92	1.88	2.45	1.76	2.10	1.67	1.70	2.03
United States of America	29.64	27.52	27.06	26.62	28.22	27.36	25.81	24.34	29.42	27.45	30.13	26.04	28.70	29.07	24.42	29.12	28.19	29.33
Uzbekistan		0.00		0.00	0.00								0.01					
Viet Nam	0.00	0.00	0.01	0.00	0.01			0.01				0.03	0.01	0.01	0.01			0.02
Zambia			0.00															

Source: WIPO Statistics Database, January 2014

Note: 2013 data are provisional and incomplete. Counts are based on the international filing date.

Table 4a: Number of EASY Filings by Receiving Office (RO)

RO_Name Year / Month	2009 -	2010 -	2011 -	2012 -	2013 to date	2012 10	2012 11	2012 12	2013 1	2013 2	2013 3	2013 4	2013 5	2013 6	2013 7	2013 8	2013 9	2013 10
Total	11,315	9,102	8,194	6,451	4,664	523	530	588	351	463	601	502	492	465	488	410	461	431
Algeria	7	1	3	4	5	1				1	2	1		1				
Armenia	2	4	4	7	3		1	1	1		2							
Australia	834	756	610	536	393	39	46	41	23	34	46	31	44	40	45	51	29	50
Austria	28	28	36	18														
Belgium		8	6	3	3	1				1	1			1				
Brazil	137	144	130	122	115	11	11	10	8	7	16	11	11	4	10	23	14	11
Bulgaria	12	6	9	12	8		2		1	1	1	1	1	2		1		
Canada	944	851	746	649	431	54	50	60	42	47	60	61	38	38	33	33	36	43
Chile		7	8	9	13	2			1	1	1		1	1	3	1	2	2
China	259	174	110	65	23	6	1	1	2	1	1	6	3	1		2	6	1
Colombia				3				1										
Costa Rica			1	1														
Croatia		1																
Cuba	9	5	9	9	7	1	1	3		1	1			1		1	1	2
Czech Republic	29	37	24	28	29	6	1	3	4	3	3	1	3	2		4		9
Ecuador	3	2	3	11	1													1
Estonia	11	10	4	3	1			1					1					
Eurasian Patent Organization	2		6	2	2			1					1	1				
France	191	90	23	10	7	1	2		1	1			2	1			1	1
Georgia			1		1					1								
Germany	250	104	46	35	29	3	6	3	2	5	6	8	3	4	1			
Greece	2	2	4	3	2	1				1						1		
Hungary	28	43	32	55	39	10	1	5	1	4	4	3	5	5	5	3	6	3
Iceland	6	10																
India	317	328	311	362	309	20	19	47	29	31	36	40	26	26	41	24	31	25
International Bureau	604	555	508	367	275	52	50	42	25	23	36	27	25	42	34	17	22	24
Israel	1,127	1,012	894	338	37	10	11	13	6	8	5	6	6	3	3			
Italy	1				1													1
Japan	2,271	2,238	2,265	1,877	1,232	119	151	137	80	150	201	125	123	127	107	93	124	102
Kenya	1		1	1	1		1		1									
Latvia	7	9	5	19	8	2	3	1	1	1	1				1	1	2	1
Lithuania	17	3	14	10	16	3	1	2		4	3		3	1	2	1		2
Malaysia					3										1		1	1
Mexico	18	12	18	13	15		1	2	4		2	3			1	1	1	3
Netherlands	1	2																
New Zealand	259	225	234	212	174	25	20	18	6	17	27	19	16	21	15	17	25	11
Nicaragua					1										1			
Norway	318	357	255	14	1													1
Portugal	43	35	20	24	17	1	2	3	1		3	3	3	1	5		1	
Republic of Korea	489	439	611	756	806	76	68	106	58	69	64	91	88	73	100	66	101	96
Republic of Moldova	2	1	3	3	1				1									
Russian Federation	102	60	129	154	38	6	19	19	4	4	7	8	6	5	2	2		
Serbia	2	2	2	1														
Singapore	282	317	314	306	289	26	30	24	23	23	27	30	39	23	31	34	32	27
Slovakia	2				1													1
Slovenia	37	35	33	33	26	4	2	4	3	1	2	4	6	3	1	2	1	3
South Africa	90	61	79	72	54	15	7	3	3	3	10	7	8	5	8	8	2	
Spain	82	91	69	48	16	2	4	8		4	2		2	2	2		2	2
Sweden	31	44	2	9	1	1	1							1				
Switzerland	127	84	78	64	53	5	4	4	5	4	8	4	5	6	3	8	6	4
Turkey	92	120	106	99	144	9	10	19	12	12	11	11	23	22	27	14	9	3
Ukraine			1	2	5			1			1	1		1	2			
United Kingdom	110			1														
United States of America	2,129	789	427	81	28	11	4	5	3	1	10			1	4	2	5	2

Source: WIPO Statistics Database, January 2014

Note: 2013 data are provisional and incomplete. Counts are based on the international filing date. EASY (Electronic Application System).

Table 4b: EASY Filings as a Percentage of Total Filings by Receiving Office (%)

RO Name Year / Month	2009	2010	2011	2012	2013 to date	2012 10	2012 11	2012 12	2013 1	2013 2	2013 3	2013 4	2013 5	2013 6	2013 7	2013 8	2013 9	2013 10
Total	7.3	5.5	4.5	3.3	2.8	3.1	3.0	3.0	2.5	3.0	2.9	3.1	3.0	2.7	2.9	2.6	2.7	2.5
Algeria	100.0	100.0	100.0	100.0	100.0	100.0				100.0	100.0	100.0		100.0				
Armenia	100.0	100.0	100.0	100.0	100.0		100.0	100.0	100.0		100.0							
Australia	48.8	43.2	36.1	33.4	31.4	28.1	34.1	29.1	27.7	32.4	31.9	27.9	33.6	28.8	35.7	35.9	21.8	36.0
Austria	5.7	5.7	6.4	3.4														
Belgium		9.1	8.3	5.7	5.2	33.3				25.0	20.0			11.1				
Brazil	31.0	32.1	25.0	21.6	25.1	26.8	16.7	15.4	22.9	29.2	37.2	27.5	20.4	10.0	20.8	30.7	28.6	22.0
Bulgaria	57.1	22.2	32.1	38.7	17.8		66.7		100.0	25.0	20.0	12.5	16.7	33.3		33.3		
Canada	49.8	41.4	34.0	30.4	24.8	29.2	26.2	34.9	25.5	27.2	26.2	31.4	19.6	23.8	21.7	21.7	24.0	25.0
Chile		11.7	9.5	11.4	16.3	20.0			20.0	9.1	33.3		16.7	16.7	27.3	10.0	22.2	16.7
China	3.2	1.3	0.6	0.3	0.1	0.4	0.1	0.0	0.1	0.1	0.1	0.4	0.2	0.0		0.1	0.3	0.1
Colombia				75.0				100.0										
Costa Rica			50.0	25.0														
Croatia		2.6																
Cuba	100.0	100.0	100.0	100.0	100.0	100.0	100.0	100.0		100.0	100.0			100.0		100.0	100.0	100.0
Czech Republic	17.7	27.8	19.0	20.0	20.6	46.2	9.1	15.0	44.4	18.8	14.3	7.7	27.3	22.2		30.8		42.9
Ecuador	100.0	100.0	100.0	100.0	100.0													100.0
Estonia	64.7	55.6	44.4	50.0	20.0			100.0					100.0					
Eurasian Patent Organization	18.2		42.9	13.3	14.3			25.0					100.0	50.0				
France	5.1	2.6	0.7	0.3	0.3	0.3	0.8		0.5	0.4			0.7	0.3			0.3	0.3
Georgia			20.0		14.3					100.0								
Germany	12.8	5.9	2.7	2.5	2.5	2.7	5.0	2.9	2.2	5.4	6.4	8.1	3.2	4.7	0.6			
Greece	2.9	3.5	6.9	5.6	3.9	16.7					20.0					33.3		
Hungary	25.0	28.7	24.4	37.9	38.2	55.6	11.1	26.3	12.5	33.3	50.0	37.5	35.7	50.0	27.8	60.0	50.0	42.9
Iceland	35.3	38.5																
India	41.8	38.4	34.6	42.1	50.8	32.8	31.1	56.0	45.3	62.0	38.3	51.3	45.6	48.1	56.2	55.8	73.8	47.2
International Bureau	7.0	6.4	5.8	3.8	3.4	5.3	5.2	4.0	3.1	3.0	3.7	3.4	2.7	5.0	3.6	2.4	2.7	4.1
Israel	91.0	92.2	84.3	35.0	3.8	19.6	14.3	14.3	5.6	7.7	4.2	8.2	5.3	3.3	2.9			
Italy	0.2				0.3													2.9
Japan	7.8	7.1	6.0	4.4	3.4	3.2	4.1	3.6	2.8	3.7	3.9	3.5	3.9	3.9	3.1	3.0	3.2	2.8
Kenya	33.3		25.0	50.0	33.3		100.0		100.0									
Latvia	63.6	52.9	50.0	86.4	66.7	66.7	100.0	50.0	100.0	33.3	100.0				100.0	100.0	50.0	100.0
Lithuania	100.0	100.0	100.0	100.0	94.1	100.0	100.0	100.0		100.0	100.0		100.0	100.0	100.0	50.0		100.0
Malaysia					1.6										5.3		3.8	11.1
Mexico	12.3	7.3	10.8	9.4	11.6		7.1	11.8	21.1		18.2	16.7			5.9	11.1	7.7	23.1
Netherlands	0.1	0.2																
New Zealand	85.5	84.9	84.5	87.6	91.1	92.6	90.9	81.8	100.0	89.5	93.1	90.5	100.0	100.0	71.4	94.4	86.2	100.0
Nicaragua					100.0										100.0			
Norway	70.8	72.9	71.8	4.3	0.4													4.0
Portugal	52.4	52.2	41.7	44.4	27.4	20.0	66.7	37.5	20.0		37.5	50.0	33.3	16.7	41.7		50.0	
Republic of Korea	6.1	4.6	5.9	6.4	8.2	6.9	5.3	7.0	7.1	7.9	6.5	8.3	8.0	7.9	8.8	6.9	11.3	9.2
Republic of Moldova	100.0	100.0	100.0	100.0	100.0				100.0									
Russian Federation	13.5	7.4	12.3	13.6	4.7	6.5	17.6	13.7	5.7	4.4	6.9	7.4	8.6	4.8	2.7	3.5		
Serbia	8.0	12.5	11.8	5.9														
Singapore	56.4	64.6	68.9	61.9	61.5	55.3	71.4	58.5	56.1	56.1	62.8	66.7	68.4	52.3	60.8	60.7	68.1	60.0
Slovakia	9.5				4.2												14.3	
Slovenia	54.4	46.1	41.3	49.3	40.6	66.7	100.0	66.7	50.0	25.0	40.0	50.0	54.5	37.5	20.0	66.7	16.7	37.5
South Africa	82.6	83.6	84.9	77.4	73.0	65.2	70.0	100.0	100.0	60.0	90.9	63.6	88.9	83.3	57.1	80.0	100.0	
Spain	6.6	6.4	5.3	3.8	1.6	1.8	3.9	7.3		3.6	1.8		1.9	1.8	1.3		2.4	1.8
Sweden	1.5	2.5	0.1	0.5	0.1	0.6	0.6							0.5				
Switzerland	30.8	25.4	25.0	22.8	28.0	27.8	21.1	23.5	25.0	33.3	34.8	21.1	29.4	23.1	15.8	44.4	30.0	26.7
Turkey	57.5	45.5	38.0	41.1	46.5	37.5	47.6	45.2	21.8	42.9	47.8	42.3	50.0	71.0	60.0	48.3	50.0	33.3
Ukraine			0.8	1.7	4.1			6.3			8.3	7.1		10.0	9.5			
United Kingdom	2.4			0.0														
United States of America	4.6	1.7	0.9	0.2	0.1	0.2	0.1	0.1	0.1	0.0	0.2			0.0	0.1	0.0	0.1	0.0

Source: WIPO Statistics Database, January 2014

Note: 2013 data are provisional and incomplete. Counts are based on the international filing date. EASY (Electronic Application System).

Table 5: Electronic Filings (PDF, XML and EFS-Web) by Receiving Office (RO)

Number of PDF Filing by Receiving Office

RO_Name Year / Month	2009	2010	2011	2012	2013 to date	2012 10	2012 11	2012 12	2013 1	2013 2	2013 3	2013 4	2013 5	2013 6	2013 7	2013 8	2013 9	2013 10
Total	57,551	67,044	79,805	90,319	81,441	7,768	8,336	9,812	6,960	6,819	9,482	7,412	8,197	9,215	8,410	7,730	8,924	8,292
Australia	349	480	630	658	501	63	52	59	31	40	47	52	58	67	56	49	45	56
Austria			49	207	204	23	18	23	28	23	25	21	14	17	19	17	29	11
Canada	193	487	755	917	809	84	92	74	76	72	108	69	85	85	84	77	68	85
China	5,854	9,607	13,382	15,532	14,287	1,116	1,518	2,149	1,090	681	1,338	1,264	1,287	1,690	1,747	1,938	1,867	1,385
Denmark	335	344	517	510	350	36	37	71	29	22	40	30	46	48	40	19	35	41
European Patent Office	17,792	20,671	23,974	26,657	22,554	2,302	2,470	2,858	1,962	2,119	2,709	2,185	2,233	2,412	2,346	1,890	2,306	2,392
Finland	1,051	1,102	1,172	1,310	1,035	125	137	114	107	119	128	128	113	126	61	53	112	88
France	2,507	2,712	2,896	2,804	2,401	292	213	300	188	212	252	224	265	266	298	130	296	270
Germany	124	228	353	480	636	35	44	41	39	45	41	47	42	46	105	90	84	97
Iceland		13	15	17	8		2	2	1		1	1	2	1	1			1
International Bureau	4,909	5,358	5,714	7,032	5,951	693	666	765	584	562	707	570	698	633	666	516	631	384
Israel			86	541	865	32	56	69	92	89	110	66	105	85	90	76	67	85
Lithuania					1											1		
Malaysia				3	12	1			1	3	1				2		3	2
Netherlands	834	902	912	937	753	78	87	88	52	77	109	84	71	79	100	58	65	58
Norway				257	184	27	29	15	20	23	19	17	20	22	7	17	20	19
Poland	37	36	61	38	24	2	2	3		7	2	1		4	5		3	2
Portugal	1				1							1						
Slovakia	11	17	20	15	7	2							2				2	3
Spain	633	867	890	901	751	90	78	74	52	75	85	62	77	92	122	42	62	82
Sweden	1,514	1,484	1,606	1,501	1,274	144	144	172	85	101	172	122	158	194	109	80	109	144
United Kingdom	1,732	2,154	2,573	3,248	2,831	299	262	293	220	290	338	264	350	267	320	227	254	301
United States of America	19,675	20,582	24,200	26,754	26,002	2,324	2,429	2,642	2,303	2,259	3,249	2,205	2,571	3,081	2,232	2,450	2,866	2,786

PDF Filings as a Percentage of Total Filings by Receiving Office (%)

RO_Name Year / Month	2009	2010	2011	2012	2013 to date	2012 10	2012 11	2012 12	2013 1	2013 2	2013 3	2013 4	2013 5	2013 6	2013 7	2013 8	2013 9	2013 10
Total	37.0	40.8	43.7	46.2	49.0	45.4	47.4	50.2	49.6	44.7	46.3	46.5	49.5	54.2	49.8	49.6	51.3	49.0
Australia	20.4	27.4	37.3	40.9	40.0	45.3	38.5	41.8	37.3	38.1	32.6	46.8	44.3	48.2	44.4	34.5	33.8	40.3
Austria			8.7	38.7	54.0	41.8	42.9	47.9	71.8	52.3	61.0	40.4	58.3	47.2	57.6	53.1	64.4	34.4
Canada	10.2	23.7	34.4	43.0	46.5	45.4	48.2	43.0	46.1	41.6	47.2	35.6	43.8	53.1	55.3	50.7	45.3	49.4
China	73.2	74.4	76.6	78.0	80.9	73.7	78.4	82.1	80.9	77.0	79.8	78.1	74.4	80.9	82.1	84.3	84.8	81.6
Denmark	55.6	64.2	76.3	79.2	83.3	75.0	78.7	93.4	70.7	75.9	90.9	81.1	93.9	81.4	95.2	65.5	89.7	80.4
European Patent Office	65.0	71.5	77.6	82.2	86.6	82.7	84.1	85.3	86.6	87.1	87.6	86.2	86.2	88.2	85.7	84.4	87.0	86.3
Finland	90.8	93.2	95.3	96.6	96.2	96.9	98.6	97.4	95.5	97.5	96.2	92.8	97.4	99.2	96.8	96.4	97.4	92.6
France	66.5	78.8	82.8	85.9	91.9	86.6	81.3	88.2	88.3	91.8	93.3	91.1	96.0	93.0	88.7	90.3	92.2	93.1
Germany	6.3	12.9	20.8	33.7	55.2	31.5	36.4	39.8	43.8	48.4	43.6	47.5	45.2	54.1	63.3	62.1	64.6	61.0
Iceland		50.0	83.3	70.8	72.7		100.0	100.0	100.0		100.0	50.0	100.0	100.0	50.0			50.0
International Bureau	56.5	61.7	65.1	71.9	72.7	70.4	69.0	73.2	72.6	73.0	72.0	72.5	74.7	75.1	69.6	72.9	76.8	66.1
Israel			8.1	55.9	88.5	62.7	72.7	75.8	85.2	85.6	91.7	90.4	92.1	92.4	85.7	88.4	85.9	87.6
Lithuania					5.9											50.0		
Malaysia				1.0	6.5	12.5			5.0	13.0	4.8				10.5		11.5	22.2
Netherlands	75.7	83.7	91.6	91.9	93.7	95.1	90.6	90.7	98.1	84.6	96.5	94.4	91.0	92.9	96.2	96.7	92.9	95.1
Norway				79.1	79.7	81.8	96.7	71.4	90.9	92.0	79.2	73.9	83.3	91.7	30.4	89.5	90.9	76.0
Poland	24.5	21.7	29.5	22.2	14.7	8.0	20.0	33.3		30.4	10.5	5.6		22.2	26.3		16.7	14.3
Portugal	1.2				1.6							12.5						
Slovakia	52.4	63.0	40.8	53.6	29.2	66.7							50.0				28.6	50.0
Spain	50.9	61.4	68.4	72.1	75.6	81.1	75.7	67.9	71.2	68.2	77.3	74.7	74.0	81.4	78.2	80.8	74.7	75.2
Sweden	74.0	83.6	87.0	87.6	88.8	85.7	86.2	87.8	88.5	84.9	94.0	89.7	83.6	92.8	87.9	86.0	85.8	90.6
United Kingdom	37.4	48.8	60.9	78.7	87.5	83.8	81.9	85.9	86.6	87.9	86.0	88.3	86.2	89.3	90.1	87.3	86.1	87.8
United States of America	42.7	45.5	49.0	51.5	55.5	49.6	53.5	55.5	55.8	54.0	52.6	53.1	54.1	62.3	54.0	58.5	56.1	

Source: WIPO Statistics Database, January 2014

Note: 2013 data are provisional and incomplete. Counts are based on the international filing date. EFS-Web (Electronic Filing System).

Table 5: Electronic Filings (PDF, XML and EFS-Web) by Receiving Office (RO)

Number of XML Filings by Receiving Office

RO_Name Year / Month	2009	2010	2011	2012	2013 to date	2012 10	2012 11	2012 12	2013 1	2013 2	2013 3	2013 4	2013 5	2013 6	2013 7	2013 8	2013 9	2013 10
Total	35,372	39,935	47,615	55,055	46,271	4,945	5,081	5,455	3,718	4,825	6,028	4,733	4,365	4,241	4,704	4,188	4,738	4,731
Australia	1	6	5	5	5	2		1	2	1				1	1			
Austria			3	4	3	1					1	1				1		
Canada	6	5	10	11	7	2	1	2			1	1	2	1	1			1
China	805	1,295	2,053	2,807	2,368	291	300	336	171	123	209	254	316	285	308	267	227	208
Denmark	1	15	3	1														
European Patent Office	279	303	345	428	249	36	64	75	14	18	17	31	40	19	27	12	35	36
Finland		1	2	1														
France			1															
Germany	26	18	24	12	3			3	1				1					1
International Bureau	360	282	183	202	126	20	17	14	16	12	13		17	19	6	13	14	8
Israel				3	2			1	1							2		
Japan	26,434	28,861	35,284	40,554	34,647	3,576	3,495	3,630	2,769	3,880	4,886	3,429	2,996	3,097	3,328	3,022	3,687	3,553
Malaysia	32	66	37	51	14			3		2	6	1	2					
Netherlands			1															
Norway				1														
Republic of Korea	7,376	9,015	9,617	10,936	8,829	1,016	1,199	1,387	741	788	893	995	988	832	1,022	871	777	922
Slovakia	3	3	4		2								1					1
Spain	10	11	26	18	5			3						1		1		1
Sweden	1	2	3	2	1								1					
United Kingdom	38	52	14	18	10	1	1	3	1				2	1	1	2	1	1
United States of America				1														

XML Filings as a Percentage of Total Filings by Receiving Office (%)

RO_Name Year / Month	2009	2010	2011	2012	2013 to date	2012 10	2012 11	2012 12	2013 1	2013 2	2013 3	2013 4	2013 5	2013 6	2013 7	2013 8	2013 9	2013 10
Total	22.8	24.3	26.1	28.2	27.9	28.9	28.9	27.9	26.5	31.7	29.4	29.7	26.4	24.9	27.9	26.9	27.2	28.0
Australia	0.1	0.3	0.3	0.3	0.4	1.4		0.7	2.4	1.0				0.7	0.8			
Austria			0.5	0.7	0.8	1.8					2.4	1.9				3.1		
Canada	0.3	0.2	0.5	0.5	0.4	1.1	0.5	1.2		0.6	0.4	1.0	0.5	0.6				0.6
China	10.1	10.0	11.8	14.1	13.4	19.2	15.5	12.8	12.7	13.9	12.5	15.7	18.3	13.6	14.5	11.6	10.3	12.2
Denmark	0.2	2.8	0.4	0.2														
European Patent Office	1.0	1.0	1.1	1.3	1.0	1.3	2.2	2.2	0.6	0.7	0.6	1.2	1.5	0.7	1.0	0.5	1.3	1.3
Finland		0.1	0.2	0.1														
France			0.0															
Germany	1.3	1.0	1.4	0.8	0.3			2.9	1.1			1.0						0.8
International Bureau	4.1	3.2	2.1	2.1	1.5	2.0	1.8	1.3	2.0	1.6	1.3	2.2	2.0	0.7	1.4	2.0	1.0	1.4
Israel				0.3	0.2			1.3	1.1							1.9		
Japan	90.2	91.6	92.9	94.8	95.8	96.3	95.0	95.5	96.5	95.5	95.4	95.3	95.3	95.0	96.3	96.3	96.3	96.6
Malaysia	14.3	19.8	14.7	17.3	7.6			13.0		15.0	8.7	28.6	4.0	14.3				
Netherlands			0.1															
Norway				0.3														
Republic of Korea	91.9	93.5	92.4	92.1	90.0	91.7	94.3	91.6	91.0	90.5	91.2	90.2	90.1	90.4	89.9	91.5	86.8	88.2
Slovakia	14.3	11.1	8.2		8.3								25.0					14.3
Spain	0.8	0.8	2.0	1.4	0.5			2.8						1.0		0.6		1.2
Sweden	0.0	0.1	0.2	0.1	0.1								0.7					1.8
United Kingdom	0.8	1.2	0.3	0.4	0.3	0.3	0.3	0.9	0.4		0.5	0.3	0.2		0.6	0.4	0.3	0.3
United States of America				0.0														

Number of EFS-Web Filings by Receiving Office

RO_Name Year / Month	2009	2010	2011	2012	2013 to date	2012 10	2012 11	2012 12	2013 1	2013 2	2013 3	2013 4	2013 5	2013 6	2013 7	2013 8	2013 9	2013 10
Total	19,934	21,739	23,599	25,149	20,977	2,311	2,130	2,171	1,862	1,955	2,960	1,978	2,223	1,896	1,925	2,075	2,015	2,088
International Bureau	380	402	467	563	594	68	60	81	63	64	90	57	67	62	79	51	42	19
Mexico					1													1
United States of America	19,554	21,337	23,132	24,586	20,382	2,243	2,070	2,090	1,799	1,891	2,870	1,921	2,156	1,834	1,846	2,024	1,973	2,068

EFS-Web Filings as a Percentage of Total Filings by Receiving Office (%)

RO_Name Year / Month	2009	2010	2011	2012	2013 to date	2012 10	2012 11	2012 12	2013 1	2013 2	2013 3	2013 4	2013 5	2013 6	2013 7	2013 8	2013 9	2013 10
Total	12.8	13.2	12.9	12.9	12.6	13.5	12.1	11.1	13.3	12.8	14.5	12.4	13.4	11.1	11.4	13.3	11.6	12.3
International Bureau	4.4	4.6	5.3	5.8	7.3	6.9	6.2	7.8	7.8	8.3	9.2	7.3	7.2	7.4	8.3	7.2	5.1	3.3
Mexico					0.8													7.7
United States of America	42.5	47.2	46.9	47.3	43.5	47.9	45.6	43.9	43.6	45.2	46.5	46.3	45.4	37.1	44.8	44.6	40.2	41.7

Source: WIPO Statistics Database, January 2014

Note: 2013 data are provisional and incomplete. Counts are based on the international filing date. EFS-Web (Electronic Filing System).

**World Intellectual Property
Organization**

Address:

34, chemin des Colombettes
P.O. Box 18
CH-1211 Geneva 20
Switzerland

Telephone: +41 22 338 91 11

Fax: +41 22 733 54 28

Website: www.wipo.int

**Contact Information
Economics and Statistics Division**

Website: www.wipo.int/ipstats

e-mail: ipstats.mail@wipo.int