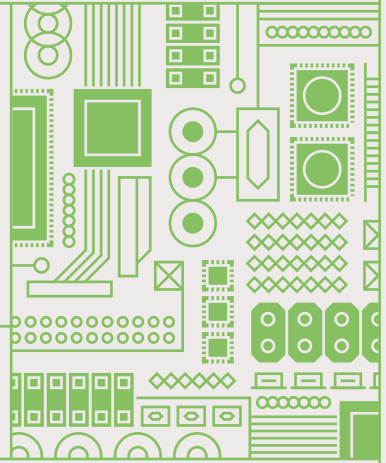




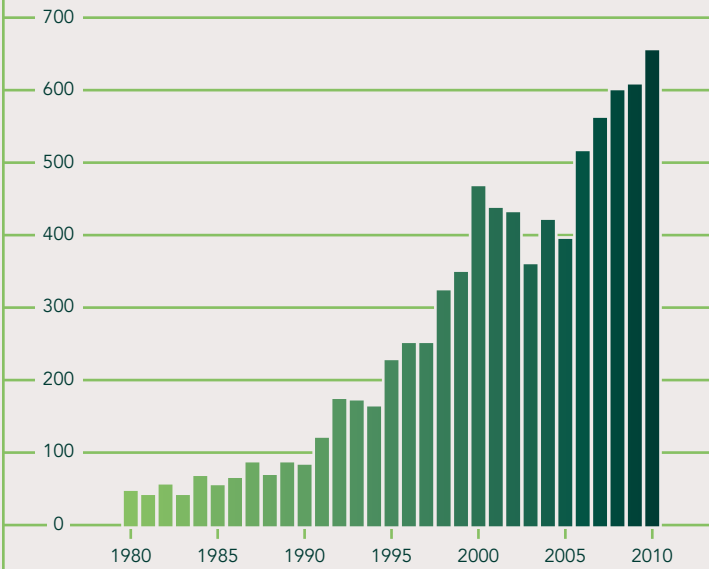
Electronic Waste Recycling



The surge in patenting activity since 2000 points strongly to the commoditization of e-waste as a source of high value materials, such as rare earth and noble metals.

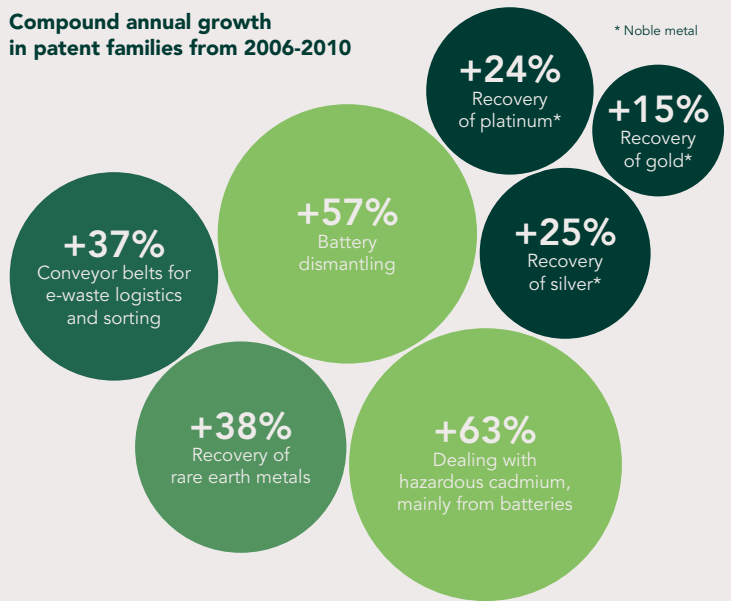
Patenting activity

Number of patent families*



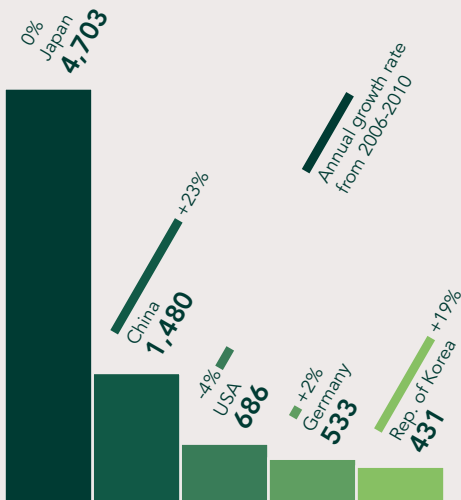
Major technology trends

Compound annual growth in patent families from 2006-2010



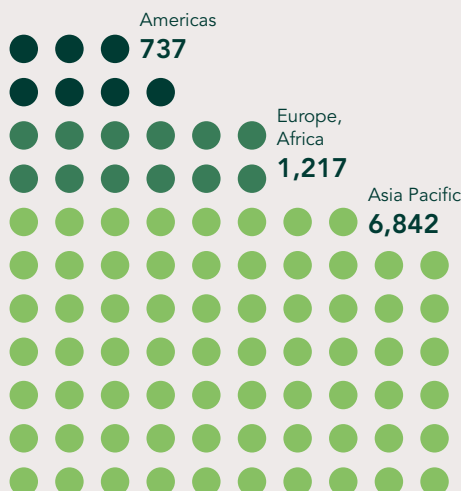
Top 5 origins

Number of patent families per office of first filing since 1980



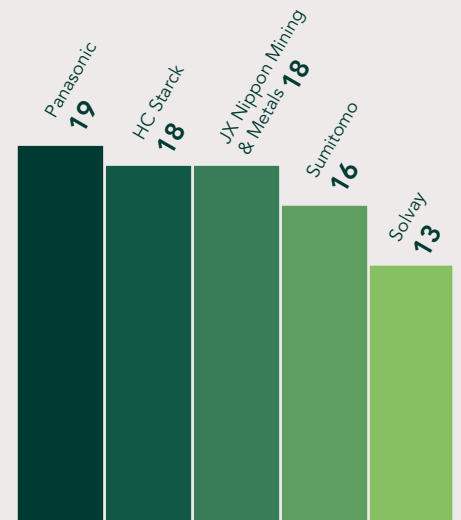
Regional distribution

Number of patent families by region of first filing since 1980



Top 5 applicants

Number of patent families filed in at least five territories



Specializations

By economy type

