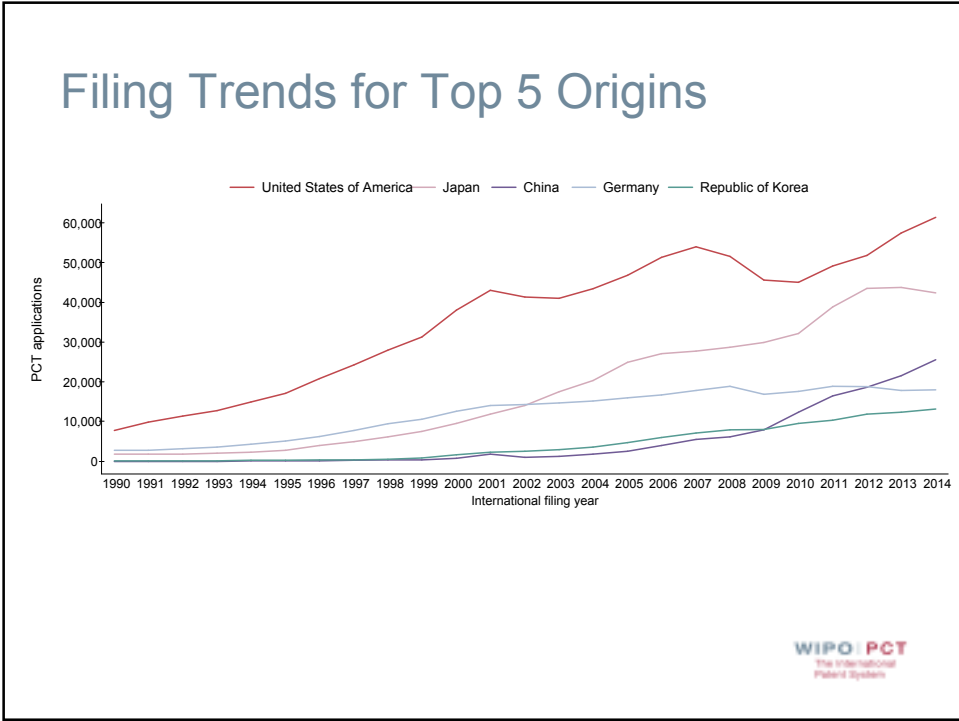
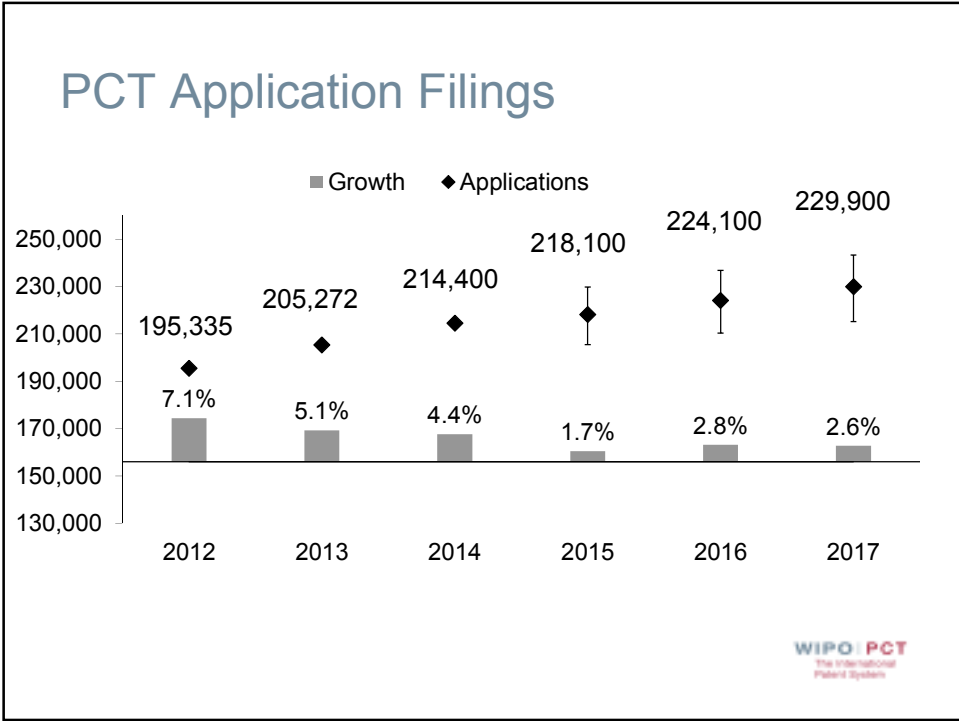


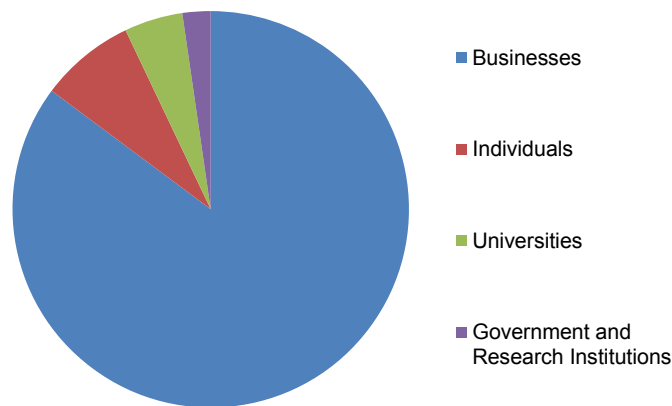


Outline

- PCT Application Filings
- PCT National Phase Entries
- Receiving Offices
- International Authorities



Distribution of PCT Applicants in 2014



Top Applicants

Businesses: Huawei Technologies – 3,442 applications published

Universities: University of California – 413 applications published

Government and Research Institutions: Commissariat à l'Energie Atomique et aux Energies Alternatives – 434 applications published

WIPO PCT
The International
Patent System

Main Fields of Technology in 2014

■ Main Fields of Technology by Percentage of Total

■ Computer Technology	17,653 applications (8.4%)
■ Digital Communication	16,165 applications (7.7%)
■ Electrical Machinery	15,220 applications (7.3%)

■ Largest increases:

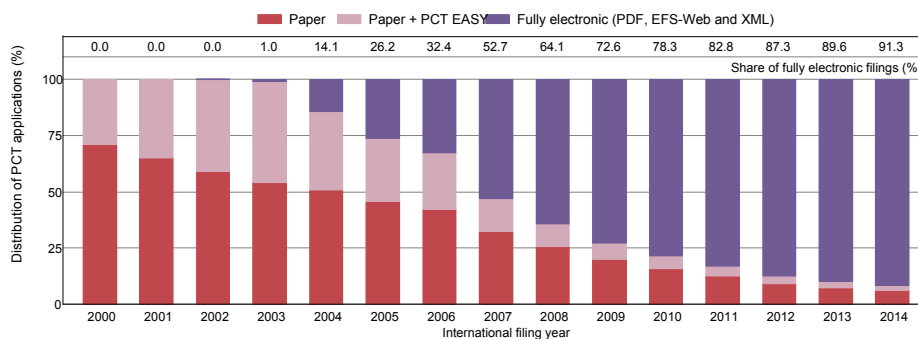
- Control: +21.4%
- Computer technology: +19.4%
- Medical Technology: +17.1%

■ Largest decreases:

- Optics: -5.2%
- Semiconductors: -2.0%
- Analysis of biological materials: -0.8%

WIPO PCT
The International
Patent System

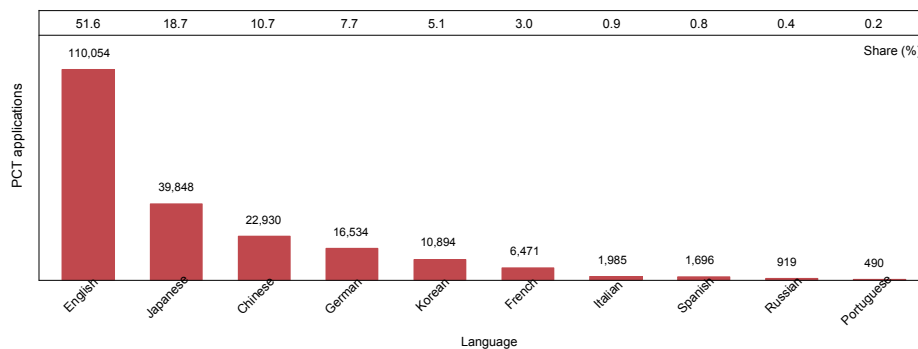
PCT Applications by Medium of Filing



■ Distribution in 2014: 6.4% paper, 2.3% PCT-EASY, 91.3% fully electronic (PDF 65.1%, XML 26.1%)



Distribution of Filing Languages in 2014

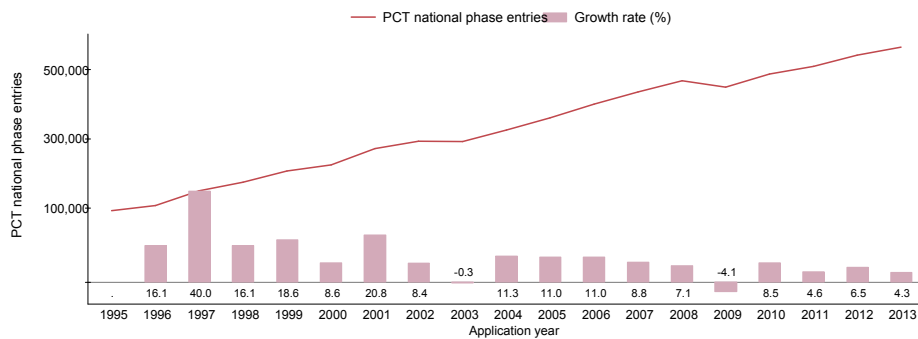


■ Of the top 5 filing languages:

- Increases for Chinese (+18.7%), Korean (+6.5%), and English (+5.7%)
- Decrease for Japanese (-3.4%)
- German almost unchanged



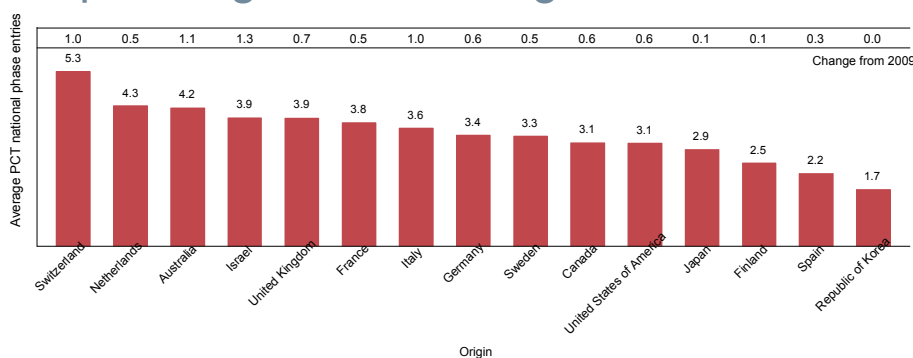
PCT- National Phase Entries



- 565,500 national phase entries estimated for 2013 (+4.3%)
- 475,500 non-resident national phase entries (55.3% of all non-resident applications in 2013)



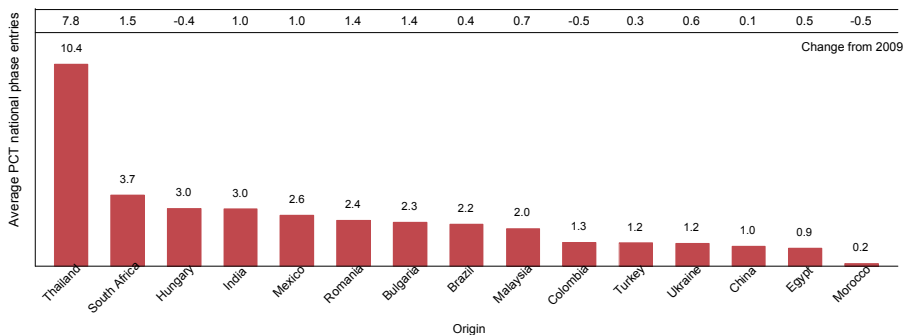
Average Number of National Phase Entries (NPEs) per PCT Application – Top 15 High Income Origins



- United States of America (157,900) and Japan (120,837) had highest number of NPEs, but averaged 3.1 and 2.9 NPEs per application
- Switzerland had 5.3 NPEs per application.



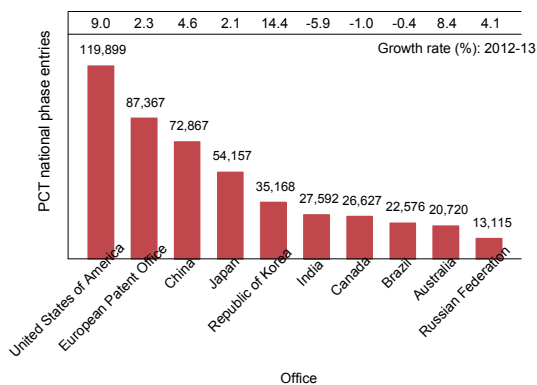
Average Number of National Phase Entries (NPEs) per PCT Application – Top 15 Middle Income Origins



- China (18,016), India (3,890), Brazil (1,250) and South Africa (1,140) had highest number of NPEs
- China had lowest number of NPEs per PCT application (1.0) among top 10 origins



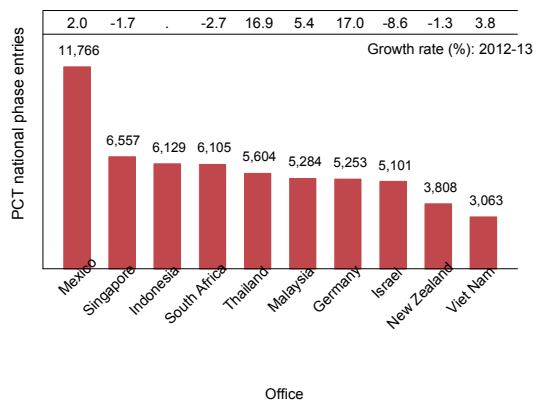
PCT NPEs for Top 10 Offices in 2013



- USPTO had most NPEs in 2013 (nearly 120,000)
- Highest growth among top 10 Offices: KIPO (+14.4%), USPTO (+9.0%) and IP Australia (+8.4%)



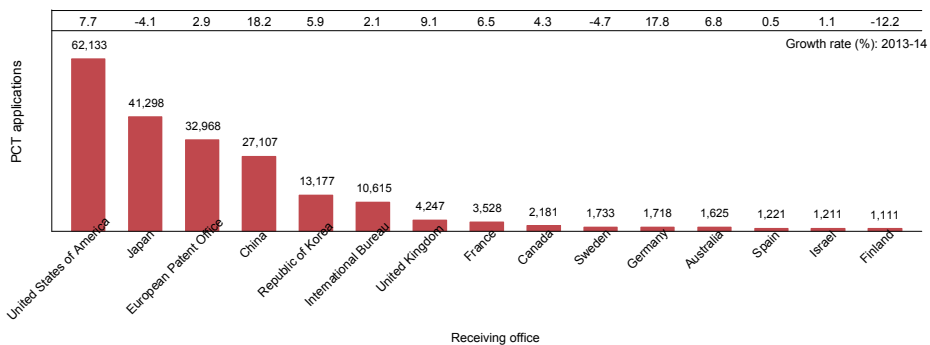
PCT NPEs for Next 10 Offices in 2013



- Highest growth among next 10 Offices: Germany (+17.0%) and Thailand (+16.9%)



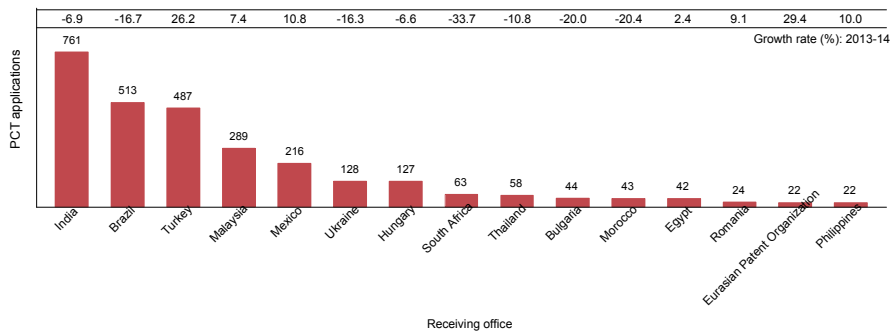
PCT Applications by Receiving Office



- Filings increased in 2014 for 12 of the top 15 receiving Offices
- Largest increases: China (+18.2%) and Germany (+17.8%)
- The top 15 receiving Offices received 96% of all PCT applications filed in 2014



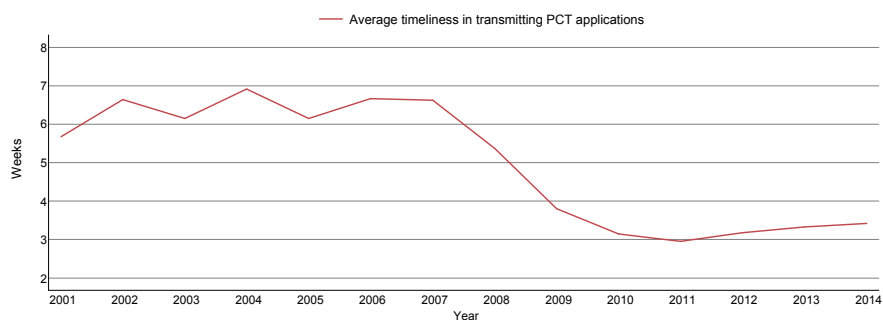
PCT applications for selected receiving Offices of middle-income countries in 2014



- Of the receiving Offices in middle-income countries that received the most applications in 2014, sharp rise for Turkey (+26.2%), declines for India (-6.9%) and Brazil (-16.7%)



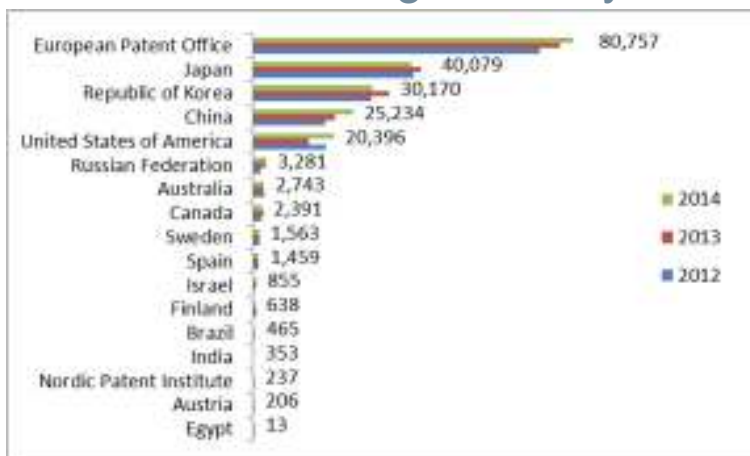
Receiving Offices: Timeliness of Transmitting PCT Applications to the IB



- Average transmission time between international filing date and date the IB received the application rose to 3.4 weeks in 2014
- 83.5% of PCT applications transmitted to IB within 4 weeks in 2014 (86.9% in 2013).



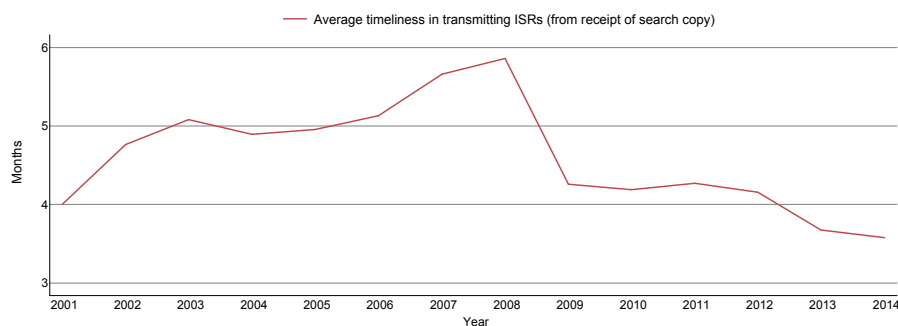
Search Reports established by International Searching Authority



- First full year of operations in 2014 for Egypt and India

WIPO | PCT
The International
Patent System

Average Timeliness in transmitting ISRs to the IB from Date of Receipt of Search Copy



- Average timeliness in transmitting ISRs to the IB was 3.6 months - shortest time since 2001
- 67% of PCT applications transmitted to IB within 3 months from date of receipt of search copy (65% in 2013)
- 77.7% of all ISRs issued within 16 months of priority date (77.3% in 2013)

WIPO | PCT
The International
Patent System

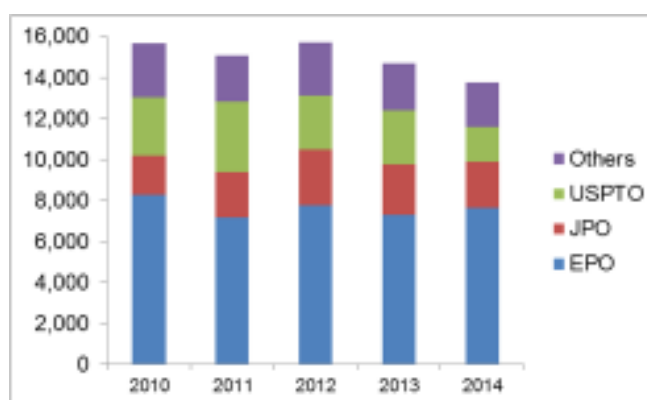
Distribution of Supplementary International Search Requests

Supplementary International Searching Authority	Year				
	2010	2011	2012	2013	2014
Austria		1	2	2	2
European Patent Office	3	7	21	30	61
Finland			1		
Nordic Patent Institute	1		3		
Russian Federation	35	31	19	32	46
Sweden	2	2		3	
Total	41	41	46	67	109

- The EPO and Rospatent accounted for 98.2% of requests for supplementary international search in 2014

WIPO | PCT
The International
Patent System

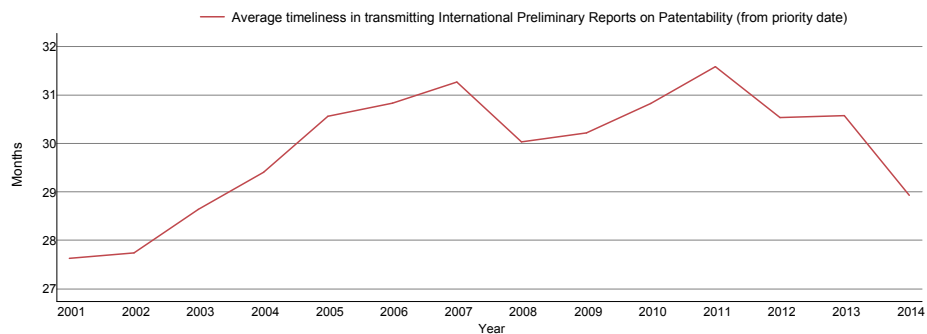
IPRPs (Chapter II) by International Preliminary Examination Authority



- Reports established by IPEA fell by 6.5% in both 2013 and 2014 to 13,742
- 84.3% of IPRPs (Chapter II) were produced by the EPO, the JPO or the USPTO

WIPO | PCT
The International
Patent System

Average Timeliness in transmitting IPRPs



- Average time in transmitting IPRPs fell to 28.9 months in 2014, similar to level observed in 2003
- 73.2% of all IPRPs were transmitted to the IB within 28 months of priority date (72.8% in 2013)

WIPO | PCT
The International
Patent System

Further information:

2015 PCT Yearly Review

The International Patent System

WIPO Publication No. 901E/2015

WIPO IP Statistics Data Center

<http://www.wipo.int/ipstats/en/>

Patent Prosecution Highway Portal Site

<http://www.jpo.go.jp/ppph-portal/index.htm>

WIPO | PCT
The International
Patent System