



PCT – Statistics

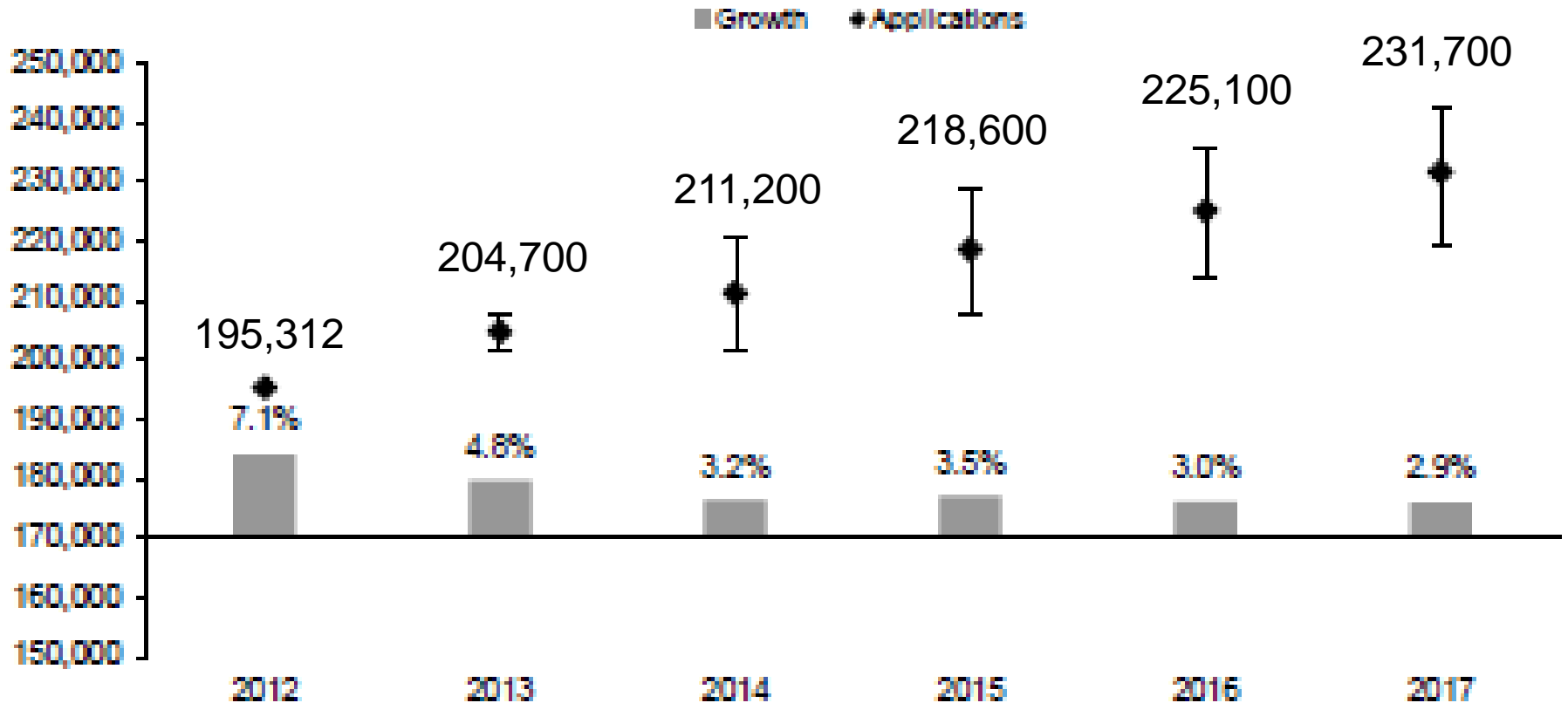
Meeting of International Authorities
Twenty-First Session
Tel Aviv, February 11 to 13, 2014

Outline

- 1) International Applications Filed
 - 1) Overall Trends and Forecasts
 - 2) Medium of Filing
 - 3) Languages
- 2) National Phase Entries
- 3) International Authorities
 - 1) International Search
 - 2) Supplementary International Search
 - 3) International Preliminary Examination
- 4) PCT – Patent Prosecution Highway

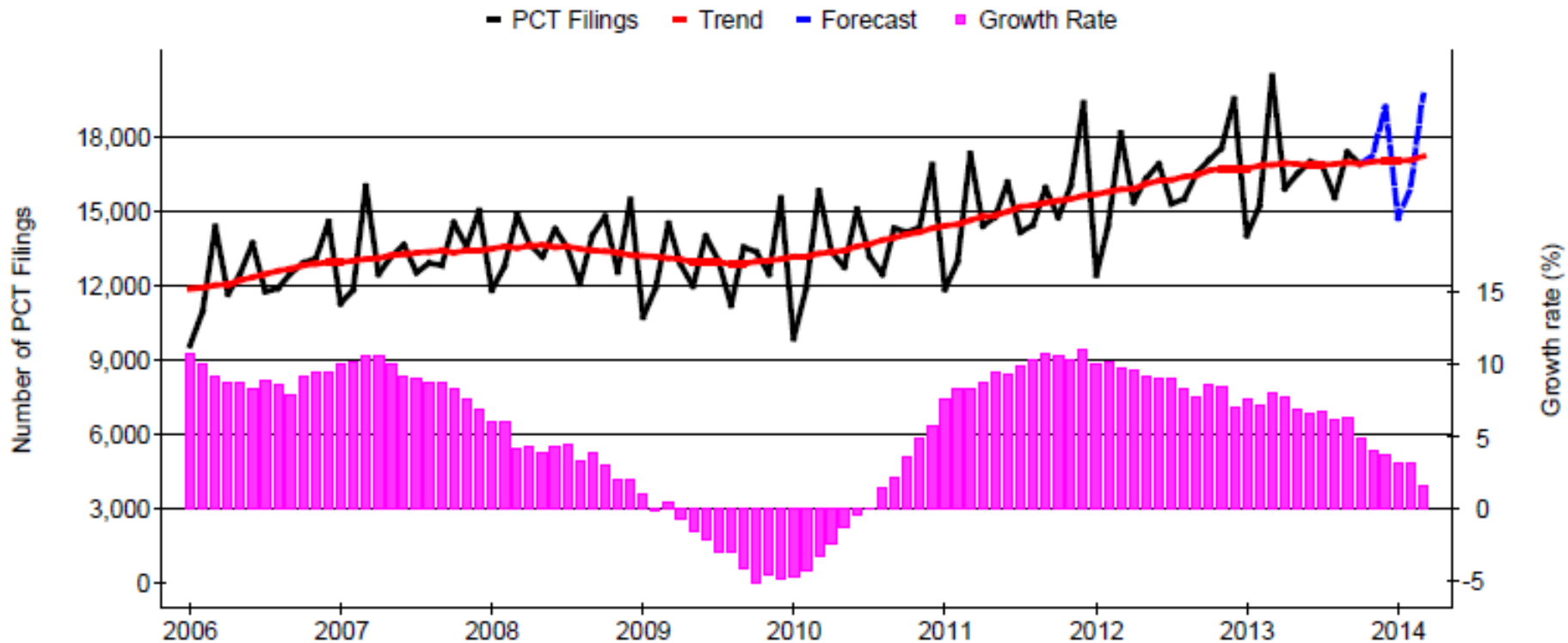
Application Filings and Forecast

PCT Application Forecast



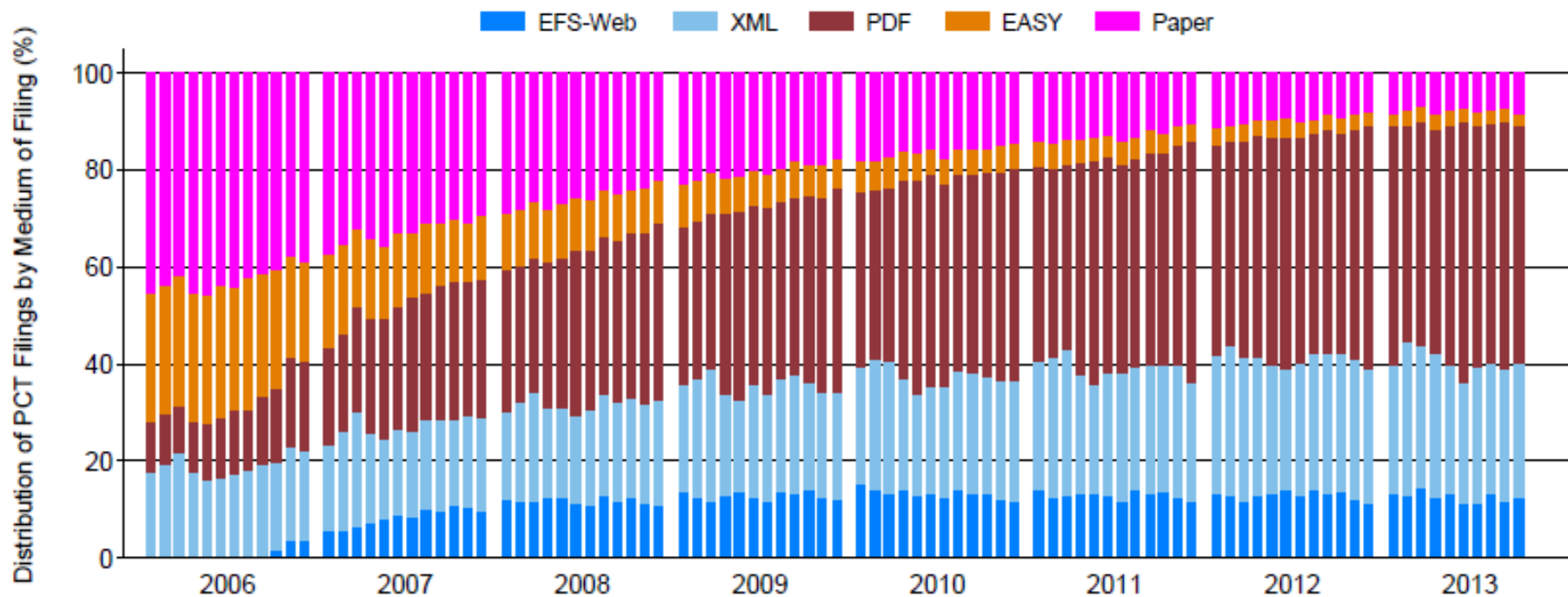
Source: Economics and Statistics Division, WIPO

Monthly Trends in Applications Filed



Source: PCT Monthly Statistics Report, January 2014

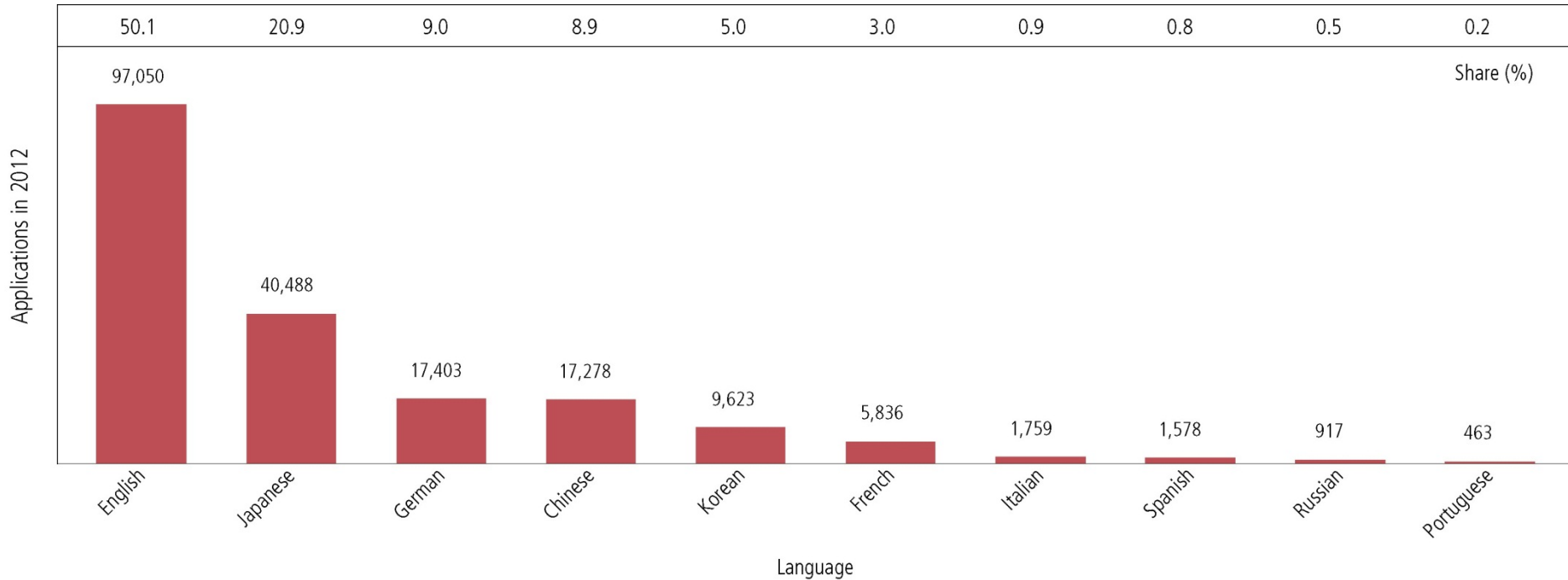
Medium of Filing



Source: WIPO Statistics Database, January 2014

For 2013, 7.6% paper, 2.8% PCT-EASY, 49.0% PDF, 27.9% XML, 12.6% EFS-web

Top 10 Filing Languages in 2012

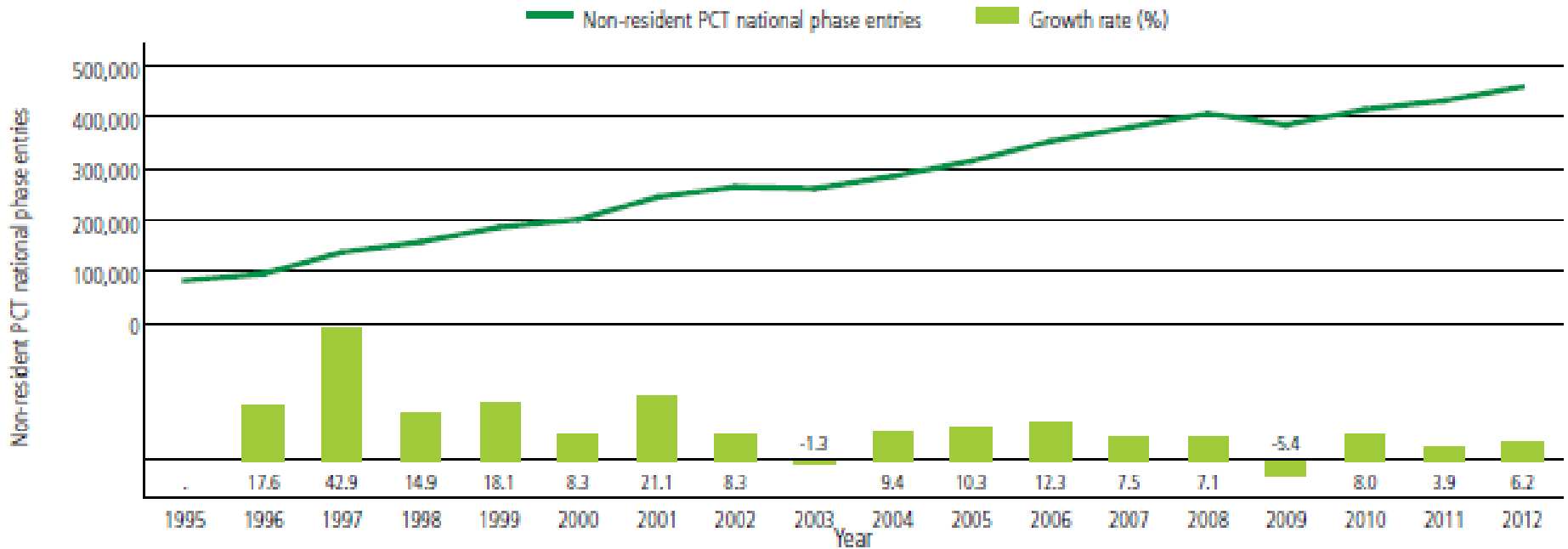


Note: 2012 data are WIPO estimates

Source: WIPO Statistics Database, March 2013

Filings increased in Korean by 14.6%, in Chinese by 12.8%, in Japanese by 7.7% and in English by 4.3% compared to 2011.

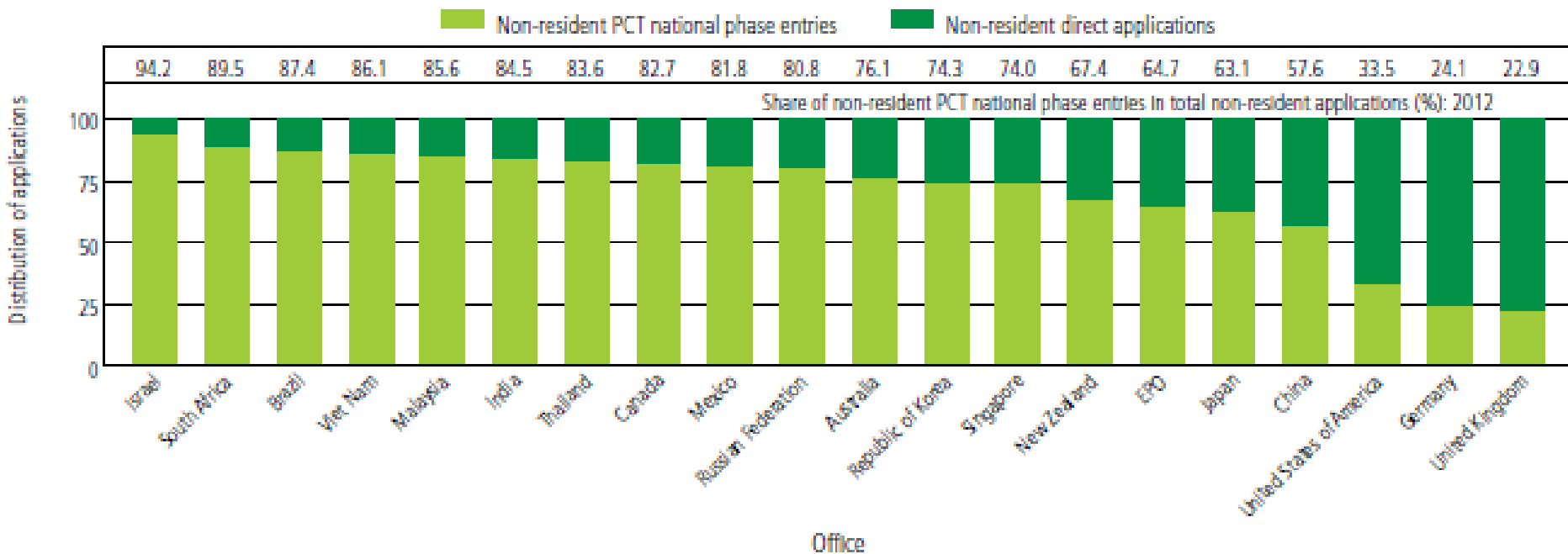
National Phase Entries



Note: Data refer to the international phase of the PCT system. Counts are based on the international application date.
 Source: WIPO Statistics Database, October 2013

458,800 non-resident national phase entries for 2012 (6.2% growth on 2011)
 540,200 total national phase entries (resident plus non-resident) for 2012

Share of PCT national phase entries in total non-resident filings by selected Patent Office for 2012



Source: WIPO Statistics Database, October 2013

Overall share of PCT National Phase Entries for non-resident applications around 54% in 2012.

International Authorities

■ International Search Reports

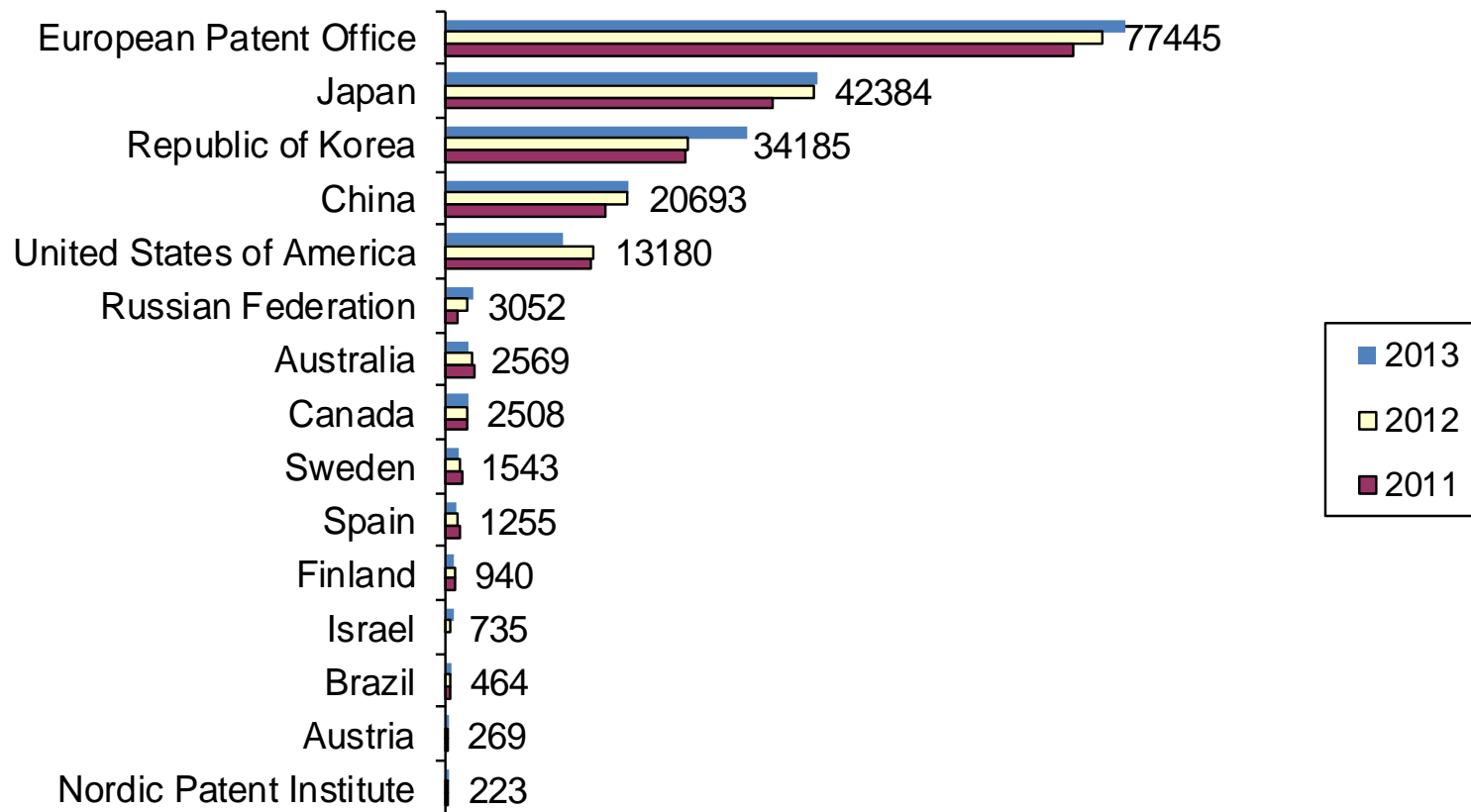
- Distribution by International Authority
- Timeliness of Transmission to International Bureau

■ Supplementary International Search Reports

■ International Preliminary Examination Reports

- Demand
- Distribution by International Authority
- Timeliness of Transmission to International Bureau

Distribution of ISRs established by ISA

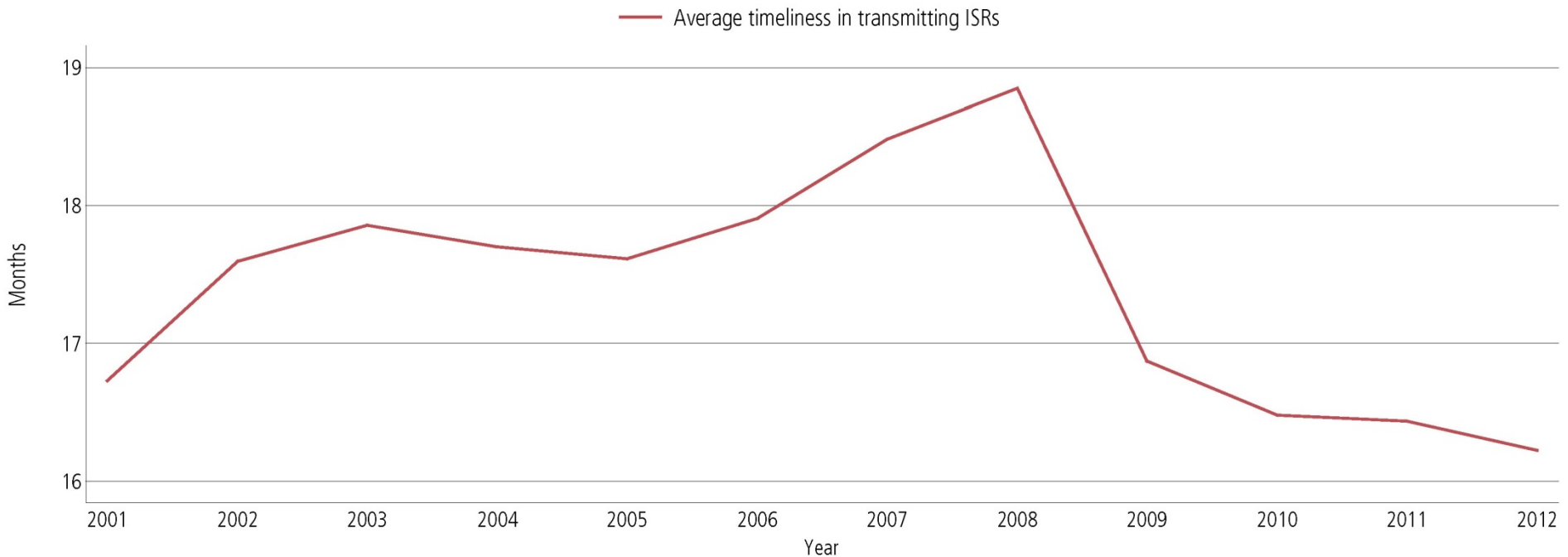


Note: 2013 data are WIPO estimates

Source: WIPO Statistics Database, February 2014

Data based on international filing year of application

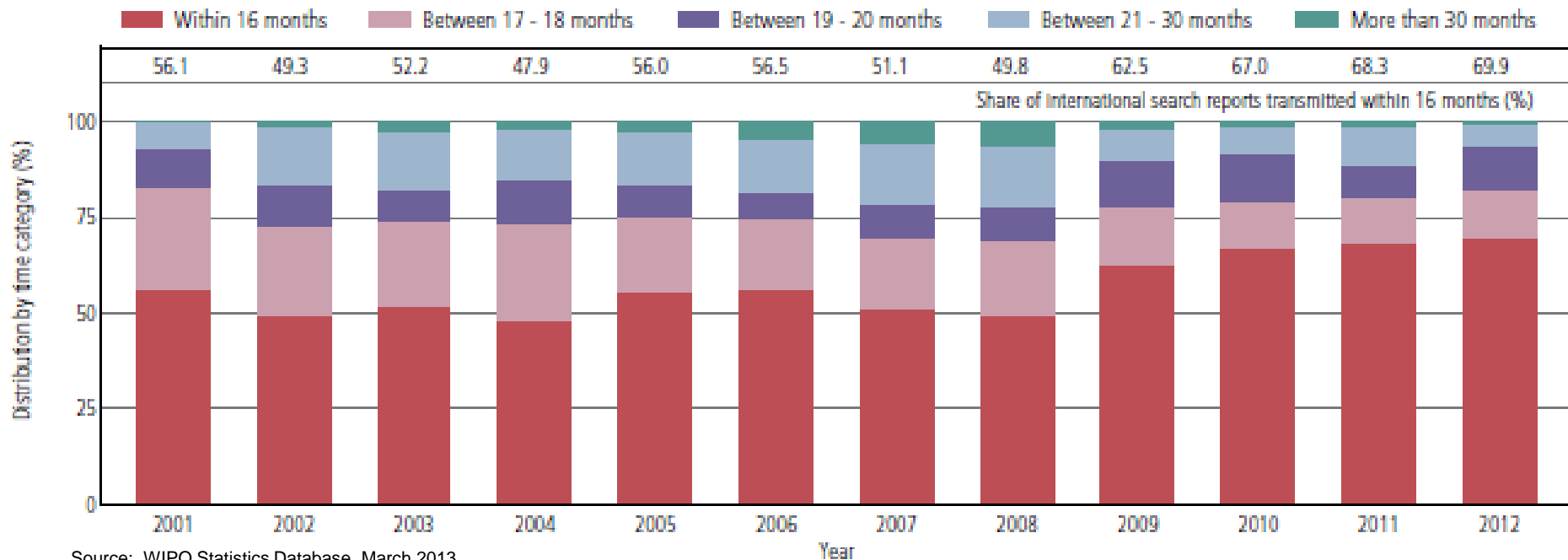
Average Timeliness in Transmitting ISRs to the IB



Source: WIPO Statistics Database, March 2013

- Average time between the priority date and the receipt of the ISR by the IB was 16.2 months in 2012, the shortest since 2001.
 - 69.9% of ISRs were received within 17 months in 2012 [68.3% in 2011].
- For 2013, 77.3% of ISRs were received within 17 months.

Timeliness in Transmitting ISRs



Timeliness calculated as time elapsed between priority date and date ISA transmits ISR to the International Bureau

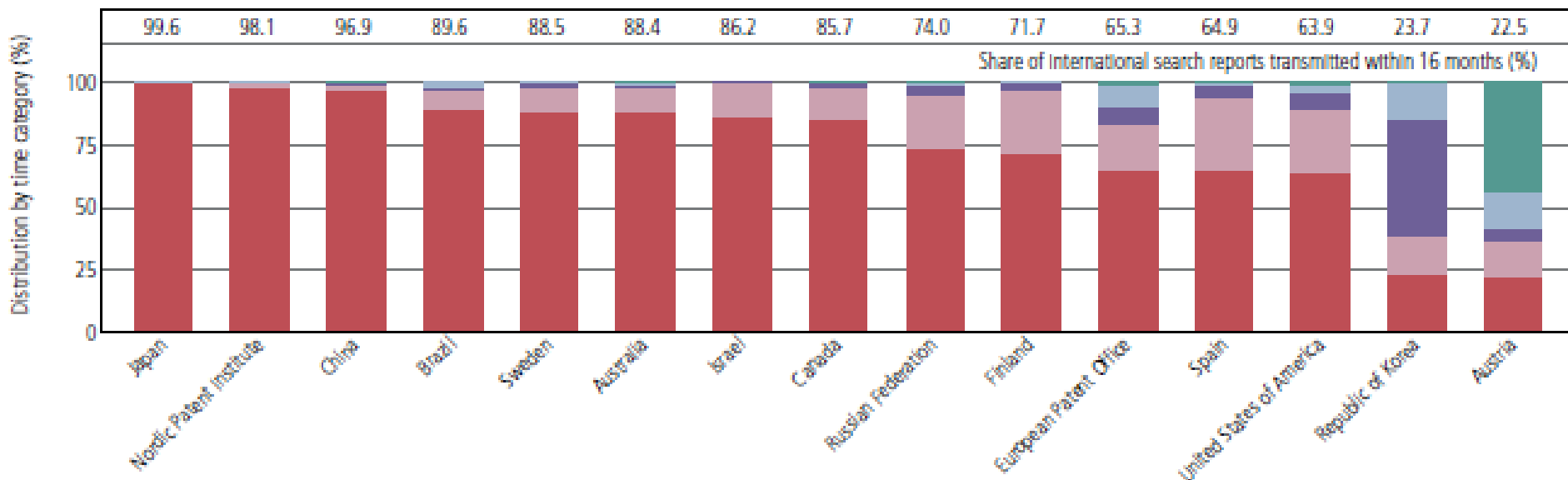
For 2013 (provisional) (2012 in brackets): <17 months 77.3% (69.9%), 17-18 months 13.6% (12.6%), 19-20 months 4.5% (11.0%), 21-30 months 3.8% (5.7%), >31 months 0.7% (0.7%)

Timeliness in Transmitting ISRs by ISA in 2012

Provisional share transmitted within 16 months for 2013 (for comparison)

99.6 97.8 97.1 90.3 75.1 90.8 69.4 87.1 77.3 75.6 65.5 70.4 65.4 67.9 53.5

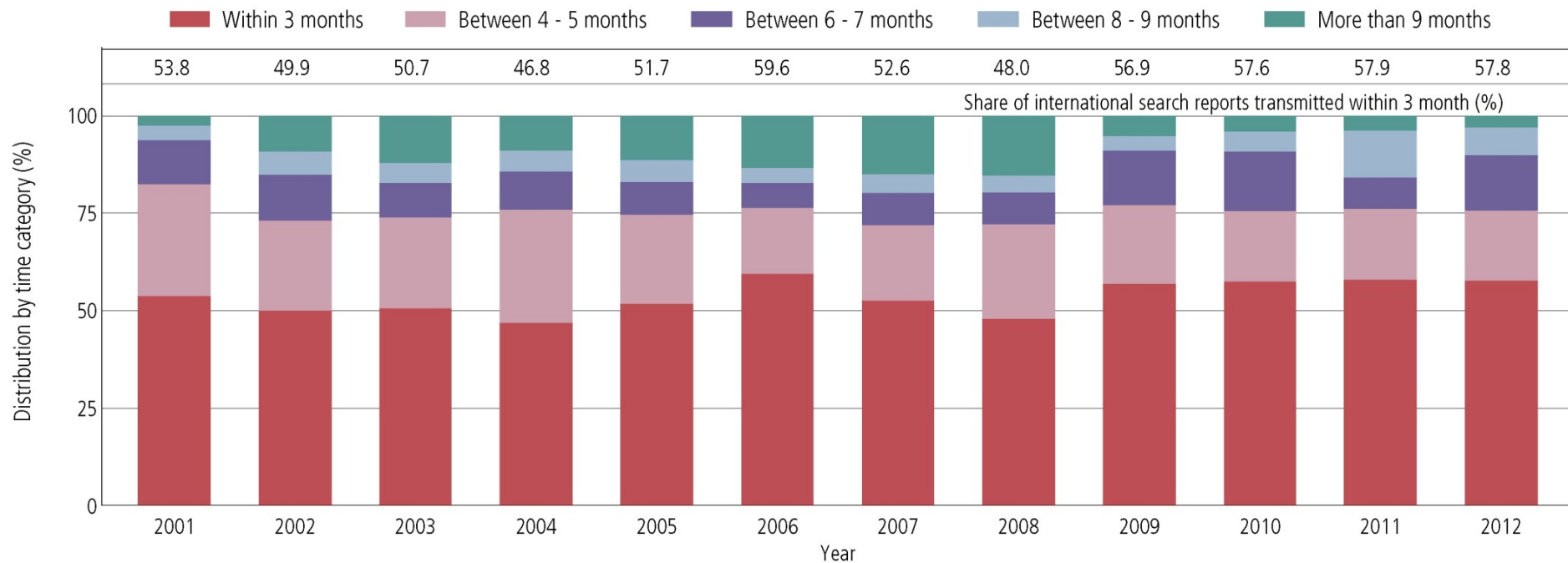
■ Within 16 months
 ■ Between 17 - 18 months
 ■ Between 19 - 20 months
 ■ Between 21 - 30 months
 ■ More than 30 months



Source: WIPO Statistics Database, March 2013

Timeliness calculated as time elapsed between priority date and date ISA transmits ISR to the International Bureau

Overall Timeliness in transmitting ISRs to the IB measured from Date of Receipt of Search Copy



Source: WIPO Statistics Database, March 2013

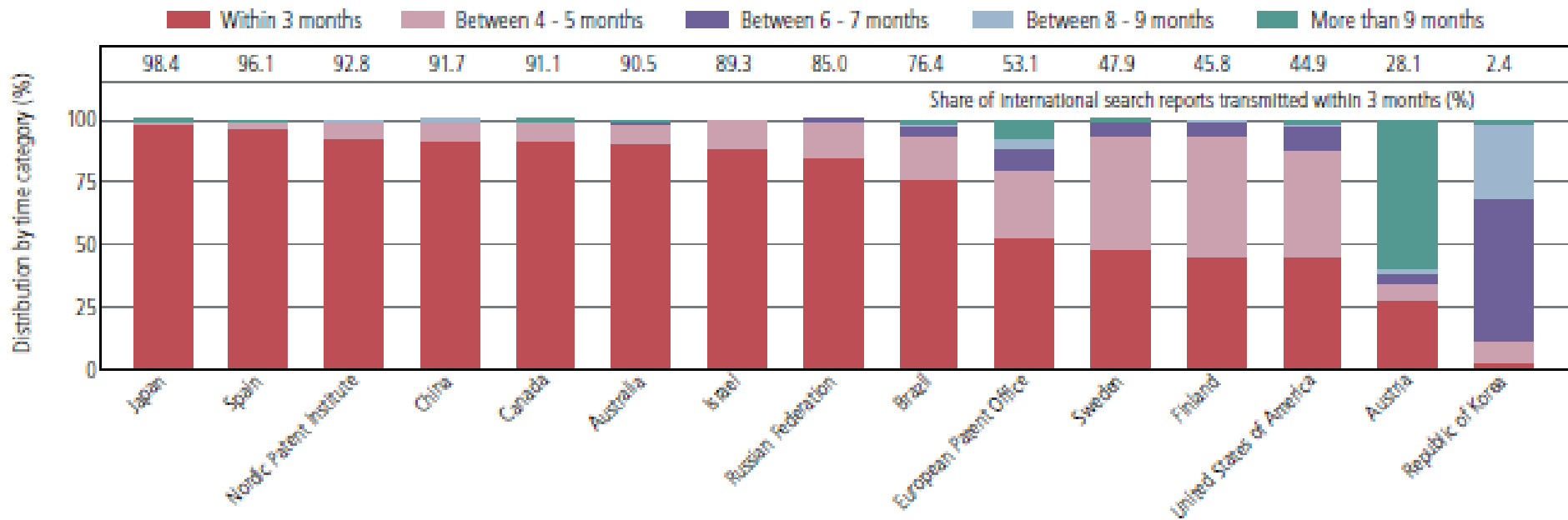
Excludes cases where the time limit of 9 months from the priority date applies

For 2013 (2012 in brackets): <4 months 65.9% (57.8%), 4-5 months 22.7% (17.9%), 6-7 months 7.0% (14.3%), 8-9 months 1.5% (6.9%), >9 months 2.9% (3.1%)

Timeliness in transmitting ISRs to the IB measured from Date of Receipt of Search Copy by Authority for 2012

Provisional share transmitted within 3 months for 2013 (for comparison)

99.1 96.8 93.6 95.7 93.7 92.6 65.4 52.9 85.0 53.3 22.6 52.3 59.2 64.0 41.0



Source: WIPO Statistics Database, March 2013

Distribution of SIS Requests

Supplementary International Searching Authority				
Year	2010	2011	2012	2013
Total	41	41	46	61
Austria		1	2	1
European Patent Office	3	7	21	27
Finland			1	
Nordic Patent Institute	1		3	
Russian Federation	35	31	19	32
Sweden	2	2		1

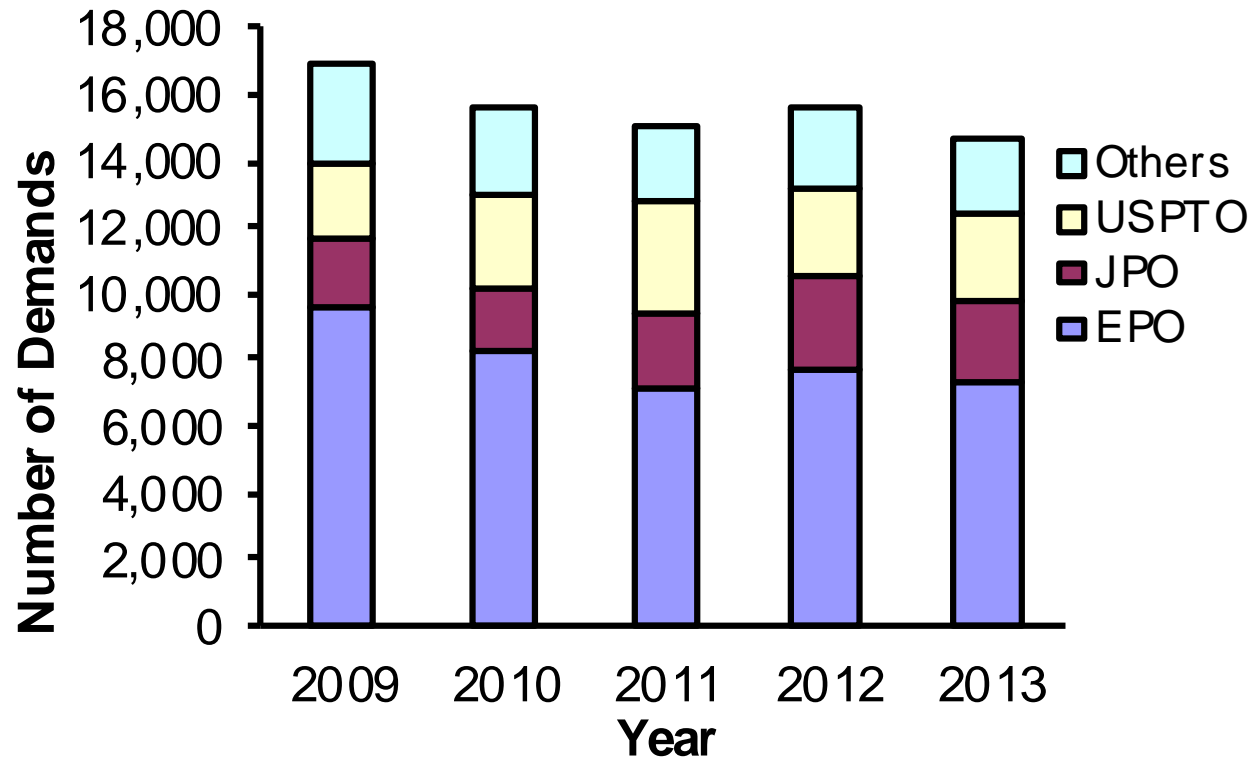
International Preliminary Examination Demands

IPEA_Name Year / Quarter	2007	2008	2009	2010	2011	2012	2013 to date	2013 to date
Total	19,523	18,134	15,264	13,907	13,741	14,212	10,013	%
Australia	872	865	789	745	780	753	499	5.0
Austria	100	103	68	36	17	14	14	0.1
Brazil				7	38	43	29	0.3
Canada	413	480	290	272	270	254	192	1.9
China	384	416	303	362	421	472	294	2.9
European Patent Office	10,586	9,861	8,592	7,918	7,393	7,760	5,852	58.4
Finland	151	154	144	123	125	106	61	0.6
Israel						1	16	0.2
Japan	2,555	2,122	2,152	2,121	2,446	2,661	1,732	17.3
Nordic Patent Institute			26	40	40	44	23	0.2
Republic of Korea	511	358	340	271	223	299	184	1.8
Russian Federation	121	97	66	76	83	117	62	0.6
Spain	125	107	142	123	120	84	65	0.6
Sweden	666	620	468	353	343	331	167	1.7
United States of America	3,039	2,951	1,884	1,460	1,440	1,272	822	8.2

2013 to date covers January to September 2013

17 Source: WIPO Statistics Database, January 2014

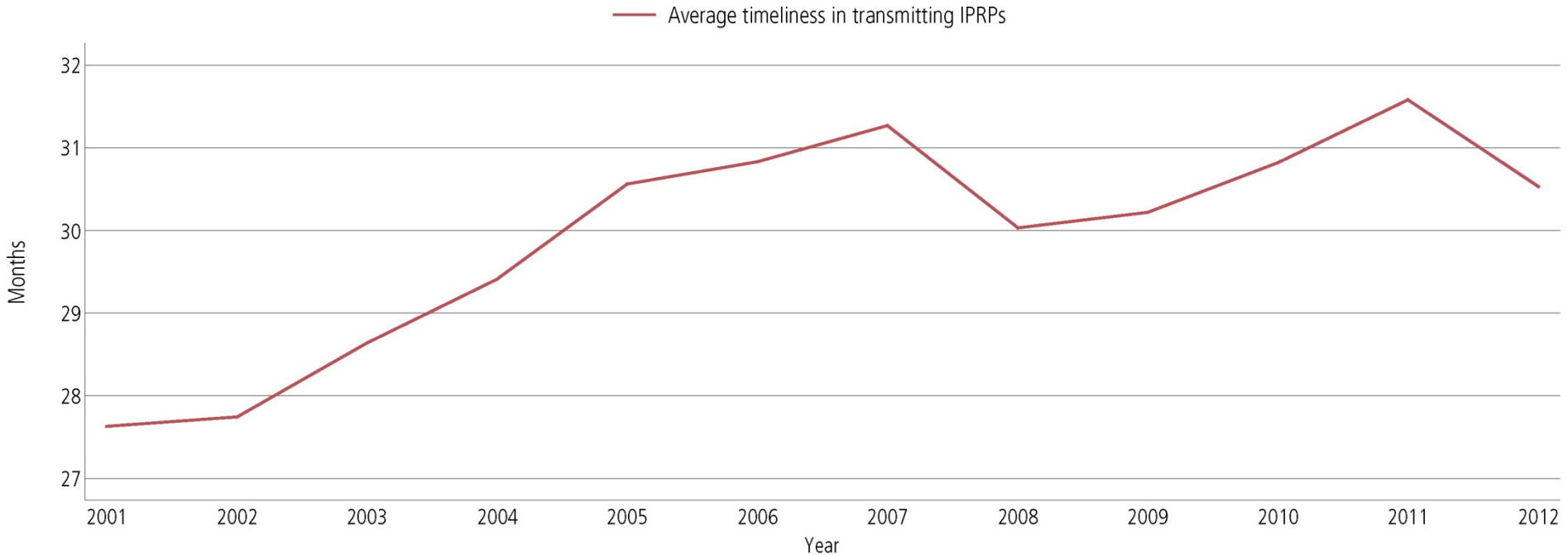
International Preliminary Examination Reports



Source: WIPO Statistics Database, February 2014 Data for 2013 are provisional

- For 2013, 49.8% of IPRPs (Chapter II) were produced by the EPO, 18.0% by the USPTO, 16.7% by the JPO, and 15.5% by other International Authorities.

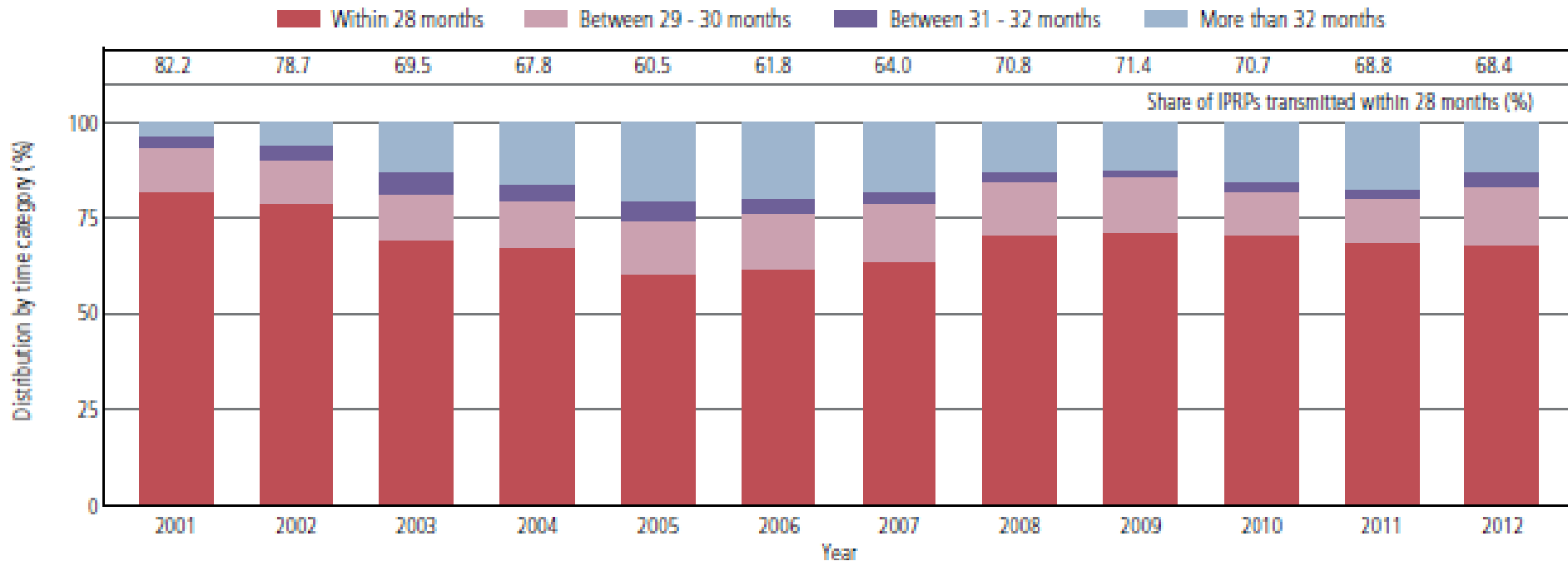
Average Timeliness in Transmitting IPRPs



Source: WIPO Statistics Database, March 2013

Average time taken to transmit IPRPs increased from 27.6 months in 2001 to 30.5 months in 2012. 68.4% of IPRPs transmitted within 28 months (72.8% for 2013 - provisional).

Timeliness in Transmitting IPRPs



Source: WIPO Statistics Database, March 2013

Timeliness calculated as time elapsed between priority date and date on which International Bureau receives IPRP form the IPEA.

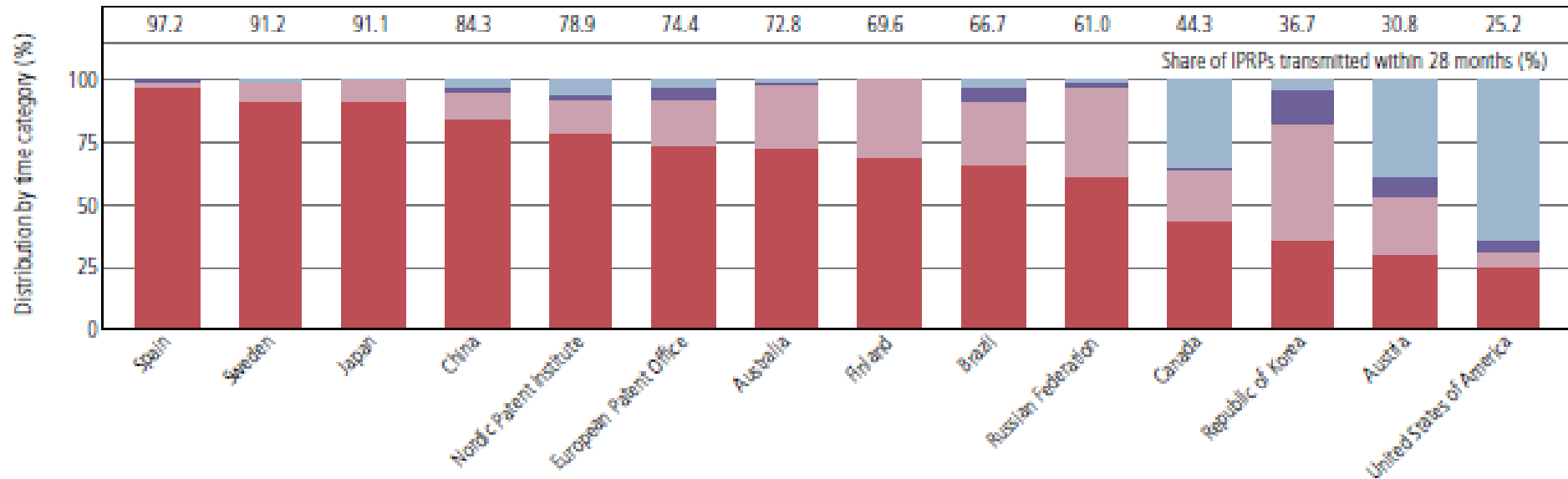
Provisional for 2013 (2012 in brackets): <29 months 72.8% (68.4%), 29-30 months 12.6% (15.1%), 31-32 months 2.7% (3.6%), >32 months 11.9% (12.9%)

Timeliness in Transmitting IPRPs by IPEA in 2012

Provisional share transmitted within 28 months for 2013 (for comparison)

94.1 87.6 91.6 95.2 93.8 80.0 81.3 66.3 68.0 40.8 66.7 51.8 28.6 33.1

■ Within 28 months
 ■ Between 29 - 30 months
 ■ Between 31 - 32 months
 ■ More than 32 months



Source: WIPO Statistics Database, March 2013

Timeliness calculated as time elapsed between priority date and date on which International Bureau receives IPRP form the IPEA.

PCT-Patent Prosecution Highway

Office of Filing

ISA/IEA	Office of Filing																					Total		
	JP	US	KR	CA	AU	DK	EP	FI	RU	AT	ES	MX	PT	SE	IL	NO	CN	IS	PH	CZ	PL		EA	ID
JP	2004	1314	198	-	-	0	475	0	0	-	1	6	0	5	0	0	519	0	17	-	0	0	0	4539
US	23	352	34	6	15	0	48	0	11	0	1	-	0	0	0	0	26	0	1	0	-	-	-	517
KR	32	2531	79	-	-	-	-	-	-	0	-	-	-	-	-	-	364	-	-	-	-	-	-	3006
CA	-	9	-	123	-	-	-	-	-	-	-	-	-	-	-	-	-	-	-	-	-	-	-	132
AU	-	257	-	-	27	-	-	-	-	-	-	-	-	-	-	-	-	-	-	-	-	-	-	284
EP	639	2017	-	-	-	-	-	-	-	-	-	-	-	-	-	-	-	-	-	-	-	-	-	2656
FI	0	50	-	-	-	-	-	-	1	0	0	-	-	-	0	-	0	-	-	-	-	-	-	51
RU	0	35	-	-	-	0	-	0	-	-	0	-	-	-	-	-	5	-	-	-	-	-	-	40
AT	-	25	0	-	-	-	-	0	-	-	-	-	-	-	-	-	-	-	-	-	-	-	-	25
ES	2	9	-	-	-	-	-	0	1	-	-	1	0	-	-	-	-	-	-	-	-	-	-	13
SE	18	94	-	-	-	-	-	-	-	-	-	-	-	1	-	-	-	-	-	-	-	-	-	113
IL	0	6	-	-	-	0	-	0	-	-	-	-	-	-	-	-	-	-	-	-	-	-	-	6
XN	7	63	-	-	-	-	-	-	-	-	-	-	-	-	-	-	-	-	-	-	-	-	-	70
CN	27	386	7	-	-	0	-	0	2	0	-	0	-	-	-	-	-	-	-	-	-	-	-	422
Total	2752	7148	318	129	42	0	523	0	15	0	2	7	0	6	0	0	914	0	18	0	0	0	0	11874

* As of the end of Jun 2013

Source: Patent Prosecution Highway Portal Site

22 11,874 PCT-PPH requests until end June 2013
28,600 standard PPH requests in same period

Further information:

2013 PCT Yearly Review
The International Patent System
WIPO Publication No:901E/2013

2013 World Intellectual Property Indicators
WIPO Publication No:941E/2013

Statistics on the PCT System
<http://www.wipo.int/ipstats/en/statistics/pct/>

Patent Prosecution Highway Portal Site
<http://www.jpo.go.jp/ppph-portal/index.htm>