

# Technological Innovation, Music, and IP in LAC

Dr. Bryan Khan | April 2025

University of Turin

[bryan.khan@unito.it](mailto:bryan.khan@unito.it) / [bkhan.mail@gmail.com](mailto:bkhan.mail@gmail.com)

*What is the impact of new tech on the creation, distribution and consumption of music*

*...How does IP adapt to these changes?*

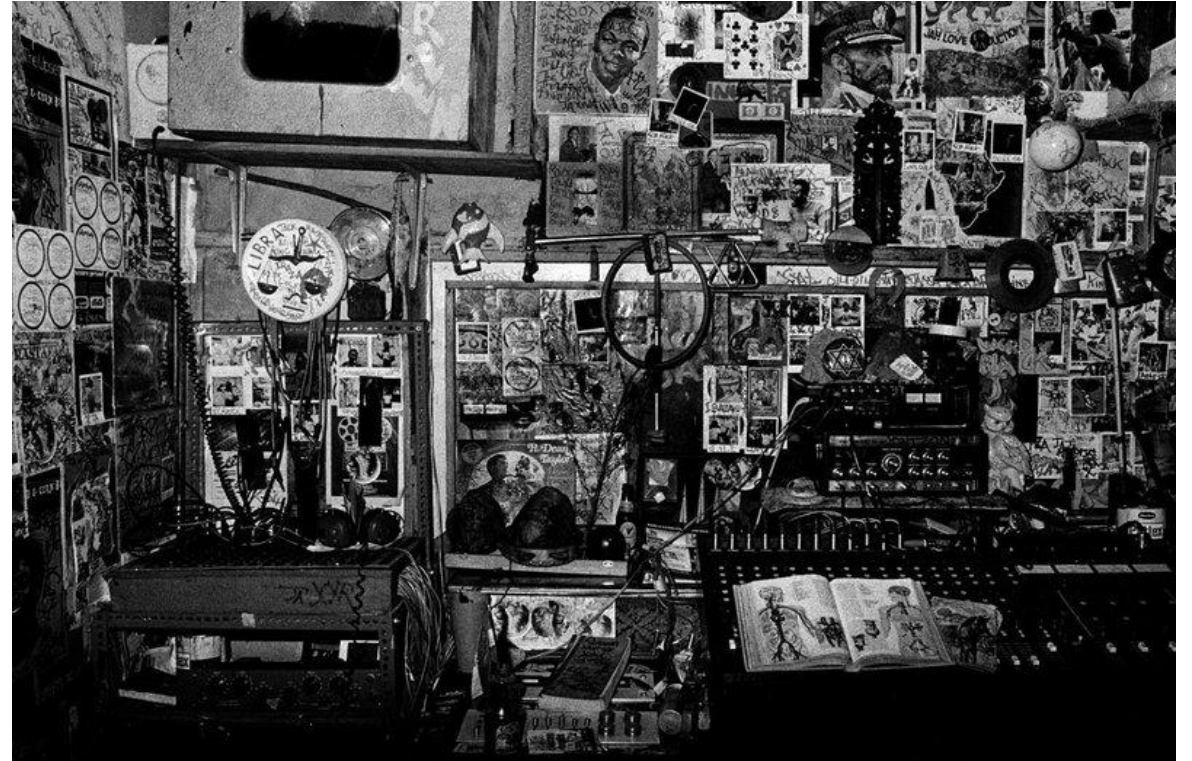
# LAC: A DEEP HISTORY OF MUSICAL INNOVATION

Instruments and Heritage drums | Recording and Studio Production | Distribution (10" acetate specials/riddims) | Commercial Innovation (Micro-labels)



The CLAEM Electronic Music Laboratory, Buenos Aires, 1964

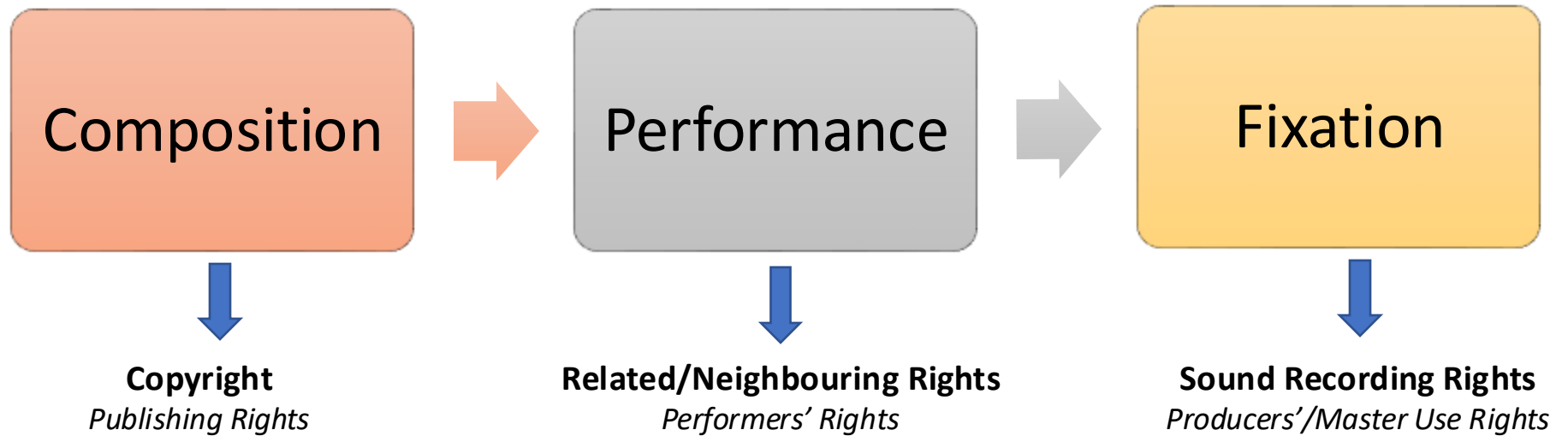
*Laboratorio de Música Electrónica del Centro Latinoamericano de Altos Estudios Musicales*



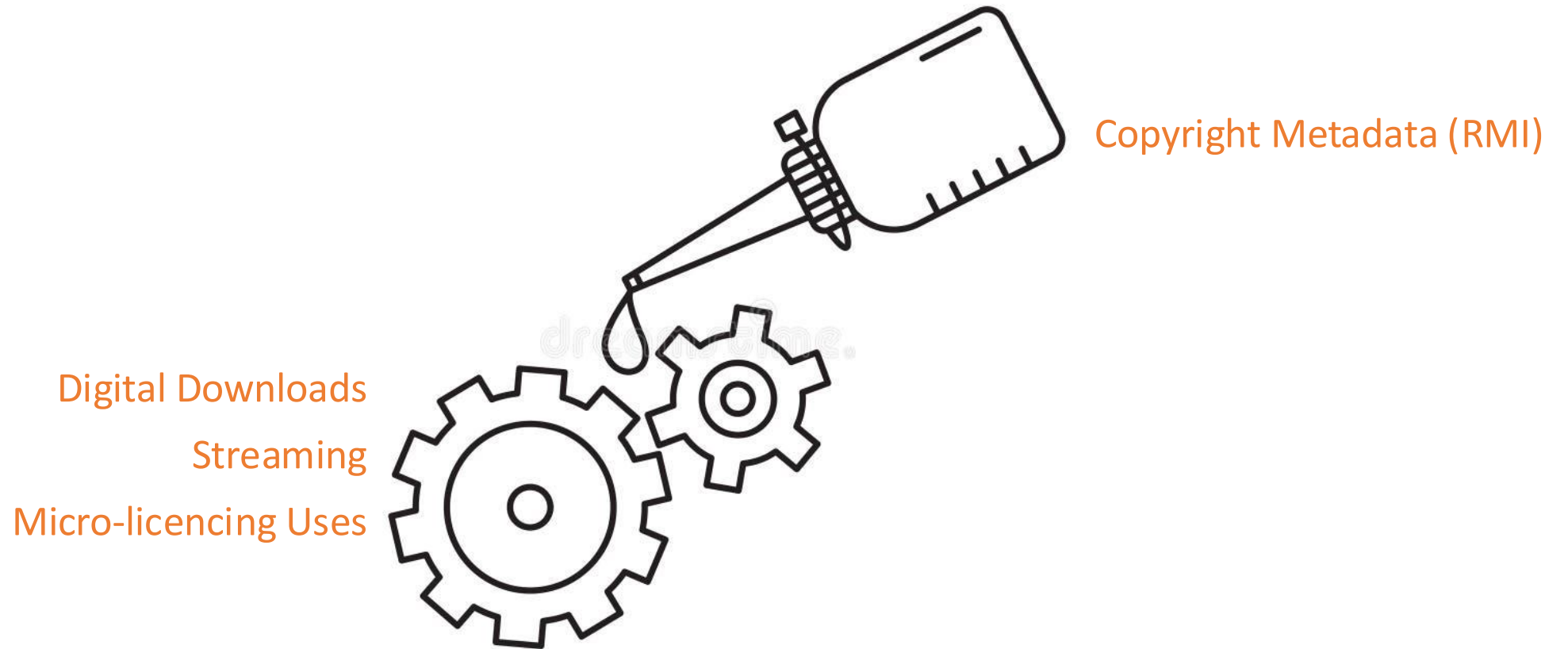
Control Room of Lee 'Scratch' Perry's Black Ark studio, Kingston, 1978

*Photograph by: Adrian Boot*

# TECHNOLOGY AND MUSIC CREATION

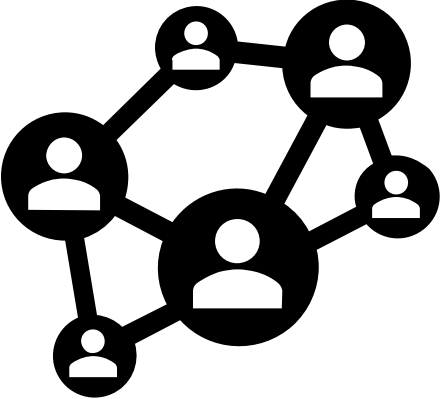
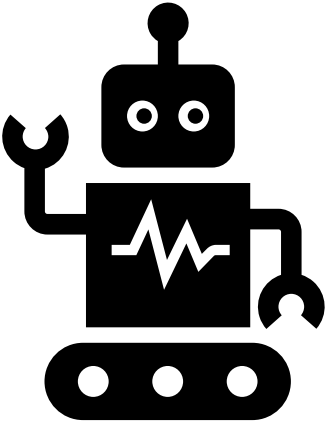


# TECHNOLOGY AND MUSIC DISTRIBUTION



# TECHNOLOGY AND MUSIC CONSUMPTION

## GENAI DISRUPTION



REVENUE DISPLACEMENT



DIRECT LICENCING MARKETS



MUSIC AS A PROCESS VS. MUSIC AS AN OUTPUT