



Printing PCT-EASY mode

Version Number 2.0

May 19, 2006



**WORLD INTELLECTUAL PROPERTY
ORGANIZATION**

GENEVA

PRINTING PCT-EASY MODE

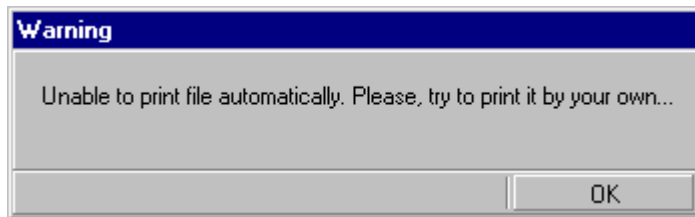
1.1 Printing with Acrobat Reader

Users who have any version of Acrobat Reader may find that the PCT-EASY 'original for submission' does not automatically print during the submission process.

1.2 To print the 'original for submission'

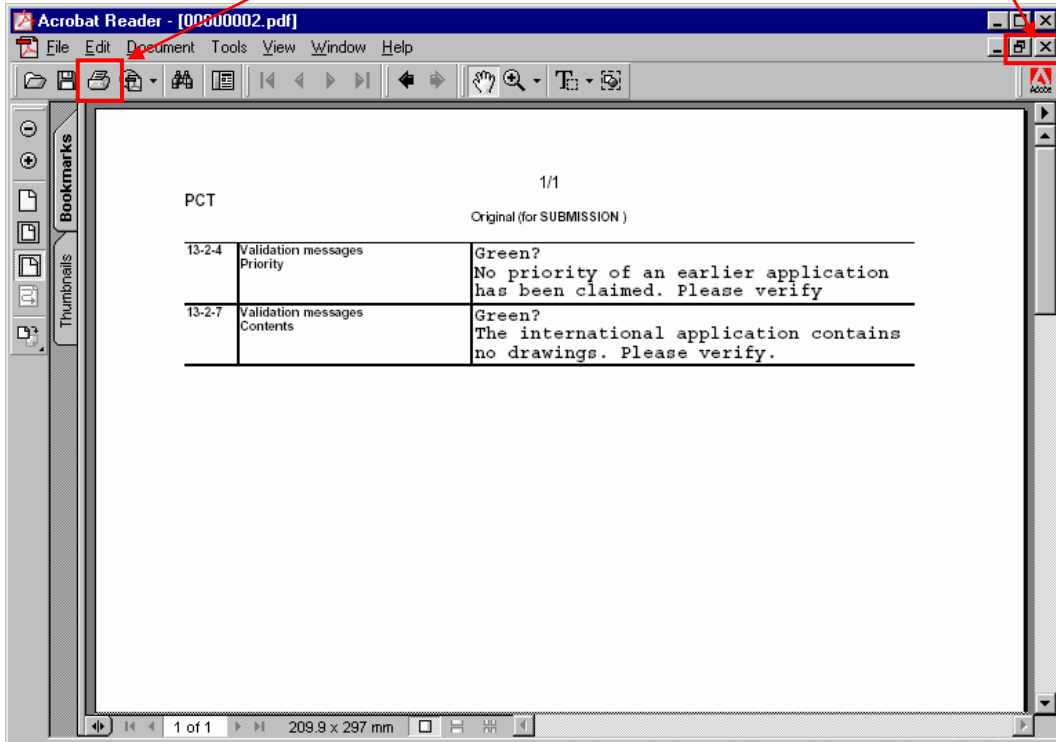
1.2.1 Click on OK in the print dialog window

During the submission process a standard print dialog box opens allowing the user to select the printer. If an automatic print of the PCT-EASY request form and Validation Log is not possible the following screen appears when the OK button on the print dialog is pressed to launch the print.



1.2.2 Click on OK

The Acrobat Reader window will open displaying either the validation log or the PCT-EASY request form. Print the open document from this window. Close this document. Do NOT close the Acrobat Reader Window. The other document will then be displayed.



Repeat the print from Acrobat Reader process for the other document. Closing only the document window after printing.

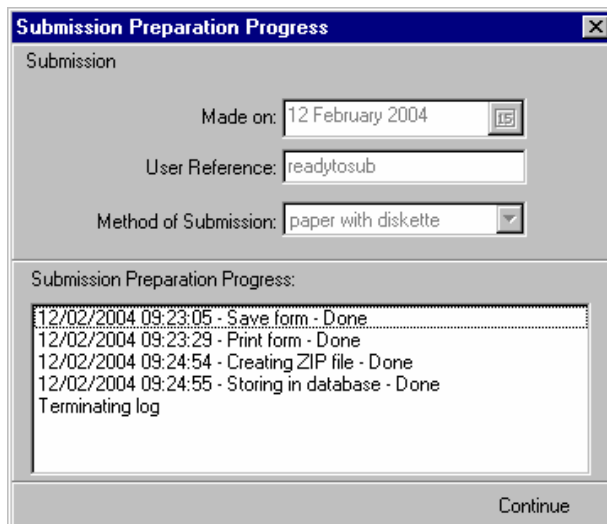
1.2.3 Printing completed

When all of the documents have been printed, and the Acrobat Reader window is empty, close the Acrobat Reader.



1.2.4 Return to Submission Preparation Progress dialog

After printing has been completed and the Acrobat Reader has been closed the system will return to the Submission Preparation Progress dialog.



Click Continue to proceed with the submission process. The Submission Preparation Progress dialog will close and the form will be moved to the Ready to Submit folder.