

DOCUMENT **Functional Specification Reclassification**

AUTHOR **Juriaan Hondius**

PURPOSE **Functional Specification**

DISTRIBUTION **Infotel, Jamie Cameron, Paul Daeleman, Trevor
Watson, Heiko Wongel**

VERSION **1.1**

PRODUCT-ID **T03.06**

PROJECT **IPC Reform MCD**

Document Control

Amendment History

Version	Date	Reviser	Description
0.1	30 June 2005	J. Hondius	initial draft
up to 0.3	21 November 2005	J. Hondius	with comments T. Watson, H. Wongel
0.3.1	3 February 2006	J. Hondius	synchronised with updated spec EIC
0.4	6 March 2006	J. Hondius	after questions Infotel
0.5	24 April 2006	J. Hondius	after questions Infotel updated document with change to OOB, FFL
0.6	26 April 2006	J. Hondius	after questions Infotel with comments H. Wongel
0.7	10 July 2006	J. Hondius	clarified rule to match IPC against RCL
0.8	30 August 2006	J. Hondius	changed checking RCL against Validity IPC
0.9	25 October 2006	J. Hondius	after questions Infotel (see [12]) changed checking RCL against Validity IPC expanded rule for Find Recl. Off. service incorporated comments P. Daeleman
1.0	10 November 2006	J. Hondius	changed rules in 'Store' process: - only process symbols related to reclassification - expand duplicate rules updated references
1.1	20 November 2006	J. Hondius	removed rule 5.1.1.a (so EPO can also process other files, e.g. from USPTO) changed rule 7.2.1.a (equivalent again to 4.2.1.a) added rule to 'Check Reclassification Results' corrected typo 9.2.2.a
1.2	15 December	J. Hondius	backed out rule 6.4.1

References

#	Project	Product-id	Title	Author	Vrsn
1	IPC Reform MCD	T02.02.03	User Requirements Definition Reclassification	J. Hondius	1.0
2	IPC Reform MCD	T04.02.01	Data Dictionary	J. Hondius	1.7
3	N/A	N/A	DOCAREA Physical Data model	B. Harle	2.5
4	IPC Reform MCD	T03.08.01	IPC Services	J. Hondius	2.5
5	IPC Reform MCD	N/A	Terminology IPC MCD Project	J. Hondius	N/A
6	IPC Reform MCD	T03.06.01	IS Working List	J. Hondius	1.1
7	IPC Reform MCD	T04.05.01	DTD EP IPCR Documents	J. Hondius	1.2
8	IPC Reform MCD		CLAIMS specification of IPC Revision Concordance List after the IPC reform	P. Fievet (WIPO)	1.0
9	IPC Reform MCD	T03.02.02	IPC-2006 Backfile Exchange	J. Hondius	1.5
10	IPC Reform MCD	T0x.0y.0z	Country table values	J. Hondius	
11	IPC Reform MCD	T03.09.01	Error codes ipcrmcd	J. Hondius	1.6
12	IPC Reform MCD	QRT03.06	Reclassification answers.doc	Infotel	0.7

Table of Contents

1	Introduction	6
1.1	Purpose of this document.....	6
1.2	Requirements traceability	6
1.3	General Remarks	7
1.4	Terminology:.....	8
2	Overall Process Flow.....	9
3	Check IPC Revision Concordances	10
3.1	Input	10
3.2	Check Concordances	10
3.3	Create Error and Control report	11
4	Collect Publications for Reclassification.....	12
4.1	Read Input.....	12
4.2	Find IPC for reclassification	12
4.3	Find reclassifying Office.....	13
4.4	Create Working Lists	13
4.5	Create Error and Control Reports	15
5	Reclassify Publications (EPO).....	16
5.1	Read Input.....	17
5.2	Find ECLA/ICO.....	17
5.3	Find IPC	17
5.4	Filter Revised IPC.....	18
5.5	Validate IPC	18
5.6	Default Indicators.....	19
5.7	Create Reclassified Publications File.....	19
5.8	Create Error and Control Reports	21
6	Store Reclassified Publications.....	22
6.1	Read Input.....	22
6.2	Validate Publications	23
6.3	Write to reload file.....	23
6.4	Validate IPC	23
6.5	Validate ST.8 Indicators.....	23
6.6	Rollup Advanced to core.....	25
6.7	Deactivate Old IPC ('D').....	25
6.8	Store new IPC('R')	25
6.9	Write Errors	26
6.10	Create Control Report.....	26

7 Process Automatic Reclassifications28

7.1 Read Input..... 28

7.2 Find IPC for reclassification 28

7.3 Validate IPC 29

7.4 Default Indicators..... 29

7.5 Rollup Advanced to core..... 29

7.6 Deactivate old IPC ('D')..... 30

7.7 Store new IPC ('R') 30

7.8 Create Error and Control Reports 31

8 Check Reclassification results32

8.1 Read Input - selection Criteria 32

8.2 Check for unrevised IPC..... 32

9 Exchange Reclassification results33

9.1 Read Input - selection Criteria 33

9.2 Extract IPC 33

9.3 Create Error and Control Reports 33

10 Standard exchanges34

11 Error Codes34

12 Find Reclassifying Office - Reclassification.....35

12.1 Input 35

12.2 Processing..... 35

12.3 Output 36

13 Files and Tables37

13.1 Files..... 37

13.2 New DB2 Tables..... 37

Appendix A - How reclassified symbols are sent & stored.....38

Appendix B - How reclassification changes families39

Appendix C - Detailed examples40

Appendix D - Logical Flows.....44

Appendix E - Selection Criteria overview45

1 INTRODUCTION

1.1 PURPOSE OF THIS DOCUMENT

This document describes the functionality of all Reclassification processes, to provide enough information for the technical design.

1.2 REQUIREMENTS TRACEABILITY

1.2.1. *Functional user requirements*

The functional specifications in this document support the functional user requirements as in [1] 'User Requirements Definition Reclassification'.

1.2.2. *Non-functional user requirements*

In addition to [1], the following non-functional user requirements were identified:

- IPC changed by a Reclassification process (table TDO174.IPC) must set a trigger for the weekly DOCDB exchange (the only reclassification processes that update MCD are 'Store Reclassified publications' and 'Process Automatic reclassifications')
- All processes run on demand. For storing reclassified documents received from offices, the intent is to centrally accumulate these, but process them ad-hoc. Exact details for technical design
- All processes must be rerun-able: producing the same output if the input did not change
- Selection Criteria will be provided in a parameter file, like for the Backfile processes
- No specific table has been defined to hold the IPC Revision Concordances. Any table definitions -if necessary- are up to the technical design
- Check Concordances should use the 'Validate IPC' service for validation against Validity IPC (DB2 version of the Validity File)
- Reclassification data are always delivered separately from Frontfile data (hence no check on proper use of the 'Original or reclassified' indicator is needed)
- Working lists must be put at some central location where reclassifying offices can pick them up. Defining the specific location is up to technical design
- MCD only accepts standard input [7], any Reclassified Publications sent in a different format will first be pre-processed by the Front-Office
- Check IPC Revision Concordances should be run before taking the files into production, to prevent inconsistent files entering into production.

1.3 GENERAL REMARKS

- Some of the reclassification processes use selection criteria. See Appendix F for more information on the purpose of the selection criteria
 - For selection criteria left blank, all values qualify -rather than none
 - One of the selection criteria can be the Concordance to-version: if used, the intent is to run all Reclassification processes for this same revision date
- If the Reclassification process results in unbalanced working lists, this will be solved manually
- Offices are expected to provide only one revision (one version-to date) per file, specified in the file heading (tag <ep-revision-to-date>. This to prevent complex rules for documents with multiple revisions in one file
- Offices do not have to send the full class picture, but only the reclassified 'R' and 'D' symbols
- It is important to minimise the workload for offices. For this reason, Core level symbols for which associated Advanced level symbols also exist within the family are not put on working lists. The revised Core level symbols will result from the Roll-Up of the revised Advanced level symbols - revision will no alter Advanced/Core relations, so it is not necessary to derive associated Core level symbols from the symbol to revise ('D')
- Offices may provide the full revision of the family, which includes Core level 'D' symbols associated to the revised Advanced level symbols, but if not provided, MCD will automatically deactivate these old Core level symbols.

So offices *must* provide:

- Advanced level 'D' and 'R' symbols
 - Core level 'D' and 'R' symbols, *not* covered by Rollup from an Advance level
- and offices *may* provide:

- Core level 'D' and 'R' symbols, covered by Rollup from an Advance level

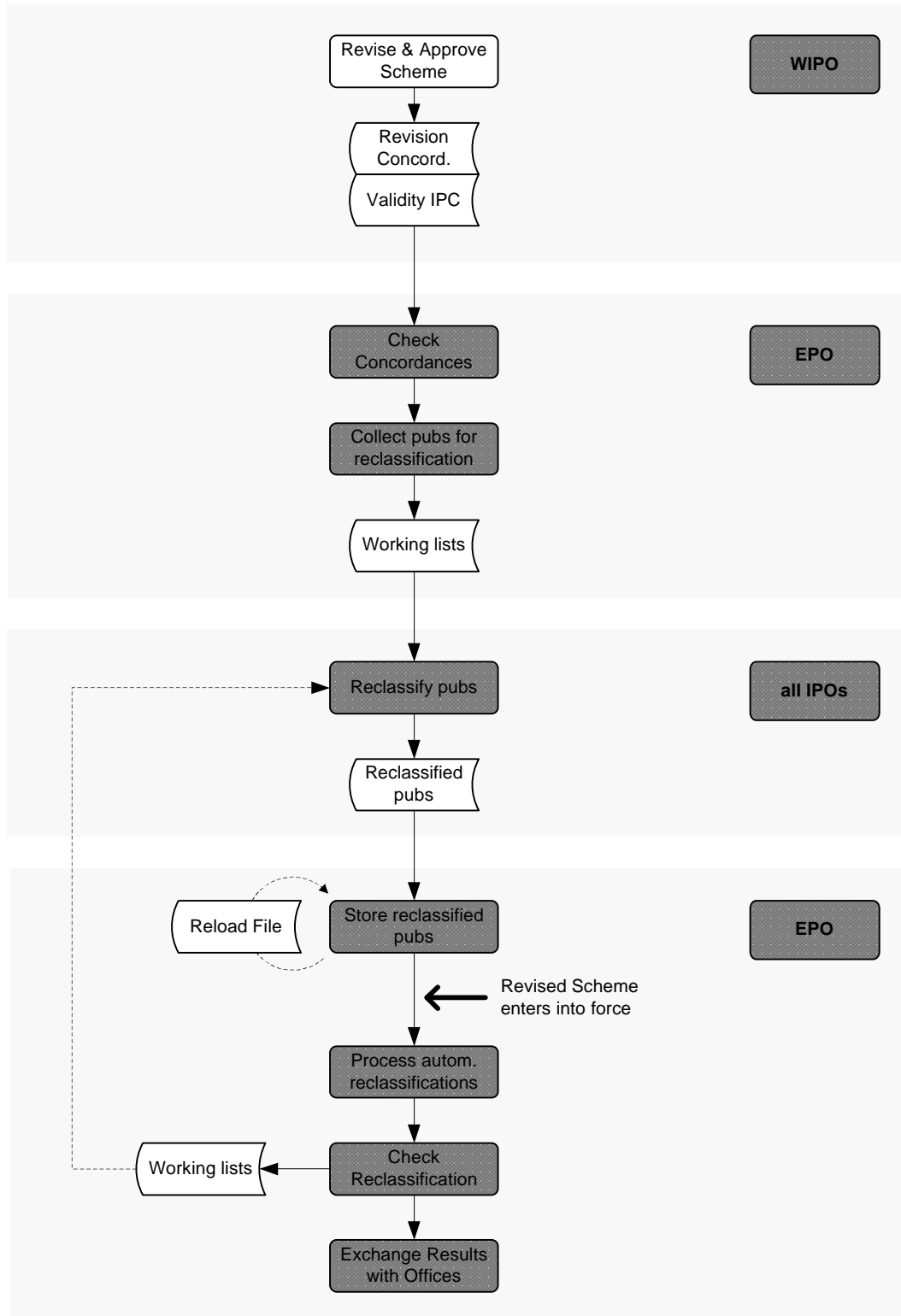
- Offices may confine themselves to providing one publication per family. MCD will make sure that all relevant symbols are deactivated for the whole family
- Reclassified IPC symbols ('R') sent by offices are validated against Validity IPC, but not against RCL. This is done for the convenience: when a reclassification results in some corrections to symbols outside of RCL, offices don't have to send these in separate files.
- A precondition (procedural) for the automatic reclassifications is that a correct version of the ECLA-IPC Concordance table is loaded
- Check Reclassification Results cross-checks allocated IPC in MCD against the Revision Concordance List. An alternative would be to cross-check against Validity IPC: all allocated IPC for which the validity period was closed in Validity IPC must be updated accordingly in MCD. This approach was not chosen, because such a check is not specific for a certain revision. As a general check it might be useful however
- the 'EP Reclassification' process creates a load file, to be subsequently loaded by the 'Store Reclassified IPC' process. An alternative would be to directly update MCD. The second alternative is simpler, however the first alternative offers the possibility to delay updating MCD, while already knowing the results of the reclassification. 'Automatic Reclassifications' however, directly updates MCD - because it processes all countries.

1.4 TERMINOLOGY:

- RCL: Revision Concordance List
- Validity IPC: the DB2 version of the Validity File
- 'IPC' in this document always refers to the Reformed IPC only. All older IPC versions (IPC1-8) are excluded from the Reclassification process
- terminology as from-date, to-date, from-version, to-version is only used when referring to the RCL, or Validity IPC. For allocated IPC there is simply one version: the ST.8 'Version Indicator'
- 'D', or 'R' symbols refer to IPC symbols with their 'Original or Reclassified data' indicator being 'D', or 'R'
- Deactivating old IPC symbols means setting them to 'D' as a result of the reclassification. The corresponding validity period in Validity IPC was closed (version-to-date has a value)

2 OVERALL PROCESS FLOW

The overall flow of the reclassification process is:



3 CHECK IPC REVISION CONCORDANCES

The RCL will be delivered together with the Validity File. EPO will check the consistency between those two files and the correctness of the concordances of the RCL.

3.1 INPUT

- RCL (XML), see [8] for the file specification
- Selection Criteria:
 - Concordance to-version (optional, only one value allowed): only concordances with the <rcl to-version> equal to the one(s) given in the selection criteria will be checked
 - If not provided, check all.

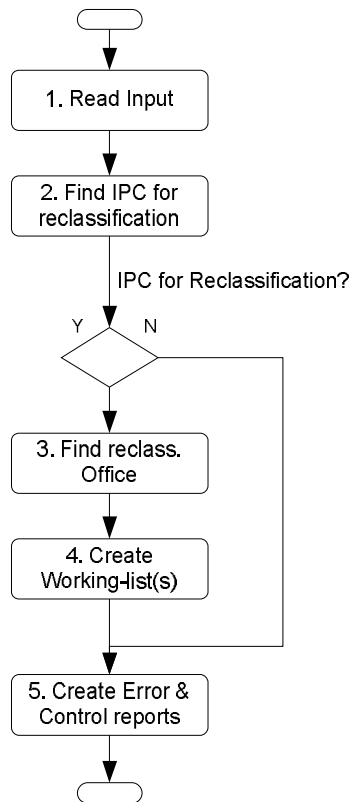
3.2 CHECK CONCORDANCES

1. MCD checks the RCL according to the selection criteria and the following rules:
 - a. Concordance From symbols exist in the Validity File as revised symbols:
 - the symbols exist in the Validity File with a validity-from-date \leq RCL from-version. If not, issue warning W038
 - their classification levels correspond with the ones in the Validity File:
 - advanced level symbols may have classification-level 'A', or 'C' (in Validity IPC)
 - core level symbols may have classification-level 'O', or 'C' (in Validity IPC)
 - If not issue warning W039
 - their validity period is closed in the Validity File: the corresponding validity-to-date is set to RCL to-version minus 1 day. If not, issue warning W040
 - b. Concordance To symbols exists in the Validity File as new symbols:
 - the symbols exist in the Validity File with a validity-from-date = RCL to-date. If not, issue warning W038
 - their classification level corresponds with the ones in the Validity File:
 - advanced level symbols may have classification-level 'A', or 'C' (in Validity IPC)
 - core level symbols may have classification-level 'C' (in Validity IPC)
 - If not issue warning W039
 - their validity period is open in the Validity File: the corresponding validity-to-date is empty. If not, issue warning W040
 - c. Classification (non-indexing) from-symbols are revised into at least one classification (non-indexing) to-symbol:
 - a concordance from-symbol must have at least one related concordance to-symbol in the Validity File with entry-type = 'K', or 'D'
 - If not, issue warning W041

3.3 CREATE ERROR AND CONTROL REPORT

1. MCD writes all warnings to the error report; see also Chapter 'Error Codes', together with the concordance and its related Validity File IPC (if available)
2. MCD writes the following counts to the control report:
 - a. General Information:
 - Date and time the procedure was run
 - The selection criteria of the process
 - b. Total number of:
 - <rcl> elements read
 - <concordance from-symbol> elements read
 - <concordance-to to-symbol> elements read
 - <concordance from-symbol> elements with warnings
 - <concordance-to to-symbol> elements with warnings

4 COLLECT PUBLICATIONS FOR RECLASSIFICATION



4.1 READ INPUT

1. Input to this process are selection criteria, which are:
 - a. Concordance to-version (optional, only one value allowed): only concordances with the to-version equal to the one given in the selection criteria will be processed
 - b. If not provided, process all.

4.2 FIND IPC FOR RECLASSIFICATION

To find IPC that must be reclassified, the allocated IPC is matched with the RCL, including the Version Indicator. Reasons for this restriction: when a revision process is run multiple times, symbols should not be selected twice for reclassification. This may happen if e.g. A1 is revised into A1, A2, A3: a revised symbol can still be A1 and should be excluded during a re-run.

IPC with incorrect Version Indicators would be detected during 'Check Reclassification Results', put on a separate working list and possibly corrected - although in theory no invalid Version indicators should be present in MCD at all.

1. MCD determines what families must be reclassified manually: these are families with IPC symbols that
 - a. match with from-symbols of 1:N concordances in the RCL (qualifying the selection criterion)
 - a match means IPC Symbol & Classification level are equal and Version Indicator is smaller (older), or equal to the concordance from-version (so symbols part of older revisions are also included)

- a 1:N concordance is a <concordance-from-symbol> with more than one related <concordance-to-symbol>
2. MCD excludes from reclassification all:
- a. IPC marked 'D' (Original or Reclassified data)
 - b. pre-published publications. If this rule leaves no published publication to reclassify, MCD skips the family from reclassification (it will be detected during 'Check Reclassification')
 - c. Core level symbols for which one, or more Advanced level symbols that are also part of the same revision project exist within the family (at publication and/or family level)
remark: for these excluded symbols, the new Core level 'R' symbols will be provided by the roll-up of the revised Advanced level symbols while the old Core levels will deactivated automatically - during Store Reclassified IPC, see rule 6.7.3.

4.3 FIND RECLASSIFYING OFFICE

1. For each family that must be reclassified manually, MCD calls the 'Find Reclassifying Office' service with PublicationID of the family
2. MCD uses Reclassifying Office returned by the service for further processing. If the service returned an error MCD stops processing the family and passes the error to the error report

4.4 CREATE WORKING LISTS

1. MCD applies the following rules for putting IPC Symbols on the working lists:
 - a. workinglists are created per country
 - b. Advanced Level Offices receive all symbols to be revised within the family (both Advanced and Core level symbols)
 - c. Core Level Offices only receive Core Level symbols:
 - the symbols to be revised for their own publications at publication level
 - all the symbols to be revised at family level
 - d. exclude from the working lists all Core Level symbols for which one, or more associated Advanced Level symbols that are also part of the same revision project are present (= rule 2.b)
2. If 'Find Reclassifying Office' returned one, or more Core Level Offices (Office Type = Core), MCD determines which ones appear on the working list:
 - a. If Core Level IPC to be revised exists at family level: all offices
 - b. else all offices with Core Level IPC to be revised for their publication
3. For each family to reclassify MCD writes all relevant family information to the working lists:
 - a. all IPC symbols at family level (the ones for reclassification and all others)
 - b. all IPC at publication level and their publicationIDs (the ones for reclassification and all others).
 - c. all other publicationIDs of the family¹

¹ put on the working list, because one of them could be the publicationIDs of the Reclassifying Office

- d. all active priorities (the priorities are sent for informational purposes only)
 - e. all applicationIDs
4. This maps to the working list elements as follows:
- a. <ep-working-list
 - <revision-to-date>: set to the Concordance to-version being processed
 - <control-number>: set to filename of the Working List
 - <ep-reclassifying-office>: set the CC of the office for which the working list is created
 - <list-kind>: set to 'W'
 - <date-produced>: set to SYSTEM DATE
 - b. <ep-patent-family>: each occurrence of this tag represents a family, where:
 - <ep-classifications-ipcr-to-revise>: holds all IPC symbols that need reclassification (as determined in rule 1.)
 - symbols stored at publication level under <ep-ipcr-document>
 - symbols stored at family level under <ep-patent-family>
 - <ep-classifications-ipcr>: holds all other IPC symbols (don't need reclassification)
 - symbols stored at family level under <ep-patent-family>
 - symbols stored at publication level under <ep-ipcr-document>
 - <publication-reference>: holds all publicationIDs within the family
 - <application-reference>: holds all applicationIDs within the family
 - <ep-priority-applications>: holds all active priority numbers of the family
 - c. all other attributes not mentioned above can be left empty
5. MCD makes the working lists available for offices -see I/O Chapter

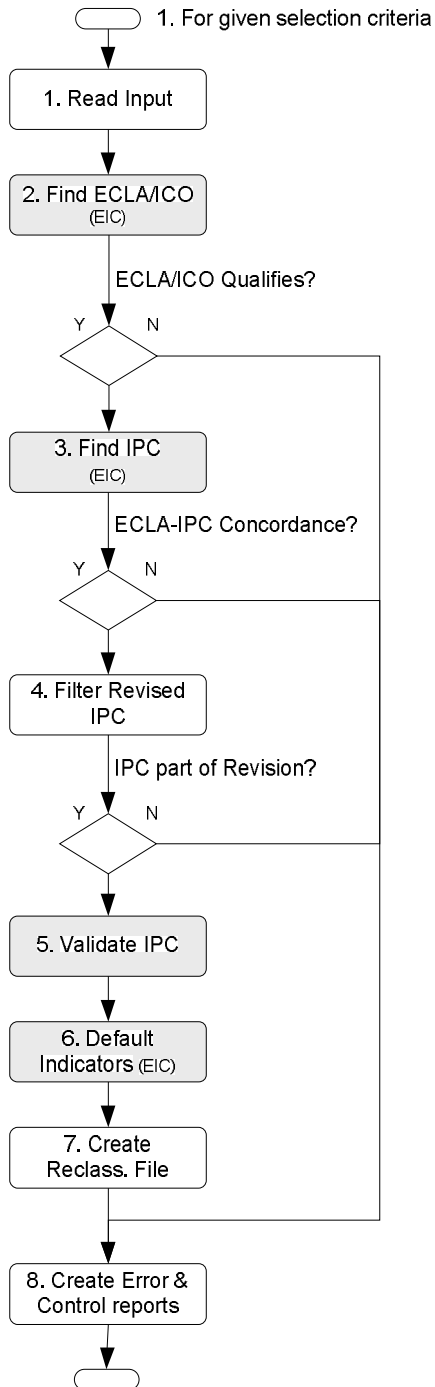
4.5 CREATE ERROR AND CONTROL REPORTS

1. MCD writes all warnings/errors to the error report; see also Chapter 'Error Codes'
2. MCD updates the report counts for all process steps as indicated in the logical process flow:
 - a. General Information:
 - Date and time the procedure was run
 - The selection criteria of the process
 - b. Total number of:
 - families that need reclassification
 - fam.lvl. IPC Advanced symbols sent for reclassification
 - fam.lvl. IPC Core symbols sent for reclassification
 - fam.lvl. IPC Subclass symbols sent for reclassification
 - pub.lvl. IPC Advanced symbols sent for reclassification
 - pub.lvl. IPC Core symbols sent for reclassification
 - pub.lvl. IPC Subclass symbols sent for reclassification
 - c. Above numbers totalled per:
 - working list
 - grand total

5 RECLASSIFY PUBLICATIONS (EPO)

Grey shaded (EIC) steps: reusable functionality from ECLA-IPC Conversion

Reclassify Pubs (EPO)



1. Read Input: read the working list and the selection criteria (for EIC part)
2. Find ECLA/ICO: all ECLA/ICO that qualify the selection criteria, for all families
if no ECLA/ICO qualifies the selection criteria go to 8, else continue
3. Find IPC: find the IPC concordance for the ECLA/ICO symbol
if no concordance is found go to 8, else continue
4. Filter IPC: only IPC part of the latest revision qualifies
if IPC is not part of the latest revision go to 8, else continue
5. Validate IPC: validate the symbol and retrieve information to set the ST.8 indicators
6. Default all ST.8 indicators
7. Create reclassification file: write all 'D' and 'R' symbols to file - to be loaded by 'Store Reclassified Publications'
8. Create Error and Control report: update counts for the control reports and write errors

5.1 READ INPUT

1. MCD reads the working-list created for the EPO to determine what families it must reclassify
 - a. each occurrence of the <ep-patent-family> tag represents a family
 - b. the <ep-working-list revision-to-date> provides the <concordance to-date> to process
2. MCD reads other selection criteria similarly to ECLA-IPC, see further below.

5.2 FIND ECLA/ICO

1. MCD retrieves all families in DOCDB that must be reclassified according to the working list
 - a. if a family is not found (should not, or rarely occur) MCD issues error E033 and stops processing this family
2. MCD executes the ECLA-IPC Conversion upon selection criteria:
 - a. select all ECLA symbols that were added to a family after a certain date
 - b. select all documents having an ECLA symbol in a specific range
Example: ECLA/ICO in (A01C2/, A01C*, A01B17/00 - D01B1/11)*
It must be possible to enter any logical combinations of selection criteria (*as in [EIC]*)
 - c. exclude all ECLA/ICO symbols that have one, or both of the statuses:
 - 'Not Yet Approved' (APPROVED_IND, a scheme property)
 - 'Proposed' (PROPOSED_IND, an allocation property)

5.3 FIND IPC

all grey as in [EIC]

1. For each ECLA/ICO found, MCD calls the ECLA-IPC Concordance service with the formatted ECLA/ICO symbol
2. Based upon the following output from the service:

- a. ECLA/ICO is not in Concordance table: MCD issues error message EIC2, with ECLA/ICO in Error Text, writes the symbol to control report2 and discards the symbol
 - b. ECLA/ICO has no corresponding IPC, but '*' is given: MCD writes the symbol to control report3 and discards the symbol
 - c. ECLA has no corresponding IPC: MCD discards the symbol
 - d. ICO has no corresponding IPC: MCD discards the symbol
 - e. ECLA/ICO has corresponding IPC: MCD retrieves the corresponding IPC symbol.
3. if no IPC could be derived for a family at all, MCD issues warning W034 (warning, because it is not necessarily wrong if this happens)

5.4 FILTER REVISED IPC

Only IPC that was part of the revision indicated in the workinglist is eligible for ECLA-IPC Conversion.

1. MCD checks for each IPC symbol if it is present in the RCL, for the revision period being proceed (<rcl to-version> matches <ep-working-list revision-to-date>):
 - a. all IPC symbols found in the RCL will be further processed
 - b. all IPC symbols not found in the RCL will be discarded
2. if no IPC remains for a family, MCD issues warning W043 (these families will be reclassified manually by EPO)

5.5 VALIDATE IPC

all grey as in [EIC]

Although the IPC symbols should be valid (concordance table) MCD validates them to retrieve the correct Version Indicator.

1. For each input IPC symbol, MCD calls the IPC Service 'Validate IPC' with the following input:
 - a. IPC symbol: formatted as ST.8, pos. 1-19
 - b. Validation Date: set to Maximum(System Date, rcl to-version)
 - c. Classification Level: set to 'A' (so service issues warning if different in Validity IPC)
2. Based upon the output from the service:
 - a. if a valid symbol: continue processing the symbol
 - b. if not a valid symbol (service error E018, or E019): stop processing the symbol
 - c. always write any error as issued by 'Validate IPC' to the error report, logging the original Publication ID and the complete IPC symbol as 'Error Text'

5.6 DEFAULT INDICATORS

all grey as in [EIC]

1. For all IPC derived, MCD defaults all ST.8 indicators as follows:
 - a. Version Indicator:
 - use value returned by the IPC Service
 - issue warning W042 if different from the revision period given in the workinglist (<ep-working-list revision-to-date>) - all reclassifications should be part of the same revision
 - b. Classification Level: as returned by the IPC Service. If the service does not return 'A': issue error E047 and exclude the symbol from processing
 - c. first or later position of symbol: Set to spaces
 - d. Classification value:
 - “I” for IPC derived from ECLA, and not an indexing code
 - “N” for IPC derived from ICO, or an indexing code
 - e. Action date: date of running the procedure (YYYYMMDD)
 - f. Original or Reclassified data: Fixed value “R”
 - g. Source of classification data: Fixed value “M”
 - h. Generating office: Fixed value “EP”

5.7 CREATE RECLASSIFIED PUBLICATIONS FILE

1. MCD determines which IPC symbols must be deactivated (set to 'D'): these are all IPC Symbols present in the RCL as a from-concordance, for the revision period given in the working-list (<ep-working-list revision-to-date>)
2. MCD puts all reclassified publications in one output file:
 - a. all old IPC symbols (both family and publication level) that must be deactivated with:
 - Original/Reclassified indicator set to 'D'
 - Action Date set to System Date
 - All other ST.8 indicators as they were stored
 - b. all new IPC symbols that must be added with original/reclassified indicator set to 'R'
3. Since Reclassified Publications File is on publication level (not on family level, like the working list) MCD selects the PublicationID of the family's (*) Document for all 'R' and family level 'D' symbols. if no (*) Document is found, any other document will do
4. MCD rejects all duplicate IPC symbols (identical Classification symbol, Version Indicator and Classification level), applying the following rules
 - a. when both Class Values 'I' and 'N' were derived, keep the 'I'
 - b. do not include the counts for the duplicates in the control report.
5. MCD writes the reclassifications to the Reclassified Publications File see [7], its elements must be populated as follows:
 - a. <ep-ipcr-documents>

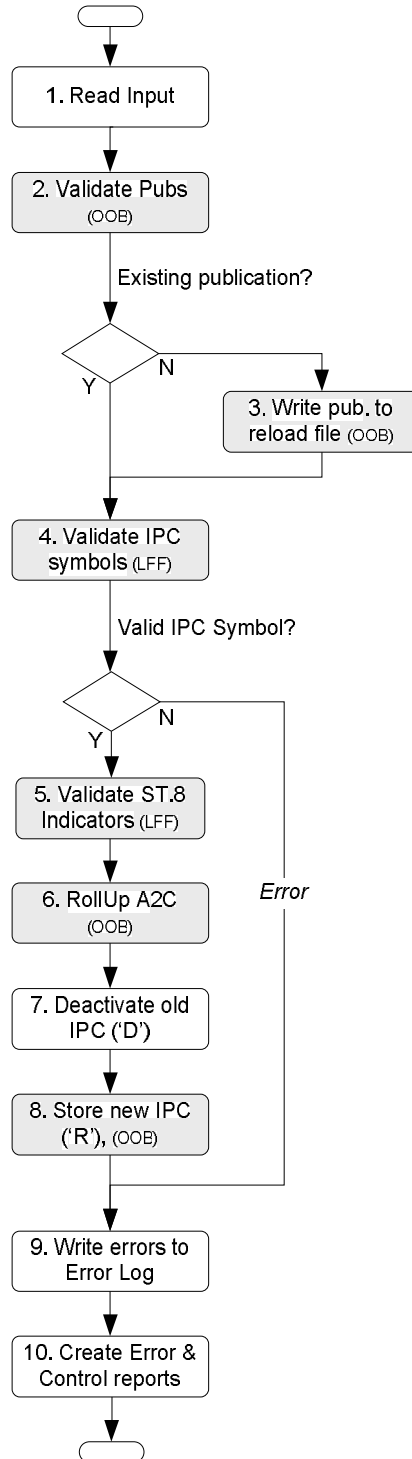
- <date-produced>: set to SYSTEM DATE
 - <dtd-version>: set to production version
 - <revision-to-date>: set to <ep-working-list revision-to-date>
- b. <ep-ipcr-document>: each occurrence of this tag represents a publication, where:
- <publication-reference>: holds the publicationID
 - <application-reference>: holds all applicationIDs within the family.
 - <application-type>: set to 'EP'
 - <classification-ipcr>: holds IPC symbol(s)
 - write all IPC as 50 bytes flat text to <classification-ipcr><text>
 - leave the fully tagged element <classification-ipcr> empty
- c. all other attributes not mentioned above can be left empty
- d. no extra formatting is needed: data can be written as extracted from DB2
- e. <classification-ipcr> sequence attribute
- f. all optional element id attributes.
6. MCD validates the XML file built against the DTD. If the validation fails, MCD issues an error, passing all error information generated by the DTD validation as Error Text in the error report.

5.8 CREATE ERROR AND CONTROL REPORTS

1. MCD writes all warnings/errors to the error report; see also Chapter 'Error Codes'
2. MCD updates the report counts for all process steps as indicated in the logical process flow:
 - a. Header Information - for all reports the same:
 - Report Title
 - Date and Time the procedure was run
 - Description line:
 - Report 1: Totals for converted ECLA/ICO symbols
 - Report 2: ECLA/ICO symbols not in Concordance table
 - Report 3: ECLA/ICO symbols without corresponding IPC, but '*' given
 - b. Report 1 contains total numbers of:
 - Families read from working list
 - Families with ECLA/ICO
 - ECLA Symbols read (matching criteria)
 - ICO symbols read (matching criteria)
 - IPC Advanced level symbols retrieved
 - IPC Advanced level symbols 'I' stored (in output file, to be stored)
 - IPC Advanced level symbols level 'N' stored (in output file, to be stored)
 - IPC Core level symbols level 'N' stored (in output file, to be stored)
 - Families with one, or more IPC symbols
 - c. Report 2 contains all ECLA/ICO symbols not in CONC
 - d. Report 3 contains all unique ECLA/ICO symbols without IPC, but '*' given.

6 STORE RECLASSIFIED PUBLICATIONS

Grey shaded (OOB) steps: reusable functionality from Other Office Backfiles



6.1 READ INPUT

1. MCD determines for which revision period the input was sent from input tag <Revision Period> (used during 'Validate IPC8 Indicators')
2. MCD only accepts standard input, as defined in [7]. Any Reclassified Publications sent in a different format will first be pre-processed by the Front-Office

6.2 VALIDATE PUBLICATIONS

as in [OOB], § of the same name

6.3 WRITE TO RELOAD FILE

as in [OOB], § of the same name

6.4 VALIDATE IPC

If Offices send symbols not being part of any reclassification project, a warning is be issued. This warning may serve as statistical information for EPO, e.g. to analyse the reclassification process.

1. For each input IPC symbol, MCD checks if it is present in the RCL. If not, issue warning W051.

Only 'R' symbols need validation. 'D' symbols need to be deactivated, but can further be left in MCD as is.

all grey as in [LFF]

1. For each input IPC 'R' symbol , MCD calls the IPC Service 'Validate IPC' with the following input:
 - a. IPC symbol: as provided
 - b. Validation Date: set to the highest <rcl to-version> found in the RCL
Remark: this date is not necessarily equal to the one in the selection criteria
 - c. Classification Level: as provided
2. Based upon the output from the service:
 - a. if a valid symbol: continue processing the symbol
 - b. if not a valid symbol (E018/E019): stop processing the symbol
 - c. if the IPC Service issued an error/warning, write the following to the Error Log:
 - E018 issued by service à E001 to the Error Log
 - E019 issued by service à E002 to the Error Log
 - W020 issued by service à W003 to the Error Log
 - W021 issued by service à W004 to the Error Log

6.5 VALIDATE ST.8 INDICATORS

All warnings go to the Error Log

1. For each input IPC 'R' symbol , MCD validates all ST.8 indicators in the input according to the following rules:
 - a. Version Indicator:
 - use value returned by 'Validate IPC'
 - if input differs from the value returned by the service, issue warning W005
 - if different from the value held by the <ep-working-list revision-to-date> (all reclassifications should be part of the same revision) and issue warning W042

- b. Classification Level: use value returned by the IPC Service (if service issued W021 issued a W004 to the Error Log)
- c. First or later position of symbol:
- if a non-inventive symbol (indexing codes, symbols allocated as 'N') is delivered as 'F', store it as 'L' and issue warning W048 (a non-invention symbol may never be stored as 'F')
 - per Classification Level, store no more than one IPC symbol with 'F' for the family (evaluate this rule at family level):
 - if 'F' already in MCD, set all provided 'F' to 'L'. Treat Subclass/Core/Advanced separately
 - if 'F' not already in MCD, but multiple 'F' provided, keep one 'F' and set the rest to 'L' - doesn't matter which 'F' is kept. Treat Subclass/Core/Advanced separately
 - Subclass may only be stored 'F' if no Core 'F' is present: if Core level 'F' already present for the same family (in same input, or already in MCD), set all provided Subclass level 'F' symbols to 'L'
 - issue warning W049 for each Symbol that was changed to 'L'
 - if none of the above: store as provided.

remarks:

- if no 'F' symbol is delivered with a publication, for a family with no 'F' symbols stored either, this is acceptable
 - if Core level 'F' is provided and Subclass level 'F' is already present at family level, it is stored as provided: so in this case both Subclass as Core level have 'F'
 - indexing symbols can only be non-invention, so they will always be stored as 'L'.
- d. Classification value:
- If not 'I', or 'N' issue warning W007 and set to 'N' if Indexing Code, else 'I'
 - If Indexing Codes were used for invention information, issue warning W008 and set to 'N'
 - If reclassification leaves a family with no value 'I', issue warning W044.
- remark: this can be the result of
- reclassification changing the family from having at least one value 'I' to none
 - no valid IPC symbol was provided for the publication that represents Invention Information
- e. Action date: if empty, or not an existing date, take the current date and issue warning W010
- f. Original / Reclassified data: if not 'R', or 'D', issue error E035 and write the IPC Symbol to the error log and stop processing the symbol
- g. Source of classification data: if not 'H', 'M', or 'G', set to 'H' and issue warning W013
- h. Generating office: if empty take CC of the PublicationID and issue warning W014
- i. For future use: possible content to be ignored

6.6 ROLLUP ADVANCED TO CORE

All as in [OOB] § of the same name. Errors need to go the error report, not the reject tables.

1. For each IPC Advanced Level symbol that is not indexing code, MCD calls the IPC Service 'Roll-Up Advanced to Core' with the following input:
 - a. IPC Advanced level symbol
 - b. Roll-Up date: same as Validation Date in call to 'Validate IPC'
2. If the service returned an error, MCD writes the error to the Error Report and does not roll-up the Advanced Level symbol
3. MCD uses same values for the ST.8 indicators as for the Advanced level IPC, with the exception of:
 - a. Version Indicator: taken from the 'Roll-Up Advanced to Core' service
 - b. Classification level: taken from the 'Roll-Up Advanced to Core' service

6.7 DEACTIVATE OLD IPC ('D')

NOs may decide to always send only one publication per family. MCD will make sure that all relevant symbols are deactivated for the whole family.

1. For each 'D' symbol sent, MCD deactivates all old IPC symbols within the family
 - a. set 'Action Date' to the one supplied by the reclassifying office
 - b. set 'Original or Reclassified' indicator to 'D'
 - c. CREATION DATE = date running 'Store Reclassified Publications'
 - d. CREATION_SOURCE = 'RECLAS01'
2. If 'D' symbols cannot be found in MCD (Symbol + Classification Level), MCD discards the symbol, issues warning W036 and writes them to the Error Log
3. For Core Level Revisions, MCD in addition deactivates all obsolete Core Level IPC symbols for which no reclassified 'D' symbols were sent, but that are present in RCL (as <concordance from-symbol> for <ep-working-list revision-to-date>)
4. MCD deactivates above IPC both at publication and family level
5. for each 'D' record sent, MCD deletes all errors for the same publication+symbol+level from the error log, whatever the generating process was that created them.

6.8 STORE NEW IPC('R')

all grey as in [OOB], no load-replace as in LFF

1. MCD stores all valid IPC 'R' symbols on the family level in TDO174.IPC, [3] for the Datadictionary with:
 - a. SEQUENCE (PK) incremented for each IPC added to the same family
 - b. CREATION DATE = date running 'Store Reclassified Publications'
 - c. CREATION_SOURCE = 'RECLAS01'
2. Core level symbols from Roll Up, are stored in addition to the Advanced level symbols
3. The formatting rules as given in the official ST.8 format [2] must be applied for storing the IPC symbols (pos. 1-15)

4. Store Reclassified Publications may add IPC symbols to families, or change indicators, but may never delete IPC symbols from families
5. Per family no duplicate 'R' symbols will be stored of Core Level symbols, Advanced Level symbols, or Subclass Level symbols: this is the case when Classification Symbol, Classification level, Version Indicator and 'Original or Reclassified data' indicator are the same ('D' and 'R' symbols are treated separately).

MCD solves the duplicates based on Classification value according to the following rules:

- a. If duplicate IPC symbols were delivered for a publication, issue error W015 and
 - if both 'I' and 'N' are delivered; discard the one(s) with 'N'
 - if a choice must be made from identical Classification values, store one, no matter which one.
- b. If the IPC symbol delivered already exists for the family
 - if populated by IPC-IPC conversion (CREATION_SOURCE = 'IPC-IPC'); replace the full symbol
 - else
 - when 'I' is delivered, but already present: discard the IPC symbol
 - when 'I' is delivered and 'N' is present: replace the complete IPC symbol
 - when 'N' is delivered: discard the symbol
6. Core level symbols supplied by Offices that also resulted from Roll-Up can be dropped (Classification Symbol, Classification level and Classification Value are the same): the Core Level coming from Roll-up takes precedence.

6.9 WRITE ERRORS

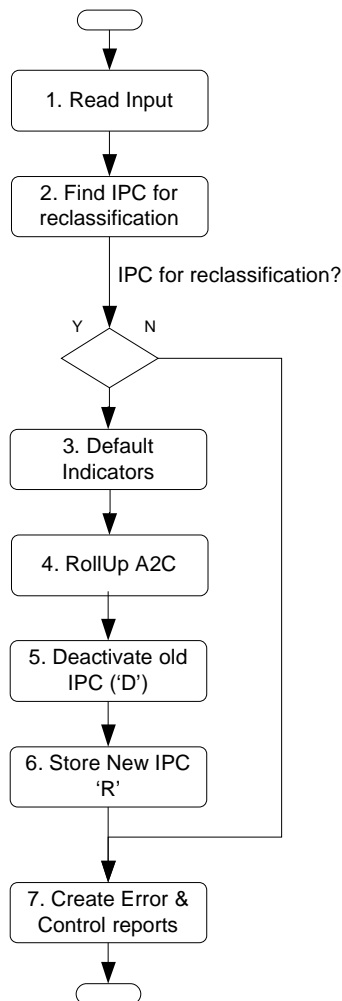
1. MCD writes all errors to the Error Log, *or* a standard Error Report according to the following rules:
 - a. functional errors -to be dealt with by offices- go to the Error Log
TDO183.IPC_ERR_LOG:
 - all errors / warnings issued by 'Store Reclassified Publications (see also Ch. Error Codes, last column)
 - b. technical errors - need EPO attention- go to a standard Error Report:
 - errors from Roll-Up: RE01 - RE02, RW01
 - All other technical errors that occurred
 - c. set the following values:
 - GEN_PROCESS to 'RECLAS01'
 - ASSIGNED_OFFICE to spaces

6.10 CREATE CONTROL REPORT

1. MCD updates the report counts for all process steps as indicated in the logical process flow
 - a. Header Information:
 - Name of Input file read

- Date and Time the procedure was run
- b. Total Number of:
 - Input tags read
 - IPC 'D' symbols read
 - IPC 'R' symbols read
 - Families Updated
 - IPC inventive 'D' symbols stored
 - IPC inventive 'R' symbols stored
 - IPC non-inventive 'D' symbols stored
 - IPC non-inventive 'R' symbols stored
 - IPC 'D' symbols invalid
 - IPC 'R' symbols invalid
 - Publication IDs written to the error log
 - Publication IDs written to reload file
 - IPC symbols written to reload file

7 PROCESS AUTOMATIC RECLASSIFICATIONS



7.1 READ INPUT

1. Selection criteria,
 - a. Concordance to-version (optional, only one value allowed): only concordances with the to-version equal to the one given in the selection criteria will be processed
 - b. If not provided, process all

7.2 FIND IPC FOR RECLASSIFICATION

1. MCD determines what IPC must be reclassified automatically: these are IPC symbols
 - a. that match with from-symbols of N:1 concordances in the RCL (qualifying the selection criterion)
 - a match means IPC Symbol & Classification level are equal and Version Indicator is smaller (older) , or equal to the concordance from-version (*so symbols part of older revisions are also included*)
 - an N:1 concordance is a <concordance-to-symbol> with more than one related <concordance-from-symbol>
 - b. and are not marked 'D' already (Original or Reclassified data)

2. From the N:1 concordances MCD uses
 - a. <concordance-from-symbol> elements to identify IPC that must be deactivated ('D' symbols)
 - b. <concordance-to-symbol> elements as the new reclassified IPC ('R' symbols)

7.3 VALIDATE IPC

Although the IPC 'R' symbols should be valid (from RCL) MCD validates them to retrieve the correct Version Indicator.

1. For each input IPC 'R' symbol, MCD calls the IPC Service 'Validate IPC' with the following input:
 - a. IPC symbol: from RCL, formatted as ST.8, pos. 1-19
 - b. Validation Date: set to the highest <rcl to-version> found in the RCL
Remark: this date is not necessarily equal to the one in the selection criteria
 - c. Classification Level: from old symbol
2. Based upon the output from the service:
 - a. if a valid symbol: continue processing the symbol
 - b. if not a valid symbol (E018/E019): stop processing the symbol
 - c. always write any error as issued by 'Validate IPC' to the error report, logging the original Publication/family ID and the complete IPC symbol as 'Error Text'

7.4 DEFAULT INDICATORS

1. For each IPC 'R' symbol found, MCD defaults all ST.8 indicators as follows:
 - a. Version Indicator: use value returned by 'Validate IPC'
 - b. Classification Level: same as old symbol
 - if the classification level appears incorrect (service warning W021), issue warning W004
 - c. first or later position of symbol: as old symbol
 - d. Classification value: as old symbol
 - e. *all others as EIC*

7.5 ROLLUP ADVANCED TO CORE

For most IPC symbols the Roll-Up is not necessary:

- *For Advanced Level only revisions the Core level remains unmodified, so the Roll-up should only generate a duplicate*
- *For both Core and Advanced Level revisions the Core levels could be taken directly from the Core Revision*

For special cases however, e.g. a reclassified family is also corrected, the above doesn't hold and the Roll-up is required.

all grey as in [OOB]

1. For each IPC Advanced Level 'R' symbol that is not indexing code, MCD calls the IPC Service 'Roll-Up Advanced to Core' with the following input:

- a. IPC Advanced level symbol
- b. Roll-Up date: same as concordance <rc1 to-version> (as in selection criteria)
2. If the service returned an error, MCD writes the error to the Error Report and does not roll-up the Advanced Level symbol
3. MCD applies the same rule for the ST.8 indicators as for the Advanced level IPC, with the exception of:
 - a. Version Indicator: taken from the 'Roll-Up Advanced to Core' service
 - b. Classification level: taken from the 'Roll-Up Advanced to Core' service

7.6 DEACTIVATE OLD IPC ('D')

1. MCD deactivates (set to 'D') all IPC Symbols that can automatically be reclassified (as found in step 'Find IPC for Reclassification'), both Core and Advanced, both at publication and family level in TDO174.IPC, by setting:
 - a. Action date: to date of running the procedure (YYYYMMDD)
 - b. Original or Reclassified data: to 'D'
 - c. CREATION DATE = date running 'Store Reclassified Publications'
 - d. CREATION_SOURCE = 'RECLAS02'

7.7 STORE NEW IPC ('R')

1. MCD stores all newly derived IPC 'R' Symbols (<concordance-to to-symbols>) that could automatically be reclassified, on the family level in TDO174.IPC, with:
 - a. SEQUENCE (PK) incremented for each IPC added to the same family
 - b. CREATION DATE = date running 'Process Automatic Reclassifications'
 - c. CREATION_SOURCE = 'RECLAS02'
2. MCD rejects all duplicate IPC symbols (identical Classification symbol, Version Indicator and Classification level), applying the following rules
 - a. when both Class Values 'I' and 'N' were derived, keep the 'I'
 - b. do not include the counts for the duplicates in the control report
3. Both Advanced level as Core level IPC must be stored
4. The formatting rules as given in the official ST.8 format [2] must be applied for storing the IPC symbols (pos. 1-15)
5. 'Process Automatic Reclassifications' may add IPC symbols to families, or change indicators, but may never delete IPC symbols from families
6. Per family no duplicates will be stored of Core Level symbols, Advanced Level symbols, or Subclass Level symbols. IPC allocations are duplicates when the Classification Symbol and Classification level are the same.

MCD solves the duplicates based on Classification value according to the following rules:

- a. If the IPC symbol derived already exists for the family
- b. if populated by IPC-IPC conversion (CREATION_SOURCE = 'IPC-IPC'); replace the full symbol

else

- c. when 'I' is derived, but already present: discard the IPC symbol
 - d. when 'I' is derived and 'N' is present: replace the complete IPC symbol
 - e. when 'N' is derived: discard the symbol
7. Core level symbols Office supplied, that also resulted from Roll-Up can be dropped (Classification Symbol, Classification level and Classification Value are the same): the Core Level coming from Roll-up takes precedence.

7.8 CREATE ERROR AND CONTROL REPORTS

1. MCD writes all warnings/errors to the error report; see also Chapter 'Error Codes'
2. MCD updates the report counts for all process steps as indicated in the logical process flow
 - a. Header Information - for all reports the same:
 - Report Title
 - Date and Time the procedure was run
 - b. Total numbers of:
 - Families Updated
 - IPC inventive 'D' symbols stored
 - IPC inventive 'R' symbols stored
 - IPC non-inventive 'D' symbols stored
 - IPC non-inventive 'R' symbols stored

8 CHECK RECLASSIFICATION RESULTS

8.1 READ INPUT - SELECTION CRITERIA

1. Selection criteria:
 - a. Concordance to-version (optional, only one value allowed): only concordances with the to-version equal to the one given in the selection criteria will be processed
 - b. If not provided, process all

8.2 CHECK FOR UNREVISED IPC

1. MCD checks for all families if they contain IPC symbols that should have been revised, but are not. This is the case if *all* of the following is true:
 - a. the allocated IPC exists in the RCL as a from-symbol
 - b. its 'Original or Reclassified data' indicator is not 'D'
 - c. its Version Indicator is smaller (older), or equal to the related concordance from-version
2. For all symbols found, MCD continues with §4.3 'Find reclassifying Office', with the following differences
 - a. set list-kind to 'M'
 - b. create the report
 - with title 'Check reclassification Results'
 - with an extra count: total number of families checked to the report

9 EXCHANGE RECLASSIFICATION RESULTS

This exchange has a similar purpose and identical file layout as the IPC-2006 Backfile exchange, it differs in the extraction rules only.

Technically, the extraction itself can be based on the approach taken for weekly batch exchanges.

This exchange is additional to the standard weekly exchanges. It allows offices that do not receive weekly exchanges to keep track of the specific changes due to the reclassification.

It is triggered only by changes in 'D' and 'R' symbols, the full class picture will still be exchanged though, similarly to the backfile.

9.1 READ INPUT - SELECTION CRITERIA

1. Selection criteria

- a. Concordance to-version (optional, only one value allowed): only concordances with the to-version equal to the one given in the selection criteria will be processed
- b. If not provided, process all.

9.2 EXTRACT IPC

1. MCD determines what must be exchanged:

- a. trigger an exchange: all IPC symbols that were changed since the last exchange and for which their CREATION-SOURCE = one of the reclassification processes
- b. extract for the exchange (from families triggered): all publications and their publication level IPC
 - both publication and family level IPC symbols must be exchanged: all family level IPC repeated for each publication within the family (offices have no, or a different family concept)
 - all associated application numbers
- c. exclude from exchange: all pre-published documents

2. MCD puts the extracted information on the reclassification results file

- a. using DTD EP IPCR Documents, populating the tags similarly to [9] 'Populate Backfile'
- b. cutting the file in 100MB sub-files is not necessary (none of the non-functional requirement of [9] 'Populate Backfile' applies here)

9.3 CREATE ERROR AND CONTROL REPORTS

1. MCD creates an output report as in [9] 'Populate Backfile', with title 'Exchange Reclassification Results'

10 STANDARD EXCHANGES

All IPC symbols with 'Original or Reclassified data' indicator = 'D' must be excluded from the standard exchanges.

Reason behind this is that the standard exchanges only contain active information -that can be loaded by recipients- and no deactivated history (such as 'D' symbols). Such 'D' symbols will be sent in the special reclassifications exchange.

Are these the exchanges:

- Epodoc exchange
- Esp@cenet (Level I) exchange
- FPDB/GlobalPat exchange
- IFD (Vienna) exchange
- Trilateral Statistics exchange
- DOCDB (ST30) exchange
- Watch Service exchange.

11 ERROR CODES

Error Codes start with an 'E' for errors, with a 'W' for warnings. See [10] 'Error codes' for error message descriptions.

12 FIND RECLASSIFYING OFFICE - RECLASSIFICATION

This service determines what Office(s) should reclassify the family given in the input (by PublicationID). It uses TDO117_COUNTRY to retrieve information about Offices, see also [10] 'Country table values '.

For reclassification, reclassifying offices must be assigned according to the following rules:

1. families with the first filing of a DIYO, are reclassified by this DIYO
2. families with no DIYO, but one, or more PCTMIN publications are reclassified by a TO
3. remaining families with documents of Advanced level Offices are reclassified by the country of the oldest priority / the country of the oldest Advanced level Office publication
4. all other families - with only documents of Core level Offices are reclassified by the country of the publications, if they contain IPC to revise

12.1 INPUT

- PublicationID X(19)

12.2 PROCESSING

1. families with the first filing of a DIYO, are reclassified by this DIYO:
 - a. The Country of first filing is the CC of the oldest Priority(s)
 - b. a DIYO Office has COUNTRY.OFFICE_TYPE = DIYO
 - c. If a DIYO exists for a first filing, put its CC in the output, else continue
2. families with no DIYO, but one, or more PCTMIN publications are reclassified by a TO:
 - a. identify the CC of the oldest active priority of the family
 - if two or more “oldest priorities” exist with different CCs, it does not matter which one is selected
 - WO priorities should not be selected if priorities from other countries exist for the family as well
 - if the family contains no active priority, select the oldest non-active priority. If two or more “exist with different CCs, it does not matter which one is selected
 - if no priority can be found at all, put the CCs of each Office in the output
 - b. find the 1st, 2nd and 3rd Reclassifying TOs for this CC (from COUNTRY.RECLASS_OFF_1, RECLASS_OFF_2 and RECLASS_OFF_3)
 - if no Reclassifying Office is found, issue error E029
 - c. check if a PCTMIN publication for the Reclassifying TO is in the family, in the order RECLASS_OFF_1, RECLASS_OFF_2, RECLASS_OFF_3
 - put the first Reclassifying TO for which a PCTMIN publication was found in the output
 - if this remains unresolved, continue
3. The remaining families with at least one document of an Advanced level Office are reclassified by an Advanced level Office:

- a. if the oldest priority is from an Advanced Level Office, and there is at least one publication present from this office, put its CC in the output country
 - b. else put the country of the oldest Advanced level Office publication
4. All other remaining families -that only contain documents of Core level Offices- are reclassified by each core level Office: put the CCs of each Core Level Office in the output

12.3 OUTPUT

- Publication ID X(19)
- Reclassifying Office(s) X(02)
- Office Type X(04)
- Error code (optional) X(04)
- Error Message (optional) X(80)
- Error Datetime (optional) X(26)

13 FILES AND TABLES

13.1 FILES

- All Processes
 - Input: Selection Criteria
 - Output: Control Reports
- Collect Publications for Reclassification
 - Output: Working List
- Reclassify Publications (EPO)
 - Input: Working List
 - Output: Reclassified Publications
- Store Reclassified Publications
 - Input: Reclassified Publications
 - Output: Publications to Reload
- Process Automatic Reclassifications
 - Output: Reclassified Publications
- Check Reclassification results: as Collect Publications for Reclassification
- Exchange Reclassification results
 - Output: Reclassification results

with:

- Working List: IPC_CC_NNNN_WORKINGLIST_DDMMYY_HHMM, see [6] for file description
- Reclassified Publications: IPCR_CC_NNNN_DDMMYY_HHMM, see [7] for file description
- Reclassification results file: IPCR_RESULTS_CC_NNNN_DDMMYY_HHMM.Z, see [7] for file description

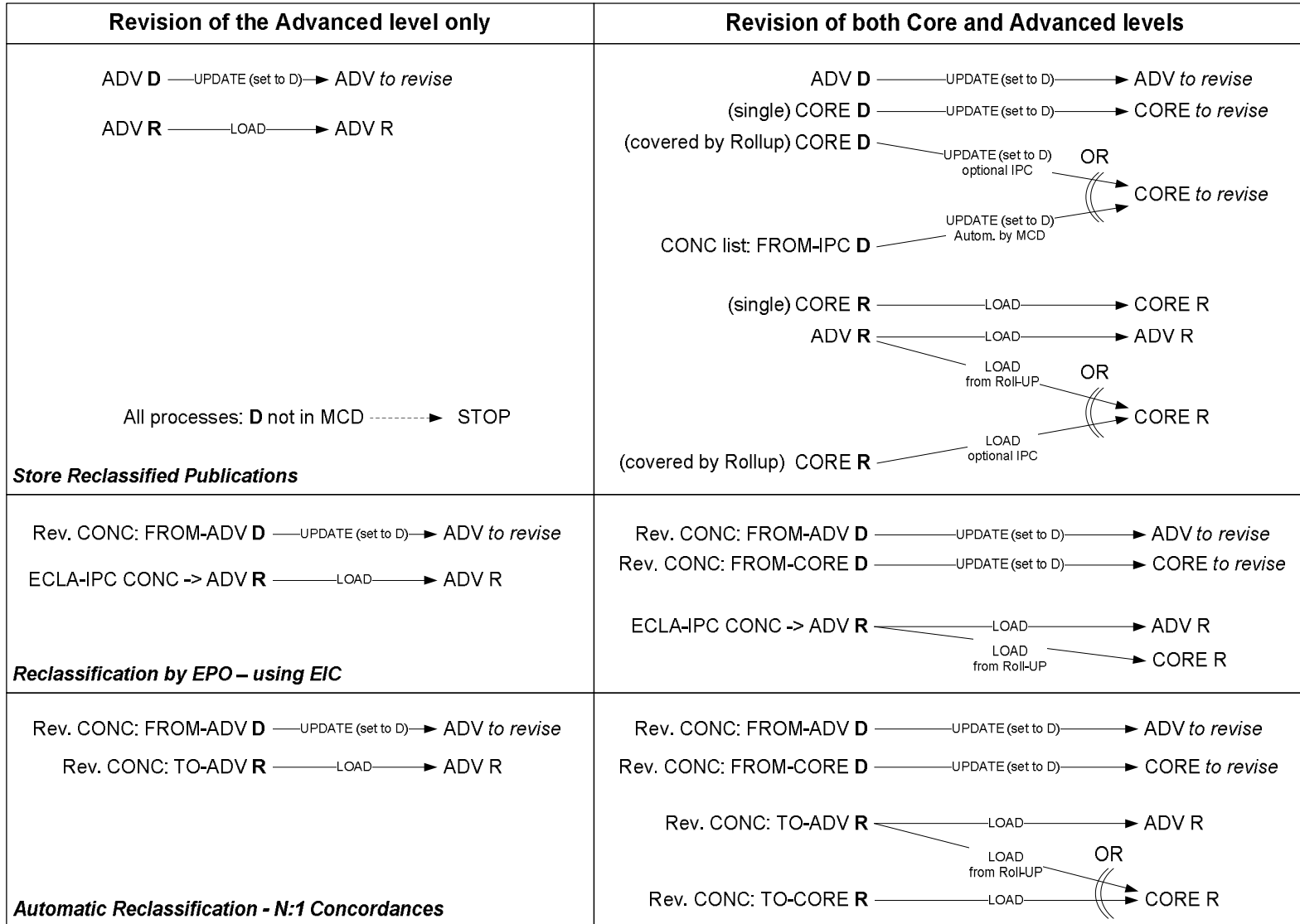
13.2 NEW DB2 TABLES

- Country table

See [2] for the Data Dictionary

Appendix A - How reclassified symbols are sent & stored

The graph below shows how symbols can be sent / processed and will be stored in MCD



Appendix B - How reclassification changes families

This example shows how families change due to reclassification in general, detailed examples follow next.

A1 Ò A'1

A2 Ò A'2

A3 Ò A'3

R: new 'R' IPC

D: old 'D' IPC

Result of reclassifying a family. The content after load does not change when the new scheme enters into force.

	Family IPC	Publication IPC
before :	<u>A1</u> , <u>A2</u> , A4	<u>A1</u> , <u>A3</u> , A5
after(load):	A1 ^D , A'1 ^R , A2 ^D , A'2 ^R , A'3 ^R , A4	A1 ^D , A3 ^D , A5

Appendix C - Detailed examples

The examples below use scheme and revision data as given below. A reference to a specific § is made when illustrating specific functionality.

Revision scenario

Advanced and Core level revisions coincide at 20090101.

A23G 3/30 transferred to A23G 4/00 (single deleted entry to a new entry)

A23G 9/02 transferred to A23G 9/32-A23G 9/52 (single deleted entry to a multiple new entries)

A43G 99/00 transferred to A43G 98/00 (single deleted entry to a new entry)

EIC concordances

The table below shows the revision concordances and ECLA-IPC concordances together (assumes both revisions were synchronised). The revisions in *italics* are fictitious. 'Symbol level' denotes the level as in the Validity File.

IPC from	IPC to // ECLA concordance	ECLA	symb. level	revision on
A23G0003/30	A23G0004/00	A23G0003/30	C	20090101
A23G0009/00	A23G0009/00	A23G0009/02M	C	20090101
A23G0009/02	A23G0009/32	A23G0009/02	C	20090101
Adv. revision: †	A23G0009/32	dpma	C	20090101
Adv. revision: ...			A	20090101
Adv. revision:	A23G0009/50	dpma	A	20090101
Adv. revision:	A23G0009/52	xxx	C	20090101
A43D0099/00	A43G0098/00	A43G0099/00	C	20090101
A43D0100/00	A43D0100/34	A43D0100/00	C	20081001
A43D0100/02	A43D0100/36	A43D0100/00	A	20081001
A43D0100/04	A43D0100/38	A43D0100/00	A	20081001

Example 1 - Reclassify Publications (EPO)

This example describes how EPO reclassifications result in revised IPC for one family, including storage of the Reclassified Publications file. Input for this process would be a working list, identifying the family below.

Selection criterion: Revision date = 20090101. In this example Core and Advanced level revisions coincide. For Advanced-only revisions, all Core IPC would remain unchanged (no 'D' and 'R').

ECLA

A23G 3/30 standard course, revised ◊ A23G0004/00, inventive - 5.4.1.a
 K23G 3/30 idem, non-inventive: duplicate in this scenario - 5.6.4
 A23G0003/30P4 not revised at all - 5.4.1.b
 A43D 99/00 revised ◊ A43G 98/00, see note below - 5.4.1.a
 A43D0100/00 other revision - 5.4.1
 G02B5000/14B no EIC concordance - 5.3.2.c

IPC allocations in MCD - before			IPC allocations in MCD - after			Remark
<i>IPC Family level</i>						
A43D 100/00	20080101C	I20071126RMEP	A43D 100/00	20080101C	I20071126RMEP	other revision, unmodified - 5.6.1.b
A43D 99/00	20060101A	I20051126RMEP	A43D 99/00	20060101A	I20081216DMEP	deactivation from load file - 5.6.1.a
A43D 99/00	20060101C	I20051126RMEP	A43D 99/00	20060101C	I20081228DMEP	deactivation by MCD - 5.6.1.a
			A43D 98/00	20090101A	I20081216RMEP	from load file
			A43D 98/00	20090101C	I20081228RMEP	from roll-up
			A23G 4/00	20090101A	I20081216RMEP	from load file, note no 'D' was created
			A23G 4/00	20090101C	I20081228RMEP	from roll-up
<i>IPC Publication level</i>						
A23G 9/00	20060101C	I20060722BHIE	A23G 9/00	20060101C	I20060722BHIE	non revised IPC, unmodified - 5.6.1.a
A43D 99/00	20060101C	N20060322RMEP	A43D 99/00	20060101C	N20081228D EP	deactivation by MCD - 5.6.1.a

Please note:

- Even If 'A43D 99/00' had not been present as ECLA, IPC 'A43D 99/00RMEP' would still have been deactivated
- Please note the differences in action Date between Advanced (when load-file was created) and Core levels (during Roll-Up)

Example 2 - Store Reclassified Publications

This example shows a how a file with reclassified publications is sent by some office (GB for example) and stored in MCD. For illustration the file contains many unexpected records as well. Selection criterion: Revision date = 20090101

IPC received from Office

A23G 30/00 20060101A I20081126DHGB standard course, deactivated IPC
 A23G 4/00 20090101A I20081126RHGB standard course
 A23G 4/00 20090101C I20081126RHIE revised IPC, Core -unlikely sent
 A23G 9/51 20090101C I20081126RHGB revised, non valid Ò reject
 A23G 9/02 20060101C I20081126DHGB deactivated, while 'R' rejected
 A43G 100/00 20060701A I20081126DHGB deactivated IPC
 A43G 100/34 20081001A I20081126RHGB other revision Ò warning - 6.5.1.a
 A43G 100/38 20081001A I20081126RHGB other revision Ò warning
 A43G 100/04 20060701A I20081126DHGB deactivated IPC, while not in MCD
 A23G 9/00 20060101A I20060417RHGB non revised IPC, sent as 'R' Ò warning - 6.5.1.a
 A23G 3/34 20060101A I20060417BHGB non revised IPC, sent as 'B' Ò reject - 6.5.1.f

IPC allocations in MCD - before

A23G 30/00 20060101A I20051123RMEP
 A23G 30/00 20060101C I20051123RMEP

 A23G 9/02 20060101C I20070911BHEP
 A43D 100/00 20060701A I20070911BHEP
 A43D 100/00 20060701C I20070911BHEP

 A43D 99/00 20060101A I20051123RMEP
 A43D 99/00 20060101C I20051123RMEP

IPC allocations in MCD - after

A23G 30/00 20060101A I20081126DMEP
 A23G 30/00 20060101C I20081126DMEP
 A23G 4/00 20090101A I20081126RHGB
 A23G 4/00 20090101C I20081126RHIE
 A23G 9/02 20060101C I20081126DHEP
 A43D 100/00 20060701A I20081126DHEP
 A43D 100/00 20060701C I20051203DHEP
 A43D 100/34 20081001A I20081126RHGB
 A43D 100/34 20090101C I20081203RHGB
 A43D 100/38 20081001A I20060215RHGB
 A43D 99/00 20060101A I20051123RMEP
 A43D 99/00 20060101C I20051123RMEP
 A23G 9/00 20060101A I20060417RHGB

Remark

set to 'D': rule applied by MCD

 sent explicitly, Roll-Up discarded
 set to 'D', while corresponding 'R' invalid

 rule applied by MCD
 loaded + W042
 Roll-Up
 loaded + W042, no corresponding 'D' present
 remains, unmodified
 remains, unmodified
 loaded as delivered + W042

Example 3 - Process Automatic Reclassifications

This example shows a how N:1 concordances are processed automatically in MCD.

Selection criterion: Revision date = 20090101

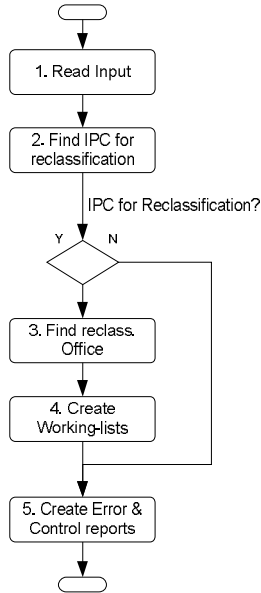
IPC allocations in MCD - before		IPC allocations in MCD - after		remark
<i>family level</i>				
A23G0003/00	20060101A I20051123RMEP	A23G 3/00	20060101A I20051123RMEP	no revision
A23G0003/00	20060101C I20051123RMEP	A23G 3/00	20060101C I20051123RMEP	no revision
A23G 3/30	20060101A I20051123RMEP	A23G 3/30	20060101A I20090122DMEP	
		A23G 4/00	20090101A I20090122RMEP	
A23G 3/30	20060101C I20051123RMEP	A23G 3/30	20060101C I20090122DMEP	
		A23G 4/00	20090101C I20090122RMEP	
A23G 9/02	20060101A I20051123RMEP	A23G 9/02	20060101A I20051123RMEP	not selected : 1:M concordances. 'sent later by reclassifying office
A23G 9/02	20060101C I20051123RMEP	A23G 9/02	20060101C I20090122DMEP	
		A23G 9/32	20090101C I20090122RMEP	
<i>publication level</i>				
A23G 3/30	20060101C I20060318BHIE	A23G 3/30	20060101C I20090122DHIE	
A23G 9/02	20060101C I20060501BHIE	A23G 9/02	20060101C I20090122DHIE	

Please note:

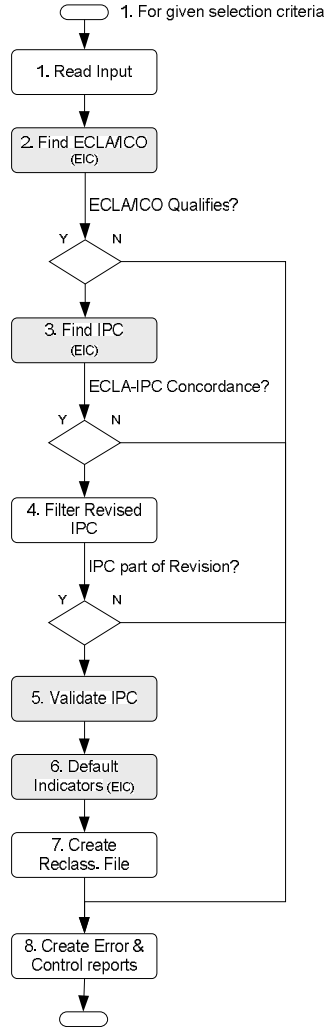
- The Advanced level A23G 9/02 is not selected for reclassification at all, this is a 1:M concordance. 'A23G 9/32 20090101A I20090122RMEP' and 'A23G 9/02 20060101A I20090122DMEP' will be expected from office that received the working list. This rule was chosen to keep processing consistent with processing reclassification data from other offices.

Appendix D - Logical Flows

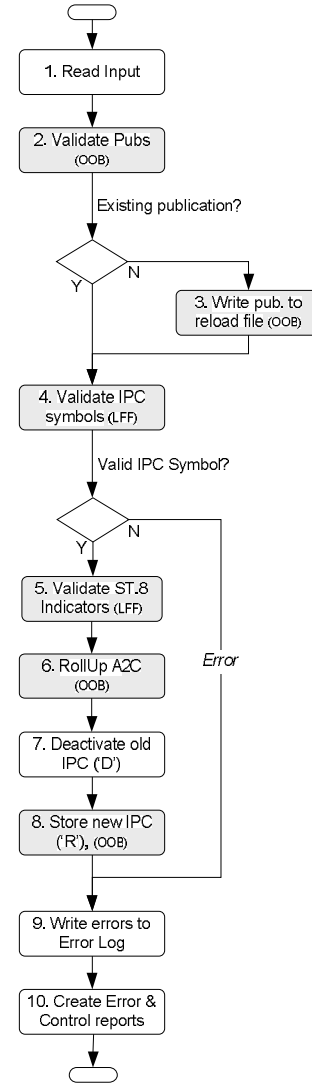
Collect Pubs for Reclassification



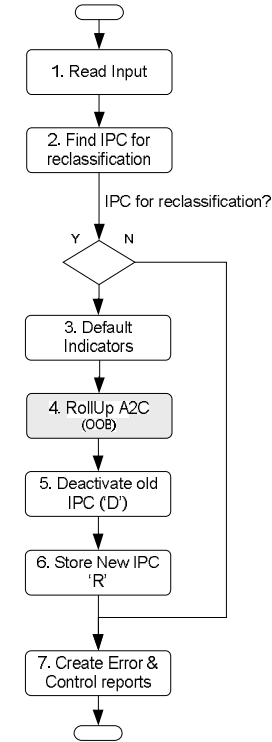
Reclassify Pubs (EPO)



Store Reclassified Pubs



Process Automatic Reclassifications



Appendix E - Selection Criteria overview

<i>Process name</i>	<i>criteria</i>	<i>purpose</i>
Check IPC Revision Concordances	<ul style="list-style-type: none"> - Concordance to-version <ul style="list-style-type: none"> o optional o only one value allowed 	<ul style="list-style-type: none"> - keep process clear, minimise risk confusion <p><i>used in logic:</i></p> <ul style="list-style-type: none"> - only check concordances for Concordance to-version
Collect Publications for Reclassification	<ul style="list-style-type: none"> - Concordance to-version <ul style="list-style-type: none"> o optional o only one value allowed <p><i>exclude</i></p> <ul style="list-style-type: none"> - IPC marked 'D' (Original or Reclassified data) - pre-published publications - Core with Advanced also part of same revision project within family (publication and/or family level) <p><i>remarks</i></p> <ul style="list-style-type: none"> - note that to-version is the identifier of new version-date (as opposed to from-version) 	<ul style="list-style-type: none"> - keep process clear, minimise risk confusion <p><i>used in logic:</i></p> <ul style="list-style-type: none"> - only process concordances for Concordance to-version - populate <ep-working-list revision-to-date> workinglist

Process name	criteria	purpose
Reclassify Publications (EPO)	<ul style="list-style-type: none"> - ECLA in a specific range <ul style="list-style-type: none"> o optional o many values allowed - ECLA allocated to family after date <ul style="list-style-type: none"> o optional o many values allowed - Concordance to-version (<i>from workinglist, header tag</i>) <ul style="list-style-type: none"> o always provided o only one value provided <p><i>exclude</i></p> <ul style="list-style-type: none"> - families without publications - NYA & proposed ECLA reclassified families <p><i>remarks</i></p> <ul style="list-style-type: none"> - it must be possible to enter any logical combinations of selection criteria (as in [EIC]) - no to-version is needed: determined in input file 	<ul style="list-style-type: none"> - enable re-runs of the same process. This may be necessary when new ECLA's come in - if EIC conc list is not ready yet, these criteria are handy: e.g. incomplete ECLA ranges can be excluded <p><i>used in logic:</i></p> <ul style="list-style-type: none"> - find ECLA/ICO according to selection criteria - filter IPC found on Concordance to-version - validate IPC for Concordance to-version - deactivate 'D' for Concordance to-version - populate <ep-ipcr-documents revision-to-date> output file
Store Reclassified Publications	<ul style="list-style-type: none"> - Concordance to-version (<i>from input file, header tag</i>) <ul style="list-style-type: none"> o always provided o only one value provided <p><i>remarks</i></p> <ul style="list-style-type: none"> - the Concordance to-version is not used for validating IPC 	<ul style="list-style-type: none"> - keep the process clear, minimise risk on problems due to several revisions in one file (risk = what happens if symbol a ->b -> c in subsequent revisions, that are sent all together in one file) <p><i>used in logic:</i></p> <ul style="list-style-type: none"> - validate Version Indicator = Concordance to-version - deactivate obsolete Core (for which no 'D' sent) for Concordance to-version
Process Automatic Reclassifications	<ul style="list-style-type: none"> - Concordance to-version <ul style="list-style-type: none"> o optional o only one value allowed 	<ul style="list-style-type: none"> - keep the process clear, minimise risk on problems due to several revisions ion one file <p><i>used in logic:</i></p> <ul style="list-style-type: none"> - only process concordances for Concordance to-version - deactivate 'D' for Concordance to-version

Process name	criteria	purpose
Check Reclassification Results	<ul style="list-style-type: none">- Concordance to-version<ul style="list-style-type: none">o optionalo only one value allowed	<ul style="list-style-type: none">- keep process clear, minimise risk confusion <p><i>used in logic:</i></p> <ul style="list-style-type: none">- check symbols for Concordance to-version
Exchange Reclassification Results	<ul style="list-style-type: none">- Concordance to-version<ul style="list-style-type: none">o optionalo only one value allowed <p><i>exclude</i></p> <ul style="list-style-type: none">- all pre-published documents	<ul style="list-style-type: none">- handy when redeliveries of previous exchanges are requested <p><i>used in logic:</i></p> <ul style="list-style-type: none">- exchange symbols for Concordance to-version