

IPC Reclassification Website

Address: <http://ipc.prohosts.org>

Authors: Daniel Barros Júnior and Antonio Carlos Souza de Abrantes

Date: 20 may 2009

User Manual

Index:

IPC Reclassification Website	1
1 - Entering the Reclassification Data:	3
2 – Search a document	13
3 – Listings all documents	14
4 – Monitoring reclassification work per country	15
5 – Monitoring reclassification work per version	17
Contact:	18

IPC Reclassification Website

The main purpose of the system is to be a tool to generate the XML file with the results of reclassification data at each new IPC version, in such way that all XML transformations be invisible to the user.

Every new version IPC WIPO/EPO produce working lists in a XML format with the lists of document number to be reclassified to each patent Office. Many countries, with a low number of documents to be reclassified, have difficulties to generate the results because of problems with his own IT support to create the proper XML files according to WIPO format. For these countries would be useful the availability of a tool permitting the user enter the data and generate the XML output file automatically in a user friendly way.

The system described below is available at <http://www.ipc.prohosts.org/> and basically has the following features:

- The system automatically reads each new working list from WIPO website, so the user can obtain a list of documents to be reclassified and its symbols
- All symbols that need to be reclassified are hiperlinked
- The user can enter data for each classification symbol for each patent document to be reclassified
- The system verifies if data is correct:
 - if the symbol entered is a valid symbol to that IPC version
 - avoids the use of the same symbol two times for the same document
- The system alert the user in case of:
 - there are more than one F(First) attribute

- if there is no Inventive attribute
 - if a F attribute is Non Inventive
 - if a F attribute is assigned to indexing code or A61P / A61Q subclasses
 - if an indexing code or A61P / A61Q subclasses is the only symbol
- The user can generate a XML result file just pressing one button at every time he wants, so the user can send his results in two or more files
 - For those symbols that there is no impact in that version, but that are listed in working list because there is some impacted classification at family level, the system will automatically delete such symbols, so the user need not to reclassify such docs.
 - The system exhibit graphics showing the quantity of docs that needs to be reclassified taking into the consideration the working list and the result files, so the user can see at every moment the quantity of docs missing to be reclassified.
 - Is it possible to run the system locally, without internet. For this it is necessary to install Apache+PHP+MySQL in his machine and all files delivered in ipc.zip to proper directory (htdocs).

1 - Entering the Reclassification Data:

IPC Reclassification Website

This website was developed to help countries to reclassify documents to a new version of IPC. The system generate the XML file with the results of reclassification made by the offices. To have a basic information how to use this site [click here](#). The system reads the working list generated by WIPO and permits the user to edit the symbols to be reclassified. At the end the system produces the result in XML format that must be sent to WIPO, according correct formats, so it's not necessary for the user any knowledge about XML formats. If you have some suggestion or detected some error please contact me abrantes@inpi.gov.br. In Brazil we are using it to produce our result file at each reclassification procedure. The system was developed in PHP and MySQL. To obtain a zip file with all source files of this system please [click here](#). This site is hosted in a free webserver, so we do not have any connection to the publicity banner at the bottom of this page.

This is not an official site of INPI-Brazil, it is hosted in a free web server. We do not assume any responsibility for errors or misuse of this software.

Thank you,

programmed by Antonio Abrantes and Daniel Barros Jr.,
patent examiners at INPI/DIRPA/Brazil
Rio de Janeiro, May, 2009 (Revision: 2009/05/04).

Enter the reclassification data:

Version:
200901 Residual 2

AR - Argentina

Open Working List

Monitoring the reclassification work per country:

Country:
AR - Argentina

Show graphics

Monitoring the reclassification work per version:

Version:
200901

Figure 1 - Main Screen of IPc Reclassification Data

Select the version (20090101, 20080101, 20071001 or 20070101). Each time that you change this version combo box, the system will automatically update list of Countries, at another combo box, with documents to be reclassified at that version (Figure 1). Note that sometimes WIPO/EPO have delivered a new sets of Working Lists, that they called “*Residual Working Lists*”. These lists have the docs missing to be reclassified system and maybe some additional documents. The system will always present the last working list available so the user do not need to worry about previous working lists.

Select the country and press “*Open Working List*” button.

The system will read the corresponding Working Lists previously downloaded from WIPO website (<http://www.wipo.int/ipcreclassification/>). The system will read the information from corresponding working list and creates a database MySQL where will be saved all data read from working lists and all the data inserted by user. So,

every time that user enter into the system the previous data are preserved, so he can do his job gradually. Finally when the user decides to generate the result file, the system reads this database to create XML result file.

The system also will load the corresponding table of valid symbols to the version selected and the concordance list (http://www.wipo.int/classifications/ipc/en/download_area/20090101/xml/) with the list of all symbols that has some change at new version and needs to be reclassified. So, the system knows which symbols were impacted at that version and that are exhibited hiperlinked.

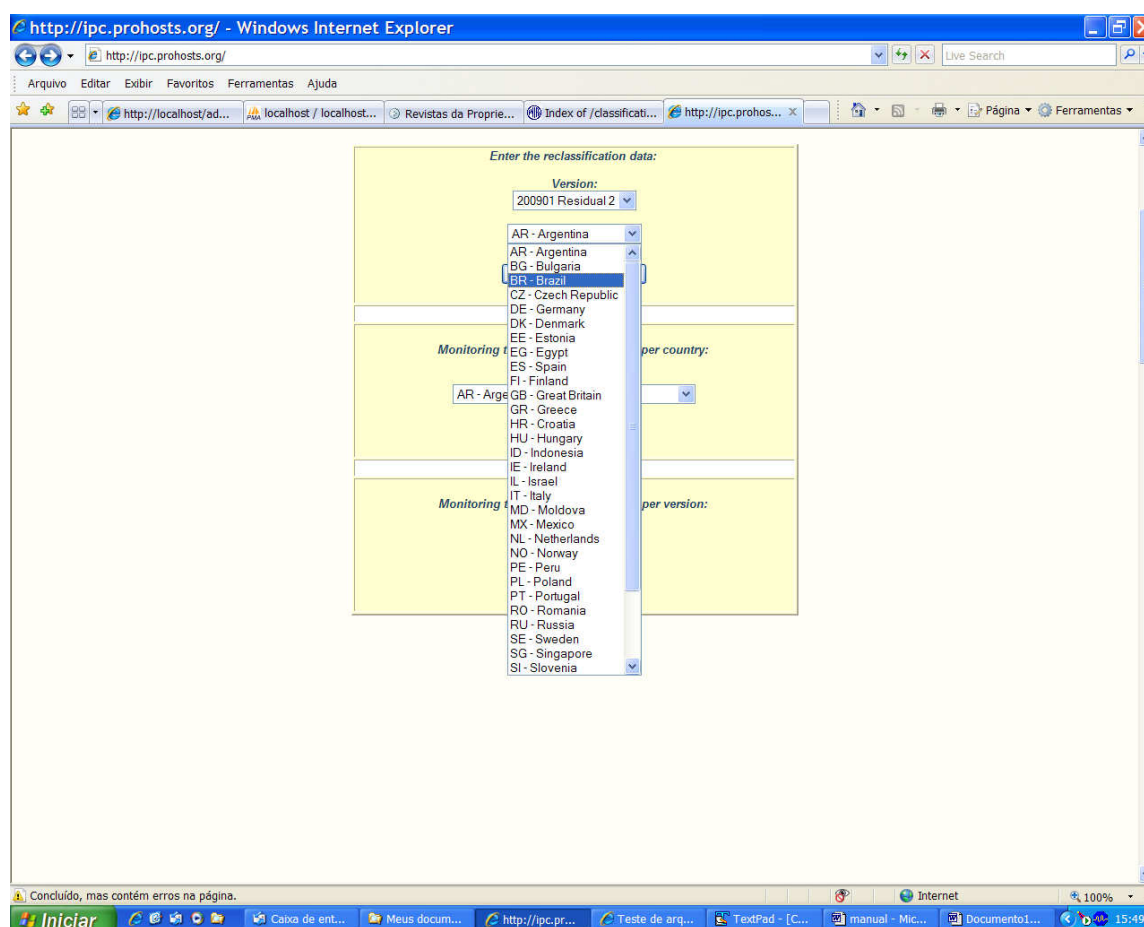


Figure 2 - Select version and country to enter data

In the example above we selected version 2009.01 and BR as country (Figure 2).

http://ipc.prohosts.org/readdata.php?countryselected=BR&versionselected=200901_r2&page=0&docfil - Windows Internet Expl...

Arquivo Editar Exibir Favoritos Ferramentas Ajuda

http://localhost/ad... localhost/ localhost... Revistas da Proprie... Index of /classificati... http://ipc.prohos... x

BR - Brazil - [ipc200901_r2]

Enter the number of application to filter: Filter

Documents that must be reclassified in 200901_r2 version.
[Click here](#) to return to initial page.
[Click here](#) to list all publication numbers.

Pages:
1 2
Next >>

Applications: [Total in WL: 51] [Total to reclassify:25] [Without reclassification: 25]

Pub.Number	Date	Classification	Version	L	F/L	Inv	Action	Sta	Src	Of	Message	Class
AU2004275843B2	2008-04-10	A01N65/00	20060101	A	F	I	2006-04-20	D	H	US		A01N
BR0003314A	2002-01-02	A01N65/00	20060101	A		I	2005-10-08	R	M	EP		A01N
BR0201033A	2003-11-04	A01N65/00	20060101	A		I	2005-11-10	R	M	EP		A01N
BR1100252A	2000-08-01	A01N65/00	20060101	A		I	2005-11-10	R	M	EP		A01N
BR6242841D0	1973-05-24	A01N65/00	20060101	A		I	2005-10-08	R	M	EP		A01N
BR6463965D0	1973-09-06	A01N65/00	20060101	A		I	2005-10-08	R	M	EP		A01N
BR7200290D0	1973-09-20	C07G17/00	20060101	A		I	2005-11-10	R	M	EP		A01N
	1973-09-20	A01N65/00	20060101	A	N		2006-05-06	R	M	EP		A01N
BR7403960D0	1974-11-26	A01N65/00	20060101	A	L	I	2005-12-20	R	M	JP		A01N
BR7708374A	1978-08-15	A01N65/00	20060101	A		I	2005-10-08	R	M	EP		A01N
BR7902848U	2001-07-17	H04Q7/32	20060101	A		I	2005-11-10	R	M	EP		H04W
BR7904243A	1981-01-05	A01N65/00	20060101	A		I	2005-11-10	R	M	EP		A01N
BR9705278A	1999-05-25	A01N65/00	20060101	A		I	2007-07-21	R	M	EP		A01N
BR9907057A	2000-10-17	A01N65/00	20060101	A	L	I	2006-03-10	R	M	JP		A01N
BRMU8400074U	2005-09-06	H04Q7/32	20060101	A		I	2005-11-10	R	M	EP		H04W
BRMU8400595U	2005-11-29	H04Q7/32	20060101	A		I	2006-05-06	R	M	EP		H04W
BRMU8400868U	2005-11-16	H04Q7/32	20060101	A		I	2006-05-06	R	M	EP		H04W
BRMU8400870U	2005-11-16	H04Q7/32	20060101	A		I	2006-05-06	R	M	EP		H04W
BRMU8401034U	2005-11-29	H04Q7/32	20060101	A		I	2006-05-06	R	M	EP		H04W
BRPI0400150A	2005-09-13	H04Q7/36	20060101	A		I	2005-11-10	R	M	EP		H04W

Concluído, mas contém erros na página.

Internet 100%

15:54

Figure 3 - Working List from BR IPC 2009.01

At this example there are 51 documents to be reclassified. The system is able to manage working lists with a large number of documents, because it splits the several documents 50 per page. In example of Figure 3 there are 51 documents, so the system divided the documents in two pages that you can access at the top of table.

From this total there are 25 documents that have a BR document with at least one symbol impacted. The remaining 26 documents have symbols impacted at family member but not at a BR document. For example, the first one: AU2004275843B2 has an impacted symbol at A01N65/00 at Australian document, but at BR there is no symbol impacted. The system in this case will automatically create a D attribute for this A01N65/00 at AU2004275843B2, so the user does not need to enter any new reclassification for this document.

Each document shows the corresponding symbols to be reclassified. In this Figure 3 the document BR0003314A has the symbol A01N65/00 to be reclassified.

Observe that the system permits the edition only of symbols that needs to be reclassified. If you detected a error in another symbol (not hyperlinked) the system will not permit you to correct this error. You should send this correction by another file. To edit each of symbols press the hyperlink for each symbol.

BR - Brazil - [ipc200901_r2]

Enter the new classification symbol for 200901 version for this selected document.
[Click here](#) to return to initial page.

Pub.Number	Date	Symbol	Version	Level	F/L	Inventive	Action Date	Status	Source	Office
BR0003314A	2002-01-02	<input type="text" value="A01N65/00"/>	20060101	A	<input type="text" value="D"/>	<input type="text" value="I"/>	2005-10-08	R	M	EP

Concluído, mas contém erros na página.

Figure 4 - Editing classification data

At this screen (Figure 4) you enter the new symbol (Figure 5) that you must type in Symbol input. You can select this symbol as First, Last symbol, and as Inventive or Non Inventive information. To create the new entry just press “*Create Symbol*” button. When you press “*Create Symbol*” button the system automatically puts D attribute to the old symbol (A01N65/00) and a R attribute to the new one (A01N65/10).

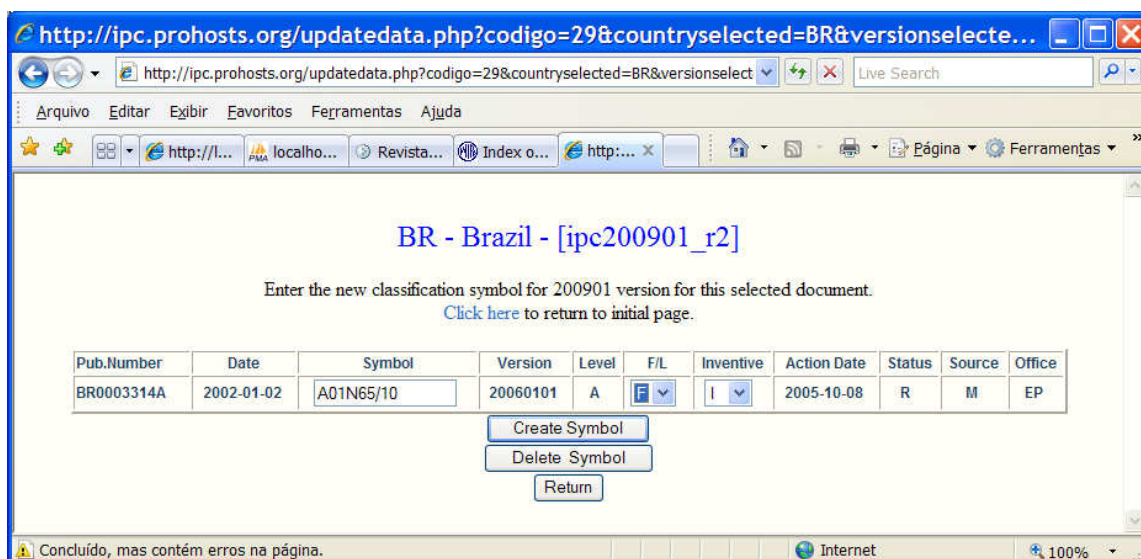


Figure 5 - Editing reclassification data

The system will test the new symbol, and in the case that this is a valid symbol will present the next screen (Figure 6) with the new value:

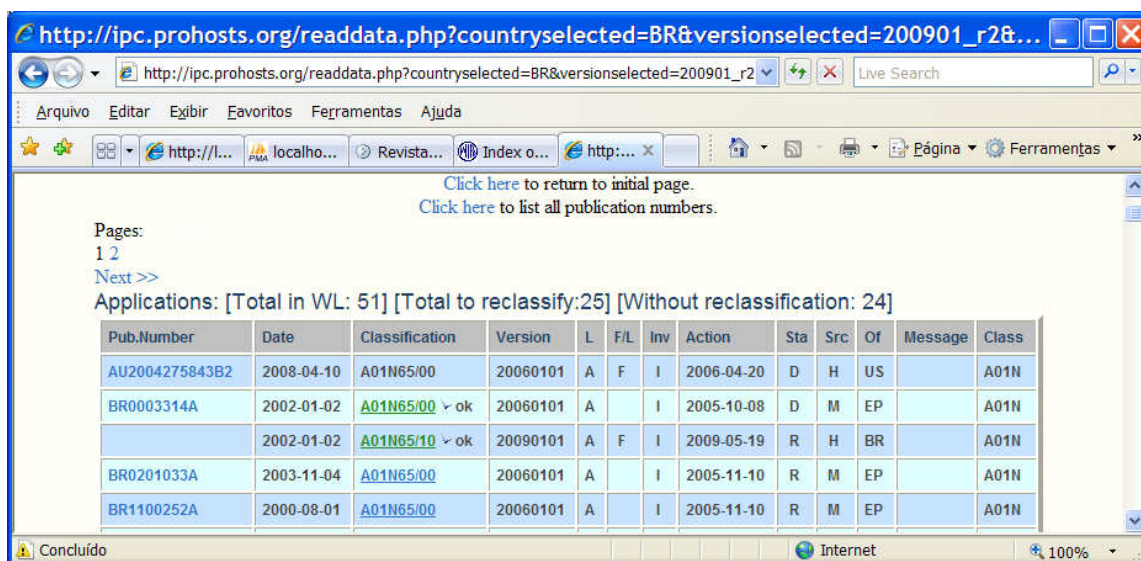


Figure 6 - Reclassification data with the new value inserted

Observe that the old symbol and the new one are presented with an "ok" status, indicating a valid operation. The system accepts only valid symbols for each IPC version.

To introduce new symbols for the same document, just click in hyperlink of original symbol A01N65/00 (D attribute), so you can insert as many symbols as you want. Let's insert A01N65/01 (Figure 7).

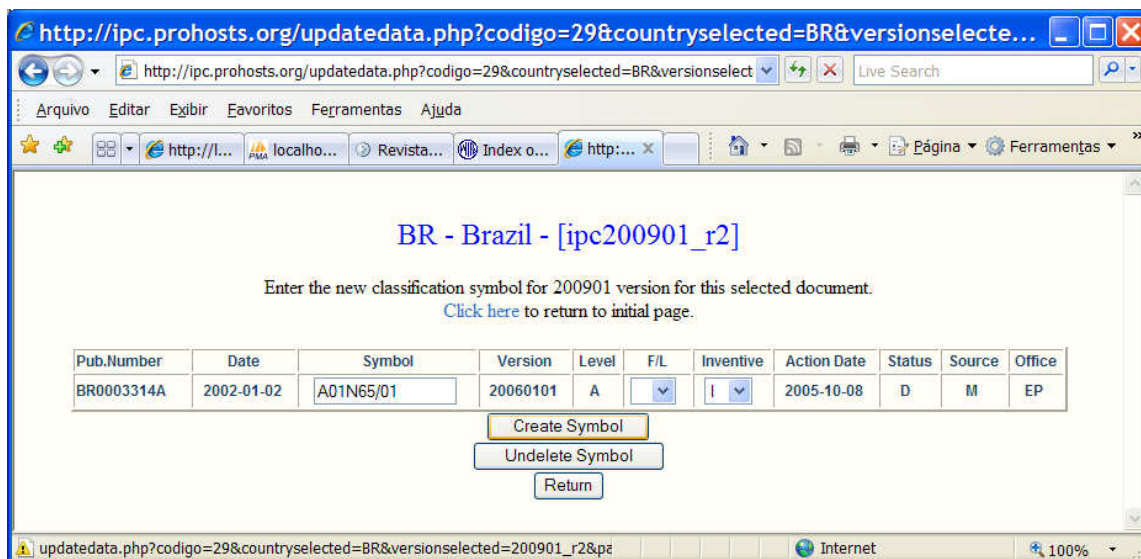


Figure 7 - Inserting a new symbol

The system will not recognize this symbol and exhibit an error message (Figure 8).



Figure 8 - Inserting a new symbol, in this case the system detects an error

To correct this error the user has to enter a valid symbol, for example A01N65/24 (Figure 9).

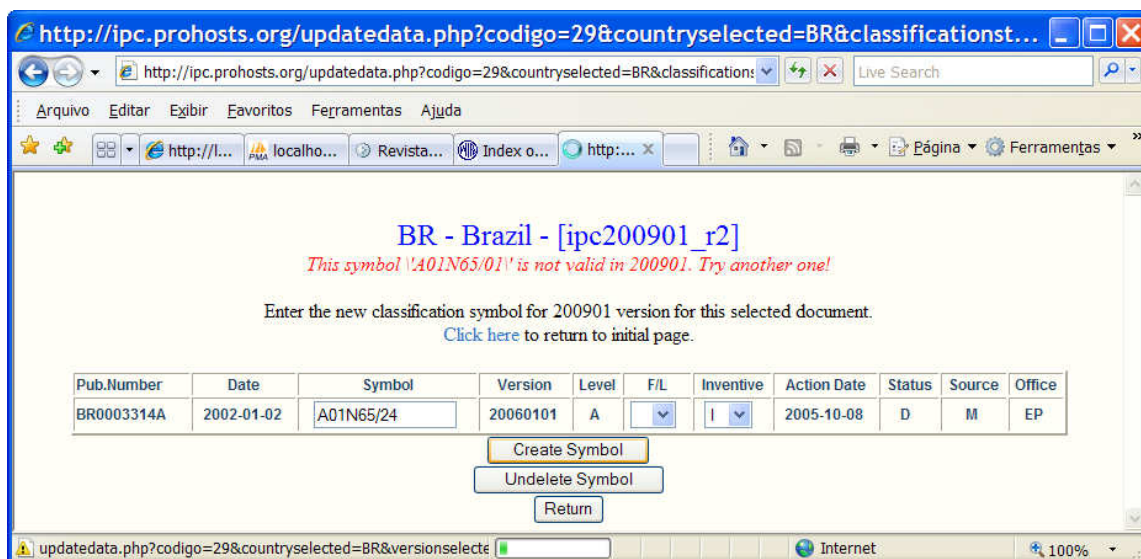


Figure 9 - Inserting a new valid symbol

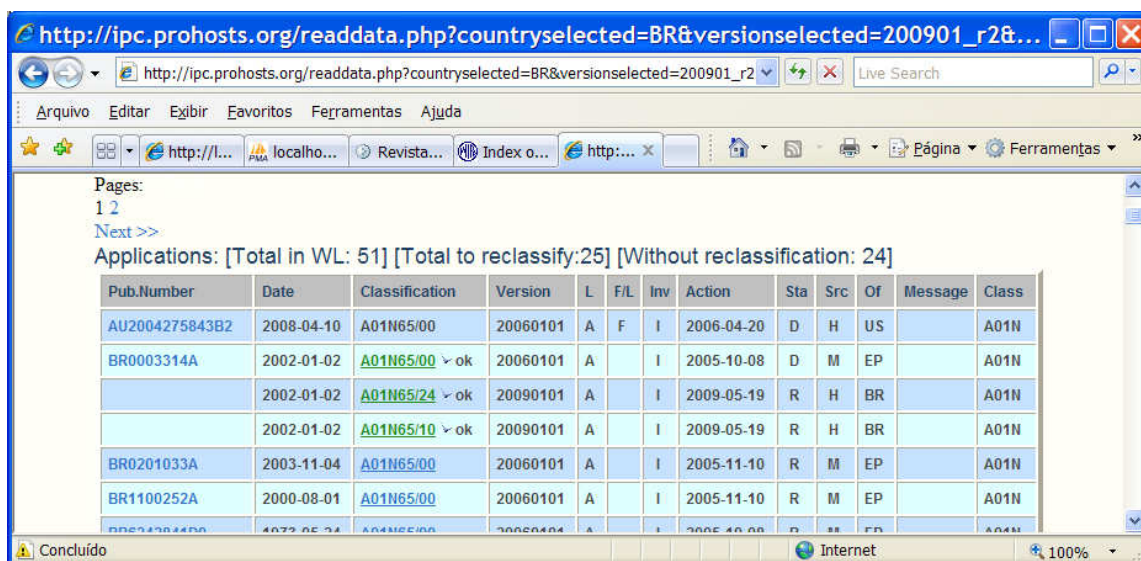


Figure 10 - At this time one deleted symbol and just two new symbols for BR0003314

To delete some symbols just select the symbol that you want to delete (Figure 10), for example A01N65/24 and press "Delete Symbol" button (Figure 11).



Figure 11 - Press "Delete Symbol" button to delete this symbol

Observe that if you select the original symbol A01N65/00 you have the possibility to insert a new symbol, but if you select a symbol that is not original, but was inserted by you, like A01N65/10 the window will not display the "Create Symbol" button but "Update Symbol" button. For example, we inserted A01N65/10 but we did not select it as F attribute. If we select A01N65/10 again, we have the possibility to edit this symbol and press "Update Symbol" button (Figure 12).

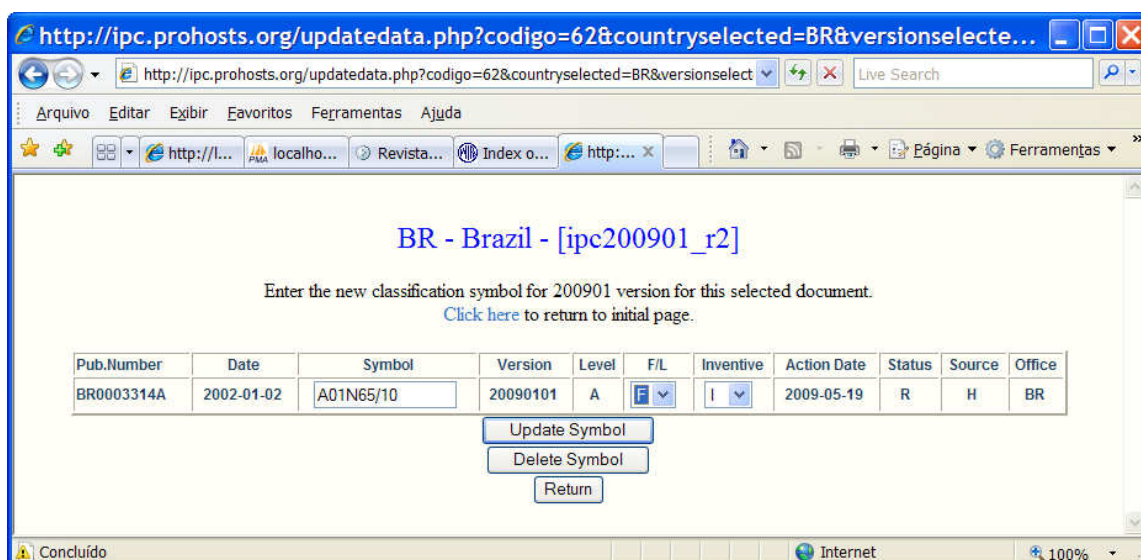


Figure 12 - Updating a symbol as F attribute

The next screen will show the result with a F attribute at the symbol A01N65/10 (Figure 13).

Next >>

Applications: [Total in WL: 51] [Total to reclassify:25] [Without reclassification: 24]

Pub.Number	Date	Classification	Version	L	F/L	Inv	Action	Sta	Src	Of	Message	Class
AU2004275843B2	2008-04-10	A01N65/00	20060101	A	F	I	2006-04-20	D	H	US		A01N
BR0003314A	2002-01-02	A01N65/00 ✓ ok	20060101	A		I	2005-10-08	D	M	EP		A01N
	2002-01-02	A01N65/10 ✓ ok	20090101	A	F	I	2009-05-19	R	H	BR		A01N
BR0201033A	2003-11-04	A01N65/00	20060101	A		I	2005-11-10	R	M	EP		A01N
BR1100252A	2000-08-01	A01N65/00	20060101	A		I	2005-11-10	R	M	EP		A01N
BR6242841D0	1973-05-24	A01N65/00	20060101	A		I	2005-10-08	R	M	EP		A01N
BR6463965D0	1973-09-06	A01N65/00	20060101	A		I	2005-10-08	R	M	EP		A01N
BR7200290D0	1973-09-20	C07G17/00	20060101	A		I	2005-11-10	R	M	EP		A01N

Concluido

Figure 13 The symbol A01N65/10 is presented as F attribute now

If you insert a new symbol (A01N65/32) with F attribute (Figure 14) the system detects a warning condition (Figure 15).

BR - Brazil - [ipc200901_r2]

Enter the new classification symbol for 200901 version for this selected document.
[Click here](#) to return to initial page.

Pub.Number	Date	Symbol	Version	Level	F/L	Inventive	Action Date	Status	Source	Office
BR0003314A	2002-01-02	A01N65/32	20060101	A	F	I	2005-10-08	D	M	EP

Create Symbol

Undelete Symbol

Return

Figure 14 - Inserting a new symbol, also with F attribute

The screenshot shows a web browser window with the URL http://ipc.prohosts.org/readdata.php?countryselected=BR&versionselected=200901_r2&page=0&do.... The browser's address bar and menu bar are visible. The main content area displays a table of patent applications. Above the table, it says "Applications: [Total in WL: 51] [Total to reclassify:25] [Without reclassification: 24]". The table has columns: Pub.Number, Date, Classification, Version, L, F/L, Inv, Action, Sta, Src, Of, Message, and Class. Two rows are highlighted in red, indicating warnings. The first red row is for application BR0003314A, which has two 'F' attributes. The second red row is for application BR0201033A, which also has two 'F' attributes. The message for these rows is "- It must have only one F attribute!".

Pub.Number	Date	Classification	Version	L	F/L	Inv	Action	Sta	Src	Of	Message	Class
AU2004275843B2	2008-04-10	A01N65/00	20060101	A	F	I	2006-04-20	D	H	US		A01N
BR0003314A	2002-01-02	A01N65/00 > ok	20060101	A	F	I	2005-10-08	D	M	EP		A01N
	2002-01-02	A01N65/32 > ok	20090101	A	F	I	2009-05-19	R	H	BR	- It must have only one F attribute!	A01N
	2002-01-02	A01N65/10 > ok	20090101	A	F	I	2009-05-19	R	H	BR	- It must have only one F attribute!	A01N
BR0201033A	2003-11-04	A01N65/00	20060101	A	F	I	2005-11-10	R	M	EP		A01N
BR1100252A	2000-08-01	A01N65/00	20060101	A	F	I	2005-11-10	R	M	EP		A01N
BR6242841D0	1973-05-24	A01N65/00	20060101	A	F	I	2005-10-08	R	M	EP		A01N

Figure 15 – The system presents an alert message about two F attributes

All warnings are showed in main page in red. In this case the same document BR0003314 has two F attributes what is forbidden. The warnings detected are:

- It must have at least one inventive attribute
- It must have only one F attribute per generating office
- F attribute cannot be Non Inventive
- F attribute cannot be assigned to indexing code or A61P / A61Q subclasses.
- An indexing code or A61P / A61Q subclasses cannot be the only symbol.

The system only presents these warnings but you can still create the XML result file.

At every time the user has available at the bottom of table a button allowing the user to create the XML Result file. Every time that you press "Save XML Result File" button at the bottom of table the system will save all data inserted at the table, and create the XML result file. A screen (Figure 16) will be displayed showing the name of file to be sent to WIPO by email, and all instructions to do this (Figure 17).

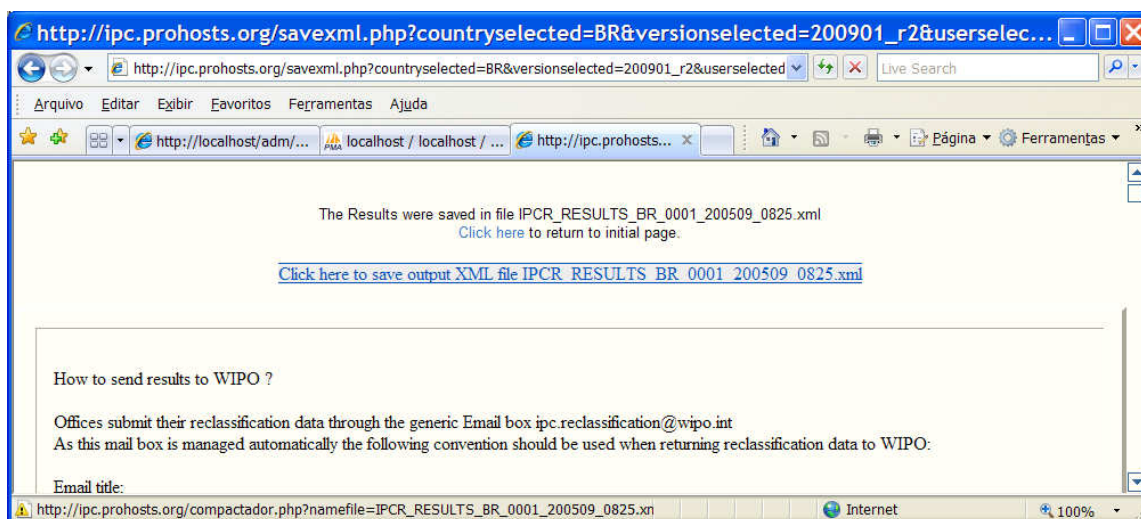


Figure 16 – The generation of XML Result file

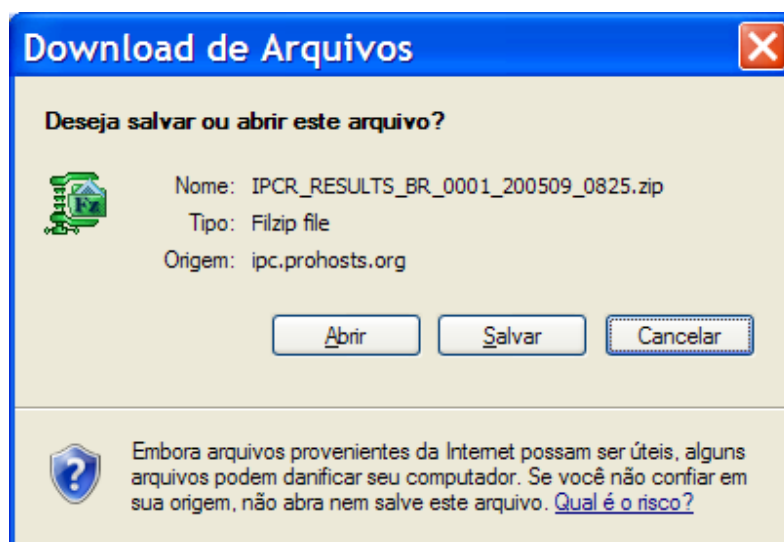


Figure 17 - The user should save the XML Result at a directory of his own computer

2 – Search a document

The documents to be reclassified are displayed 50 documents per page. The pages can be navigated by the hyperlinks Pages: 1, 2 listed above the table (Figure 18). The user can follow each page or simply entry a specific number for searching. For instance to see BR9907057, simply type the number of document and press “Filter” button. This resource can be very useful to access a document particularly when the working lists are very large (Figure 19).



Figure 18 – The header of table shows the pages 1 and 2, and the quantity of docs to be reclassified, in this case 25 docs from a total 51 at working list (the remaining 26 are automatically reclassified by the system, putting a delete attribute at appropriate symbol from family member)

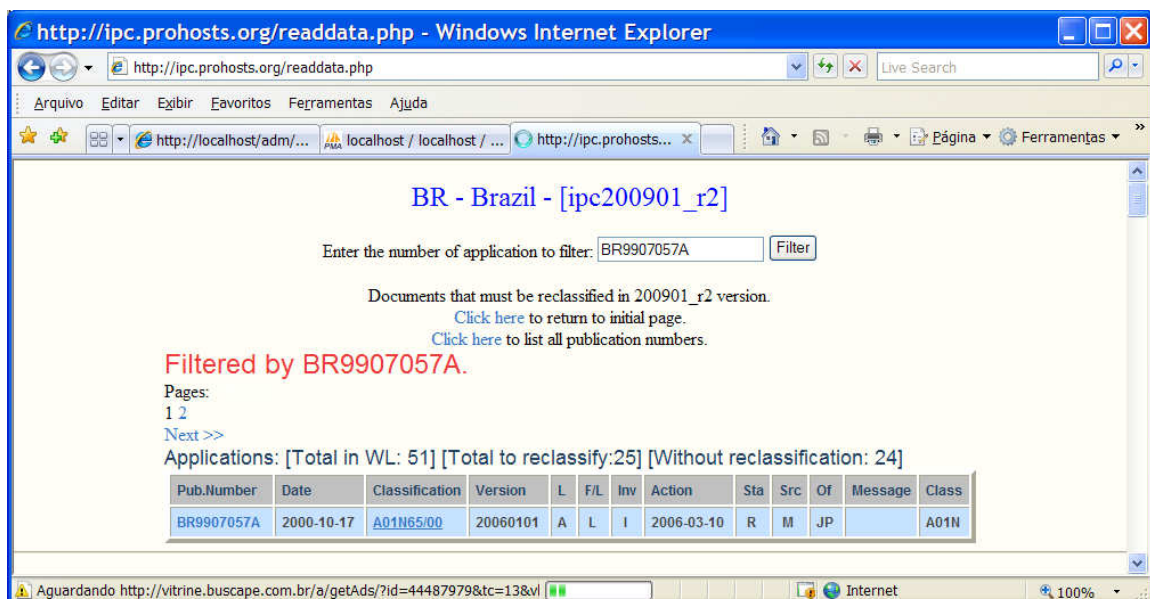


Figure 19 - The result of filtering BR9907057A

3 – Listings all documents

The user can access the documents listed at working list just pressing the hyperlink at document. The system will be directed to espacenet, SIPO (for CN documents) or KIPRIS (for KR documents) where the user can see the whole document in PDF format. In case that user need to recover the document in paper form, it would useful for him to retrieve a list with all patent numbers of documents to be reclassified (Figure 20). To do it, you have to choose “Click here to list all publication numbers”.

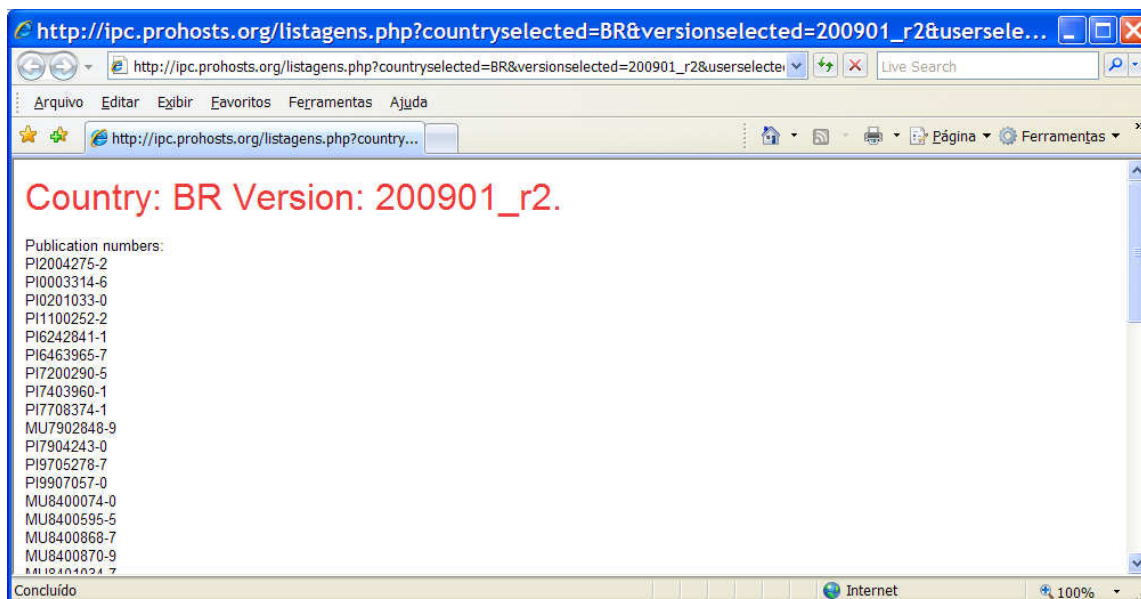


Figure 20 -Listing with all documents to be reclassified

4 – Monitoring reclassification work per country

At each new version of IPC, EPO/WIPO delivered a new set of working lists, one per country, with all information about reclassification data. Sometimes new sets of working lists are delivered, for the same version of IPC. This lists can be generated because some error in previous lists, there are new documents to be reclassified or the country missed to reclassify some documents, that is, its XML result file is not complete. These lists are called “Residual Working Lists”. Sometimes become a little bit confusing to user to handle all these lists. The system minimizes this problem showing to the user the last available list, so he does not need to worry about old ones.

The system has a functionality (Figure 21) that allows the user to monitor how many documents are missing to be reclassified. For each version the system compares the most recent working list with the corresponding Result File that is available at WIPO website. For instance, if the office did not send such result file, the system will show that there are 100% documents to be reclassified.



Figure 21 - The function that allow to monitor the reclassification work

In Figure 22 observe that at IPC2007 BR has 2 docs to be reclassified (Residual Working List 2) and not documents was sent at Result File, probably because no XML Result file was sent at all. So all pie is presented in red, what means that 100% of documents are missing. In 2008/01 there are 13 documents to be reclassified, but the system recognized only 11 documents at result file, so in this case 85% of documents were reclassified, what in shown in green.

Note that this does not mean that all documents presented at result file are correct. Maybe when processing these results, EPO discovers that there is something wrong in reclassification. In this case, probable a new set of working list will be generated by EPO.

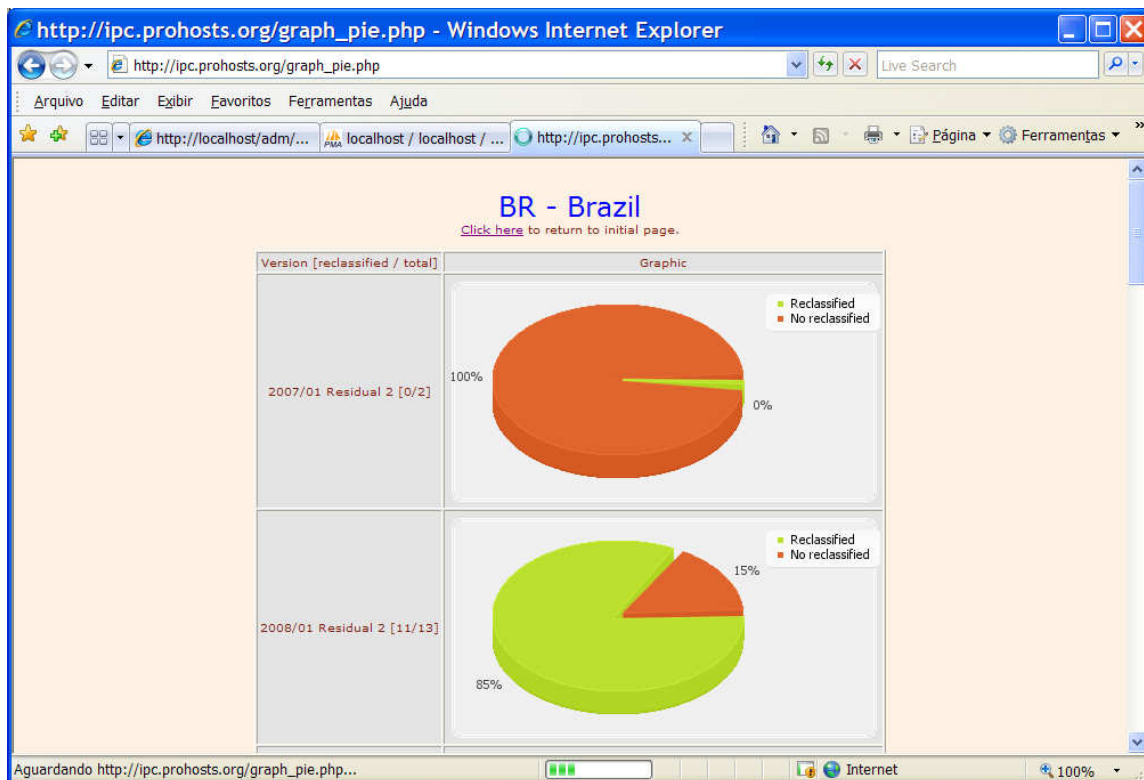


Figure 22 – Monitoring the quantity of reclassification work

5 – Monitoring reclassification work per version

The system also permits to monitor the reclassification work for all countries (Figure 23), at each version. Again, also in this case the system will take into consideration only the last set of working lists. So immediately after the publication of a new set of working lists all countries will be displayed as 100% documents to be reclassified (Figure 24).

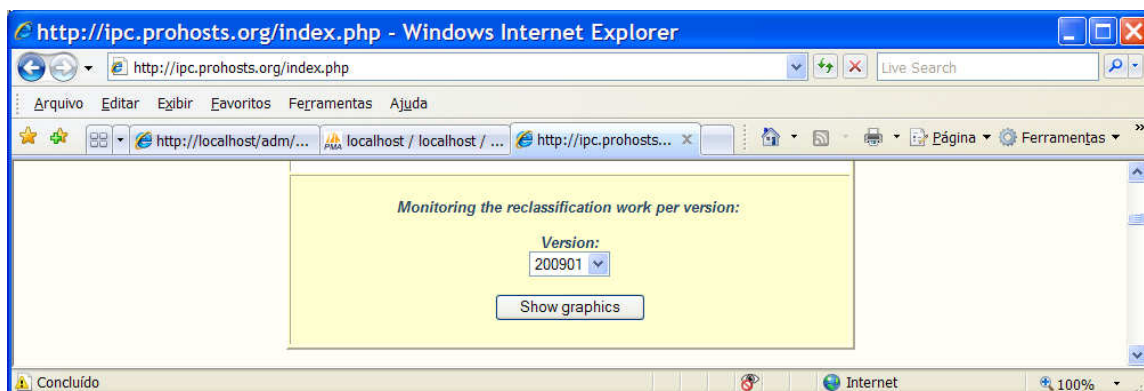


Figure 23- The function that allow to monitor the reclassification work per version

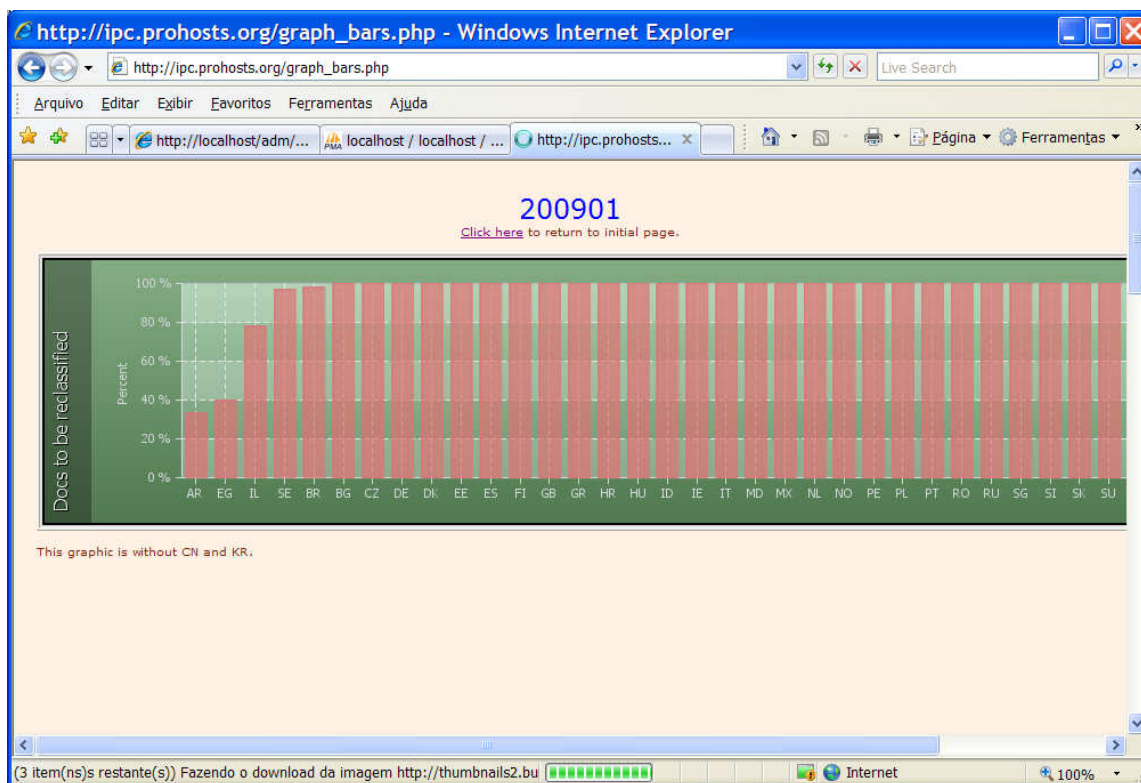


Figure 24 - The reclassification work for all countries

Contact:

Comments and suggestions can be sent to

abrant@inpi.gov.br
danieljr@inpi.gov.br