

PCT-SAFE Client Software

Version 3.51.053.229 – 01 January 2012

Release Notes

This document contains information and known issues with the version 3.51.053.229 of the PCT-SAFE Client software. Please e-mail any questions or comments relating to the PCT-SAFE Client, or to these release notes, to pctsafe.help@wipo.int.

Version 3.51.053.229 is a full installation for the PCT-SAFE Client. This version may also be used to upgrade previous versions of the PCT-SAFE Client. Refer to sections 'Upgrade Instructions', 'Determine current version of installed PCT-SAFE Client software' and 'Access rights for installation and operation' of this document for further details.

Minimum system requirements:

1. Computer processor: 600MHz
2. Available hard disk space: 1Gb
3. RAM: 256 Mb
4. Internet connection (for the purposes of on-line transmission and digital certificate enrollment and retrieval)
5. Adobe Acrobat or Acrobat Reader, from version 7.x
6. CD-ROM drive (for CD installation)
7. Floppy disk drive: 3 1/2 inch disk drive (for PCT-EASY request form data and abstract or, if accepted by the receiving Office, fully electronic applications)
8. CD or DVD writer and software (for fully electronic PCT-SAFE applications filed on physical medium and for saving PCT-EASY request form data and abstract, if accepted by the RO)

The software will run on Microsoft Windows® XP/Vista/Windows® 7.

In order to sign and transmit fully electronic packages on-line, you will need a digital certificate. To obtain a digital certificate from the WIPO Customer Certification Authority, please follow the instructions and the User Guides on our web site:

<http://www.wipo.int/pct-safe/en/certificates.html>.

Installation Instructions (first installation)

To install the software, it is necessary to run the downloaded file `pct-safe-3.51.053-bin.exe`. Once the installation completed, clicking Start> (All Programs>) PCT-SAFE>PCT-SAFE-FM will then start the application.

Upgrade Instructions

To upgrade one of the previous versions of the PCT-SAFE Client, please proceed as follows:

1. Export any form or address book data to a folder outside the C:\PCT-SAFE folder as a backup (guidelines on the export/import functionality can be found at http://www.wipo.int/pct-safe/en/support/user_documentation.htm).
2. Ensure that PCT-SAFE is not running.
3. Run the pct-safe-3.51.053-bin.exe from the local drive, using the same installation destination directory (C:\PCT-SAFE) as the previous installation.
4. The previous installation will be overwritten.
5. During the installation, when prompted, accept the update of the demo and production databases.
6. During the installation, when prompted, 'overwrite all' existing fee schedules.
7. At the end of the installation you may need to restart the computer.

Determine current version of installed PCT-SAFE Client software

To determine which version of PCT-SAFE you are using please select **Tools>Settings>**[click button] **PCT filing** from the PCT SAFE File Manager. (The version of the software that is displayed on the Help>About PCT-SAFE File Manager screen refers to the version of the File Manager only and NOT the PCT-SAFE module.)

The version number can also be viewed in the PCT/RO/101 electronic request form by selecting Help>About PCT-SAFE.

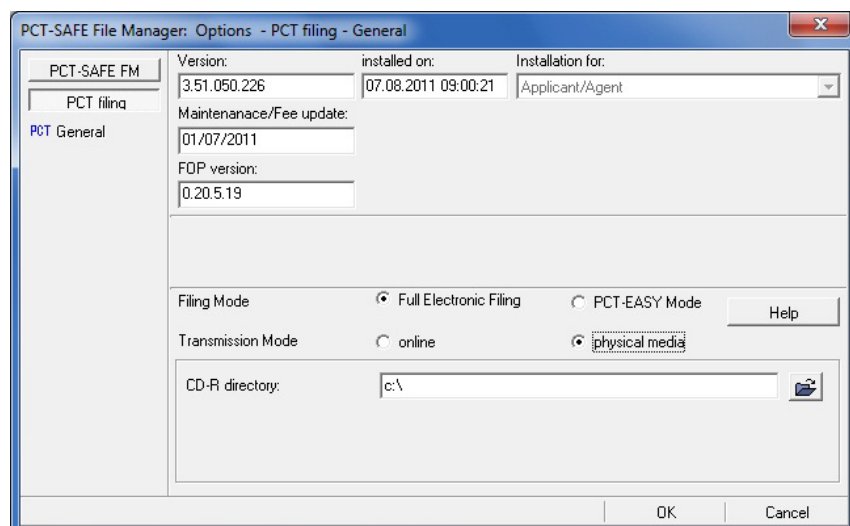
Access rights for installation and operation

For the installation of the PCT-SAFE Client local administrator rights are required. After installation no special access rights are required for using the software.

Known Issues of PCT-SAFE version 3.51.053.229

Headline: Installation default mode of filing.

Detailed description: The installation default mode of filing has been changed from 'PCT-EASY' to 'Fully electronic, online'. This means that filers who select an RO that accepts only PCT-EASY type applications, or an RO that does not accept direct online filing via PCT-SAFE will need to manually modify the default filing mode in the PCT-SAFE File Manager settings.



Headline: Installation file and folder names.

Detailed description: To ensure that the PCT-SAFE software installs correctly users are advised not to modify the name of the installation file. Also, the target directory path (C:\PCT-SAFE) where PCT-SAFE is to be installed MUST NOT contain in its name any special and/or non-Latin alphabet characters.

Headline: Stand-alone installation.

Detailed description: PCT-SAFE is a stand-alone installation. It should not be installed over a network or on a shared drive. The Export/Import functionality should be used for the purposes of sharing data and the creation of data backup.

Headline: Installation of PCT-SAFE client and PCT-SAFE Editor.

Detailed description: If the user intends to use both the PCT-SAFE client software and the PCT-SAFE Editor (for creating application documents in xml format for electronic filing), it is strongly recommended to install the PCT-SAFE client software first, and restart the computer after each software installation. NOTE: The PCT-SAFE Editor software is not fully Windows® Vista or Windows® 7 compatible.

Headline: Password protection.

Detailed description: It is possible to password protect the PCT-SAFE software. Please note, however, that it is not possible for the PCT e-Services Help Desk to recover forgotten passwords.

Headline: Fully electronic filings.

Detailed description: As of the release date it is possible to file fully electronic PCT-SAFE applications with the following receiving Offices: AT (Austria), AU (Australia), CA (Canada), CN (China), DE (Germany), DK (Denmark), EP (European Patent Office), ES (Spain), FI (Finland), GB (United Kingdom), IL (Israel), IS (Iceland), JP (Japan), KR (Republic of Korea), MY (Malaysia), NL (The Netherlands), NO (Norway) (with effect from 02 January 2012), PH (Philippines), PL (Poland), RO (Romania), SE (Sweden) and SK (Slovakia), as well as with the receiving Office of the International Bureau of WIPO (RO/IB). Please contact the receiving Office concerned for further information on its requirements and procedure for filing fully electronic applications.

NOTE: The 'demo' mode of the PCT-SAFE client can be used for training and practice filings. Please do not include any sensitive data in demo filings. 'Production' mode is for real electronic filings.

Headline: PCT-SAFE in languages using non-Latin alphabet fonts (e.g. Chinese, Japanese, Korean, Russian).

Detailed description: For fully electronic applications in non-Latin alphabet languages, the file names of the text and drawings files (e.g. pdf), or of the application body (if filed in xml format) must be in Latin alphabet characters.

Headline: Special information for users wishing to file with the United States Patent and Trademark Office (RO/US).

Detailed description: The RO/US only accepts fully electronic PCT filings via their EFS-Web filing system. In order to benefit from the PCT filing fee reduction for fully electronic applications with the request in character coded format, users should create and sign their validated request form using the special EFS-Web functionality in PCT-EASY mode and then upload the PCT-EASY .zip file to the EFS-Web system with the other application documents. It is not possible to use PCT-SAFE in fully electronic mode to create an application package for filing with the RO/US. A user guide is available at http://www.wipo.int/pct-safe/en/support/user_documentation.htm. "Instructions for the use of PCT-SAFE in combination with EFS-Web (e-filing with RO/US)".

Headline: Obtaining a digital certificate.

Detailed description: In order to sign electronically and transmit on-line, users will need to obtain a digital certificate from a recognized Certification Authority, such as the WIPO Customer Certification Authority. Obtaining a certificate from the WIPO Customer CA is simple, and enrollment takes place on-line. Further instructions on this can be found on our web site at: <http://www.wipo.int/pct-safe/en/certificates.html>. Please read the user guides before requesting a certificate. Please note that a certificate can only be issued for an individual and NOT in the name of a company.

Headline: Filing PCT-SAFE fully electronic applications on physical media.

Detailed description: The medium chosen should be clearly labelled with the following indications: the name of each applicant, title of the invention, file reference, date of creation of the physical medium. For full details please refer to paragraph 2(f), Appendix IV of Annex F to the Administrative Instructions under the PCT (http://www.wipo.int/pct/en/texts/pdf/ai_anf.pdf).

Headline: Fee reductions.

Detailed description: The PCT-SAFE fee reductions are as follows:

- PCT-EASY (request and abstract prepared using the PCT-EASY features of the PCT-SAFE software): CHF 100, or equivalent
- PCT-SAFE fully electronic filing (where the text of the description, claims and abstract is in image format, e.g. pdf, tiff): CHF 200, or equivalent
- PCT-SAFE fully electronic filing (where the text of the description, claims and abstract is in character coded format, xml): CHF 300, or equivalent.

Headline: Printout of the request form during the submission process of PCT-EASY type applications.

Detailed description: The printing of the PCT-EASY request form during the submission process may not occur automatically, in which case the system allows for manual printing from the Acrobat Reader.

Instructions on "Printing in PCT-EASY Mode" can be found at:

http://www.wipo.int/pct-safe/en/support/user_documentation.htm.

Headline: Difficulty previewing forms.

Detailed description: Problems previewing the PCT-SAFE forms in pdf format may arise if there are several Adobe applications installed, in different versions, for example Adobe Standard 8 with Acrobat Reader 9. It is advisable, wherever possible, to avoid multiple/different versions of Adobe applications on the same computer. Only the Acrobat Reader is required for previewing PCT-SAFE forms, and reinstalling Acrobat Reader after installing PCT-SAFE has solved the problem for some users.

Headline: Windows® 7 and Acrobat Reader Version 9 compatibility.

Detailed description: There are known issues with Adobe ActiveX version 9 (which is used with Acrobat Reader version 9) when used in a Windows® 7 environment. Users of Acrobat Reader version 9.0.0 and 9.1.0 may encounter problems when previewing forms generated by the PCT-SAFE client. The installation of Acrobat Reader version 9.2.0 or later should resolve these problems.

Headline: Difficulty attaching pdf files.

Detailed description: Problems attaching pdf files to PCT-SAFE forms may arise if the pdf file properties indicate a PDF version higher than 1.4 (Acrobat 5.x), e.g. PDF version 1.5 (Acrobat 6.x). When converting documents to pdf format it is advisable to check that the pdf compatibility is set to 1.4 (Acrobat 5.x). Further information on the technical requirements for pdf files can be found in Section 3.1.2 of Annex F to the Administrative Instructions Under the PCT at:

http://www.wipo.int/export/sites/www/pct/en/texts/pdf/ai_anf.pdf.

[End of document]